

United States Department of the Interior
National Park Service

National Register of Historic Places Registration Form

1. Name of Property

historic name Williamson Historic District

other names/site number _____

2. Location

street & number Roughly bounded by the Norfolk and Western Railroad tracks, and Pritchard, Poplar, Park, Mulberry and Elm Streets not for publication N/A

city or town Williamson vicinity N/A

state West Virginia code WV county Mingo code 059 zip code 25661

3. State/Federal Agency Certification

As the designated authority under the National Historic Preservation Act of 1986, as amended, I hereby certify that this nomination request for determination of eligibility meets the documentation standards for registering properties in the National Register of Historic Places and meets the procedural and professional requirements set forth in 36 CFR Part 60. In my opinion, the property meets does not meet the National Register Criteria. I recommend that this property be considered significant nationally statewide locally. See continuation sheet for additional comments.)

Signature of certifying official/Title

Date

WV State Historic Preservation Office

State or Federal agency and bureau

3 October 2006

In my opinion, the property meets does not meet the National Register criteria. (See continuation sheet for additional comments.)

Signature of commenting official/Title

Date

State or Federal agency and bureau

4. National Park Service Certification

I hereby certify that this property is:

Signature of the Keeper

Date of Action

entered in the National Register
See continuation sheet.

determined eligible for the National Register
See continuation sheet.

determined not eligible for the National Register

removed from the National Register

other (explain): _____

5. Classification

Ownership of Property
(Check as many boxes as apply)

Category of Property
(Check only one box)

Number of Resources within Property
(Do not include previously-listed resources in the count)

- private
- public-local
- public-State
- public-Federal

- building(s)
- district
- site
- structure
- object

Contributing	Noncontributing	
286	56	buildings
1		sites
2		structures
		objects
288	56	Total

Name of related multiple property listing
(enter "N/A" if property is not part of a multiple property listing)
N/A

Number of contributing resources previously listed in the National Register
two

6. Function or Use

Historic Functions

- DOMESTIC/single dwelling
- DOMESTIC/secondary structure
- COMMERCE/TRADE/specialty store
- RELIGION/religious facility
- EDUCATION/school
- TRANSPORTATION/rail related
- HEALTH CARE/hospital

Current Functions

- DOMESTIC/single dwelling
- DOMESTIC/secondary structure
- COMMERCE/TRADE/specialty store
- RELIGION/religious facility
- EDUCATION/school
- DOMESTIC/multiple dwelling
- GOVERNMENT/city hall

7. Description

Architectural Classification

- NO STYLE
- LATE VICTORIAN/Queen Anne
- LATE 19th & EARLY 20th-CENTURY AMERICAN MOVEMENTS/American Foursquare
- LATE 19th & EARLY 20th-CENTURY AMERICAN MOVEMENTS/Bungalow
- LATE 19TH & 20TH CENTURY REVIVALS/Neo-Classical
- LATE 19TH & 20TH CENTURY REVIVALS/Late Gothic Revival
- LATE 19TH & 20TH CENTURY REVIVALS/Colonial Revival

Materials

- foundation STONE/limestone; BRICK
- walls WOOD; BRICK; STUCCO; SYNTHETICS/vinyl
- roof METAL; ASPHALT; STONE/slate
- other STONE; BRICK; WOOD

Narrative Description

Refer to Continuation Sheets

8. Statement of Significance

Applicable National Register Criteria

(Mark "x" in one or more boxes for the criteria qualifying the property for National Register listing)

- A Property is associated with events that have made a significant contribution to the broad patterns of our history.
- B Property is associated with the lives of persons significant in our past.
- C Property embodies the distinctive characteristics of a type, period, or method of construction or represents the work of a master, or possesses high artistic values, or represents a significant and distinguishable entity whose components lack individual distinction.
- D Property has yielded, or is likely to yield, information important in prehistory or history.

Areas of Significance

(Enter categories from instructions)

ARCHITECTURE

Period of Significance

1892 -1956

Significant Dates

1892

Significant Person

N/A

Criteria Considerations

Property is:

- A owned by a religious institution or used for religious purposes.
- B removed from its original location.
- C a birthplace or a grave.
- D a cemetery.
- E a reconstructed building, object, or structure.
- F a commemorative property.
- G less than 50 years of age or achieved significance within the past 50 years

Cultural Affiliation

N/A

Architect/Builder

Pietro, Thoney

Narrative Statement of Significance

(Refer to continuation sheets.)

9. Major Bibliographical References

Bibliography

(See continuation sheets.)

Previous documentation on file (NPS):

- preliminary determination of individual listing (36 CFR 67) has been requested.
- previously listed in the National Register
- previously determined eligible by the National Register
- designated a National Historic Landmark
- recorded by Historic American Buildings Survey # _____
- recorded by Historic American Engineering Record # _____

Primary location of additional data:

- State Historic Preservation Office
- Other state agency
- Federal agency
- Local government
- University
- Other

Name of repository: _____

Williamson Historic District
Name of Property

Mingo County, WV
County and State

10. Geographical Data

Acreage of Property 46 acres

U. S. G. S. Quad map: Williamson, WV-KY

UTM References

	Zone	Easting	Northing		Zone	Easting	Northing
1	17	388020	4170580	3	17	387100	4170620
2	17	387540	4169880				

Verbal Boundary Description
(See Continuation Sheet)

Boundary Justification
(See Continuation Sheet.)

11. Form Prepared By

name/title David L. Taylor, Principal
organization Taylor & Taylor Associates, Inc. date July, 2006
street & number 9 Walnut Street telephone 814-849-4900
city or town Brookville state PA zip code 15825

Property Owner

name Multiple owners

**United States Department of the Interior
National Park Service**

**National Register of Historic Places
Continuation Sheet**

**Williamson Historic District
Mingo County, WV**

Section Number 7 Page 1

7. DESCRIPTION

The Williamson Historic District (Photos 1-22; Figs. 1-4) consists of a mixed-use concentration of 46 acres located on the north side of Williamson, the county seat of Mingo County, West Virginia. Mingo County is located in rural southwestern West Virginia; Pike County, Kentucky, borders Mingo County to the west, across the Tug Fork of the Big Sandy River. The district contains a total of 346 resources, most of which are residential in character (Photos 1,3, 6-8, 10, 11, 13-17, 19, and 20). A small concentration of commercial properties are found on Fourth Avenue and Logan Street and several churches (Photos 9, 21) are scattered throughout the district. A 1927 former hospital (Resource No.14; Photo No. 21) converted to professional office use is on Mulberry Street and a non-contributing school (Resource No. 40) faces Sixth Avenue. On Fourth Avenue is an early twentieth-century former railroad depot (Resource No. 321; Photo No. 1) which has been converted for use as the Williamson City Hall. A cemetery (Resource No.103) is located at the north end of Maple Walk; it is a contributing site. The historic brick-paved streets (Resource No. 342) are treated collectively as a contributing site. Various residential dependencies--primarily garages--are found throughout the district. Larger dependencies are included in the resource count which appears in Section 5, while smaller garages and sheds are also treated as uncounted landscape features. Several areas of paved surface parking are located in the commercial portion of the district; these are treated as uncounted landscape features. Two resources within the district was listed previously in the National Register: the Elven C. Smith House (Resource No. 232) at 210 Little Oak Street (NR 2002) is a 1938 Neo-Classical Revival-style home built for a leading Williamson businessman. The Smith House and its attendant historic stone retaining wall system appear on the map submitted with the nomination but are not counted in the resource count. Of the 344 unlisted resources in the district, 286 (83%) contribute to the character of the district and 56 (17%) are non-contributing. Most non-contributing properties post-date the period of significance; some of these are residential dependencies. Only in a few cases have properties been insensitively altered to the extent that they no longer retain sufficient integrity to be considered contributing. The district as a whole retains integrity and is a physically-cohesive concentration of individual buildings of diverse historic and current function, located within a geographical area whose boundaries can be readily defined by the character of the properties found within.

The Williamson Historic District is primarily residential in character and contains numerous examples of the architectural styles popular during the 64-year period of significance, as well as a

United States Department of the Interior
National Park Service

National Register of Historic Places
Continuation Sheet

Williamson Historic District
Mingo County, WV

Section Number 7 Page 2

variety of vernacular¹ buildings erected without reference to any particular formal style but which nonetheless reflect the historic building traditions prevalent in this part of West Virginia. In addition to the houses in the district, the nominated area also includes a variety of domestic dependencies (primarily single-story automobile garages), several historic churches (Photo Nos. 9, 21), a former hospital and nurses' home (Resource Nos. 13, 14; Photo Nos. 22, 23), two Masonic lodge buildings (Resource Nos. 62 and 72; Photo Nos. 2, 5), a former train station (Resource No. 321; Photo 1), and a small number of commercial buildings located along Alderson Street (Photo No. 4) and Fourth Avenue, the latter of which forms the southwestern periphery of the district.

Most of the Williamson Historic District lies north of Fourth Avenue (U. S. Rt. 52). The topography of the district rises steeply north of Fourth Street to its northern periphery along Poplar Street. The former Williamson Hospital (Resource No. 14; Photo No. 22) is at the northeast corner of the district and is sited on one of the highest points in the city. Moving from south to north are the following streets: Fourth through Seventh Avenues, followed by Oak and Poplar Street. Moving from the west to east, the aforementioned streets are intersected by Pritchard, Dickinson, Harvey, and Logan Streets. Wallace Street extends northward on a diagonal beside the high school, linking Sixth Avenue and Oak Street. Pine Street runs southwest-to-northeast near the east end of the district and upon crossing Fifth Avenue becomes Alderson Street. Elm Street forms a part of the eastern edge of the district, extending northward from Fourth Avenue. One block of Joseph Avenue extends between Alderson and Elm Streets, and Mulberry Street forms a part of the northern periphery of the district near the former hospital. Among the district's most distinctive areas is found along Maple Walk (Photo Nos. 19, 20) at the top of the hill along the southeastern edge of the district. A series of substantial homes faces the city below and is accessed from the rear along Elm Street. In front of these homes is a walkway leading southward from Joseph Street.

The streets in the Williamson Historic District are paved, some retaining historic brick finishes likely laid by master mason Thoney Pietro, who is known to have worked in Williamson early in the twentieth century and whose work is discussed in more detail in Section 8. Concrete and stone curbs are found along the streets. Unnamed alleys run between Fourth and Fifth Avenues and Fifth and Sixth Avenues. Traffic signals are found along Fourth Avenue, which is a busy commercial thoroughfare. Street lighting employs "cobra head" light fixtures mounted on utility poles and powered

¹The term, "vernacular," when used in this context, conforms to the definition which appears in Ward Bucher's **Dictionary of Building Preservation**: "a building built without being designed by an architect or someone with similar formal training; often based on traditional or regional forms."

United States Department of the Interior
National Park Service

National Register of Historic Places
Continuation Sheet

Williamson Historic District
Mingo County, WV

Section Number 7 Page 3

by overhead wiring.

Throughout the district area a series of substantial stone and concrete retaining walls, likely dating from the district's earlier years. Ranging in height from c.4 feet to c.6 feet and c. 1 foot in depth, these structures hold back the front and side yards of properties erected along the district's steep hillsides. They are in varying condition, including some areas which exhibit evidence of slippage over time. Within the context of the district, the walls are treated as a single contributing structure (Resource No. 343).

Development throughout the district is dense, with the vast majority of the buildings occupying a single building lot. Most of the district's residential buildings are two stories in height and generally rest on foundations of sandstone. The 3½-story former Williamson Memorial Hospital on Mulberry Street (Resource No. 14; Photo No. 22) is the tallest building in the district, followed by the three-story Masonic Lodge (Resource No. 62; Photo No 2) on Logan Street. Roof forms include the gabled roof, both laterally-oriented and gable-end-oriented, as well as the hipped and pyramidal forms. The district's few Dutch Colonial Revival-style houses exhibit the characteristic gambrel roof which defines the style. The former nurses' home (Resource No.13) adjacent to the former hospital (Resource No.14; Photo No. 23) has a Mansard roof. Residential roofs are finished in asphalt shingle, slate, and metal. The district's few commercial and secular institutional buildings have flat roofs. The finishes of flat roofs are not easily observable but were likely originally clad in welded sheet metal, which was replaced over the years by rolled roofing and more recently, by rubber membranes. Chimneys of brick and concrete block have been retained on many properties, although in some instances chimneys have been removed in the course of retrofitting heating systems. Residential buildings generally retain front porches and verandas of varying sizes and detailing. Brick is the favored building material in the district, followed by wood. Flat-topped fenestration appears on the majority of the buildings in the district; churches exhibit arched windows, often glazed with religious art glass.

Landscaping within the district varies considerably. Most houses are set back from their respective roadways, with front yards and side and rear yards of varying dimension. Historic post card views (Fig. 4) indicate that trees were planted early on along the sidewalks in the district. Mature shade trees are retained in small numbers throughout the district. The majority of the homes in the district rely upon on-street parking; some properties have garages at the side or rear of their respective lot.

The Williamson Historic District developed after the heyday of Victorian architecture. Formal

United States Department of the Interior

National Park Service

National Register of Historic Places Continuation Sheet

**Williamson Historic District
Mingo County, WV**

Section Number 7 Page 4

architectural styles represented within the district include the Queen Anne, Neo-Classical and Romanesque Revivals, American Foursquare, Late Gothic Revival, Colonial Revival (including Dutch Colonial Revival), Cape Cod, and Bungalow.

The Queen Anne style was on the wane by the time this neighborhood developed. Restrained examples of Queen Anne-style detailing, including multi-light windows, occur at the Lewis Apartments, 109 Joseph Street (Resource No. 88) and the house at 34 Fifth Avenue (Resource No. 156). The purest Queen Anne-style residence in the district is the Montezuma Z. White brick cottage with a round tower located at 306 Oak Street (Resource No. 234).

The rise of the Neo-Classical Revival style marked a resurgence of interest in the design tenets of Classical Greece and Rome. Although practiced in its purest form only sporadically in the Williamson Historic District, examples include the previously-listed Elven Smith House at 210 Little Oak Street (Resource No. 232), a brick house on Maple Walk with a full portico (Resource No. 105), the Masonic Lodge Building on Logan Street (Resource No. 61), and the Presbyterian Academy Building at 138 Oak Street (Resource No. 236).

The Colonial Revival style was born in the fervor of patriotism generated by the American Centennial of 1876 and remained in vogue throughout much of the balance of the period of significance of the Williamson Historic District. Some Colonial Revival-style buildings are reasonably faithful representations of eighteenth-century design, while others only include a hint of Colonial detailing, such as a symmetrical facade, a centered entry with fanlight and/or transom, and, in some cases, a Palladian window or dormers. Dutch Colonial Revival homes are in the district as well. Colonial Revival style design is represented in the U-shaped apartment building on Alderson Street (Resource No. 50) and in the properties at 708 College Hill, 519 Maple Walk, and 32 and 24 Oak Street (Resource Nos. 93, 130,250, and 253, respectively)

The Dutch Colonial Revival style, with its characteristic gambrel roof form, appears in the houses at 108 Alderson Street, 542 Maple Walk, 38 West Fifth Avenue, and 702 Dickinson Street (Resource Nos. 33, 113, 158, and 312, respectively).

A particularly prolific style within the historic district is the ubiquitous American Foursquare, which appears more often than any other design mode. Often interpreted as more of a house type than an architectural style, Foursquares appear on nearly every street in America dating from the decades between 1910 and 1930. Representing purely twentieth-century design, such houses are typically

United States Department of the Interior
National Park Service

National Register of Historic Places
Continuation Sheet

Williamson Historic District
Mingo County, WV

Section Number 7 Page 5

square in form, generally with a hipped or pyramidal roof penetrated by dormers. They appear equally in wood and masonry, exhibit facades which are two or three bays in width, and have a porch, typically with a hipped roof. This style is represented in the Williamson Historic District by the properties at 853, 849, 847, 837, 833, 716, 710, and 708 Alderson Street (Resource No. 18, 20, 21, 26, 28, 44, 47, and 48, respectively) and 511 Logan Street, 426 Pike Street, 420 Joseph Street, and 570, 548-550, and 333 Maple Walk (Resource No. 55, 68, 84, 104, 108, and 118, respectively).

The Gothic and Romanesque Revival styles in the district occur in religious design and borrow forms, massing, and fenestration patterns from the Middle Ages. The former style employed lancet-arched fenestration while the latter used the semi-circular-arched window form and door openings. Gothic influence appears in the First Baptist Church (Resource No. 164) and the Church of Christ (Resource No. 188). The Presbyterian Church (Resource No. 200; Photo No. 9) features a Romanesque Revival-style arcaded loggia on its facade.

Twentieth-century domestic design in the district is also represented by Bungalows, born of the American interpretation of the Arts-and-Crafts movement early in the twentieth century (Photo Nos. 14, 17). Bungalows are typically 1½ stories in height and incorporate a laterally-oriented gable roof which projects beyond the plane of the house, shields a recessed front porch, and is penetrated by one or more dormers. Bungalows in the district include the houses at 510 Logan Street, 128 and 16 Fifth Avenue, 119, 22, and 32 Sixth Avenue, and 701 Academy Street (Resource Nos. 71, 146, 208, 220, 225, and 240, respectively).

The Cape Cod style, popular from the 1930s through the end of the period of significance, is typified by houses of 1½ stories in height with a symmetrical facade and dormers. This style appears once in the district, in a house on Pritchard Street (Resource No. 273).

The mid-twentieth-century Ranch-style house appeared in the Williamson Historic District at the end of the period of significance. One story in height and elongated in form, Ranch-style houses dating from within the period of significance of the district include 843 and 833 Mulberry Street, 430 Pike Street, and 563 and 555 Maple (Resource Nos. 2, 6, 70, 98, and 102, respectively).

The following properties lie within the Williamson Historic District. The numbering is keyed to the map prepared in conjunction with the nomination documents.

1. **side, 843 Mulberry Street**, residential dependency

United States Department of the Interior
National Park Service

National Register of Historic Places
Continuation Sheet

Williamson Historic District
Mingo County, WV

Section Number 7 Page 6

Description: 1-story modern garage of wood clad in T-111.

Date: ca. 1970

1 non-contributing building

2. **843 Mulberry Street**, residential

Description: 1½-story ranch-style house faced in stone with an L-shaped facade and porch in the angle of the ell; original steel frame windows intact.

Date: ca. 1950.

1 contributing building

3. **841 Mulberry Street**, residential

Description: 1-story stone-faced cottage with intersecting gable roof and original steel frame windows; L-shaped facade with porch in the angle of the ell.

Date: ca. 1950.

1 contributing building

4. **831 Mulberry Street**, residential

Description: 1½-story stone-faced cottage with laterally-oriented gable roof and paired gabled dormers. L-shaped facade with recessed porch. Fenestration flat-topped with six-over-six replacement sash.

Date: ca. 1950.

1 contributing building

5. **833 Mulberry Street**, residential

Description: 1-story modern building small in scale with gable roof and gable end orientation to the street, built outside the period of significance of the district

Date: ca. 1990

1 non-contributing building

6. **833 Mulberry Street**, residential

Description: 1-story ranch-style house with laterally-oriented gable roof and stone and brick facing. Original steel frame windows

Date: ca. 1950.

1 contributing building

7. **829 Mulberry Street**, residential

Description: 1-story laterally-oriented gable-roofed cottage with projecting pedimented portico centered on the facade and supported by wrought iron. Fenestration flat-topped, without notable ornament.

Date: ca. 1950.

1 contributing building

8. **825 Mulberry Street**, residential

Description: 1-story vernacular wood frame residence with laterally-oriented gable roof, built outside the period of significance.

United States Department of the Interior
National Park Service

National Register of Historic Places
Continuation Sheet

Williamson Historic District
Mingo County, WV

Section Number 7 Page 7

Date: ca. 1960

1 non-contributing building

9. **823 Mulberry Street**, residential

Description: 1-story wood cottage with laterally-oriented gable roof and stone facing with gable-end-oriented front porch.

Date: ca. 1950.

1 contributing building

10. **821 Mulberry Street**, residential

Description: 1-story vernacular residence with laterally-oriented gable roof and L-shaped facade. Exterior clad in brick and perma-stone which appears to date from the original construction.

Date: ca. 1950.

1 contributing building

11. **819 Mulberry Street**, residential

Description: 1-story wood and stone-faced residence, with a laterally-oriented gable roof of corrugated metal built outside the period of significance.

Date: ca. 1960

1 non-contributing building

12. **809 Mulberry Street**, residential

Description: 1½-story cottage with jerkinhead gable roof and gable end orientation to the street. Exterior finished in stucco with stone quoins. Three-bay facade with main entrance centered thereon. Fenestration flat-topped, one-over-one.

Date: ca. 1920.

1 contributing building

13. **Mulberry Street (former Memorial Hospital Nursing School)**, vacant

Description: 3-story stylized French Second Empire-style educational building finished in yellow brick with a five-bay facade and a centered entry incorporating a Neo-Classical Revival-style frontispiece of modest detailing. Windows flat-topped, with original steel frame sash. Slate Mansard penetrated by segmental arched dormers on the facade and on the side elevations. This was a nursing school associated with Williamson Memorial Hospital (Resource No. 14, below)

Date: ca. 1920

1 contributing building

14. **W side, Mulberry Street (former Williamson Memorial Hospital)**, commercial

Description: College Hill Professional Building, formerly Williamson Memorial Hospital, this is a 4-story institutional building of brick construction, irregular in plan with flat-topped windows with replacement sash generally in keeping with the character of the building. Multiple roof system.

Date: 1927

1 contributing building

United States Department of the Interior
National Park Service

National Register of Historic Places
Continuation Sheet

Williamson Historic District
Mingo County, WV

Section Number 7 Page 8

15. **E side, Mulberry Street**, public works
Description: Right beside that is a 1-, 2-, and 3-story building of red brick construction, portions of which are painted white; irregular roof system and a variety of fenestration patterns. This was the water plant for the City of Williamson.
Date: ca. 1920
1 contributing building
16. **857 (?) Alderson Street**, residential
Description: First is a 1½-story wood cottage, vernacular in character, with a hipped roof and hipped dormer; porch partially enclosed; flat-topped windows; no notable ornament
Date: ca. 1920.
1 contributing building
17. **855 (?) Alderson Street**, residential
Description: 1-story wood frame cottage of vernacular character, clad in shiplap siding with gable roof and gable-end-orientation to the street. Fenestration flat-topped without notable ornament. A garage is in the basement on the facade.
Date: ca. 1920
1 contributing building
18. **853 Alderson Street**, residential
Description: 2-story American Foursquare of wood construction clad in asphalt shingles with two-bay facade and 1-story hip-roofed porch with paneled bulkhead railing.
Date: ca. 1920
1 contributing building
19. **851 Alderson Street**, residential
Description: 1-story cottage of wood construction with porch removed and resulting loss of integrity
Date: ca. 1920
1 non-contributing building
20. **849 Alderson Street**, residential
Description: 2-story American Foursquare of wood construction, with a 2-bay facade, hipped-roof, and hipped-roof porch.
Date: ca. 1920
1 contributing building
21. **847 Alderson Street**, residential
Description: 2-story American Foursquare of wood construction hipped roof hipped dormer two bay facade; hipped roof porch supported by turned posts.
Date: ca. 1920.
1 contributing building

United States Department of the Interior
National Park Service

National Register of Historic Places
Continuation Sheet

Williamson Historic District
Mingo County, WV

Section Number 7 Page 9

22. **845 Alderson Street**, residential
Description: 1-story hipped-roofed cottage of wood construction with recessed front porch built on a foundation of concrete block.
Date: ca. 1950.
1 contributing building
23. **843 Alderson Street**, residential
Description: 1-story gable end oriented cottage of wood construction built on a raised foundation of concrete block; fenestration flat-topped garage built into the basement
Date: ca. 1950.
1 contributing building
24. **841 Alderson Street**, residential
Description: 1-story modern building of wood construction built outside the period of significance.
1 non-contributing building
25. **839 Alderson Street**, residential
Description: 2-story American Foursquare hipped-roof hipped dormers wood construction front porch enclosed in artificial stone with loss of integrity.
Date: c. 1920
1 non-contributing building
26. **837 Alderson Street**, residential
Description: 2-story American Foursquare ship-lap siding two bay facade hipped roof hipped-roof porch with replacement supports.
Date: ca. 1920
1 contributing building
27. **835 Alderson Street**, residential
Description: 2-story American Foursquare clad in plywood with loss of integrity. Non-contributing building
Date: c. 1920
1 non-contributing building
28. **833 Alderson Street**, residential
Description: 2-story American Foursquare hipped-roof hipped-roof dormer two bay facade windows flat-topped with some original sash. 1-story hipped roof porch extends across the facade.
Date: ca. 1920.
1 contributing building
29. **824 Alderson Street**, institutional
Description: 2-story brick institutional building of modern construction built outside the period of significance.

United States Department of the Interior
National Park Service

National Register of Historic Places
Continuation Sheet

Williamson Historic District
Mingo County, WV

Section Number 7 Page 10

- c. 1980
1 non-contributing building
30. **816 (?) Alderson Street**, residential
Description: 2-story garage apartment built on a foundation of concrete block with an upper story of wood, gable-end orientation to the street. Two car garage on the first floor.
Date: ca. 1920
1 contributing building
31. **814 Alderson Street**, residential
Description: 1-story modern building, residential in character with gable roof and gable end orientation to the street; built outside the period of significance of the district.
Date: ca 1980.
1 non-contributing building.
32. **East side, Alderson Street (Mingo High School Complex)**, educational
Description: 1-story modern building of brick construction built outside the period of significance of the district.
Date: ca 1980.
1 non-contributing building.
33. **808 Alderson Street**, residential
Description: 2-story Dutch Colonial Revival residence of wood construction with gambrel roof and gable end orientation to the street. Asphalt shingle roof 1-story porch supported by Doric columns fenestration; fenestration flat-topped.
Date: ca. 1920.
1 contributing building
34. **806 Alderson Street**, residential
Description: 2-story vernacular residence of wood construction with a recessed porch under a portion of the second floor on the facade. Fenestration flat-topped including some multi-light sash. Exterior clad in asphalt shingles.
Date: ca. 1900
1 contributing building
35. **802 Alderson Street**, residential
Description: 2-story distinctive L-shaped brick cottage with laterally-oriented gable roof and projecting L-shaped section. Pediments of gables are trimmed in imbricated shingling windows flat-topped with rock faced sills and lintels. 1-story porch in the angle of the L supported by turned posts.
Date: c. 1920
1 contributing building
36. **730 Alderson Street**, residential
Description: Interconnected garage and a house of wood construction built outside the period

United States Department of the Interior
National Park Service

National Register of Historic Places
Continuation Sheet

Williamson Historic District
Mingo County, WV

Section Number 7 Page 11

of significance.

Date: c. 1980

1 non-contributing building

37. **728 Alderson Street**, residential
Description: 1-story modern wood frame building, built outside the period of significance.
Date: c. 1980
1 non-contributing building
38. **726 Alderson Street**, residential
Description: 1-story hipped roof cottage with porch enclosed with loss of integrity.
Date: ca. 1930
1 non-contributing building
39. **724 Alderson Street**, residential
Description: 1½-story cottage with hipped roof, wood construction hipped-roofed, hipped-dormer 1-story porch on the facade. Concrete block foundation.
Date: ca. 1920
1 contributing building
40. **W side, Alderson Street and Sixth Avenue (High School)**, institutional
Description: 2-story modern educational building, built outside the period of significance.
Date: c. 1970
1 non-contributing building
41. **722 Alderson Street**, residential
Description: 2-story vernacular residence, Arts and Crafts -style in general form, with gable roof and early enclosed front porch.
Date: ca. 1920
1 contributing building
42. **720 Alderson Street**, residential
Description: 2-story residence of yellow brick construction with flat roof and paired pediments at the parapet. Three-bay facade with main entrance offset, shielded by a pedimented portico. Fenestration one-over-one without notable ornament.
Date: ca. 1920
1 contributing building
43. **718 Alderson Street**, residential
Description: 2-story American Foursquare with multiple alterations, loss of integrity.
Date: ca. 1920
1 non-contributing building
44. **716 Alderson Street**, residential
Description: 2-story American Foursquare of wood construction with original exterior intact

United States Department of the Interior
National Park Service

National Register of Historic Places
Continuation Sheet

Williamson Historic District
Mingo County, WV

Section Number 7 Page 12

including shiplap siding 1-story porch supported by battered wood posts and trimmed with a paneled bulkhead balustrade. Two bay facade hipped roof hipped dormer.

Date: ca. 1920

1 contributing building

45. **714 Alderson Street**, residential

Description: 1-story cottage of wood construction, asphalt shingled hipped-roof. Partially recessed front porch.

Date: ca. 1950.

1 contributing building

46. **712 Alderson Street**, residential

Description: 1½-story cottage of wood construction hipped-roof hipped-dormer 1-story porch extending across the facade.

Date : ca. 1920

1 contributing building

47. **710 Alderson Street**, residential

Description: 2-story American Foursquare asbestos shingles hipped-roof hipped-dormer two bay facade 1-story front porch with brick posts.

Date: ca. 1920

1 contributing building

48. **708 Alderson Street**, residential

Description: American Foursquare hipped-roof no dormers two bay facade partially enclosed front porch.

Date: ca. 1920

1 contributing building

49. **700 Alderson Street**, residential

Description: 1-story residential building of wood construction clad in T-111 siding with loss of integrity.

Date: ca. 1910

1 non-contributing building

50. **W side, Alderson Street at Joseph Street**, residential [vacant]

Description: distinctive three-story multi-unit apartment building, Colonial Revival in style, with a flattened U-shaped facade corresponding to the angle of the site. Balconies opening into each unit, some windows boarded shut. Built of brick with concrete foundations.

Date: ca. 1920

1 contributing building

51. **70 W. Fourth Avenue at Logan Street**, commercial

Description: modern hexagonal brick Neo-Colonial Revival bank building built outside the period of significance; surrounded by parking lot

United States Department of the Interior
National Park Service

National Register of Historic Places
Continuation Sheet

Williamson Historic District
Mingo County, WV

Section Number 7 Page 13

Date: ca.1990.

1 non-contributing building

51a. **W side, Logan Street, N of Fourth Avenue**, commercial

Description: 1-story modern wood building clad in T-111 siding

Date: ca.1990.

1 non-contributing building

52. **W side Logan Street, at Fifth Avenue**, residential

Description: Victorian vernacular residence of wood construction with laterally-oriented gable roof and L-shaped facade. Recessed front porch partially enclosed with operable sash at an early date. Chamfered corners supported by stylized brackets.

Date: ca. 1900

1 contributing building

53. **W side Logan Street, N of Fifth Avenue (Verizon Telephone Company Building)**, commercial

Description: 2-story public utility building. Polished marble foundation, red brick above, steel framed windows.

Date: ca. 1950

1 contributing building

54. **509 Logan Street**, residential

Description: 1½-story wood frame cottage with intersecting gable roof and hipped roof porch on the facade supported by Doric columns. Steel framed windows.

Date: ca. 1950

1 contributing building

55. **511 Logan Street**, residential

Description: 2-story American Foursquare, wood, hipped-roof, centered gable, two bay facade, main entrance offset. Hipped roof porch with replacement support.

Date: ca. 1920

1 contributing building

56. **513 Logan Street**, residential

Description: 1½-story L-shaped vernacular cottage of wood with hipped-roof and projecting gable roofed section on the facade with a porch in the angle of the L. Fenestration is flat-topped set singly and in groups of three with no notable ornament.

Date: ca. 1920

1 contributing building

57. **11 Sixth Street**, commercial

Description: 1-story frame building built outside the period of significance.

date: ca. 1970

1 non-contributing building

United States Department of the Interior
National Park Service

National Register of Historic Places
Continuation Sheet

Williamson Historic District
Mingo County, WV

Section Number 7 Page 14

58. **13 Sixth Street**, residential
Description: 1½-story L-shaped cottage of wood construction with 1-story porch in the angle of the ell
Date: ca. 1900
1 contributing building
59. **Harvey and Sixth corner**,
Description: 1-story modern building faced in cobblestone built outside the period of significance.
Date: c. 1980
1 non-contributing building
60. **--- Alderson Street**, church-related residential
Description: 2-story vernacular brick residence with an upper story cantilevered porch of wood construction built of concrete block faced in brick. Fenestration flat-topped with original steel-framed windows. Second story porch is originally enclosed with multi-light windows. "Rev. R.A. Lewis, Pastor" inscribed in a cornerstone.
Date: 1955
1 contributing building
61. **W side Logan Street, N of Fourth Avenue (Masonic Lodge Building)**, fraternal
Description: 3-story Neo-Classical Revival vernacular building with a scored concrete finish on the first story, and the upper stories finished in yellow brick. Flat topped fenestration with some alteration. A stylized Neo-Classical Revival frontispiece is the entrance with Masonic symbols and then 5930. Construction of building is red brick faced in yellow brick and concrete panels.
Date: 1930
1 contributing building
62. **W side Logan Street, S of Fifth Avenue**, apartment building
Description: yellow brick apartment building/office building with ribbon windows and a centered entryway. In a semi-circular arch of the keystone bearing the inscription: "S" and the date 1938.
Date: 1938
1 contributing building
63. **400 (?) Pike Street at Fourth Avenue**, commercial
Description: 4-story commercial building of brick construction with a large overhead garage bay and a storefront on the first story. Four bay facade with original paired flat-topped windows.
Date: ca. 1920
1 contributing building
64. **416 Pike Street**, residential
Description: 2-story vernacular residence of wood hipped roof, 2-bay facade, front porch partially enclosed with double-hung windows.

United States Department of the Interior
National Park Service

National Register of Historic Places
Continuation Sheet

Williamson Historic District
Mingo County, WV

Section Number 7 Page 15

Date: ca. 1920
1 contributing building

65. **418 Pike Street**, residential
Description: 2-story vernacular residence of wood construction set on a foundation of red brick with the front porch removed with loss of integrity.
Date: ca. 1910
1 non-contributing building
66. **422 Pike Street**, residential
Description: 2-story vernacular residence of wood construction with a modern porch with loss of integrity.
Date: c. 1980
1 non-contributing building
67. **424 Pike Street**, residential
Description: 2-story vernacular residence gable roof. Gable end orientation to the street. Gable end oriented front porch. Two car garage built into the hillside.
Date: ca. 1920
1 contributing building
68. **426 Pike Street**, residential
Description: 2-story American Foursquare two bays enclosed front porch two bay garage in the foundation.
Date: ca. 1920
1 contributing building
69. **428 Pike Street**, residential
Description: 2-story vernacular residence with gable roof and gable end orientation. Exterior is clad in asphalt shingles. Gable end oriented porch. Garage built into the hillside.
Date: ca. 1920
1 contributing building
70. **430 Pike Street**, residential
Description: 1-story ranch style house. Flattened U-shaped facade. With a garage built into the hillside at the side of the building. Hipped roof original steel frame windows.
Date: ca. 1950.
1 contributing building
71. **510 Logan Street**, residential
Description: 1½-story red brick Bungalow with laterally-oriented gable roof and large gable dormer on the facade; gable-end-oriented porch of brick and wood fenestration. Fenestration flat-topped.
Date: ca. 1920.
1 contributing building

United States Department of the Interior
National Park Service

National Register of Historic Places
Continuation Sheet

Williamson Historic District
Mingo County, WV

Section Number 7 Page 16

72. **510 Logan Street (rear)**, residential
Description: Behind it is a three story yellow brick apartment house with red mortar and gable roof; 3-story open wood porch. Fenestration flat-topped without notable ornament.
Date: c. 1920
1 contributing building
73. **510 Pike Street**, commercial/residential
Description: 2-story commercial/residential building with first story of brick and second story of rock-faced concrete block. Fenestration flat-topped with metal awnings. Commercial/office space on the first story, residential above.
Date: ca. 1950.
1 contributing building
74. **604 Pike Street (Central Fruit Company)**, commercial
Description: 2-story commercial building of red brick construction with store fronts and overhead garage doors on the first story. Some display windows, metal steel frame windows.
Date: c. 1920
1 contributing building
75. **608 Logan Street**, commercial
Description: 2-story commercial building with storefront on the first story, residential above built of tile construction with a red brick facade. Original steel frame windows intact. Flat roof.
Date: ca. 1950
1 contributing building
76. **608 (?) Logan Street**, commercial
Description: 1-story commercial building of red brick construction. Flat roof. Storefront with recessed entry.
Date: ca. 1950
1 contributing building
77. **610-612 Logan Street**, commercial/residential
Description: 2-story commercial/residential building with commercial storefront in filled with synthetic lava rock, with loss of integrity.
Date: ca. 1950
1 non-contributing building
78. **614 Logan Street (Masonic Lodge)**, fraternal
Description: red brick hipped-roofed vernacular building with six-over-one windows irregularly placed
Date: ca. 1900
1 contributing building
79. **618 (?) Logan Street (First Baptist Church)**, religious
Description: Vernacular Romanesque-Revival church building of brick construction with a variety of additions and alterations, the last of which according to a date stone was begun in

United States Department of the Interior
National Park Service

National Register of Historic Places
Continuation Sheet

Williamson Historic District
Mingo County, WV

Section Number 7 Page 17

1954. Original church was built in 1895.
1 contributing building
80. **106 Joseph Street**, residential
Description: 2-story vernacular residence gable roof gable end orientation to the street insul-brick gable end oriented front porch with exposed rafters.
Date: ca. 1920
1 contributing building
81. **408 Joseph Street**, residential
Description: 2-story vernacular wood gable roof gable end gable roofed porch with exposed rafters.
Date: ca. 1920
1 contributing building
82. **412 (?) Joseph Street**, residential
Description: 2-story vernacular residence with a laterally-oriented gable roof and paired dormers on 3-bay facade; centered entrance with pediment portico.
Date: ca. 1920
1 contributing building
83. **418 Joseph Street**, residential
Description: 2-story L-shaped vernacular residence wood intersecting gable roof asbestos shingles brick porch extends across the facade.
Date: ca. 1920
1 contributing building
84. **420 (?) Joseph Street**, residential
Description: 2-story American Foursquare of glazed yellow brick with hipped-roof and hipped dormer. Three bay facade on first story with centered entrance; two bay facade on second story. 1-story hipped roof porch of brick extends across the facade.
Date: ca. 1920
1 contributing building
85. **123 Joseph Street**, residential
Description: 2-story Dutch-Revival residence of red brick construction with gambrel roof and large shed dormers front and back along with a pent roof extending across the facade with a segmental-arched pediment shielding the main entrance which is offset on the facade. Fenestration is flat-topped with exterior shutters and six-over-one windows.
Date: ca. 1920
1 contributing building
86. **119 Joseph Street**, residential
Description: 2-story American Foursquare of brick with a pyramidal roof and pyramidal two bay facade; hipped roof porch supported by wood posts set on brick piers.
Date: ca. 1910

United States Department of the Interior
National Park Service

National Register of Historic Places
Continuation Sheet

Williamson Historic District
Mingo County, WV

Section Number 7 Page 18

1 contributing building

87. **113 Joseph Street**, residential
Description: 2-story vernacular residence of ceramic tile block construction. 2-story front porch with partial replacement balustrade.
Date: ca. 1910
1 contributing building
88. **109 Joseph Street (Lewis Apartments)**
Description: 2-story brick apartment building with the facade painted and with the side elevations unpainted red brick. Stylized parapet and a stone plaque bearing the name Lewis Apartments with the n reversed. A paint "ghost" on the front of the building indicates the original presence of a 2-story porch which has been replaced by the existing 1-story porch. Fenestration is flat-topped with four-over one windows on the side elevations and some sash on the facade including "Queen Anne Style" with twelve-over-one lights.
Date: ca. 1910
1 contributing building
89. **107 Joseph Street**, residential
Description: 2-story vernacular double house of wood construction clad in non-historic siding with 2-story brick porch on the facade. Windows flat-topped.
Date: ca. 1910
1 contributing building
90. **College Hill (Synagogue Congregation B'Nai Israel)**, religious
Description: red brick synagogue vernacular in character. Date stone indicates the congregation was organized in 1920 and the church built in 1927. Irregularly massed building on a steep side hill elevation. Irregular roof plan, a portion of it is gable roofed with a wheel window with Star of David. Some leaded glass windows
Date: 1927
1 contributing building
91. **1 College Hill**, residential
Description: 2-story stone cottage laterally-oriented gable roof and paired gable dormers on the facade with stylized windows and an original Medieval-style door with strap hinges. In front the street address has an entry gate bearing the initials LBC manufactured by the Stuart Iron Works of Cincinnati.
1 contributing building
92. **709 College Hill**, residential
Description: 2-story American Foursquare of red brick with a hipped roof and hipped dormers and gable end front porch enclosed with operable sash.
1 contributing building
93. **708 College Hill**, residential
Description: 1-story stone and wood cottage 1-story in height with some Colonial Revival

United States Department of the Interior
National Park Service

National Register of Historic Places
Continuation Sheet

Williamson Historic District
Mingo County, WV

Section Number 7 Page 19

detailing including a stylized pedimented hood over the main entrance.

Date: ca. 1920

1 contributing building

94. **606 College Hill**, residential

Description: 2-story American Foursquare with the first story clad in artificial stone with a loss of integrity.

Date: ca. 1920.

1 non-contributing building

95. **715 College Hill**, residential

Description: 2-story yellow brick residence vernacular in character with a pyramidal roof and hipped dormer and a 2-story porch on the facade which is entered at grade. Fenestration is flat-topped with four-over-one sash.

Date: ca. 1930

1 contributing building

96. **side, 715 College Hill**

Description: a corrugated metal sided garage built on a concrete block foundation with a gabled roof clad in rolled roofing.

Date: ca. 1950

1 contributing building

97. **719 (?) College Hill**, residential

1-story ranch-style house of red brick with hipped roof

Date: ca. 1950

1 contributing building

98. **563 Maple**, residential

Description: 1-story ranch style house on a raised foundation; of wood construction laterally-oriented gable roof.

Date: ca. 1950

1 contributing building

99. **565 (?) Maple**, residential

Description: 1-story vernacular cottage of wood construction with laterally-oriented gable roof and a forward projecting gabled L on the facade. 1-story porch in the angle of the ell.

Date: ca. 1960

1 non-contributing building

100. **side, 565 (?) Maple**, dependency

Description: 1-story dependency of wood construction with board and batten finish gable roof gable end orientation to the street.

Date: ca. 1900

1 contributing building

United States Department of the Interior
National Park Service

National Register of Historic Places
Continuation Sheet

Williamson Historic District
Mingo County, WV

Section Number 7 Page 20

101. **569 Maple**, residential
Description: 2-story vernacular residence of yellow brick construction, built outside the period of significance of the district
Date: ca. 1960
1 non-contributing building
102. **555 Maple**, residential
Description: 1-story ranch style house with a projecting carport attached. Red brick construction steel frame windows.
Date: ca. 1950
1 contributing building
103. **Maple Walk, S of Joseph Street**, funerary
Description: early cemetery with several graves of Williamson family, including Benjamin Williamson Jr. (1808-1880) and Benjamin Williamson Sr., died June 6, 1854. Several very rudimentary carved stones and one burial site set off from the others with a concrete barrier said to be the grave of a slave. Large stone in the middle inscribed as the H.S. Williamson family memorial.
Date: 1854 and after
1 contributing site
104. **570 Maple**, residential
Description: 2 ½ story American Foursquare of yellow brick with a pyramidal roof and hipped-roof dormers; three bay facade with 1-story hipped-roof porch supported by battered brick piers with a brick balustrade. House is enclosed in a stone and wrought cast iron fence along a portion of the perimeter.
Date: ca. 1920
1 contributing building
105. **560 (?) Maple Walk**, residential
Description: Neo-Classical Revival painted brick house with hipped roof with gabled wings and monumental pedimented portico on the facade.
Date: 1896
1 contributing building
106. **558 (?) Maple Walk**, residential
Description: 2-story American Foursquare of ornamental yellow brick hipped roof and hipped dormers; three bay facade with an offset entrance with side lights and transom. Fenestration flat-topped.
Date: ca. 1920
1 contributing building
107. **551 Maple Walk**, residential
Description: 1-story ranch style house of multi-color brick construction.
Date: ca. 1955
1 contributing building

United States Department of the Interior
National Park Service

National Register of Historic Places
Continuation Sheet

Williamson Historic District
Mingo County, WV

Section Number 7 Page 21

108. **548-550 Maple Walk**, residential
Description: 2½-story American Foursquare double house of red brick with hipped-roof and hipped-dormer. Symmetrically arranged matching facade. Brick porch.
Date: ca. 1920
1 contributing building
109. **547 Maple Walk**, residential
Description: 2-story cottage of wood construction gable roof gable end orientation to the street.
Date: ca. 1900
1 contributing building
110. **545 Maple Walk**, residential
Description: 2-story cottage of wood construction gable roof gable end orientation to the street.
Date: ca. 1900
1 contributing building
111. **543 Maple Walk**, residential
Description: Jerkin head-roofed cottage of 1-story clad in shiplap siding with gable end oriented front porch.
Date: c. 1910
1 contributing building
112. **541 Maple Walk**, residential
Description: Laterally-oriented gable roof cottage clad in asphalt shingles with hipped dormer.
Date: ca. 1900
1 contributing building
113. **542 Maple Walk**, residential
Description: 2-story Dutch Colonial Revival residence brick first story frame second story some alteration of fenestration but generally retaining historic character. Fenestration flat-topped centered entry on the facade 2-story porch.
Date: ca. 1920
1 contributing building
114. **539 Maple Walk**, residential
Description: 2-story vernacular residence wood construction with shiplap siding; recessed porch in the angle of the facade; fenestration flat-topped, 4/1
Date: ca. 1900
1 contributing building
115. **537 Maple Walk**, multi-family residential
Description: Apartment building of brick, with a brick foundation; vinyl siding. Fenestration is flat-topped without notable detail.
Date: ca. 1900
1 contributing building

United States Department of the Interior
National Park Service

National Register of Historic Places
Continuation Sheet

Williamson Historic District
Mingo County, WV

Section Number 7 Page 22

116. **536 Maple Walk**, residential
Description: Substantial 2½-story Arts and Crafts style residence of brick construction with a three story porch on the facade. First story of porch is supported by brick piers and the second story by wood posts with sawn balustrade. Centered entrance with sidelights.
Date: ca. 1920
1 contributing building
117. **535 Maple Walk**, residential
Description: 2-story vernacular residence T-shaped in form, with the front porch enclosed. Non-historic siding replacement windows but generally in character with the historic appearance of the house.
Date: ca. 1900
1 contributing building
118. **533 Maple Walk**, residential
Description: 2-story American Foursquare with hipped roof and two bay facade; original shiplap siding and four-over-one windows.
Date: ca. 1920
1 contributing building
119. **534 (?) Maple Walk**, residential
Description: 1-story stone cottage with laterally-oriented standing seam metal roof; recessed front porch was enclosed early with operable windows.
Date: ca. 1920
1 contributing building
120. **528 (?) Maple Walk**, residential
Description: 2-story American Foursquare of brick with hipped roof; front porch of brick set on a foundation of sandstone. Three bay facade on first story with centered entrance. Two bay facade above; fenestration flat topped with rock-faced stone sills and lintels.
Date: ca. 1920
1 contributing building
121. **527 Maple Walk**, residential
Description: 3 story American Foursquare double house of wood with much of the side walls finished in shiplap siding; fenestration flat-topped with four-over-one windows and one-over-one windows. 2-story porch on the facade. Three story balconies on rear overlooking City Hall.
Date: ca. 1920
1 contributing building
122. **526 Maple Walk**, residential
Description: 2-story vernacular residence of brick construction with gable roof and gable end orientation to the street with a full return of the cornice. Front porch partially glass-enclosed.
Date: ca. 1920
1 contributing building

United States Department of the Interior
National Park Service

National Register of Historic Places
Continuation Sheet

Williamson Historic District
Mingo County, WV

Section Number 7 Page 23

123. **525 (?) Maple Walk**, residential
Description: 2-story American Foursquare of wood with hipped roof and hipped-roofed porch; three-over-one windows.
Date: ca. 1920
1 contributing building
124. **523 (?) Maple Walk**, residential
Description: 2-story American Foursquare finished in stone; hipped roof and three bays on the first story with art glass windows; two bays above. Hipped-roof porch of stone.
Date: ca. 1920
1 contributing building
125. **6 Russell Street**, residential
Description: 2-story vernacular residence gable end orientation two bay facade gable roof front porch partially enclosed.
Date: ca. 1920
1 contributing building
126. **4 Russell Street**, residential
Description: 2-story vernacular residence of wood construction, hipped-roof with hipped-roof porch; shiplap siding; deteriorated condition but nonetheless retaining enough integrity to contribute to the character of the district.
Date: ca. 1920
1 contributing building
127. **2 Russell Street**, residential
Description: 2-story American Foursquare wood construction pyramidal roof two bay facade hipped roof porch; non-historic siding.
Date: ca. 1920
1 contributing building
128. **1 Russell Street**, residential
Description: 2-story vernacular residence with gable roof and gable end orientation; gable roof porch; fenestration flat-topped.
Date: ca. 1920
1 contributing building
129. **3 Russell Street**, residential
Description: 2-story vernacular residence with gable roof and gable-end orientation; enclosed gable roofed front porch. Fenestration flat-topped three-over-one.
Date: ca. 1920
1 contributing building
130. **519 Maple Walk**, residential
Description: 2-story Colonial Revival vernacular residence of brick construction with a semi-

United States Department of the Interior
National Park Service

National Register of Historic Places
Continuation Sheet

Williamson Historic District
Mingo County, WV

Section Number 7 Page 24

circular fanlight in the pediment. Some alteration of the fenestration.

Date: ca. 1920

1 contributing building

131. **520 Maple Walk**, residential

Description: 2-story American Foursquare of brick with a hipped roof and hipped dormer; two bay facade with the main entrance offset on the right side of the facade; brick porch.

Date: ca. 1920

1 contributing building

132. **516 Maple Walk**, residential

Description: 2-story brick and wood vernacular residence built in several stages with a hipped-roof and brick front porch; flat-topped fenestration

Date: ca. 1920

1 contributing building

133. **509 Maple Walk**, residential

Description: 2-story vernacular residence with a laterally-oriented gable roof; built on a raised foundation of concrete block.

Date: ca. 1950

1 contributing building

134. **507 Maple Walk**, residential

Description: 2-story American Foursquare built on a raised brick foundation; wood construction with a hipped-roof and hipped-roof front porch.

Date: ca. 1920

1 contributing building

135. **508 Maple Walk**, residential

Description: 2-story vernacular residence of brick with gable roof and hipped-roof front porch; fenestration flat-topped set singly and in pairs; main entrance offset on the left side.

Date: ca. 1920

1 contributing building

136. **505 (?) Maple Walk**, residential

Description: 1-story brick cottage with a hipped gable roof; pedimented hood shielding the main entrance; steel frame windows.

Date: ca. 1950

1 contributing building

137. **506 Maple Walk**, residential

Description: 2-story buff brick gable-roofed house with Arts and Crafts style porch; round arched entryway with a round-arched hood.

Date: ca. 1920

1 contributing building

United States Department of the Interior
National Park Service

National Register of Historic Places
Continuation Sheet

Williamson Historic District
Mingo County, WV

Section Number 7 Page 25

138. **582 Elm Street**, residential
Description: 2-story vernacular residence of brick construction; a twin to its neighbor to the right. Hipped roof and shallow hipped dormers; enclosed porch but sensitive to the character of the building.
Date: ca. 1920
1 contributing building
139. **580 Elm Street**, residential
Description: 2-story vernacular residence of brick construction with minor modifications to the exterior but generally in keeping with the character of the property.
Date: ca. 1920
1 contributing building
140. **Elm Street**, garage
Description: 1-story concrete block flat-roofed garage built into the side hill
Date: ca. 1920
1 contributing building
141. **556 Elm Street**, residential
Description: 2-story garage apartment of brick with three garage bays on the first floor, a wood porch on the side elevation, and a flat roof.
Date: ca. 1920
1 contributing building
142. **546 (?) Elm Street**, residential
Description: 2-story garage apartment two garage bays apartment above.
Date: ca. 1920
1 contributing building
143. **W side, Elm Street**, garage
Description: 1-story concrete block garage in poor condition integrity.
Date: c. 1940
1 non-contributing building
144. **E side, Elm Street**, residential
Description: 2-story residence of brick, vernacular in character with no notable ornament
Date: ca. 1950
1 contributing building
145. **W side, Pike Street, N of Fourth Avenue**, commercial
Description: a former church converted to various commercial uses with several additions including that of a creamery; one bricked-in lancet-arched window remains visible. The creamery portion of the building has distinctive masonry piers whose bases are embossed with milk bottles
Date: c. 1900
1 contributing building

United States Department of the Interior
National Park Service

National Register of Historic Places
Continuation Sheet

Williamson Historic District
Mingo County, WV

Section Number 7 Page 26

146. **128 Fifth Avenue**, residential
Description: 1½-story Bungalow of buff-colored brick construction with a laterally-oriented gable roof and a shingled shed roofed dormer; arcaded front porch with the main entrance articulated by sidelights; garage original in the basement.
Date: ca. 1920
1 contributing building
147. **124 Fifth Avenue**, residential
Description: 1½-story cottage with hipped roof and hipped dormer; six-over-six windows; inset porch on the right front corner.
Date: ca. 1950
1 contributing building
148. **122 Fifth Avenue**, residential
Description: 1-story brick cottage with several additions and alterations clad in T-111 with loss of integrity
Date: ca. 1920
1 non-contributing building
149. **120 Fifth Avenue**, residential
Description: Split-level brick and frame house built outside the period of significance.
Date: c. 1960
1 non-contributing building
150. **118 West Fifth Avenue**, residential
Description: residential building built outside the period of significance.
Date: c. 1970
1 non-contributing building
151. **114 (?) West Fifth Avenue**, residential
Description: 1½-story cottage of wood construction clad in asbestos shingles with flat-topped fenestration and intersecting gable roof with a porch along the east side. Set on a brick foundation.
Date: ca. 1900
1 contributing building
152. **108 Fifth Avenue**, residential
Description: 2-story residence of brick construction with a 2-story porch, American Foursquare in character with the main entrance offset on the right side of the facade; built of red brick with multi-light windows.
Date: ca. 1920
1 contributing building
153. **104 Fifth Avenue**, residential
Description: 1-story vernacular cottage with pyramidal roof and three bay facade with hipped-roof front porch supported by Doric columns.

United States Department of the Interior
National Park Service

National Register of Historic Places
Continuation Sheet

Williamson Historic District
Mingo County, WV

Section Number 7 Page 27

Date: ca. 1910

1 contributing building

154. **102 Fifth Avenue**, residential

Description: 1-story ranch style of house wood construction built outside the period of significance.

Date: c. 1960

1 non-contributing building

155. **40 Fifth Avenue**, residential

Description: 2-story vernacular residence of wood construction clad in artificial stone with loss of integrity.

Date: ca. 1920

1 non-contributing building

156. **34 Fifth Avenue**, residential

Description: 1½-story cottage with gable roof and gable end orientation to the street; some multi-light "Queen Anne" windows retained. L-shaped facade with a porch in the angle of the ell.

Date: ca. 1910

1 contributing building

157. **32 Fifth Avenue**, residential

Description: 1-story vernacular cottage of wood construction with an intersecting gable roof with flat-topped fenestration and a shed-roofed porch in the angle of the ell.

Date: ca. 1910

1 contributing building

158. **38 West Fifth Avenue**, residential

Description: 2-story stylized Dutch Colonial Revival residence of brick construction with a gambrel roof intersected by large shed dormers front and rear; the facade is further penetrated by a series of gables rising from the front porch which is asymmetrically set on the facade.

Date: ca. 1920

1 contributing building

159. **22 Fifth Avenue**, residential

Description: Distinctive 1-story cottage with hipped roof and three bay facade with the main entrance centered thereon, recessed within a one bay loggia. Fenestration is flat-topped with four-over-one lights; on the left front corner is a 1½-story square tower and on the left elevation is a 1-story bay window.

Date: ca. 1920

1 contributing building

160. **20 Fifth Avenue**, residential

Description: 2-story vernacular residence with hipped roof and hipped dormer; projecting wing on the facade with chamfered corners on the first floor; 1-story porch in the angle of the ell.

United States Department of the Interior
National Park Service

National Register of Historic Places
Continuation Sheet

Williamson Historic District
Mingo County, WV

Section Number 7 Page 28

Fenestration flat-topped, one-over-one.

Date: ca. 1900

1 contributing building

161. **16 Fifth Avenue**, residential

Description: 2½-story Bungalow of brick construction with a laterally-oriented gable roof and a stuccoed shed dormer extending across much of the facade, beneath which is a recessed front porch. Three bays in width with a centered entry set off by sidelights.

Date: ca. 1920

1 contributing building

162. **10 (?) Fifth Avenue**, residential

Description: 2-story American Foursquare of brick construction with hipped-roof and hipped-dormer; one bay on the second story and two bays on the first floor incorporating an offset entryway; hipped-roof front porch supported by Doric columns.

Date: ca. 1910

1 contributing building

163. **2 East Fifth**, residential

Description: 2-story vernacular residence of wood set on a stone foundation with a laterally-oriented gable roof and a large hipped dormer offset on the right side of the facade.

Date: ca. 1900

1 contributing building

164. **506 Harvey Street** (First Baptist Church), religious

Description: Gothic Revival-style brick church with lancet-arched windows and a square corner tower incorporating oculi in the second stage and a louvered belfry in the third. It appears that the original stained glass windows have been replaced with windows of modern stained glass derivation.

Date: c. 1920

1 contributing building

165. **10 West Fifth Avenue**, residential

Description: One of three nearly repetitive houses of brick construction, two stories in height with hipped roof; two bay facade on the second story, three bay facade on the first, with the main entrance centered thereon. Fenestration is flat-topped with rock-faced stone sills and lintels; gable-roofed front porch.

Date: ca. 1910

1 contributing building

166. **12 West Fifth Avenue**, residential

Description: One of three nearly repetitive houses of brick construction, two stories in height with hipped roof; two bay facade, with the main entrance centered thereon. Fenestration is flat-topped with rock-faced stone sills and lintels; gable-roofed front porch.

Date: ca. 1910

1 contributing building

United States Department of the Interior
National Park Service

National Register of Historic Places
Continuation Sheet

Williamson Historic District
Mingo County, WV

Section Number 7 Page 29

167. **14 West Fifth Avenue**, residential
Description: One of three nearly repetitive houses of brick construction, two stories in height with hipped roof; two bay facade, with the main entrance centered thereon. Fenestration is flat-topped with rock-faced stone sills and lintels; gable-roofed front porch.
Date: ca. 1910
1 contributing building
168. **131 Fifth Avenue**, residential
Description: 1-story L-shaped cottage of wood construction with some board and batten finish retained; other sections clad in T-111.
Date: ca. 1900.
1 contributing building
169. **125-127 Fifth Avenue**, residential
Description: 2-story double house of brick construction with matching sides on the facade. A full portico has been added at an indeterminate time likely during the period of significance.
Date: ca. 1900
1 contributing building
170. **123 Fifth Avenue**, residential
Description: 2-story stylized American Foursquare double house of brick construction with a hipped-roof and hipped-dormer and a second story sunroom over a front porch; paired entries on the facade.
Date: ca. 1920
1 contributing building
171. **121 Fifth Avenue**, residential
Description: 1-story wood cottage with intersecting gable roof and a hipped-roof front porch supported by Doric columns. Exterior surfaces clad in asbestos shingles; fenestration one-over-one set singly and in pairs.
Date: ca. 1900
1 contributing building
172. **119 Fifth Avenue**, residential
Description: 2-story vernacular residence of brick construction with a gable roof and gable end orientation to the street. A 2-story bay window capped by a gable roof projects from the left side of the facade and the main entrance is offset on the right side. 1-story hipped-roof porch supported by brick piers and incorporating a brick balustrade.
Date: ca. 1920
1 contributing building
173. **117 Fifth Avenue**, residential
Description: 2-story residence of wood construction with exterior clad in plywood with loss of integrity.
Date: ca. 1900
1 non-contributing building

United States Department of the Interior
National Park Service

National Register of Historic Places
Continuation Sheet

Williamson Historic District
Mingo County, WV

Section Number 7 Page 30

174. **113-115 Fifth Avenue**, residential
Description: 2-story vernacular double house of wood construction with paired gables on the facade and matching sunrooms enclosed in operable six-over-six windows set in line. Fenestration is flat-topped.
Date: ca. 1910
1 contributing building
175. **107 Fifth Avenue**, residential
Description: 2-story vernacular residence of wood construction with an intersecting gable roof; clad in weatherboard siding with decorative shingling in the pediments of the gables. 1-story porch on the left side and a 1-story addition on the right. Foundation clad in rock-faced simulated metal.
Date: ca. 1910
1 contributing building
176. **105 Fifth Avenue**, residential
Description: 1-story vernacular cottage of wood construction with laterally-oriented gable roof and forward projecting gable end oriented wing on the facade. Fenestration flat-topped one-over-one.
Date: ca. 1900
1 contributing building
177. **101-103 Fifth Avenue**, residential
Description: 2-story vernacular double house of wood construction clad in asphalt shingles with a symmetrical facade incorporating side passage entryway and a hipped-roof porch with a centered pediment. Fenestration flat-topped, on-over-one set singly and in groups.
Date: ca. 1910
1 contributing building
178. **39 Fifth Avenue**, residential
Description: 2-story American Foursquare of brick construction with gablets penetrating the slopes of the roof, trimmed in imbricated shingles. Two bay facade with a hipped-roof front porch supported by brick piers and trimmed with a brick balustrade. Windows flat-topped with rock faced sills and lintels.
Date: ca. 1920
1 contributing building
179. **35 Fifth Avenue**, residential
Description: 1-story brick cottage with intersecting gable roof and a gable roofed entry pavilion on the facade; fenestration is flat-topped with brick sills and soldier course brick lintels. A brick chimney trimmed in sandstone rises on the facade.
Date: ca. 1940
1 contributing building
180. **31 Fifth Avenue**, residential
Description: 2-story American Foursquare with hipped roof and hipped-dormer; two bay facade

United States Department of the Interior
National Park Service

National Register of Historic Places
Continuation Sheet

Williamson Historic District
Mingo County, WV

Section Number 7 Page 31

with hipped-roof front porch and the main entrance offset on the left side, including side lights and transom. Exterior clad in asbestos shingles.

Date: ca. 1920

1 contributing building

181. **29 Fifth Avenue**, residential

Description: 1-story vernacular cottage of wood construction with a hipped-roof dormer on the facade and a hipped-roof porch supported by Doric columns. Three bay facade with centered entry.

Date: ca. 1910

1 contributing building

182. **27 Fifth Avenue**, residential

Description: 2-story American Foursquare of wood construction with a hipped-roof and two bay facade; extending across the facade is a 1-story hipped-roof porch.

Date: ca. 1920

1 contributing building

183. **25 Fifth Avenue**, residential

Description: 2-story American Foursquare of wood construction with hipped-roof and hipped-dormers; two bay facade with hipped-roof front porch.

Date: ca. 1920

1 contributing building

184. **23 Fifth Avenue**, residential

Description: 2-story American Foursquare of wood construction clad in asbestos shingles, with a two bay facade and the original front porch enclosed. Fenestration is flat-topped, without notable ornament.

Date: ca. 1920

1 contributing building

185. **21 Fifth Avenue**, residential

Description: 2-story vernacular residence of brick construction with gable roof and gable-end orientation to the street. One of three adjacent repetitive houses. 1-story gable-end-oriented front porch with a sunroom on the left side enclosed by operable six-over-one sash; other fenestration is flat-topped, six-over-one; main entrance is offset on the right side of the facade with side lights flanking the main door.

Date: c. 1920

1 contributing building

186. **19 Fifth Avenue**, residential

Description: 2-story vernacular residence of brick construction with gable roof and gable-end orientation to the street. One of three adjacent repetitive houses. 1-story gable-end-oriented front porch with a sunroom on the left side enclosed by operable six-over-one sash; other fenestration is flat-topped, six-over-one; main entrance is offset on the right side of the facade with side lights flanking the main door.

United States Department of the Interior
National Park Service

National Register of Historic Places
Continuation Sheet

Williamson Historic District
Mingo County, WV

Section Number 7 Page 32

Date: c. 1920
1 contributing building

187. **17 Fifth Avenue**, residential
Description: 2-story vernacular residence of brick construction with gable roof and gable-end orientation to the street. One of three adjacent repetitive houses. 1-story gable-end-oriented front porch with a sunroom on the left side enclosed by operable six-over-one sash; other fenestration is flat-topped, six-over-one; main entrance is offset on the right side of the facade with side lights flanking the main door.
Date: c. 1920
1 contributing building
188. **11 Fifth Avenue (Church of Christ)**, religious
Description: 1-story Gothic Revival vernacular church of brick construction with a contemporary tower on the facade. Red brick surfaces; some side windows have been blocked up. The building lacks a date stone.
Date: ca. 1920
1 contributing building
189. **9 Fifth Avenue**, commercial
Description: Commercial building of two stories, brick construction with face brick facade and five-bay upper facade. Windows presently boarded over. Originally built with a performance hall, following a fire the third story was removed, likely within the period of significance.
Date: ca. 1920
1 contributing building
190. **Fifth Avenue at Harvey Street**, residential
Description: 2-story vernacular residence of wood construction clad in asbestos shingles with a 2-story porch on the facade. Windows flat-topped one-over-one with replacement sash. Building has been converted for a bed and breakfast inn.
Date: ca. 1910
1 contributing building
191. **5-7 Fifth Avenue**, residential
Description: 2-story vernacular double house of brick construction with a hipped-roof and forward projecting matching gables on the facade which is symmetrically oriented with each side matching the other in mirror image. The fenestration is flat-topped with some modification having been undertaken on the windows; extending across the facade is a 1-story hipped-roof porch supported by paneled wood posts set on brick piers and trimmed with a brick balustrade.
Date: ca. 1910
1 contributing building
192. **11 (?) Fifth Avenue**, residential
Description: 2-story residence of brick construction with radical alterations to exterior surface and fenestration with a loss of integrity.
Date: ca. 1910

United States Department of the Interior
National Park Service

National Register of Historic Places
Continuation Sheet

Williamson Historic District
Mingo County, WV

Section Number 7 Page 33

1 non-contributing building.

193. **17-19 Fifth Avenue**, residential
Description: 2-story vernacular former residential building with a jerkin-head gable roof, which has been converted to office use with an apartment above. The entrance to the apartment is shielded by a pedimented hood while the entrance to the office is shielded by a gable end oriented porch. It appears that this building has always served as two distinct uses.
Date: ca. 1910
 1 contributing building
194. **5,7,9,11 Sixth Avenue**, multi-family residential
Description: Fourplex of wood construction two stories in height with laterally-oriented gable roof and gablets identifying each of the four units. Windows flat-topped set singly and in pairs a 1-story porch set on a foundation of brick extends across the entire facade supported by plain wood posts.
Date: ca. 1900
 1 contributing building
195. **13 Sixth Avenue**, residential
Description: 2-story vernacular residence of wood construction with a hipped-roof and a double gallery porch extending across the facade. Building is a double house fenestration flat-topped without notable ornament.
Date: ca. 1920
 1 contributing building
196. **15 Sixth Avenue**, residential
Description: 2-story American Foursquare wood construction hipped-roof hipped-dormers hipped-roof front porch extending across the facade. Two bay facade.
Date: ca. 1920
 1 contributing building
197. **17 Sixth Avenue**, residential
Description: 2-story American Foursquare of wood construction with hipped-roof; hipped-dormers and two bay facade with a gable end oriented front porch. Fenestration flat-topped with replacement windows.
Date: ca. 1920
 1 contributing building
198. **19 Sixth Avenue**, residential
Description: 2-story vernacular residence of wood construction with a hipped-roof and a forward projecting gable-roofed section on the left side of the facade. Fenestration is flat-topped and the pediment of the gable on the facade is imbricated and other decorative shingling. 1-story hipped roof porch supported by turned posts and trimmed with sawn brackets.
Date: ca. 1900
 1 contributing building

United States Department of the Interior
National Park Service

National Register of Historic Places
Continuation Sheet

Williamson Historic District
Mingo County, WV

Section Number 7 Page 34

199. **21 Sixth Avenue**, residential
Description: 2-story vernacular residence of wood construction with hipped-roof and forward projecting gabled section. Fenestration flat-topped without notable ornament.
Date: ca. 1900
1 contributing building
200. **29 West Sixth Avenue (First Presbyterian Church)**, religious
Description: Romanesque Revival-style brick church L-shaped in plan with the facade incorporating three round-arched entry portals. The red brick surfaces are trimmed in sandstone; art glass is found throughout. Cornerstone dates the building to 1939.
Date: 1939
1 contributing building
201. **39 (?) Sixth Avenue**, residential
Description: 2-story vernacular residence of wood construction with gable roof and gable end orientation to the street. Three bay facade with centered entry open stair leads to a side porch accessing a door to the second story.
Date: ca. 1930
1 contributing building
202. **37 Sixth Avenue**, residential
Description: 2-story American Foursquare of ornamental brick construction with hipped-roof and hipped-dormer. Two bay facade with the main entrance offset on the right side, articulated by side lights fenestration is flat-topped with three-over-one lights extending across the facade is a hipped roof porch supported by battered paneled wood posts set on tall brick piers and incorporating a brick balustrade.
Date: ca. 1920
1 contributing building
203. **39 Sixth Avenue**, residential
Description: 2-story American Foursquare of red brick construction with pyramidal roof and hipped dormers two bay facade on the first story three bay facade on the second story. Fenestration is flat-topped, one-over-one. Hipped roof porch supported by brick piers and trimmed with a brick balustrade extends across the facade.
Date: ca. 1920
1 contributing building
204. **113 Sixth Avenue**, residential
Description: 2-story American Foursquare of brick construction with a hipped-roof and large gable on the facade. The facade is three bays in width with the main entrance offset on the left side broad overhanging eaves with exposed rafters. Extending across the facade is a gable end oriented front porch of brick.
Date: ca. 1920
1 contributing building
205. **119 Sixth Avenue**, residential

United States Department of the Interior
National Park Service

National Register of Historic Places
Continuation Sheet

Williamson Historic District
Mingo County, WV

Section Number 7 Page 35

- Description: 1½-story brick Bungalow with laterally-oriented gable roof and shed dormer beneath which is a recessed front porch supported by brick piers. Fenestration is flat-topped with some six-over-one windows.
Date: ca. 1920
1 contributing building
206. **121 (?) Sixth Avenue**, residential
Description: 2-story vernacular residence of brick construction with gable end orientation to the street. Front porch has been partially glassed in. Fenestration is flat-topped with brick sills and soldier course lintels.
Date: ca. 1930
1 contributing building
207. **125 (?) Sixth Avenue**, residential
Description: The next house sits back at the back of a lot and is a 2-story vernacular residence with a gable roof and gable end orientation to the street. Exterior clad in asbestos shingles. Fenestration is flat-topped, one-over-one. 1-story gable roof porch on the facade supported by brick posts.
Date: ca. 1920
1 contributing building
208. **126 Sixth Avenue**, residential
Description: 2-story vernacular residence clad in stucco with three bay facade and the main entrance centered, shielded by a pedimented hood. Fenestration is flat-topped, with some windows in-filled. 1-story hexagonal bay window is on the left side and the garage penetrates the basement.
Date: ca. 1920
1 contributing building
209. **124 Sixth Avenue**, residential
Description: 2-story brick residence with pyramidal roof and centered gable on the facade; facade is two bays in width with the main entrance offset on the left side. 1-story hipped-roof porch extends across the facade, supported by battered wood posts.
Date: ca. 1920
1 contributing building
210. **120 (?) Sixth Avenue**, residential
Description: 2-story American Foursquare of brick with a pyramidal roof and a gable wall dormer centered on a two-bay facade. Fenestration is flat-topped with four-over-one windows with rock-faced stone sills and lintels. 1-story gable end oriented brick front porch is enclosed with multi-light sash installed either originally or early within the period of significance.
Date: ca. 1920
1 contributing building
211. **116 Sixth Avenue**, residential
Description: 2-story vernacular residence of brick with fenestration significantly altered and

United States Department of the Interior
National Park Service

National Register of Historic Places
Continuation Sheet

Williamson Historic District
Mingo County, WV

Section Number 7 Page 36

front porch enclosed with loss of integrity.

Date: ca. 1920

1 non-contributing building

212. **112 Sixth Avenue**, residential

Description: 2-story vernacular residence of brick with pyramidal roof and large centered gable on the facade with imbricated shingling in the pediment. Two bay facade with flat-topped windows and ornamental upper sash. Hipped-roof porch supported by replacement columns.

Date: ca. 1910

1 contributing building

213. **104 Sixth Avenue**, residential

Description: 2-story American Foursquare of orange brick construction with hipped-roof and broadly overhanging eaves with brackets and modillions. A broad hipped-roof dormer is centered on the facade. Fenestration is flat-topped with rock face sills and lintels and some three part windows, extending across the facade is an open porch supported by brick piers matching the body of the house. The porch extends across the facade and wraps around the right elevation.

Date: ca. 1910

1 contributing building

214. **42 (?) Sixth Avenue**, residential

Description: Second of side by side repetitive houses. This is an American Foursquare of buff-colored brick with hipped roof and hipped dormers fenestration is flat-topped. The original front porch has been enclosed.

Date: ca. 1930

1 contributing building

215. **40 Sixth Avenue**, residential

Description: One of two adjacent repetitive houses. This is an American Foursquare of buff-colored brick construction with hipped-roof and hipped dormer; fenestration flat-topped without notable ornament, set singly and in pairs. Extending across the facade is a brick porch.

Date: ca. 1930

1 contributing building

216. **38 Sixth Avenue**, residential

Description: 2-story vernacular residence finished in stucco with a forward projecting enclosed front porch on the facade beneath which is a garage. Fenestration is flat-topped without notable ornament.

Date: ca. 1920

1 contributing building

217. **36 Sixth Avenue**, residential

Description: 1-½- story L-shaped cottage of wood construction with ornamental wood trim in the pediments of the gables on the facade. Windows flat-topped with steel frame sash.

Date: ca. 1930

United States Department of the Interior
National Park Service

National Register of Historic Places
Continuation Sheet

Williamson Historic District
Mingo County, WV

Section Number 7 Page 37

1 contributing building

218. **32 Sixth Avenue**, residential
Description: 1-½- story Bungalow of wood construction with laterally-oriented gable roof and shed dormer on the facade. Shed roof porch extends across the facade supported by wood posts. Fenestration flat-topped without notable ornament. Brick foundation.
Date: ca. 1920
1 contributing building
219. **30 Sixth Avenue**, residential
Description: 2-story American Foursquare of yellow brick with hipped roof and hipped dormers and porch with sunroom on the right side; brick foundation with garage is in the basement
Date: ca. 1920
1 contributing building
220. **28 Sixth Avenue**, residential
Description: 2-story vernacular residence of wood construction finished in thin shiplap siding with flat-topped windows set singly and in groups, generally six-over-six. Yellow brick foundation. Small recessed porch on the left side.
Date: ca. 1930
1 contributing building
221. **704 Mingo Street**, residential
Description: 1-story cottage clad in asbestos shingles flat-topped windows lack of notable ornament.
Date: ca. 1950
1 contributing building
222. **702 Mingo Street**, residential
Description: 1-story cottage of wood construction built on a raised foundation of concrete block with hipped roof and little notable ornament.
Date: ca. 1950
1 contributing building
223. **22 Sixth Avenue**, residential
Description: 1½-story Bungalow of wood construction with the originally recessed front porch partially enclosed; laterally-oriented gable roof with shed dormer.
Date: ca. 1920
1 contributing building
224. **20 Sixth Avenue**, residential
Description: 2-story American Foursquare of wood construction with large forward projecting gable roof addition on the facade with loss of integrity.
Date: ca. 1920
1 non-contributing building

United States Department of the Interior
National Park Service

National Register of Historic Places
Continuation Sheet

Williamson Historic District
Mingo County, WV

Section Number 7 Page 38

225. **16 Sixth Avenue**, residential
Description: 2-story vernacular residence of wood construction with hipped-roof and projecting gable roof sections. Fenestration flat-topped with replacement sash 1-story verandah extends across the facade with replacement supports and balustrade
Date: ca. 1915
1 contributing building
226. **Sixth Avenue and Alderson Street (St. James A. M. E. Church)** religious
Description: vernacular red brick church building with round arched and flat-topped windows. Little notable ornament. Windows are of art glass and a cornerstone inscribed, "Rev. J. A. Gipson, 1914."
Date: 1914
1 contributing building
227. **109 Seventh Avenue**, residential
Description: 2-story former garage apartment which has been converted to complete residential use. First story is stuccoed and upper story is of wood construction with gable roof gable-end orientation to the street.
Date: ca. 1920
1 contributing building
228. **108 (?) Seventh Avenue**, residential
Description: 2-story L-shaped cottage of wood construction with intersecting gable roof and flat-topped fenestration and little other notable ornament.
Date: ca. 1950
1 contributing building
229. **104 Seventh Avenue**, residential
Description: Modern residence clad in T-111; built outside the period of significance.
Date: ca. 1960
1 non-contributing building
230. **36 West Seventh Avenue**, residential
Description: 2-story vernacular residence with gambrel roof and gable end orientation to the street set on a foundation of stone with flat-topped fenestration and a 1-story raised porch on the facade.
Date: ca. 1920
1 contributing building
231. **306 Oak Street**, residential
Description: 1½-story Queen Anne-style cottage of wood and brick construction with a rounded corner tower on the facade and a broad veranda, a portion of which is enclosed with windows. Irregular form and roof configuration. At the rear is a 2-story brick dependency with a garage on the first story and two bay configuration on the second story.
Date: ca. 1900
1 contributing building

United States Department of the Interior
National Park Service

National Register of Historic Places
Continuation Sheet

Williamson Historic District
Mingo County, WV

Section Number 7 Page 39

232. **210 Little Oak Street (Elven C. Smith House)**, residential
Description: 2-story red brick Neo-Classical Revival-style home, individually listed in the National Register
Date: 1938
1 previously-listed building
233. **W side, Academy Street**, residential
Description: 2-story vernacular residence of brick construction with gable roof and gable end orientation to the street. Adirondack-style bracing under the eaves. Fenestration flat-topped and shingled finished to pediment of gable on the facade. Front porch partially enclosed.
Date: ca. 1930
1 contributing building
234. **138 Oak Street (Presbyterian Academy Building)**, residential
Description: 2½ -story Neo-Classical Revival-inspired brick building with five bay facade and centered entry brick porch extends across the facade fenestration is flat-topped with six-over-six windows set singly and in groups. This was the former Presbyterian Academy which has been converted for residential use.
Date: ca. 1904
1 contributing building
235. **130 Oak Street**
Description: 2-story modern building built of wood construction outside the period of significance.
Date: c. 1970
1 non-contributing building
236. **side, 128 Oak Street**, residential dependency
Description: two car garage built to replace a house that was demolished. Built outside the period of significance.
Date: 1989
1 non-contributing building
237. **128 Oak Street**, residential
Description: 2-story vernacular residence gable roof gable end orientation to the street built on foundation of rusticated concrete block with a hipped-roof front porch and little other notable ornament.
Date: ca. 1920
1 contributing building
238. **701 Academy Street**, residential
Description: 1½-story Bungalow of wood construction laterally-oriented gable roof and Adirondack style bracing. Clad in non historic siding.
Date: ca. 1920
1 contributing building

United States Department of the Interior
National Park Service

National Register of Historic Places
Continuation Sheet

Williamson Historic District
Mingo County, WV

Section Number 7 Page 40

239. **135 (?) Oak Street**, residential
Description: 2-story garage apartment with first story of stone second story of wood construction steel frame windows.
Date: ca. 1930
1 contributing building
240. **145 Oak Street**, residential
Description: 2-story vernacular residence with stucco finish; laterally-oriented gable roof and major alterations outside the period of significance, with loss of integrity.
Date: ca. 1930
1 non-contributing building
241. **110 Oak Street**, residential
Description: 1½-story Arts-and-Crafts style house of buff-colored brick construction with laterally-oriented gable roof and two dormers penetrating the facade. An original forward-projecting section on the facade contains a sunroom.
Date: ca. 1920
1 contributing building
242. **108 Oak Street**, residential
Description: Garage apartment with the first story of stone and second story of frame, with major alterations and loss of integrity.
Date: ca. 1930
1 non-contributing building
243. **106 Oak Street**, residential
Description: 2-story vernacular cottage of wood construction with gable roof gable orientation to the street and significant alterations with loss of integrity.
Date: ca. 1920
1 non-contributing building
244. **102 Oak Street**, residential
Description: 2-story vernacular residence of wood construction finished in shiplap siding with laterally-oriented gable roof and scalloped rafter tails under the eaves. 1-story gable end oriented porch extends across the facade with plain wood posts and paneled bulkhead balustrade. Fenestration flat-topped with four-over-one-sash.
Date: ca. 1920
1 contributing building
245. **100 (?) Oak Street**, residential
Description: 2-story residence of wood construction with laterally-oriented gable roof and three bay facade with front porch extending across. Fenestration flat-topped partial returns of the cornice on the gable ends.
Date: ca. 1920
1 contributing building

United States Department of the Interior
National Park Service

National Register of Historic Places
Continuation Sheet

Williamson Historic District
Mingo County, WV

Section Number 7 Page 41

246. **36 Oak Street**, residential
Description: 2-story vernacular residence of wood construction with a laterally-oriented gable roof and partial returns of the cornice on the gable ends two bay facade with enclosed front porch. Fenestration flat-topped without notable ornament.
Date: ca. 1920
1 contributing building
247. **34 Oak Street**, residential
Description: 2-story vernacular residence of wood construction with a hipped-roof and gable end oriented front porch which has been enclosed.
Date: ca. 1920
1 contributing building
248. **32 Oak Street**, residential
Description: 2-story Colonial Revival residence of wood construction with a laterally-oriented gable roof and partial returns of the cornice on the gable ends. Paired gablets on the facade along with a hipped-roof front porch with a centered gable; porch has been enclosed with operable sash at an early time.
Date: ca. 1910
1 contributing building
249. **28 Oak Street**, residential
Description: 1-story hipped-roof cottage of wood construction with hipped-dormers and an open front porch extending across the facade. Fenestration flat-topped without notable ornament.
Date: 1924
1 contributing building
250. **26 Oak Street**, residential
Description: 2-story vernacular residence of wood construction clad in insul-brick with jerkin-head gable roof and Adirondack style bracing on the facade. Brick foundation and 1-story gable end oriented porch on the facade.
Date: ca. 1920
1 contributing building
251. **24 (?) Oak Street**, residential
Description: Large scale Colonial Revival residence of brick and frame construction with the first story of brick and the second story finished in stained wood shingles. Paired oriel windows on the facade and a centered pediment with Palladian window. First story incorporates a centered entryway with a transom sash some ornamental glass windows. Wrap-around veranda.
Date: ca. 1910
1 contributing building
252. **20 Oak Street**, residential
Description: 2-story vernacular residence of wood frame construction with hipped-roof and centered gablet on the facade gable end oriented front porch exterior finished in asphalt shingles.

United States Department of the Interior
National Park Service

National Register of Historic Places
Continuation Sheet

Williamson Historic District
Mingo County, WV

Section Number 7 Page 42

Date: ca. 1910

1 contributing building

253. **18 Oak Street**, residential

Description: 2-story vernacular residence of wood construction with a laterally-oriented gable roof and exterior finished in shiplap siding. A 1-story addition built within the period of significance is on the left elevation.

Date: ca. 1920

1 contributing building

254. **705 Park Street**, residential

Description: 2-story vernacular residence of wood construction with a hipped-roof and a centered gablet on the facade two bay facade with a gable roof front porch enclosed with operable sash within the period of significance.

Date: ca. 1920

1 contributing building

255. **W side Park Street, N of Oak Street**, residential

Description: 2-story American Foursquare of brick construction with a hipped-roof and gable dormers. Fenestration flat-topped with four-over-one sash. A 1-story porch extends across the facade.

Date: ca. 1920

1 contributing building

256. **23 Poplar Street**, residential

Description: 1-story residential building of wood construction with gable roof and gable end orientation to the street built on a foundation of rock-faced concrete block. In deteriorated condition with windows boarded up.

Date: ca. 1920

1 contributing building

257. **25 Poplar Street**, residential

Description: 1-story vernacular cottage of wood construction with pyramidal roof and 1-story porch. Fenestration flat-topped without notable ornament.

Date: ca. 1930

1 contributing building

258. **29 Poplar Street**, residential

Description: 1-story vernacular residence of wood construction built on a raised foundation with a gable roof and gable end orientation to the street and a gable roof porch.

Date: ca. 1920

1 contributing building

259. **30 (?) Poplar Street**, residential

Description: 2-story residence of masonry and wood construction with the first story finished in stone and red brick and the second story in wooden frame. Fenestration is flat-topped little

United States Department of the Interior
National Park Service

National Register of Historic Places
Continuation Sheet

Williamson Historic District
Mingo County, WV

Section Number 7 Page 43

notable ornament. Facade is L-shaped and a rounded bay is in the angle of the ell. The building sits atop a retaining wall with a garage inside and the name "Reed" and the date 1942 is inscribed in the garage wall.

Date: ca. 1942

1 contributing building

260. **25 (?) Oak Street, garage**

Description: four bay 1-story garage of buff brick construction with a flat roof and four hinged garage doors

Date: ca. 1930

1 contributing building

261. **35 Oak Street, residential**

Description: 2-story cottage of wood construction with laterally-oriented gable roof and shed dormer on the facade along with a gable roofed porch. Fenestration flat-topped windows three-over-one set singly and in groups

Date: ca. 1920

1 contributing building

262. **37 Oak Street, residential**

Description: 1-story brick cottage with gable roof and gable-end orientation to the street and a recessed entryway on the left side of the facade; little architectural ornament.

Date: ca. 1930

1 contributing building

263. **39 Oak Street, residential**

Description: 1-story cottage of wood construction with gable roof flat-topped fenestration and little architectural ornament.

Date: ca. 1930

1 contributing building

264. **108 Oak Street, residential**

Description: 2-story hipped-roof cottage with flat-topped fenestration and a shed roofed addition; little architectural ornament.

Date: ca. 1920

1 contributing building

265. **112 Oak Street, residential**

Description: 1-story vernacular residence of wood construction set on a foundation of rock-faced concrete block with flat-topped fenestration and little architectural detail.

Date: ca. 1950

1 contributing building

266. **corner Oak Street and Seventh Avenue, garage**

Description: 1-story brick and wood frame garage with a flat roof without notable architectural detail.

United States Department of the Interior
National Park Service

National Register of Historic Places
Continuation Sheet

Williamson Historic District
Mingo County, WV

Section Number 7 Page 44

Date: ca. 1920
1 contributing building

267. **613 Wallace Street**, residential
Description: 1-story modern ranch style house of frame built outside the period of significance.
Date: ca. 1970
1 non-contributing building
268. **619 Wallace Street**, residential
Description: 1-story vernacular cottage of wood construction with hipped-roof and partially enclosed front porch. Fenestration flat topped no notable ornament.
Date: ca. 1920
1 contributing building
269. **621 Wallace Street**, residential
Description: 2-story vernacular residence of wood construction with a hipped-roof and 2-story gabled roof porch on the facade. Building has been converted for use as a triplex apartment. Fenestration flat-topped including some historic two-over-two wood sash.
Date: ca. 1910
1 contributing building
270. **514 Pritchard Street**, residential
Description: 2-story American Foursquare of brick construction with pyramidal roof and hipped dormers asymmetrically arranged three bay facade with the main entrance offset on the left side. 1-story hipped-roof porch with brick piers and balustrade and paired Tuscan columns. Date: ca. 1920
1 contributing building
271. **510 (?) Pritchard Street**, residential
Description: Stylized Cape Cod-style house of brick construction with laterally-oriented corrugated metal roof penetrated by paired dormers. 1-story bay window on the left side of the facade and a porch with a metal awning is on the right side of the facade beneath which is a basement garage.
Date: ca. 1940
1 contributing building
272. **508 Pritchard Street**, residential
Description: One of three adjacent repetitive house types. 2-story vernacular residence of brick construction with a gable roof and gable-end orientation to the street two bay facade with the main entrance offset and porch of brick.
Date: ca. 1925
1 contributing building
273. **506 Pritchard Street**, residential
Description: One of three adjacent repetitive house types. 2-story vernacular residence of brick construction with a gable roof and gable-end orientation to the street two bay facade with the

United States Department of the Interior
National Park Service

National Register of Historic Places
Continuation Sheet

Williamson Historic District
Mingo County, WV

Section Number 7 Page 45

main entrance offset and porch of brick.

Date: ca. 1925

1 contributing building

274. **504 Pritchard Street**, residential

Description: One of three adjacent repetitive house types. 2-story vernacular residence of brick construction with a gable roof and gable-end orientation to the street two bay facade with the main entrance offset and porch of brick, enclosed with operable wood sash.

Date: ca. 1925

1 contributing building

275. **502 Pritchard Street**, residential

Description: 2-story vernacular residence of buff colored brick construction with gable roof and gable end orientation to the street and double gallery porch on the facade. The upper porch has been enclosed with wood siding, the lower porch enclosed with operable sash.

Date: ca. 1925

1 contributing building

276. **404 Pritchard Street**, residential

Description: 2-story vernacular residence of wood construction set on a brick foundation and capped with a gable- end oriented roof two bay facade and 1-story gable roof porch enclosed with operable sash.

Date: ca. 1920

1 contributing building

277. **406 Pritchard Street**, residential

Description: 2-story vernacular residence of wood construction with gable roof and gable end orientation to the street. Main entrance on the left side articulated by sidelights. Fenestration flat-topped, three-over-one. 1-story gable roofed porch supported by brick piers.

Date: ca. 1920

1 contributing building

278. **408 Pritchard Street**, residential

Description: 2-story vernacular residence of wood construction gable roof gable end orientation to the street being sided at the time of preparation of the nomination. 1-story gable roof porch.

Date: ca. 1920

1 contributing building

279. **410 Pritchard Street**, residential

Description: 1-story modular house built on a concrete block foundation outside the period of significance.

Date: ca. 1990

1 non-contributing building

280. **131 Fourth Avenue**, commercial

Description: 1-story brick office building with flat roof little notable ornament.

United States Department of the Interior
National Park Service

National Register of Historic Places
Continuation Sheet

Williamson Historic District
Mingo County, WV

Section Number 7 Page 47

1 contributing building

288. **105 West Fourth Avenue**, residential
Description: 1-story office/commercial building of brick with historic front somewhat modified flat roof; little architectural ornament.
Date: ca. 1940
1 contributing building
289. **101-103 West Fourth Avenue**, residential
Description: 2-story residence/office with first story of rock-faced concrete block property includes a small commercial building facing West Fourth Street. Fenestration flat-topped without notable ornament. Property is surrounded by a stone retaining wall.
Date: ca. 1910
1 contributing building
290. **79 West Fourth Avenue**, residential
Description: 2-story gabled ell of wood frame built on a foundation of brick with a standing-seam metal roof; fenestration flat-topped; small porch in the angle of the ell.
Date: ca. 1910
1 contributing building
291. **75 West Fourth Avenue**, residential
Description: 1-story gabled ell cottage converted for use as medical offices. Intersecting gable roof flat-topped windows porch in the angle of the ell.
Date: ca. 1910
1 contributing building
292. **67 West Fourth Avenue**, residential
Description: 2-story vernacular residence of wood construction with a hipped-roof and a 2-story porch on the facade, the second story of which is enclosed; the pediment of the gable on the facade has decorative wood shingling.
Date: ca. 1910
1 contributing building
293. **57 West Fourth Avenue**, residential
Description: 2-story commercial building of brick construction with a three bay facade and evidence of a porch having been removed although the overall commercial character is unimpeded. Fenestration is flat-topped with some multi-light sash retained.
Date: ca. 1920
1 contributing building
294. **55 (?) West Fourth Avenue**, garage
Description: 1-story garage with gable roof and gable end orientation to the street wood frame construction.
Date: ca. 1920
1 contributing building

United States Department of the Interior
National Park Service

National Register of Historic Places
Continuation Sheet

Williamson Historic District
Mingo County, WV

Section Number 7 Page 48

295. **41 (?) West Fourth Avenue**, residential
Description: 1-story modern modular home of wood construction built outside the period of significance
Date: ca. 1990
1 non-contributing building
296. **39 West Fourth Avenue**, residential
Description: 1-story wood frame cottage laterally-oriented gable roof of standing-seam metal with a small shed-roofed front porch; built on a foundation of tile block.
Date: ca. 1910
1 contributing building
297. **56 East Fourth Avenue (D. James Building)** commercial
Description: 2-story commercial building of brick construction with a six bay upper facade and storefront on the first floor; storefront has been altered cornice area of arcaded corbel table of brick building is dated 1915.
Date: 1915
1 contributing building
298. **68 West Fourth Avenue**, commercial
Description: 2-story commercial building of brick construction converted for office use gable roof gable end orientation to the street some corbeled brick work.
Date: ca. 1910
1 contributing building
299. **88 West Fourth Avenue**, commercial
Description: a modern masonry bank building with parking associated
Date: ca. 1990
1 non-contributing building
300. **N side, West Fourth Avenue at Dickinson Street**, commercial/restaurant
Description: 1-story modern commercial building of wood construction, built outside the period of significance.
Date: ca. 1960
1 non-contributing building
301. **N side West Fourth Avenue, W of Dickinson Street**, residential
Description: 2-story vernacular residence of wood construction with gable roof and gable-end orientation to the street.
Date: ca. 1910
1 contributing building
302. **110 West Fourth Avenue (Sacred Heart Church and School)**, religious
Description: 2-story church and attached religious educational building, stone faced with flat roof; church has religious art glass windows.
Date: 1949

United States Department of the Interior
National Park Service

National Register of Historic Places
Continuation Sheet

Williamson Historic District
Mingo County, WV

Section Number 7 Page 49

- 1 contributing building
303. **rear, 79 West Fourth Avenue**, dependency
Description: 1-story gable-end-oriented automobile garage.
Date: ca. 1920
1 contributing building
304. **rear, 105 West Fourth Avenue**, dependency
Description: 1-story garage/storage building of concrete block construction built outside the period of significance of the district.
Date: ca. 1990
1 non-contributing building
305. **rear, 123 West Fourth Avenue**, dependency
Description: Concrete block storage building.
Date: ca. 1950
1 contributing building
306. **rear, 131 West Fourth Avenue**, commercial
Description: 1-story automobile car wash built outside the period of significance.
Date: ca. 1970
1 non-contributing building
307. **508 Dickinson Street**, multi-family residential
Description: 2-story apartment building of brick construction with a gable roof, shingled pediment and double-gallery brick porch.
Date: ca. 1920
1 contributing building
308. **510 Dickinson Street**, residential
Description: 2-story Arts-and-Crafts style residence of brick construction with steeply pitched roof system and a 1-story bay window on the facade. Main door is round-arched with a round door with Medieval style hinges.
Date: ca. 1930
1 contributing building
309. **606 Dickinson Street**, residential
Description: 2-story American Foursquare of brick construction with a hipped-roof and hipped dormer; two-bay facade with the main entrance offset on the right side 1-story hipped-roof porch extends across the facade a 1-story automobile garage has been built within the period of significance on the right side and a 1-story more modern shed roof addition is on the left side.
Date: ca. 1920
1 contributing building
310. **702 Dickinson Street**, residential
Description: 2-story Dutch Colonial Revival-style residence with stuccoed finish and laterally-

United States Department of the Interior
National Park Service

National Register of Historic Places
Continuation Sheet

Williamson Historic District
Mingo County, WV

Section Number 7 Page 50

oriented gambrel roof with shed dormers front and rear; shed roof porch extends across the facade supported by brick piers and featuring a brick balustrade.

Date: ca. 1930

1 contributing building

311. **Dickinson Street at Seventh Avenue**, garage

Description: tile garage faced in brick, with gable roof and gable-end orientation to the street

Date: ca. 1920

1 contributing building

312. **Dickinson Street at Seventh Avenue**, garage apartment

Description: garage apartment with hipped-roof; stone foundation with flat-topped fenestration with rock-faced sills and lintels

Date: ca. 1910

1 contributing building

313. **Dickinson Street at Sixth Avenue**, residential

Description: 2-story Colonial Revival residence of stone construction with a shallow hipped roof and three bay facade with an entryway featuring a segmental arched fanlight. Fenestration is flat-topped without notable ornament; a raised front porch extends across the facade, accessed by a stone stairway

Date: ca. 1910

1 contributing building

314. **W side, Dickinson Street, between Fifth and Sixth Avenues (Virginia Apartment Building)**, multi-family residential

Description: 3-story Mediterranean Revival-style apartment building of brick with tile roof supported by Adirondack-style bracing; multi-stage porch system on the facade with access to the interior apartments. Two retail spaces are on the ground floor.

Date: 1927

1 contributing building

315. **W side, Dickinson Street**, garage

Description: 1-story garage with extended carport built of wood construction.

Date: ca. 1950

1 contributing building

316. **511 Harvey Street**, multi-family residential

Description: 3-story multi-family apartment building with fanciful profile; steeply pitched gable roof; projecting sections on the facade which include screened in loggias; main entrance is through a set of double doors centered on the facade; a garage is in the basement accessed by an overhead door opening on the Harvey Street elevation.

Date: ca. 1930

1 contributing building

317. **514 Harvey Street**, residential

United States Department of the Interior
National Park Service

National Register of Historic Places
Continuation Sheet

Williamson Historic District
Mingo County, WV

Section Number 7 Page 51

- Description: 2-story vernacular residence of wood construction with the first story finished in stucco and the second story in wood frame with a dormer on the roof.
Date: ca. 1920
1 contributing building
318. **512 Harvey Street**, residential
Description: 1-story hipped-roofed cottage with a centered gable on the facade along with a front porch and sunroom; porch is supported by turned posts.
Date: ca. 1910
1 contributing building
319. **30 East Fourth Avenue**, commercial
Description: 2-story commercial building of rock-faced concrete block construction; some portions are of tan concrete block and others are of red. 2-story porch on the facade storefront on the first floor has been altered; the second story porch is enclosed with metal frame windows.
Date: ca. 1910
1 contributing building
320. **108 East Fourth (Police and Fire Department)** governmental
Description: modern three-story building built outside the period of significance.
Date: 1991
1 non-contributing building
321. **107 East Fourth Avenue (N & W Passenger Depot)**, transportation-related
Description: 1-story hipped roof passenger depot of red brick laid in buttered joints with hipped roof penetrated by hipped dormers; broadly overhanging eaves with curvilinear brackets. Plaque on the building notes that the building was donated to the City of Williamson 1981 by Norfolk and Western Railroad.
Date: ca. 1900
1 contributing building
322. **109 East Fourth Avenue**, transportation-related
Description: 1-story utilitarian brick office building with a flat roof and little architectural ornament; always associated with the railroad and presently serving as the railroad's police department and signal maintenance office.
Date: ca. 1955
1 contributing building
323. **alley between Fourth and Fifth**, dependency
Description: 1-story gable-end-oriented garages, built outside the period of significance.
Date: ca. 1970
1 non-contributing building
324. **alley between Fourth and Fifth**, dependency
Description: 1-story gable-end-oriented garages, built outside the period of significance.
Date: ca. 1970

United States Department of the Interior
National Park Service

National Register of Historic Places
Continuation Sheet

Williamson Historic District
Mingo County, WV

Section Number 7 Page 52

1 non-contributing building

325. **alley between Fourth and Fifth**, residential
Description: 2-story vernacular residence of wood construction, set on a brick foundation, with a gable roof and gable-end orientation to the street
Date: ca. 1920
1 contributing building
326. **alley between Fourth and Fifth**, garage
Description: 1-story corrugated metal clad automobile garage with an attached carport.
Date: ca. 1920
1 contributing building
327. **alley between Fourth and Fifth**, garage
Description: 1-story gable end oriented concrete block garage with an attached carport
Date: ca. 1950
1 contributing building
328. **alley between Fourth and Fifth**
Description: 2-story dependency with a gambrel roof incorporating a garage on the first story and an apartment on the second.
Date: ca. 1920
1 contributing building
329. **alley between Fourth and Fifth**, residential
Description: 1-story cottage vernacular in character with intersecting gable roof, built on a foundation of brick with flat-topped fenestration
Date: ca. 1920
1 contributing building
330. **alley between Fourth and Fifth**, dependency
Description: 1-story gable-end-oriented garages of wood construction clad in asbestos shingles and then
Date: ca. 1930.
1 contributing building
331. **alley between Fourth and Fifth**, dependency
Description: 1-story gable-end-oriented garages of wood construction clad in asbestos shingles and then
Date: ca. 1930.
1 contributing building
332. **alley between Fourth and Fifth**, residential
Description: 2-story concrete block garage apartment building with a flat roof
Date: ca. 1940
1 contributing building

United States Department of the Interior
National Park Service

National Register of Historic Places
Continuation Sheet

Williamson Historic District
Mingo County, WV

Section Number 7 Page 53

333. **alley between Fourth and Fifth**, dependency
Description: three car 1-story concrete block garage
Date: ca. 1950
1 contributing building
334. **alley between Fifth and Sixth**, dependency
Description: 1-story concrete block garage with gable roof and gable-end orientation to the street
Date: ca. 1950
1 contributing building
335. **alley between Fifth and Sixth**, dependency
Description: 1-story concrete block garage built outside the period of significance
Date: ca. 1980
1 non-contributing building
336. **alley between Fifth and Sixth**, dependency
Description: 1-story garage of wood construction
Date: ca. 1920
1 contributing building
337. **alley between Fifth and Sixth**, dependency
Description: 1-story vernacular building built on a foundation of concrete block with weatherboard cladding and hipped roof
Date: ca. 1950
1 contributing building
338. **alley between Fifth and Sixth**, dependency
Description: 1-story rock-faced concrete block garage
Date: ca. 1950
1 contributing building
339. **alley between Fifth and Sixth**, residential
Description: 1-story vernacular residence of wood construction set on a foundation of brick and concrete block with hipped roof and flat-topped fenestration lacking any notable ornament
Date: ca. 1910
1 contributing building
340. **alley between Fifth and Sixth**, residential
Description: 2-story residential building of wood construction, built on a foundation of concrete block dating from outside the period of significance.
Date: ca. 1960
1 contributing building
341. **alley between Fifth and Sixth**
Description: 1-story residential building vernacular in character set on a concrete foundation with gable roof and gable-end orientation; windows flat-topped without notable ornament.

United States Department of the Interior
National Park Service

National Register of Historic Places
Continuation Sheet

Williamson Historic District
Mingo County, WV

Section Number 7-8 Page 54

Date: ca. 1950

342. **Brick streets**, transportation-related
Description: brick-paved streets found throughout the district, many of which were laid by Morgantown paving contractor Thoney Pietro in the early years of the twentieth century
Date: 1904 and after
1 contributing structure
343. **Retaining walls**, landscape feature
Description: a series of retaining walls of masonry construction, executed both in brick and stone, found throughout the district, which serve to hold back the front and side yards of properties erected on the district's many steep hillsides
Date: c.1892 and after
1 contributing structure

8. Significance

The Williamson Historic District meets National Register Criterion C for *architecture*, as a strong, locally-significant, and relatively dense concentration of primarily residential and institutional buildings built between c.1892 and the mid-1950s and including examples of many of the styles of design popular during the period of significance. The district reflects the growth and maturity of this West Virginia community in the wake of significant coal, timber, and associated railroad development beginning in the last decade of the nineteenth century and spanning the next half-century. The district retains integrity in all seven qualities defined in the National Register guidelines, exhibiting those physical qualities, associative values, design features, and specific aspects of construction which date from within its period of significance. The period of significance begins in 1892, the date which marks the establishment of the town of Williamson and the construction of the district's earliest buildings, and ends in 1956, corresponding to the National Register 50-year guideline and the date by which the last of the district's historic properties was constructed.

A dearth of written history exists for Williamson and Mingo County. However, this area of southwestern West Virginia is extremely rugged and mountainous and it is certain that little settlement by non-indigenous pioneers occurred prior to the mid-nineteenth century. The area that would become Williamson was originally part of Montgomery County, Virginia. In 1824 it became part of Logan County, named for the Native American chief of the Mingo tribe, one of several tribes to use the area as hunting and fishing grounds prior to about 1800.

United States Department of the Interior
National Park Service

National Register of Historic Places
Continuation Sheet

Williamson Historic District
Mingo County, WV

Section Number 8 Page 55

Williamson lies in the northwestern quadrant of the land grant conveyed to John Green by the Commonwealth of Virginia in 1795. In 1835, Green's heirs conveyed a 4,000-acre tract to Anthony Lawson; it is on this tract that Williamson stands. In 1858, the Lawson parcel was transferred to Benjamin Williamson. The first eight decades of the nineteenth century saw only sporadic development in Mingo County. The land whereon Williamson grew was little more than open fields as late as the early 1890s.

In 1888 a survey crew from the Norfolk and Western Railway appeared in the area, which still remained as undeveloped farm lands in the hands of the Williamson family. Wallace J. Williamson, a member of the original family who controlled significant real estate and timber interests in the region, formed a land company known as the Williamson Mining and Manufacturing Company. Recognizing that the site favored the development of a settlement, and spurred on by the future offered by the railroad, a speculative town was laid out that would intersect with the proposed N & W. In 1892 the community was established and was named for Wallace Williamson and his pioneer family; Wallace Street, within the Williamson Historic District, bears his name. Williamson sold off his new town lots at public auction, with prices ranging from as little as twenty-five dollars to as high as two-hundred and fifty dollars.

The N & W tracks reached the settlement in 1892 and continued westward into the coal fields of Pike County, Kentucky. J. B. Williamson was elected the first mayor of the fledgling community. In 1895, 423.5 acres of the western portion of Logan County were split off and became Mingo County, with both Williamson and Rockhouse vying for the position of county seat. An election was held and, even though Williamson contained fewer than twenty buildings and a population of about one hundred, it was chosen as the county seat of the new Mingo County.

As the region's coal reserves were mapped and the main line of the N & W was extended to Williamson, the community's initial burst of growth began. Williamson lies in the heart of what has been known as the "Billion-Dollar Coal Field," and the fortunes of the community would forever be tied to the fortunes of the railroad and mining industry. A wood depot (not extant) was erected in the middle of town and the first passenger train stopped here in 1892; by 1894 four trains stopped daily in the new town.

In 1901, coal mines began to be opened along the N & W route. The railroad needed a regional hub from which to control its growing operations, and Williamson was chosen. A 1969 commemorative

**United States Department of the Interior
National Park Service**

**National Register of Historic Places
Continuation Sheet**

**Williamson Historic District
Mingo County, WV**

Section Number 8 Page 56

publication related to the community's history noted, "the company began the construction of their yards here and has steadily increased them adding something every year until now Williamson has the largest yards between Portsmouth and Roanoke, even exceeding Bluefield."²

The first permanent school building was erected in 1900; prior to that time, classes had been held only haphazardly, at whatever site could be secured. In 1902 a new Court House was erected in the heart of the downtown section which by that time had developed along First, Second, and Third Avenues. The downtown lies southwest of and outside the nominated area. In 1905 the community shed its original identity as an unincorporated town and became chartered as a city. By 1907 the 1900 schoolhouse had become obsolete and it was replaced by a new 12-room building which also contained two assembly halls. Neither of these earliest schools is extant. In 1904 a private school was established in a building erected on Oak Street. Known as the Presbyterian Academy (Resource No. 234), the institution was short-lived, lasting only from 1904 until 1910; the building has been converted into a residence. The present-day high school (Resource No.40) is a non-contributing element in the Williamson Historic District.

During the early decades of the twentieth century, transportation depended on the railroad and the most rudimentary of road systems. 1908 saw the construction of a privately-financed bridge spanning the Tug Fork, linking Williamson to Pike County, Kentucky and the village of South Williamson. Rail service was provided by the N & W; passengers boarded trains at the depot on Fourth Avenue (Resource No. 321) which has since been converted for use as Williamson City Hall.

The ample stands of forest in the region assured that the earliest architecture in Williamson would be of wood construction. These buildings were modest in their scale and detail and many fell victim to a series of fires which ravaged the community; the most serious of these occurred in 1906 and destroyed more than twenty buildings. As Williamson re-built, masonry became the favored building material.

As the community grew, leaders recognized the need for paved streets to match the Williamson's growing prominence in the southwest West Virginia coal fields. Portions of Second through Fourth Streets were paved with brick in 1904, along with sections of Harvey, Pike, and Logan Streets. Much

²**Williamson, West Virginia: Black Diamond Jubilee 1894-1969 Historical Program-Booklet.**
Williamson: 1969, p. 5.

United States Department of the Interior
National Park Service

National Register of Historic Places
Continuation Sheet

Williamson Historic District
Mingo County, WV

Section Number 8 Page 57

of the paving of Williamson streets was the work of Thoney Pietro, an Italian immigrant paving contractor who settled in Morgantown, West Virginia in the 1890s (Fig. 5 and 6). His brick-paving work across West Virginia and beyond became the stuff of legend.³

The location of the N & W shops and roundhouse in Williamson contributed significantly to the economy of the community and the region as a whole. The town's most active building era is referred to as the "building boom of '27." In that year, 1927, nearly one billion dollars in construction occurred, including public buildings, the community hospital, apartment buildings, and private homes.

The railroad continued to spur the economy of the community well into the ensuing decades. In 1930, eighteen trains passed through Williamson daily. Six of these offered service eastward to Norfolk and westward to Cincinnati. Locals served coal camps and small towns with picturesque names such as Pond Creek, Thacker, Kermit, Matewan, and Chatteroy.

The institutional growth and maturity of Williamson are represented in the Williamson Historic District by several religious and secular institutional properties. Among the religious properties in the district are the First Baptist, the St. James AME, the First Presbyterian, Sacred Heart Roman Catholic, the Church of Christ, and the Synagogue of the Congregation B'Nai Israel. The city's fraternal life is represented by two lodge halls, one on Alderson Street (Resource No. 78) and the 3-story Masonic Lodge of 1930 (Resource No. 61). In 1927, during the aforementioned "building boom," Drs. George Conley and Russell Salton built the Williamson Memorial Hospital (resource No. 14) atop "College Hill" at the northeast corner of the Williamson Historic District. A French-Second Empire-influenced nurses' home (Resource No. 13) is immediately adjacent. The local high school (Resource No. 40) is a non-contributing feature in the district due to its age, but educational history in Williamson is represented in the district by the Presbyterian Academy (Resource No. 234) at 138 Oak Street.

Throughout the balance of the period of significance, Williamson remained inextricably tied to coal and to the railroad, as it had been from its earliest days. When the mines were active, Williamson grew and prospered and vice versa. Population statistics indicate a municipal population only 688 in 1900. By the 1920s, Williamson had grown into one of the major economic and industrial centers in

³David L. Taylor, "Survey and Historic Context Report: The Life, Work, and Legacy of Master Builder Thoney Pietro, Morgantown, West Virginia," 2002 on file at the West Virginia State Historic Preservation Office.

**United States Department of the Interior
National Park Service**

**National Register of Historic Places
Continuation Sheet**

**Williamson Historic District
Mingo County, WV**

Section Number 8 Page 58

the southern West Virginia coal fields, reflected in the 1920 population of 6,819, which swelled to 9,410 in 1930. However, stagnation of the regional economy over the decades resulted in a significant decline in Williamson's population, which was recorded at 3,414 in 2000.

The Williamson Historic District's Criterion C significance for *architecture* is established by the presence in the district of a strong and cohesive concentration of architecture, primarily residential, which mirrors sixty-five years of development in Williamson and reflects many of the popular styles of design in vogue throughout the period of significance of the district. Included among these styles are the Queen Anne, and Romanesque, Gothic and Late Gothic, Neo-Classical, and Colonial Revival, Bungalow, American Foursquare, Cape Cod, and Ranch styles, along with numerous vernacular derivations of many of the styles and other properties reflecting no particular architectural style but nonetheless reflecting local building traditions within the community. Specific examples of representative styles appear in Section 7.

In addition to its reflection of the community's domestic architectural legacy, the institutional growth and maturity of the community is seen in several substantial religious buildings, two fraternal buildings, a former hospital and its associated nursing building, and an early-twentieth-century private academy building. Williamson's close link to the N & W Railroad is manifest in the former depot, which now serves as City Hall.

Examining the Williamson Historic District in the context of other similar resources, several comparisons can be made. The Fleming-Watson Historic District (NR 2001) in Fairmont, dates from generally the same period as does the Williamson Historic District, and, historically, also owes its existence to the development of the West Virginia coal fields. The architecture of the 85-acre Fleming-Watson district is similarly scaled to that of the Williamson Historic District but is somewhat larger in area, containing more than 400 buildings. Further, the Fleming-Watson Historic District is anchored by the mammoth "High Gate;" Williamson can claim no such monumental domestic architecture. Other residential districts in the region, including Charleston's East End Historic District (NR 1978) and Edgewood Historic District (NR 1989), are of a far more urban residential character than is the Williamson district, which retains its rural small-town county seat character and ambiance. The Downtown Weston Residential Historic District, located considerably north of Williamson, immediately abuts a downtown commercial historic district which also includes the county court house. Morgantown's South Park Historic District is a large, upper middle class residential district and the Greenmont Historic District, also in Morgantown is more of an ethnically and racially diverse district

**United States Department of the Interior
National Park Service**

**National Register of Historic Places
Continuation Sheet**

**Williamson Historic District
Mingo County, WV**

Section Number 8 Page 59

that is the Williamson district.

Unlike this district, many of the other listed districts in the region are primarily commercial in character, accounting for an entirely different appearance, scale, density, and architectural character. The Weston Downtown Historic District (NR 1978), is one such district, as are the Clarksburg Historic District (NR 1982) and the Salem Historic District (NR 1980), both north of Charleston and well north of Williamson. The Salem district is a generally linear 14.8-acre district and reflects construction in the downtown following a 1901 fire. The Downtown Morgantown Historic District (NR 1996) is a commercial district as well.

In nearby Kentucky, the several districts in Pikeville, the county seat of Pike County which lies immediately west of Williamson, are of a somewhat more substantial scale than is the Williamson district. The Stone Historic District, also in Pike County, consists of a coal camp with three substantial coal company buildings and a series of one- and two-story company houses formerly owned by auto magnate Henry Ford.

Summarizing, the Williamson Historic District is distinctive as a cohesive and strong concentration of locally-significant, primarily domestic architecture dating from the last years of the nineteenth century through the first half-century of the twentieth and meets the National Register Criteria for Evaluation under Criterion C for its architectural significance.

United States Department of the Interior
National Park Service

National Register of Historic Places
Continuation Sheet

Williamson Historic District
Mingo County, WV

Section Number 9 Page 60

9. Major Bibliographical References

BIBLIOGRAPHY

- Carlin, John E. and Rowe, Alan R. *Elven Smith House* [National Register of Historic Places nomination].
Charleston: West Virginia Division of Culture and History, 2002.
- Mingo County Land Records, Mingo County Court House, Williamson, West Virginia.
- Rogers, Sam. *A History of Logan County, West Virginia*. Morgantown: West Virginia University
Extension, 2002.
- Smith, Nancy Sue. *An Early History of Mingo County, West Virginia*. Williamson: Williamson Publishing,
1960.
- _____. *History of Logan and Mingo Counties, Beginning in 1617. West Virginia*. n. p., 1960
- Taylor, David L. "Survey and Historic Context Report:: The Life, Work, and Legacy of Master Builder
Thoney Pietro, Morgantown, West Virginia," 2002 on file at the West Virginia State Historic
Preservation Office.
- Williamson, West Virginia: Black Diamond Jubilee 1894-1969 Historical Program-Booklet.**
Williamson: 1969.

**United States Department of the Interior
National Park Service**

**National Register of Historic Places
Continuation Sheet**

**Williamson Historic District
Mingo County, WV**

Section Number 10 Page 62

place of beginning.

BOUNDARY JUSTIFICATION

These boundaries encompass the historic neighborhood, primarily residential in character, which lies north of the N & W Railroad and was among the first residential areas to be developed in Williamson after the community was founded in the early 1890s. The boundaries are drawn to exclude as many non-contributing buildings as possible, including a multi-story apartment building on Fourth Avenue.

**United States Department of the Interior
National Park Service**

**National Register of Historic Places
Continuation Sheet**

**Williamson Historic District
Mingo County, WV**

Section Number Photo Log Page 63

PHOTOGRAPH LOG

All Photographs:

Williamson Historic District

Mingo County, West Virginia

Photographer: David L. Taylor

Date: 2005

Negatives filed at: West Virginia SHPO
 Charleston, West Virginia

1. City Hall, the former N & W Depot (Resource No. 321), Fourth Street, looking southeast
2. Masonic Lodge Building (Resource No. 61), Logan Street, looking northeast
3. Streetscape, Pike Street at Logan Street, looking southeast, with 510 Logan Street (Resource No. 71) in foreground.
4. Commercial buildings, 600 block of Alderson Street, with 610 Alderson Street (Resource No. 77) in the foreground
5. Lodge Hall on Alderson Street (Resource No. 78), between Joseph and Fourth Streets, looking northeast
6. Row houses, at 5, 7, 9, and 11 Sixth Avenue (Resource No. 194), looking southwest
7. Colonial Revival apartment building (Resource No. 50), Joseph Street, facade, looking south
8. Streetscape, Sixth Street, looking southwest from Wallace Street; Presbyterian Church (Resource No. 200) is at left
9. Presbyterian Church (Resource No. 200), northeast perspective looking southwest
10. American Foursquares at 37 and 39 Sixth Street (Resource Nos. 202 and 203, respectively), looking southwest

United States Department of the Interior
National Park Service

National Register of Historic Places
Continuation Sheet

Williamson Historic District
Mingo County, WV

Section Number Photo Log Page 64


11. Sam Thabut stone house (Resource 313) and adjacent Virginia Apartment Building (Resource No. 314), Dickinson and Fifth Streets, looking southwest
12. Presbyterian Academy building (Resource No. 234), facade, looking north
13. Streetscape, Pritchard Street looking south from Oak Street, with 514 Pritchard Street (Resource No. 270) in the foreground
14. Streetscape, Fifth Avenue, looking east from Pritchard Street toward Pike Street
15. Streetscape Dickinson Street, looking south from Oak Street
16. Streetscape Oak Street, looking west from Wallace Street, with 24 (?) Oak Street (Resource No.251) in foreground, showing stone retaining walls
17. Apartment building, 511 Harvey Street (Resource No. 316), looking west
18. Williamson Cemetery, looking east
19. Streetscape, Maple Walk, looking south, showing Resource Nos. 105 and 106, typical of the large-scale homes on east side of Maple Walk
20. Streetscape, Maple Walk, looking south with 543 Maple Walk (Resource No. 111) in foreground, showing small-scale homes on west side of Maple Walk
21. former Williamson Memorial Hospital, Mulberry Street, looking west
22. former nurses' home, Mulberry Street, looking northwest

WILLIAMSON HISTORIC DISTRICT
 Williamson, Mingo County, West Virginia

Prepared by
TAYLOR & TAYLOR ASSOCIATES, INC.
 Historic Preservation & Community Development Specialists
 9 Walnut Street
 Brookville, PA 15825
 814-849-4900
 August, 2006

DISTRICT MAP (PHOTOGRAPHY)

Legend:

District Boundary: 

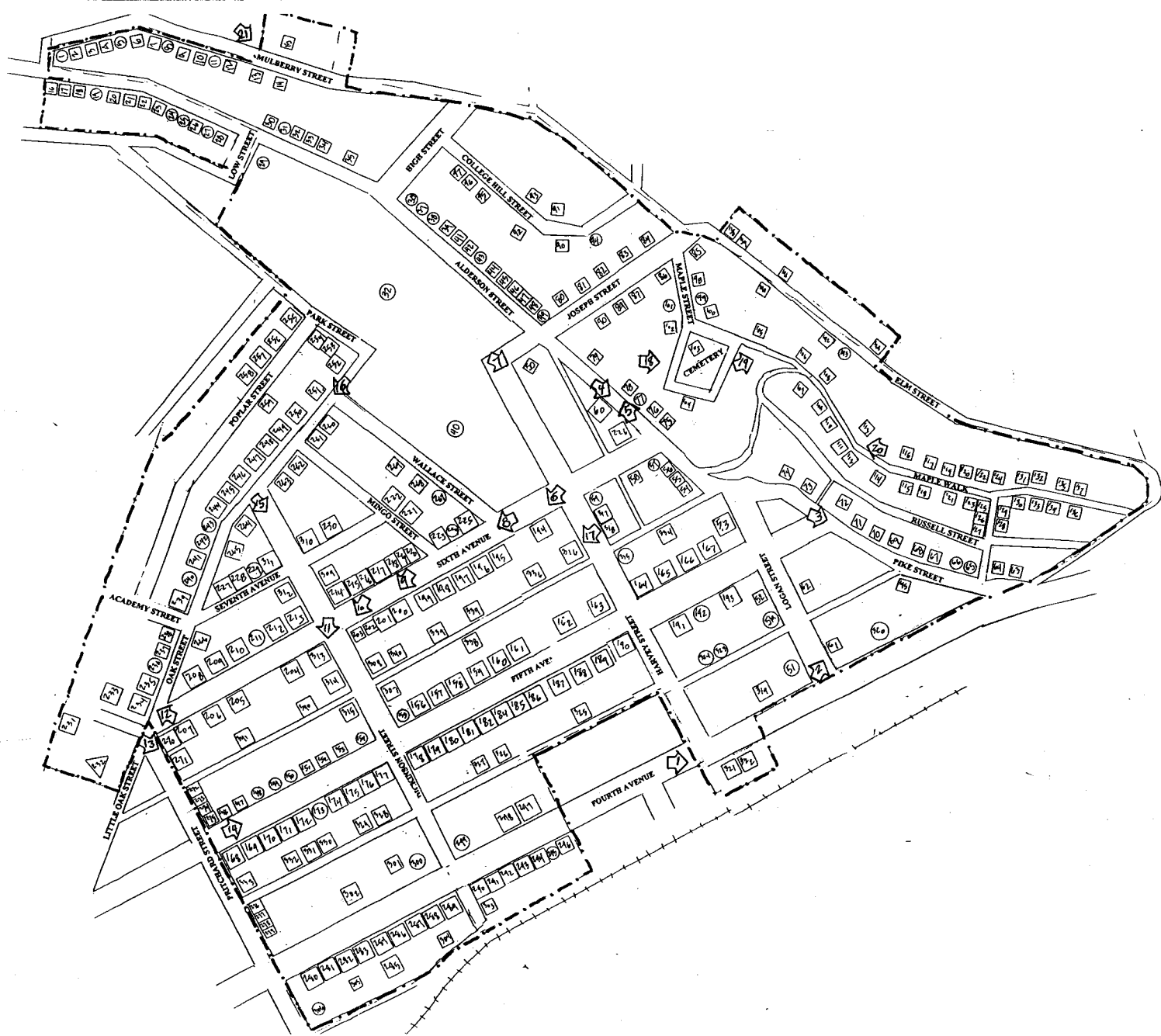
Contributing Resources 

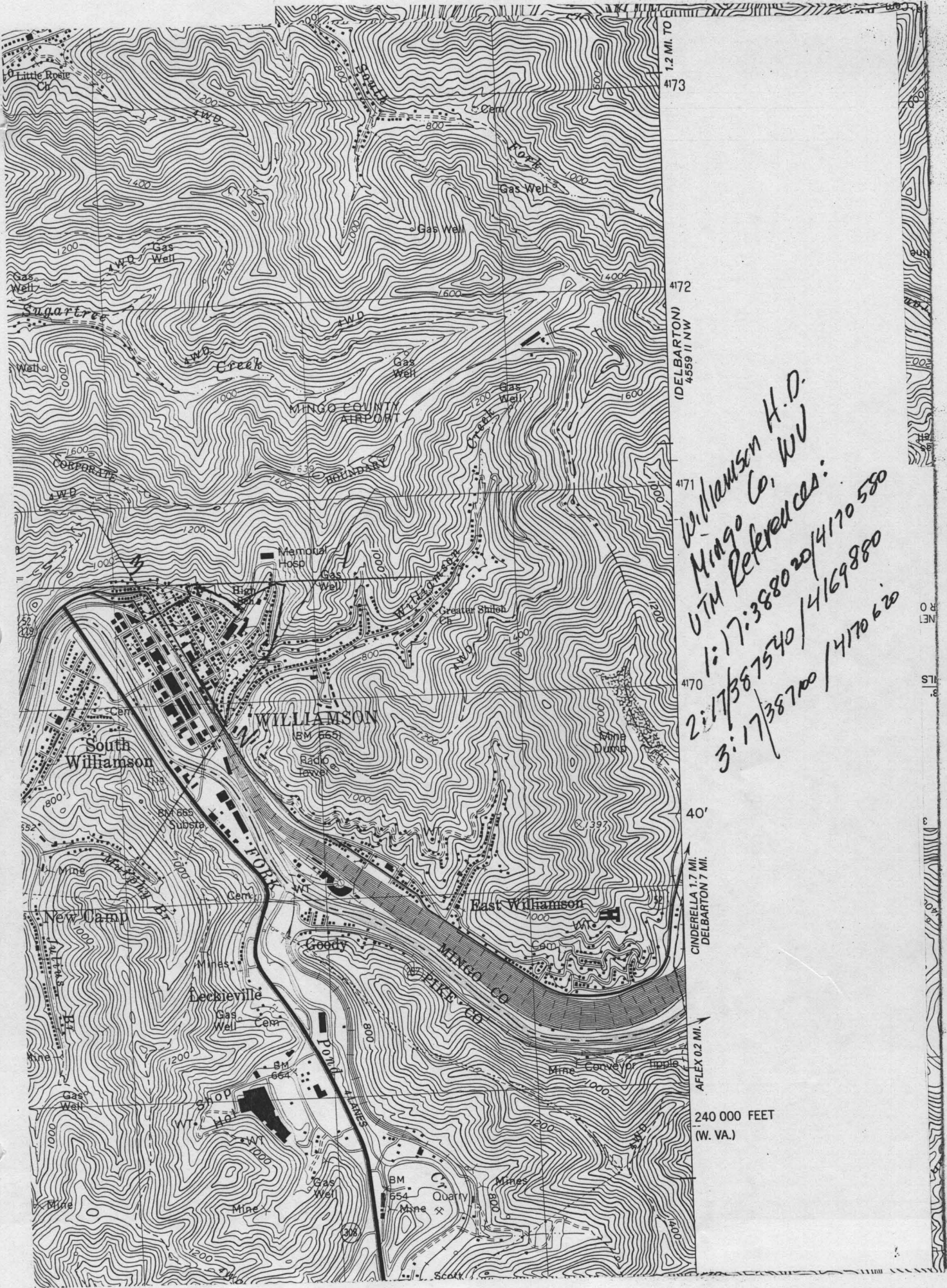
Non-Contributing Resources 

Previously-Listed Resource 

Photo Number & Camera Orientation 

Numbers correspond to the Resource Inventory which was prepared in conjunction with the National Register documents. All resources are contributing unless their numbers are circled, indicating that they are non-contributing features within the context of the district.





1.2 MI. TO
4173

4172

4171

4170

40'

CINDERELLA 1.7 MI.
DELBARTON 7 MI.

AFLEX 0.2 MI.

240 000 FEET
(W. VA.)




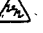
(DELBARTON)
4559 II NW

*Williamson H.O.
Mingo Co, WV
UTM References:
1: 17:388020/4170580
2: 17/387540/4169880
3: 17/387100/4170620*

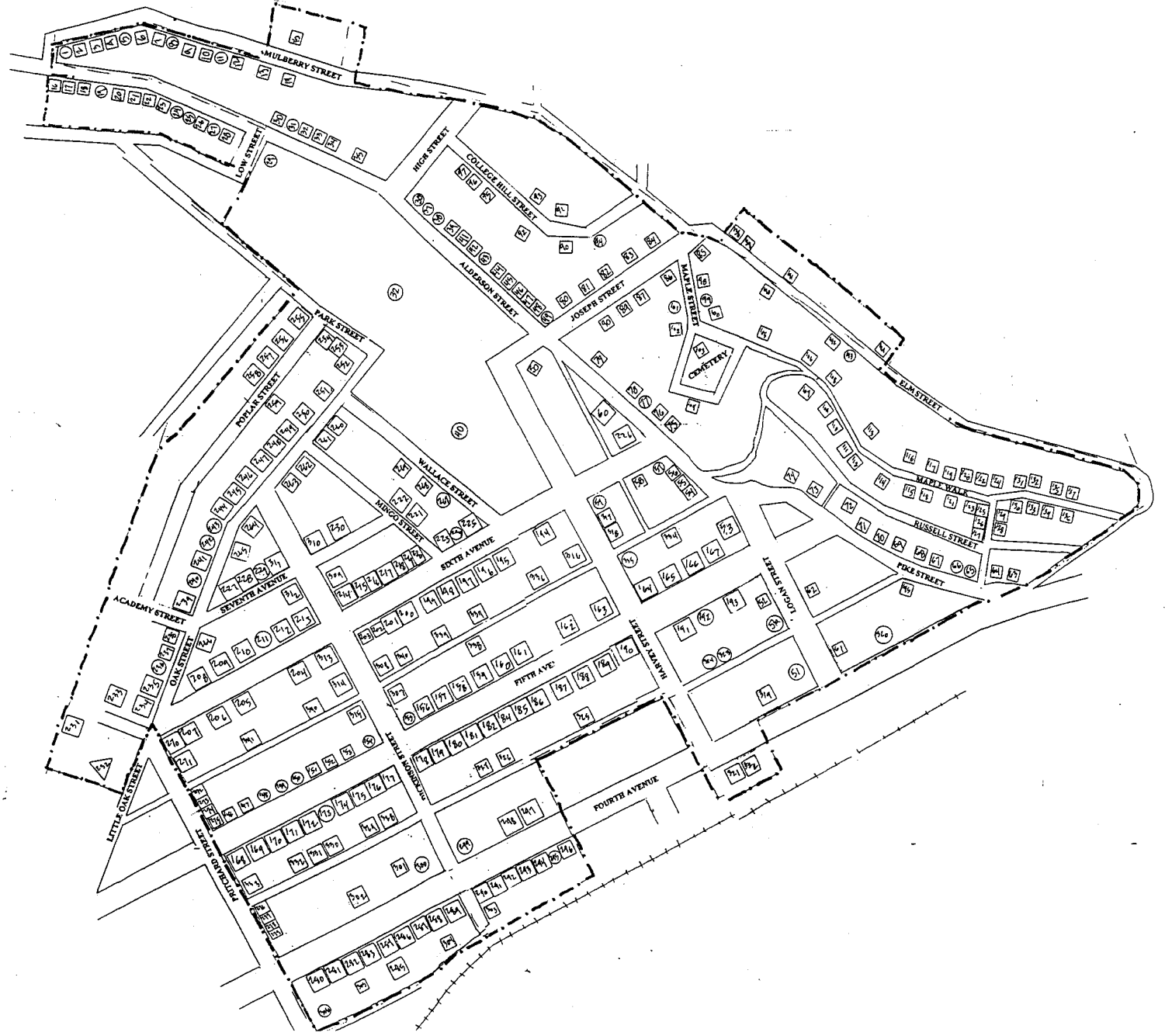
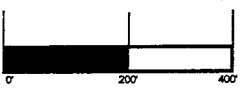
WILLIAMSON HISTORIC DISTRICT
 Williamson, Mingo County, West Virginia

Prepared by
TAYLOR & TAYLOR ASSOCIATES, INC.
 Historic Preservation & Community Development Specialists
 9 Walnut Street
 Brookville, PA 15825
 814-849-4900
 August, 2006

DISTRICT MAP

- Legend:
- District Boundary: 
 - Contributing Resources 
 - Non-Contributing Resources 
 - Previously-Listed Resource 

Numbers correspond to the Resource Inventory which was prepared in conjunction with the National Register documents. All resources are contributing unless their numbers are circled, indicating that they are non-contributing features within the context of the district.




WILLIAMSON HISTORIC DISTRICT
Williamson, Mingo County, West Virginia

Prepared by
TAYLOR & TAYLOR ASSOCIATES, INC.
Historic Preservation & Community Development Specialists
9 Walnut Street
Brookville, PA 15825
814-849-4900
August, 2006

DISTRICT MAP (PHOTOGRAPHY)

Legend:

District Boundary: 

Contributing Resources 

Non-Contributing Resources 


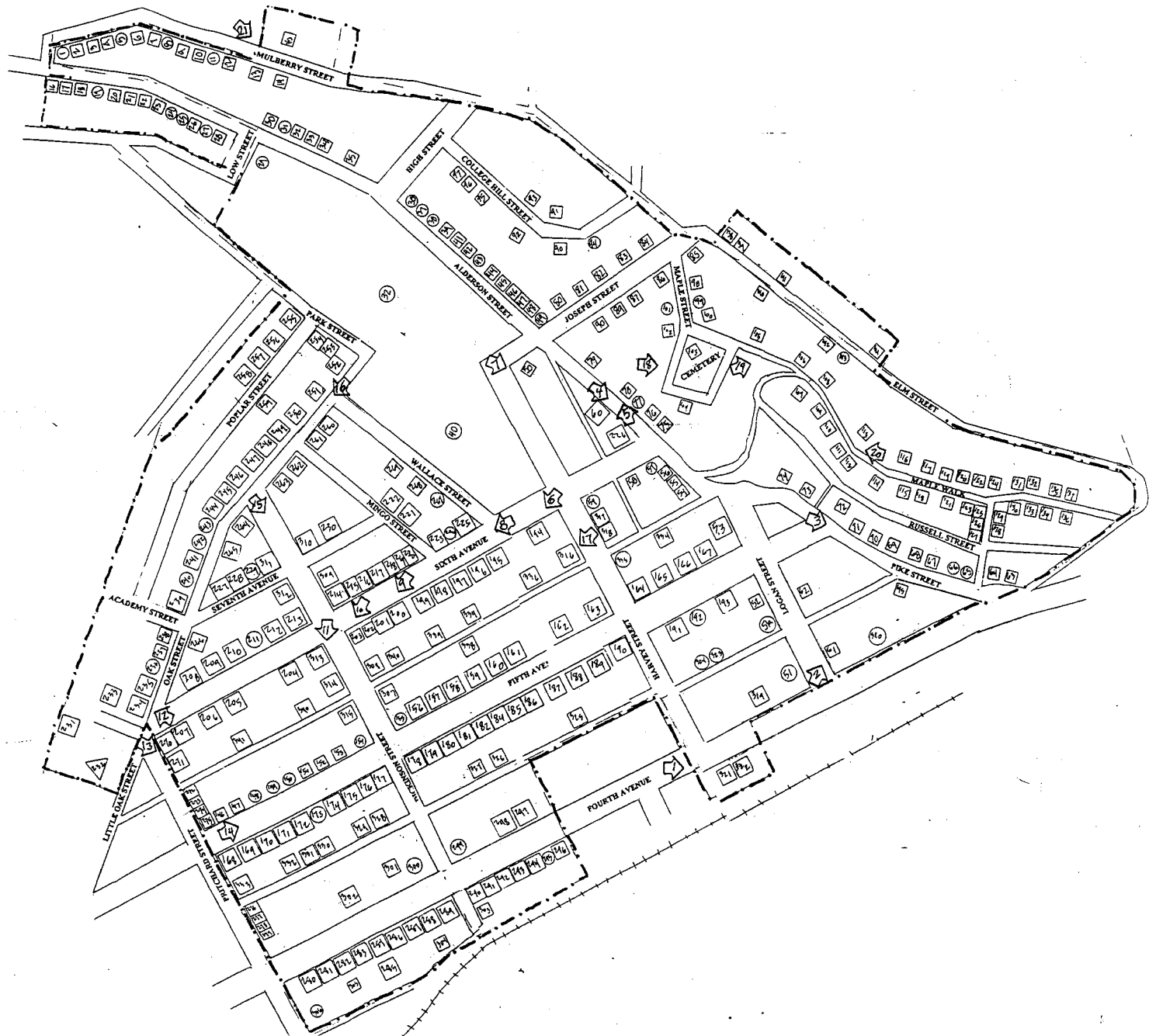
Previously-Listed Resource 

Photo Number & Camera Orientation 

Numbers correspond to the Resource Inventory which was prepared in conjunction with the National Register documents. All resources are contributing unless their numbers are encircled, indicating that they are non-contributing features within the context of the district.





WILLIAMSON H.D., Mingo Co, WV ①



WILLIAMSON H.D., MINGO CO. WV ②



WILLIAMSON H.D., MINGO CO. WV (3)



WILLIAMSON, H.D., MINGO CO. WV (4)



WILLIAMSON H. D., MINGO CO. WV ⑤



WILLIAMSON H.D., MINGO CO. WV (6)



WILLIAMSON H.D., MINGO CO. WV (7)



WILLIAMSON H.D., MINGO CO., WV (8)



WILLIAMSON H.D., MINGO CO. WV (9)



WILLIAMSON H.D., MINGO CO. W.V (10)



WILLIAMSON H.D., MINGO CO. WY (11)



WILLIAMSON H.D., Mingo Co. WV (12)



WILLIAMSON H.D., MINGO CO. WV (13)



WILLIAMSON H.D., MINGO Co. WV (14)



WILLIAMSON H.D., MINGO CO. WY (15)



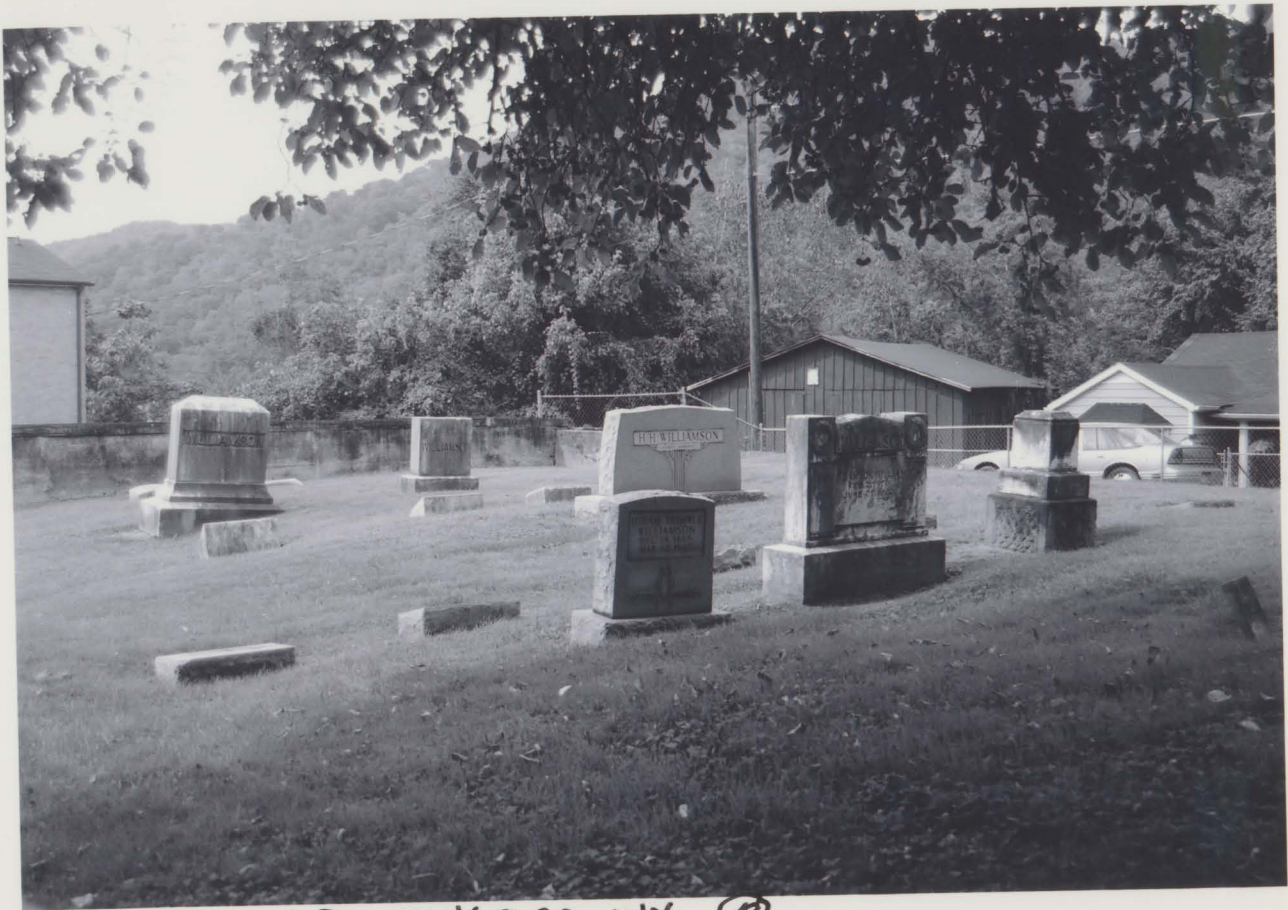
WILLIAMSON H.D., MINGO Co. WV

⑥

WILLIAMSON H. D. J. MINGO CO. WV

17





WILLIAMSON H.D., MINGO CO. WY (B)



WILLIAMSON H.D., MINGO CO. WV (19)



WILLIAMSON H.D., MINGO CO. WV (20)



WILLIAMSON H.D., MINGO CO. WV (21)



WILLIAMSON H.D., MINGO CO. WV (22)