

United States Department of the Interior  
National Park Service

For NPS use only

National Register of Historic Places  
Inventory—Nomination Form

received

date entered

See instructions in *How to Complete National Register Forms*  
Type all entries—complete applicable sections

## 1. Name

historic

and or common Moorefield Historic District

## 2. Location

street &amp; number Portions of Main, Elm, Washington &amp; Winchester Sts. not for publication

city, town Moorefield vicinity of

state West Virginia code county Hardy code

## 3. Classification

Category	Ownership	Status	Present Use
<input checked="" type="checkbox"/> district	<input type="checkbox"/> public	<input checked="" type="checkbox"/> occupied	<input type="checkbox"/> agriculture
<input type="checkbox"/> building(s)	<input type="checkbox"/> private	<input type="checkbox"/> unoccupied	<input checked="" type="checkbox"/> commercial
<input type="checkbox"/> structure	<input checked="" type="checkbox"/> both	<input type="checkbox"/> work in progress	<input type="checkbox"/> educational
<input type="checkbox"/> site	<b>Public Acquisition</b>	<b>Accessible</b>	<input type="checkbox"/> entertainment
<input type="checkbox"/> object	<input type="checkbox"/> in process	<input checked="" type="checkbox"/> yes: restricted	<input checked="" type="checkbox"/> government
	<input type="checkbox"/> being considered	<input type="checkbox"/> yes: unrestricted	<input type="checkbox"/> industrial
		<input type="checkbox"/> no	<input type="checkbox"/> military
			<input type="checkbox"/> museum
			<input type="checkbox"/> park
			<input checked="" type="checkbox"/> private residence
			<input checked="" type="checkbox"/> religious
			<input type="checkbox"/> scientific
			<input type="checkbox"/> transportation
			<input type="checkbox"/> other:

## 4. Owner of Property

name Multiple Owners

street &amp; number

city, town vicinity of state

## 5. Location of Legal Description

courthouse, registry of deeds, etc. Hardy County Courthouse

street &amp; number Elm and Washington Streets

city, town Moorefield state West Virginia

## 6. Representation in Existing Surveys

title Moorefield Historic Sites Survey has this property been determined eligible? yes ☒ no

date 1982 federal state county local

depository for survey records West Virginia Department of Culture and History

city, town Charleston state West Virginia

## 7. Description

### Condition

☒ excellent  
☐ good  
☐ fair

☐ deteriorated  
☐ ruins  
☐ unexposed

### Check one

☐ unaltered  
☒ altered

### Check one

☒ original site  
☐ moved      date \_\_\_\_\_

Describe the present and original (if known) physical appearance

### Summary Description

The Moorefield Historic District includes principally North and South Main Street, Elm, which parallels Main, and Washington and Winchester which run perpendicular to it. Within this site lies the original town as it was platted in 1777 plus areas of early expansion. Today, the district consists of a mix of commercial, residential and civic structures, ranging in age from the mid 18th century to the early 20th century. The commercial buildings are concentrated in a two block length of Main Street between Washington Street and Town Run Road. The civic buildings, (Hardy County Court House and City Hall) are located east of Elm Street. Generally the buildings are two story structures with log, stone, brick or frame construction. Log, stone and brick were used for the oldest buildings with brick or balloon framing favored in the late 19th and early 20th century. Predominate residential styles are Greek Revival and Queen Anne with earlier buildings displaying traditional vernacular features and Georgian influence. The commercial buildings are Italianate style, turn-of-the-century commercial vernacular or have various neo classical motifs. The buildings are in generally good condition and are well maintained. The district contains 223 buildings of which 49 or approximately 22% are considered to be non-contributing. The non-contributing elements are scattered throughout the district.

### Additional Information

When it was laid out in 1777, the original town of Moorefield covered a triangular area with its base formed by the rear property lines of the lots facing onto Main Street from Allegany Street south to a point north of Town Run Road. The triangle extended east to a place on South Fork Road east of Clay Street. The north edge of the old town was formed by an 18th century road which was referred to as "Old Moorefield Road." Today, remnants of this road can be seen in Allegany Street and South Fork Road. The former course of this road is also suggested by some of the rear property line of lots facing onto Winchester and Washington Streets. Not surprisingly, most of the oldest buildings in the district are located within this triangular area.

The character of the district changes slightly towards its south end, below the intersection with Town Run Road. The south section is dominated by the South Fork of the South Branch of the Potomac, which bisects it, and the Bean Mill which was a major industrial influence in the late 19th and early 20th centuries.

Following is an inventory of the buildings in the Moorefield Historic District. The buildings are described briefly and characterized as contributing, non-contributing or Key (outstanding) elements within the district. Several buildings are already individually listed in the National Register.



United States Department of the Interior  
National Park Service

**National Register of Historic Places  
Inventory—Nomination Form**

For NPS use only

received

date entered

Continuation sheet

Item number 7

Page 2

INVENTORY OF BUILDINGS

Note: Buildings marked with two asterisks (\*\*) are individually listed in the National Register of Historic Places.

1. 305. North Main Street.  
Two story, three bay frame house with L extension to the rear, central entrance and hip roofed porch across front. Ca. 1900. Contributing.
2. 303 North Main Street.  
Two story, L-shaped frame house sheathed with aluminum siding. Ca. 1900. Contributing.
3. 301 North Main Street.  
Two story, three bay frame four square house with wrap around porch. Ca. 1910. Contributing.
4. 300 North Main Street.  
Two story, three bay frame house with hipped roof. Follows the four square style with Colonial Revival features. Notable is the exterior siding of wood, cut and sand covered to resemble masonry blocks. 1907. Key building.
5. 230 North Main Street.  
Two story, three bay frame house with gable roof and semi-hexagonal projecting bay. Covered with narrow gauge siding. Ca. 1900. Contributing.
6. 228 North Main Street.  
Two story, five bay frame house with projecting gables at each end. Covered with narrow gauge siding. The building reflects the late Queen Anne style. Ca. 1900. Contributing.
7. 224 North Main Street.  
Two story, three bay frame house with central projecting gabled pavilion. Notable feature is front porch with elaborate frieze and balustrade. Included on the property are small frame outbuildings. Ca. 1900. Contributing.
8. 222 North Main Street.  
One story, two bay frame commercial building with gable front. Ca. 1900. Contributing.
9. 216 North Main Street. Rosedale.  
Two story, three bay L-shaped brick house with Italian Villa style characteristics. Ca. 1850. Contributing.

United States Department of the Interior  
National Park Service

**National Register of Historic Places  
Inventory—Nomination Form**

For NPS use only

received

date entered

Continuation sheet

Item number 7

Page 3

10. 212 North Main Street. J & M Service.  
One story frame service station with projecting hip roofed overhang. Ca. 1925. Contributing.

11. 208 North Main Street.  
Two story, three bay brick Greek Revival style building with a low pitched gable roof and inside end chimneys. It has an elaborate one story porch with cast iron balustrade, supported by Ionic columns. Ca. 1850. Contributing.

12. 204 North Main Street.  
Two story, three bay L-shaped frame house in the late Queen Anne style. The front facing projecting gable has decorative shingle work. Ca. 1900. Contributing.

13. 231 North Main Street.  
Modern building. Non-contributing.

14. 227 North Main Street.  
Modern building. Non-contributing.

15. American Legion.  
Modern building. Non-contributing.

16. Post Office.  
Modern building. Non-contributing.

17. 217 North Main Street.  
Two story, gable front T-shaped house. Covered with aluminum siding. Ca. 1920. Contributing.

18. 215 North Main Street.  
Two story, gable front T-shaped frame house. Ca. 1920. Contributing.

19. 211 North Main Street.  
Two story frame house with late Queen Anne influence. Covered with narrow gauge siding. Ca. 1910. Contributing.

20. 207 North Main Street.  
Two story frame house with hipped roof, similar to #19. Late Queen Anne styling. Ca. 1910. Contributing.

21. 201 North Main Street. Moose Lodge.  
Modern building. Non-contributing.

United States Department of the Interior  
National Park Service

**National Register of Historic Places  
Inventory—Nomination Form**

For NPS use only

received

date entered

Continuation sheet

Item number 7

Page 4

22. 142 North Main Street.  
Two story, three bay house covered with aluminum siding. Central entrance.  
Ca. 1880. Contributing.
23. 140 North Main Street. Halterman Aluminum Products.  
Two story, four bay frame L-shaped house with gable projecting to the front.  
Ca. 1910. Contributing.
24. 136 North Main Street.  
Two story frame Queen Anne style house with multiple gables. A prominent feature is the brick chimneys, tall and thin with extensive corbeling. The building is said to encase a mid 19th century log house. Ca. 1890. Contributing.
25. 130 North Main Street. Dollar General Store.  
Two story brick commercial vernacular building. 1927. Contributing.
26. 128 North Main Street.  
Two story, three bay brick building. Ca. 1850. Contributing.
27. 124 North Main Street.  
Two story, three bay brick building with parapet at top. Ca. 1925. Contributing.
28. 120 North Main Street.  
Two story, two bay brick gable front commercial building with stepped parapet gable. Ca. 1910. Contributing.
29. 116 North Main Street. McWhorter Building.  
Three and one half story, seven bay brick Renaissance Revival style building with arched openings at first story. Massive frieze and cornice. Originally the Hardy County Bank. 1910. Key building.
30. 112 North Main Street.  
Two and one half story, brick commercial building with elaborate bracketed cornice. The storefront has been modified. Ca. 1900. Contributing.
31. 108 North Main Street.  
One story modern brick commercial building. Non-contributing.
32. 106 North Main Street.  
One story concrete block commercial building. Non-contributing.
33. 100 North Main Street. Hardy County Public Library.  
Modern building. Non-contributing.

**United States Department of the Interior  
National Park Service**

**National Register of Historic Places  
Inventory—Nomination Form**

For NPS use only

received

date entered

Continuation sheet

Item number 7

Page 5

34. 141 North Main Street. Fraley Funeral Home.  
Modern building. Non-contributing.

35. 137-139 North Main Street.  
Two story, seven bay commercial and residential building with stuccoed surface. South end appears to be of log construction and remainder of frame. Ca. 1820. Contributing.

36. 135 North Main Street.  
Two story, three bay frame or log house with attached gable front frame addition at the south end. Original section mid 19th century, additions and accretions, Ca. 1900. Contributing.

37. 131 North Main Street. Bean Hardware Store.  
Commercial building. Non-contributing.

38. 127-129 North Main Street.  
Two story, nine bay brick former South Branch Hotel building. The five south bays have a watertable, 9/9 windows at the first story and flemish bond brick work. The north four bays have common bonding and appear to date from the mid 19th century. Ca. 1790. Key building.

39. 119 North Main Street. McCoy Theatre.  
Two and one half story, three bay brick commercial building with corbeled trim and stepped parapet top. 1927. Contributing.

40. 107-109 North Main Street. McMechan House.  
Three story, six bay brick building with Greek Revival style features. Low pitched hipped roof with "captain's walk." Nineteenth century presidential campaign slogans painted on interior wall. Built 1853. Key building.

41. 105 North Main Street.  
One story modern commercial building. Non-contributing.

42. 101 North Main Street.  
Two story, three bay brick building with Greek Revival style features. Low pitched hipped roof terminating with a square cupola. Formerly Bank of The Valley of Virginia. Ca. 1860. Contributing.

43. 100 South Main Street. Mullin Hotel.  
Three story, five bay brick hotel building with Greek Revival style features. Low pitched hipped roof terminating with a small raised deck. Built 1847. Key building.

United States Department of the Interior  
National Park Service

National Register of Historic Places  
Inventory—Nomination Form

For NPS use only

received

date entered

Continuation sheet

Item number 7

Page 6

44. 118<sup>6</sup> South Main Street.

Two story, five bay brick commercial building terminating with a stepped parapet at the roof line. Vertical corbeled brick trim. Ca. 1920. Contributing. *The old courthouse is the back part of the building. F3*

45. 122 South Main Street.

Three story, three bay brick commercial building with combined Greek Revival and Italian Villa style features. Notable elements include an original storefront and brackets and barge trim. Built 1864. Key building.

46. 124 South Main Street.

Two story, three bay brick residence with Greek Revival features, particularly evidenced in the entrance porch. 6/6 windows. Ca. 1850. Contributing.

47. 128 South Main Street.

Two story, five bay log house covered with plain lapped wood siding. Built in two parts with the north end appearing older. Exterior brick chimneys. Early 19th century. Contributing.

48. 148 South Main Street.

Two story, two bay brick turn of the century commercial building with arched parapet top. Concrete block additions to each side. Contributing.

49. 152 South Main Street.

Two story stuccoed four square house with corbeled chimneys. Ca. 1915. Contributing.

50. 154 South Main Street.

Modern gable front commercial building. Non-contributing.

51. 156 South Main Street. Strout Realty.

Concrete block commercial building. Non-contributing.

52. 105 South Main Street.

Three and one half story, three bay bank building with early 20th century commercial eclectic styling. Low pitched hipped roof with a large overhang. It is heavily bracketed and topped with a balustrade. Former South Branch Valley National Bank. 1909. Key building.

53. 109 South Main Street. Moorefield Presbyterian Church.

One and a half story Greek Revival style brick church following the temple form. Small dependency in same style to rear. 1847. Key building.

United States Department of the Interior  
National Park Service

**National Register of Historic Places  
Inventory—Nomination Form**

For NPS use only

received

date entered

Continuation sheet

Item number 7

Page 7

54. \*\*113 South Main Street. Old Stone Tavern.  
Two story, three bay stone house with frame late Queen Anne style addition to the south. Unusual curved "tent" porch roof. Said to date from 1788. Key building.
55. 117 South Main Street. Moorefield Auto Parts.  
Modern building. Non-contributing.
56. 123 South Main Street.  
1950's brick rancher. Non-contributing.
57. 125 South Main Street.  
Elaborate Queen Anne style house of frame construction. Multiple decorated gables, heavily turned porch posts, decorated barge boards and finials characterize the building. Original cast iron fence in front of property; matching out building to rear. Built 1910. Key building.
58. \*\*131 South Main Street. Maslin-Gamble House.  
Brick Greek Revival style house with low pitched hipped roof. Ca. 1850. Key building.
59. East side of Central Avenue at South Main Street. One and a half story, four bay bungalow with matching garage. 1920's. Contributing.
60. South side, Town Run Road, just west of South Main Street. Two story, three bay L-shaped brick house with gable roof. Central entrance. Mid 19th century. Contributing.
61. 200 South Main Street.  
Two story, three bay brick Greek Revival style house with a low pitched hip roof topped with a small balustraded deck. Decorated window heads. Ca. 1860. Contributing.
62. 204 South Main Street.  
Chevrolet dealership. Non-contributing.
63. 210 South Main Street.  
Two story, three bay log house covered with asbestos shingle siding. Exterior brick chimneys. Early 19th century. Contributing.
64. 105 Potomac Avenue.  
Two story, three bay frame house covered with German siding. Small central brick flue. Ca. 1920. Contributing.

United States Department of the Interior  
National Park Service

**National Register of Historic Places  
Inventory—Nomination Form**

For NPS use only

received

date entered

Continuation sheet

Item number 7

Page 8

65. 107 Potomac Avenue.  
Two story, three bay frame house covered with composition siding. Central brick flue. Ca. 1920. Contributing.
66. 109 Potomac Avenue.  
Two story, three bay frame house covered with aluminum siding. Central brick flue. Ca. 1920. Contributing.
67. 111 Potomac Avenue.  
Two story, three bay frame house covered with stucco. Central brick flue. Ca. 1920. Contributing.
68. 113 Potomac Avenue.  
One and a half story, gable front frame house with interior brick flue. Ca. 1920. Contributing.
69. Southwest corner of Park Street and South Main Street.  
Two story, two bay stucco covered house possibly of log construction. 9/6 windows at first story. Mid 19th century. Contributing.
70. West side of South Main, South of Park Street.  
Two story, three bay frame house with cross gable. Decorated eaves trim and window heads. Ca. 1910. Contributing.
71. 201 South Main Street.  
Two story, three bay frame house with central entrance. Ca. 1920. Contributing.
72. 205 South Main Street.  
Two story, three bay frame house covered with stucco. Ca. 1920. Contributing.
73. 209 South Main Street.  
Stuccoed bungalow. Ca. 1930. Contributing.
74. 213 South Main Street.  
Two story, gable front frame house. Ca. 1910. Contributing.
75. 217 South Main Street.  
Two story L-shaped late Queen Anne style house with projecting gables. Covered with aluminum siding. Ca. 1910. Contributing.

United States Department of the Interior  
National Park Service

**National Register of Historic Places  
Inventory—Nomination Form**

For NPS use only

received

date entered

Continuation sheet

Item number 7

Page 9

76. 219-221 South Main Street.

Two story, five bay log house covered with composition siding. The south three bays may be older with a large central chimney and Germanic characteristics. Home of the Jacob Hutter family. Mid-late 18th century. Said to have been located originally at Old Fields. In 1850 it was dismantled and rebuilt on the present site. Key building.

77. 223 South Main Street.

Two story, three bay frame house with a decorated cross gable. Covered with narrow gauge siding. Ca. 1920. Contributing.

78. 225 South Main Street.

One and a half story, three bay gable front house with a false front forming a parapet top. Ca. 1920. Contributing.

79. 227 South Main Street.

One story modern brick commercial building. Non-contributing.

80. 231 South Main Street.

Two story commercial/residential building. 1940's. Non-contributing.

81. 237 South Main Street.

Two story frame house with late Queen Anne style features. Covered with aluminum siding. Ca. 1920. Contributing.

82. 239 South Main Street.

Aluminum sided two story frame building. Non-contributing.

83. East side South Main Street. High's Dairy Store.

Commercial building. Non-contributing.

84. East side South Main Street, north of river.

Mobile home. Non-contributing.

85. East side of South Main Street, north of river.

Commercial garage. Non-contributing.

86. East side of South Main Street, north of river.

Two story, three bay log house covered with plain lapped siding. Mid-late 19th century. Contributing.

87. East side of South Main Street at north edge of river.

One bay by two bay, two story gable front log house, covered with stucco. Late 19th century. Contributing.



United States Department of the Interior  
National Park Service

**National Register of Historic Places  
Inventory—Nomination Form**

For NPS use only

received

date entered

Continuation sheet

Item number 7

Page 10

88. 300 South Main Street, south of river.  
Two story, three bay frame or log house with Greek Revival stylistic features. Inside end brick chimney at south wall. Ca. 1850. Contributing.
89. 304 South Main Street.  
Early 1950's mobile house. Non-contributing.
90. 308 South Main Street.  
Two story frame house with late Queen Anne stylistic features. Ca. 1910. Contributing.
91. 312 South Main Street.  
Two story, two bay frame four square house with cross gable. Covered with narrow gauge siding. Ca. 1912. Built by M.A. Bean. Contributing.
92. 314 South Main Street.  
Two story, three bay L-shaped house with central cross gable. Covered with narrow gauge siding. Ca. 1912. Built by M.A. Bean. Contributing.
93. 316 South Main Street.  
Two story, two bay four square with a central cross gable. Covered with narrow gauge siding. Ca. 1912. Built by M.A. Bean. Contributing.
94. 318 South Main Street.  
Two story, three bay L-shaped frame house with central cross gable. Covered with narrow gauge siding. Ca. 1912. Built by M.A. Bean. Contributing.
95. 324 South Main Street.  
Two story frame house with late Queen Anne style features applied to a four square base unit. Covered with aluminum siding. Ca. 1910. Contributing.
96. 328 South Main Street.  
Two story, three bay frame L-shaped house with a central cross gable. Ca. 1910. Contributing.
97. 332 South Main Street.  
One and a half story late Queen Anne style house with semi-hexagonal projecting bays beneath overhanging gables. Ca. 1900. Contributing.
98. 336 South Main Street.  
Two story, three bay frame house with central cross gable. Covered with plain lapped siding. Ca. 1920. Contributing.

United States Department of the Interior  
National Park Service

**National Register of Historic Places  
Inventory—Nomination Form**

For NPS use only

received

date entered

Continuation sheet

Item number 7

Page 11

99. 338 South Main Street.  
Frame one and a half story gable front bungalow covered with narrow lapped siding. Ca. 1925. Contributing.
100. 342 South Main Street.  
One and a half story stuccoed bungalow. Ca. 1930. Contributing.
101. 348 South Main Street.  
Two story, frame four square house with hip roofed dormer. Ca. 1920. Contributing.
102. 350 South Main Street.  
Modern house. Non-contributing.
103. East side of South Main Street, south of river.  
Three story frame grist mill with low pitched hipped roof. Embellished with projecting cornices above the windows. Covered with German siding. Ca. 1875. Key building.
104. 305 South Main Street.  
Car wash. Non-contributing.
105. 307 South Main Street.  
Two story, three bay frame grocery store covered with German siding. False front with elaborate bracketed cornice. Original store front; original use. Second floor windows replaced. Ca. 1875. Key building.
106. 309 South Main Street.  
Mobile home. Non-contributing.
107. 311 South Main Street.  
Two story, three bay frame four square house covered with narrow width plain lapped siding. Wrap around porch and gabled projection are reminiscent of the Queen Anne style. Ca. 1910. Contributing.
108. 321 South Main Street.  
Two story, three bay L-shaped frame house covered with aluminum siding. Ca. 1900. Contributing.
109. 323 South Main Street.  
Two story, three bay frame house with modern brick veneer. Non-contributing.
110. 325 South Main Street.  
Two story, three bay L-shaped brick house, with inside end chimneys. Ca. 1870. Contributing.

United States Department of the Interior  
National Park Service

National Register of Historic Places  
Inventory—Nomination Form

For NPS use only

received

date entered

Continuation sheet

Item number 7

Page 12

111. 329 South Main Street.

Two story, two bay stuccoed frame house with central brick flue. Ca. 1910. Contributing.

112. 331 South Main Street.

South End Garage. Non-contributing.

113. 333 South Main Street.

Two story, three bay gable front frame house covered with German siding. Ca. 1920. Contributing.

114. 343 South Main Street.

Two story, three bay frame house with Greek Revival style features. 6/6 windows; hipped roof terminating with a flat deck. Ca. 1870. Contributing.

115. Southeast corner of Jefferson and Metallurgy Streets.

Two story, three bay frame German sided four square house. Ca. 1910. Contributing.

116. 224 North Elm Street.

Two story, three bay frame house covered with composition siding and stucco. Ca. 1900. Contributing.

117. 220 North Elm Street.

Two story, three bay L-shaped frame house with central cross gable. Covered with narrow width plain lapped siding. Ca. 1910. Contributing.

118. 216 North Elm Street.

Two story, three bay frame house covered with German siding. Shed extension to rear. Ca. 1910. Contributing.

119. 214 North Elm Street.

Two story, three bay frame four square house covered with plain lapped siding. Ca. 1920. Contributing.

120. 210 North Elm Street.

Two story, three bay frame L-shaped house with plain lapped wood siding. Ca. 1880. Contributing.

121. 206 North Elm Street.

Two story frame late Queen Anne style house covered with narrow gauge wood siding. Central corbeled chimney. Ca. 1910. Contributing.

122. 204 North Elm Street.

Modern brick office building. Non-contributing.

United States Department of the Interior  
National Park Service

**National Register of Historic Places  
Inventory—Nomination Form**

For NPS use only

received

date entered

Continuation sheet

Item number 7

Page 13

123. 200 North Elm Street.  
Two story, three bay frame house covered with stucco. Ca. 1910.  
Contributing.

124. East side of North Elm Street, north of the Court House.  
One story, three bay hip roofed house with central brick flue. Ca. 1920.  
Contributing.

125. East side of North Elm Street, north of the Court House.  
One story, three bay gable front house covered with German siding. Ca. 1920.  
Contributing.

126. Hardy County Court House. Northeast corner of North Elm and  
Washington Streets. *204 WASHINGTON*  
Three and one half story brick Colonial Revival style building. 1914. Key  
building.

127. 126 North Elm St.  
Two story, three bay frame german sided house with extension to south. Ca.  
1890. Contributing.

128. 124 North Elm Street.  
Two story T-shaped frame house with steeply pitched roof. Covered with  
narrow gauge siding. Ca. 1890. Contributing.

129. 120 North Elm Street.  
Two story, three bay gable front house, central entrance. Covered with  
aluminum siding. Ca. 1920. Contributing.

130. 118 North Elm Street.  
One story, three bay gable front house covered with German siding. Ca. 1920.  
Contributing.

131. 116 North Elm Street.  
Two story frame, four square house with semi-hexagonal projecting bay beneath  
an overhanging gable. Ca. 1910. Contributing.

132. 114 North Elm Street.  
Two story, five bay log house covered with plain lapped siding. Built in two  
parts. Late 18th century. Key building.

133. 108-110 North Elm Street.  
Two story, four bay frame four square house, built as a duplex. Covered with  
German siding. Ca. 1920. Contributing.

United States Department of the Interior  
National Park Service

**National Register of Historic Places  
Inventory—Nomination Form**

For NPS use only

received

date entered

Continuation sheet

Item number 7

Page 14

134. 106 North Elm Street.

Frame two story four square house with projecting gables. Covered with German siding. Ca. 1910. Contributing.

135. Northwest corner of North Elm and Winchester Streets.

Methodist Episcopal Church. Brick T-shaped church building with Gothic stylistic features. 1920. Contributing.

136. Southeast corner of North Elm and Washington Streets.

Presbyterian Manse. Two story, three bay brick house in the Greek Revival style. It features a low pitched hipped roof terminating with a raised balustraded deck. Ca. 1860. Key building.

137. 121 North Elm Street.

Two story frame Queen Anne style house of irregular plan. Outstanding features include a polygonal corner tower and elaborately detailed decorative barge work. Ca. 1890. Key Building.

138. 119 North Elm Street.

Two story, three bay log house with a large brick central chimney. Covered with composition siding. Appears to follow the traditional German house plan. Mid-late 18th century. Key building.

139. 117 North Elm Street.

One and a half story, four bay stuccoed frame house featuring a three bay raised wall dormer. Ca. 1920. Contributing.

140. 115 North Elm Street.

Two story, frame gable front house. Ca. 1920. Contributing.

141. 111 North Elm Street.

Two story, three bay frame four square house covered with narrow gauge siding. Ca. 1910. Contributing.

142. 107 North Elm Street.

Two story, four bay log house covered with German siding. 6/6 windows. Mid 19th century. Contributing.

143. Northeast corner Elm and Winchester Streets.

Two story frame late Queen Anne style house with multiple gables. Covered with plain lapped siding and decorative shingles in the gables. Ca. 1910. Contributing.

United States Department of the Interior  
National Park Service

National Register of Historic Places  
Inventory—Nomination Form

For NPS use only

received

date entered

Continuation sheet

Item number 7

Page 15

144. Southwest corner of Elm and Winchester Streets.

Large L-shaped brick and stuccoed building consisting of two sections with three bay facades. The stuccoed section of frame or log construction is said to date from the late 18th century while the brick part is believed to date from 1811. Key building.

145. \*\*Southeast corner of Elm and Winchester Streets.

Large L-shaped brick building which was the old Hardy County Court House. 1793 with addition to east built in 1833. Key Building.

146. 108 South Elm.

Modern House. Non-contributing.

147. 110 South Elm.

Two story frame house with late Queen Anne style characteristics. Ca. 1910. Contributing.

148. 112 South Elm.

Two story, three bay house with shed extension to rear. Probably of log construction. Ca. 1830. Contributing.

149. North side of Washington Street, between Main and Elm.

Flynn's Furniture and Appliances

Two story frame commercial building with Classical Revival features. Overhanging roof with large, plain modillions. Two story porch along the front. Ca. 1920. Contributing.

150. North side of Washington Street, between Main and Elm.

One story modern building. Non-contributing.

151. 107 Washington Street.

Two story, three bay house covered with narrow gauge siding. Ca. 1920. Contributing.

152. 109 Washington Street.

Two story, three bay frame house with a projecting gable at the front. Covered with narrow gauge siding. Ca. 1920. Contributing.

153. 111 Washington Street.

Two story gable front frame house with 2/2 windows and exposed false rafters at eaves. Ca. 1920. Contributing.

154. North side of Washington Street, between Elm and Rosemary.

Modern building adjacent to Court House. Non-contributing.

United States Department of the Interior  
National Park Service

**National Register of Historic Places  
Inventory—Nomination Form**

For NPS use only

received

date entered

Continuation sheet

Item number 7

Page 16

155. 210 Washington Street, Eberly House.  
Two story cruciform plan frame house covered with narrow gauge siding.  
Characterized by elaborate trim on porches. Ca. 1890. Contributing.

156. North side of Washington Street, between Elm and Rosemary.  
Modern house. Non-contributing.

157. North side of Washington Street, between Elm and Rosemary.  
Modern house. Non-contributing.

158. 216 Washington Street.  
Frame four square house covered with aluminum siding. It has a central cross  
gable. Ca. 1920. Contributing.

159. 218 Washington Street.  
Two story gable front house. Non-contributing.

160. 220 Washington Street.  
Two story, L-shaped house of frame or log construction. Covered with plain  
lapped siding. Ca. 1860. Contributing.

161. 224 Washington Street.  
Two story frame house following a cruciform plan. Covered with narrow gauge  
siding. Ca. 1900. Contributing.

162. 209 Washington Street.  
Modern house. Non-contributing.

163. 213 Washington Street.  
Late Gothic cottage of frame construction covered with German siding.  
Finials decorate the roof peak at the gables. Ca. 1890. Contributing.

164. 215 Washington Street.  
Two story, three bay frame house with a one story kitchen extension to the  
rear. Covered with aluminum siding. Decorative round ventilators in gables.  
Two interior brick flues. Ca. 1890. Contributing.

165. 217 Washington Street.  
Two story, three bay frame house with aluminum siding. Ca. 1900.  
Contributing.

166. 219 Washington Street.  
Two story, frame cruciform plan house covered with German siding.  
Decorative porch trim and steeply pitched gabled wall dormers. Ca. 1900.  
Contributing.

United States Department of the Interior  
National Park Service

**National Register of Historic Places  
Inventory—Nomination Form**

For NPS use only

received

date entered

Continuation sheet

Item number 7

Page 17

167. 228 Washington Street.  
Modern house. Non-contributing.

168. 232 Washington Street.  
Two story, three bay frame house covered with German siding. Central brick flue. Ca. 1910. Contributing.

169. 234 Washington Street.  
Stone and stucco faced cottage with steeply pitched roof. Ca. 1910. Contributing.

170. 236 Washington Street.  
Two story frame gable front house covered with aluminum siding. Ca. 1920. Contributing.

171. 221 Washington Street.  
Two story, three bay frame house covered with asbestos shingle siding. It has a central cross gable with decorative shingle trim. Ca. 1900. Contributing.

172. 223 Washington Street.  
Two story frame gable front house covered with German siding. Ca. 1920. Contributing.

173. 227 Washington Street.  
One and a half story frame bungalow. Ca. 1925. Contributing.

174. 229 Washington Street.  
One and a half story, three bay gable front house covered with narrow gauge siding. Ca. 1925. Contributing.

175. 231 Washington Street.  
Two story, three bay stuccoed house of frame construction. Inside end brick chimneys with corbeled tops. Decorative trim at barge and eaves. Ca. 1875. Contributing.

176. 233 Washington Street.  
Mobile home. Non-contributing.

177. Southwest corner of Washington Street and Clay Avenue.  
Two story, stuccoed frame house in the late Queen Anne style. An L-shaped structure with a projecting polygonal tower and porch in the angle formed by the "L." Ca. 1900. Contributing.

178. Northeast corner of Clay Ave. and Washington Street.  
Mobile home. Non-contributing.



United States Department of the Interior  
National Park Service

National Register of Historic Places  
Inventory—Nomination Form

For NPS use only

received

date entered

Continuation sheet

Item number 7

Page 18

179. 308 Washington Street.

Two story, three bay frame house covered with plain lapped siding. Ca. 1920. Contributing.

180. 310 Washington Street.

Two story, two bay gable front house with overhanging two story porch. Ca. 1920. Contributing.

181. 312 Washington Street.

Two story frame cottage with steeply pitched gable roof and cross gable. Covered with narrow width lapped siding. Central brick flue. Ca. 1925. Contributing.

182. 314 Washington Street.

Two story gable front frame house covered with aluminum or vinyl siding. Ca. 1920. Contributing.

183. Northwest corner of Washington Street and Winchester Avenue.

Two story, three bay frame house with extension to rear. Ca. 1910. Contributing.

184. West side of Clay Ave., between Washington and Winchester.

Two story frame house with late Queen Anne style features. The principal roof is hipped with projecting gables. Ca. 1910. Contributing.

185. West side of Clay Ave., between Washington and Winchester.

Two story, three bay frame house with steeply pitched central cross gable. Small interior brick flue. Ca. 1890. Contributing.

186. North side of Winchester Ave. between Main and Elm.

Non-contributing.

187. North side of Winchester Ave. between Main and Elm.

Two story frame house with hipped roof and several projecting gables. Ca. 1900. Contributing.

188. North side of Winchester Ave. between Main and Elm.

Modern house. Non-contributing.

189. South side of Winchester Ave. between Main and Elm.

One and a half story gable front house with steeply pitched overhanging roof. Ca. 1910. Contributing.

190. South side of Winchester Ave. between Main and Elm.

One and a half story house with steeply pitched gable roof and projecting gabled dormers. Ca. 1920. Contributing.

United States Department of the Interior  
National Park Service

National Register of Historic Places  
Inventory—Nomination Form

For NPS use only

received

date entered

Continuation sheet

Item number 7

Page 19

191. South side of Winchester Ave. between Main and Elm.  
Two story, two bay four square house with hip roofed dormer. Ca. 1910.  
Contributing.
192. South side of Winchester Ave. between Main and Elm.  
Two story, three bay frame four square house with hip roofed dormer. Ca. 1910. Contributing.
193. South side of Winchester Ave., west of Elm Street.  
One story hip roofed frame building covered with German siding. Ca. 1920.  
Contributing.
194. South side of Winchester Ave. west of Elm Street.  
Brick commercial building. Non-contributing.
195. North side of Winchester Ave., east of Elm Street.  
Two story, two bay log house with large exterior stone chimney. Covered with plain lapped siding. The building is attached to #143. Ca. 1810.  
Contributing.
196. City Hall. Winchester Ave., between Elm and Rosemary.  
Two story brick building with parapet top. Arched window openings accented with corbeled brick work. Rebuilt 1926. Contributing.
197. 212 Winchester Avenue. Lobb House.  
Two story, five bay brick house with Greek Revival features. Large inside end brick chimneys. Ca. 1830. Key building.
198. 214 Winchester Avenue.  
Two story, gable front frame house covered with plain lapped siding. Ca. 1925. Contributing.
199. 216 Winchester Avenue.  
Two story, gable front frame house covered with plain lapped siding. Ca. 1925. Contributing.
200. 218 Winchester Avenue.  
Two story brick cased late four square house. Ca. 1930. Contributing.
201. 220 Winchester Avenue.  
Two story, two bay frame four square house with hip roofed dormer. Ca. 1910.  
Contributing.

United States Department of the Interior  
National Park Service

National Register of Historic Places  
Inventory—Nomination Form

For NPS use only

received

date entered

Continuation sheet

Item number 7

Page 19

191. South side of Winchester Ave. between Main and Elm.  
Two story, two bay four square house with hip roofed dormer. Ca. 1910.  
Contributing.

192. South side of Winchester Ave. between Main and Elm.  
Two story, three bay frame four square house with hip roofed dormer. Ca.  
1910. Contributing.

193. South side of Winchester Ave., west of Elm Street.  
One story hip roofed frame building covered with German siding. Ca. 1920.  
Contributing.

194. South side of Winchester Ave. west of Elm Street.  
Brick commercial building. Non-contributing.

195. North side of Winchester Ave., east of Elm Street.  
Two story, two bay log house with large exterior stone chimney. Covered with  
plain lapped siding. The building is attached to #143. Ca. 1810.  
Contributing.

196. City Hall. Winchester Ave., between Elm and Rosemary.  
Two story brick building with parapet top. Arched window openings accented  
with corbeled brick work. Rebuilt 1926. Contributing.

197. 212 Winchester Avenue. Lobb House.  
Two story, five bay brick house with Greek Revival features. Large inside  
end brick chimneys. Ca. 1830. Key building.

198. 214 Winchester Avenue.  
Two story, gable front frame house covered with plain lapped siding. Ca.  
1925. Contributing.

199. 216 Winchester Avenue.  
Two story, gable front frame house covered with plain lapped siding. Ca.  
1925. Contributing.

200. 218 Winchester Avenue.  
Two story brick cased late four square house. Ca. 1930. Contributing.

201. 220 Winchester Avenue.  
Two story, two bay frame four square house with hip roofed dormer. Ca. 1910.  
Contributing.

United States Department of the Interior  
National Park Service

**National Register of Historic Places  
Inventory—Nomination Form**

For NPS use only

received

date entered

Continuation sheet

Item number 7

Page 20

202. 211 Winchester Avenue.

Two story frame four square house with Queen Anne style projecting gables. Covered with narrow width lapped siding. Ca. 1910. Contributing.

203. 215 Winchester Avenue.

Two story four square house with Colonial Revival stylistic features. Modern addition to the east. Ca. 1920. Contributing.

204. 307 Winchester Avenue.

Two story brick house in the late Queen Anne style. It is accented by a semi-hexagonal projecting bay beneath a heavily bracketed overhanging gable. Ca. 1910. Contributing.

205. 304 Winchester Avenue.

Two story, three bay gothic cottage with three gabled wall dormers across the front. Some windows accented by gothic pointed arches. Ca. 1875. Key building.

206. North side of Winchester Ave. between railroad and Clay Ave.

Modern house. Non-contributing.

207. North side of Winchester Ave. between railroad and Clay Ave.

Modern brick house. Non-contributing.

208. 310 Winchester Avenue.

Two story, three bay frame house with semi-hexagonal projecting entrance bay. Ca. 1910. Contributing.

209. Junction of Winchester and South Fork Road.

Emmanuel Episcopal Church. Stuccoed Gothic Revival style building. 1879. Contributing.

210. South side of Winchester Ave., east of Emmanuel Episcopal Church.

Two story frame late Queen Anne style building with multiple steeply pitched gables. Ca. 1900. Contributing.

211. South side of Winchester Ave., east of Emmanuel Episcopal Church.

Two story frame house with mixed Queen Anne and Colonial Revival style features. 1907. Contributing.

212. South side, South Fork Road, east of junction with Winchester Ave.

Two story frame wedge-shaped house covered with plain lapped siding. Ca. 1910. Contributing.

United States Department of the Interior  
National Park Service

**National Register of Historic Places  
Inventory—Nomination Form**

For NPS use only

received

date entered

Continuation sheet

Item number 7

Page 21

213. South side, Allegany Street, west of Main Street.  
Two story, four bay gable front frame building covered with composition siding. Ca. 1920. Contributing.

214. South side, Allegany Street, west of Main Street.  
Modern rancher. Non-contributing.

215. South side of Allegany Street at Town Run Road.  
Two story, three bay stuccoed frame house. Ca. 1890. Contributing.

216. North side of Allegany Street at its end.  
Abandoned frame school house, covered with a combination of plain lapped and German siding. Ca. 1910. Contributing.

217. North side of Allegany Street just east of its end.  
Two story, three bay unsided log house. Ca. 1880. Contributing.

218. North side of Allegany Street at junction with Town Run Road.  
Modern ranch house. Non-contributing.

219. North side of Allegany Street at junction with Town Run Road.  
Frame church building with simple gothic styling. Ca. 1900. Contributing.

220. North side of Allegany Street, west of Main Street.  
Modern house. Non-contributing.

221. Winchester Street, adjacent to cemetery.  
Brick Queen Anne style house. Ca. 1890. Contributing.

222. 106 Rosemary Lane.  
Three bay, one and a half story frame gable front house on concrete block foundations. Ca. 1940. Non-contributing.

223. 104 Rosemary Lane.  
Three bay, two story house covered with plain lapped siding. Probably of log construction. Ca. 1860. Contributing.

## 8. Significance

Period	Areas of Significance—Check and justify below			
prehistoric	archeology-prehistoric	community planning	landscape architecture	religion
1400-1499	archeology-historic	conservation	law	science
1500-1599	agriculture	economics	literature	sculpture
1600-1599	X architecture	education	military	social
X 1700-1799	art	engineering	music	humanitarian
X 1800-1899	commerce	exploration settlement	philosophy	theater
X 1900-	communications	industry	X politics government	transportation
		invention		other (specify)

Specific dates

Builder Architect

Statement of Significance (in one paragraph)

Meets Criteria A & C

Summary

Moorefield, the fourth oldest town in West Virginia is significant for its historical importance as the leading commercial center of Hardy County, its seat of government and for its concentration of regional architectural types dating from the 18th through the early 20th century. Established in 1777, Moorefield is actually older than Hardy County. It was founded by Conrad Moore upon whose property it was laid out. When Hardy County was formed in 1785, Moorefield became the county seat. Therefore, it is historically linked with the formation and continuing conduct of the county government. Most of the 54 lots in the original town were sold between 1780 and 1800 and presumably were occupied shortly thereafter. Moorefield's architectural significance derives from its collection of outstanding examples of regional types from three time periods, the late 18th century, the mid 19th century and the late 19th-early 20th centuries. Within the town today there are a number of 18th century buildings which represent the initial settlement of Moorefield. They have been identified as key buildings in the attached inventory. The next significant group of buildings are Greek Revival, dating from the mid 19th century. Later outstanding buildings are Gothic Revival and Queen Anne.

Additional Information

When Moorefield was incorporated in 1777, its population was less than 100 people. In 1835, the population was 350. Interestingly, in the nearly 20 years between 1835 and 1863 the population nearly doubled to 600. This large increase in population coincides with the numerous mid 19th century Greek Revival style buildings in the town. The population there stabilized, reaching only 620 by 1920. Today the town contains nearly 3000 people. However, although the population figures don't show great increase during the late 19th and early 20th centuries there was substantial activity in Moorefield and as evidenced by the buildings constructed, a great deal of prosperity.

United States Department of the Interior  
National Park Service

**National Register of Historic Places  
Inventory—Nomination Form**

For NPS use only

received

date entered

Continuation sheet

Item number 8

Page 2

Among the more notable examples from the three periods is the "Old Stone Tavern" (#54) built in 1788 and one of the oldest buildings in the town. Once occupied by Conrad Moore and his family, it is the only stone building in Moorefield and is already individually listed in the National Register. The former South Branch Hotel, (#38) the south five bays of which date from ca. 1790 is possibly the oldest standing brick building in Moorefield. The first Hardy County Courthouse, (#145) built in 1793 is also among the oldest buildings and is individually listed in the National Register. Along Elm Street are several sided log structures which appear to date from the late 18th century.

The next significant group of structures date from the Greek Revival period, representing residential, commercial and religious use. The McMechan House (#40) built in 1853 is a three story brick building influenced by the Greek Revival style. It is additionally significant for its original third floor room which is decorated with campaign slogans promoting James Buchanan and John C. Breckinridge for the 1856 presidential campaign. The Maslin-Gamble House (#58) is another example of the Greek Revival style in Moorefield. It is individually listed in the National Register. The Mullin Hotel built in 1847 (#43) is a large 3 1/2 story building which has been rehabilitated into office space and has had some modification at the front elevation. Generally, the Greek Revival style in the South Branch Valley and therefore in Moorefield is characterized by brick construction, low pitched hipped roofs and trabeated entrances.

The third major group of buildings are commercial and residential structures from the late 19th and early 20th centuries exhibiting features of the Queen Anne, Italianate and Gothic Revival styles. Among these is the Italianate commercial building (#45) located at 122 S. Main Street which retains an original storefront. The building dates from 1864. Later commercial structures are the South Branch Valley Bank building (#52), at 105 S. Main, built in 1909 and the Hardy County Bank and Post Office (#29), 116 N. Main, built in 1910. Significant houses from the period include 125 S. Main (#57) an elaborate Queen Anne building and 304 Winchester Avenue (#205) a Gothic Revival cottage.

With its wealth of exemplary architectural types and for its representative qualities in the development and prosperity of Hardy County and the South Branch Valley, Moorefield is significant under National Register criteria A and C.

## 9. Major Bibliographical References

Moore, Alvin Edward, History of Hardy County of the Borderland  
Parson, WV: McClain Publishing Co. 1963

Moorefield Bicentennial Committee, Glancing Backward: A Pictorial History of Moorefield.  
Moorefield WV: Moorefield Examiner. 1977

## 10. Geographical Data

Acreage of nominated property Approximately 70

Quadrangle name Moorefield, WV

Quadrangle scale 1:24,000

UTM References

A 

1	7
---	---

6	7	5	5	0	0
---	---	---	---	---	---

4	3	2	4	3	8	0
---	---	---	---	---	---	---

  
Zone Easting Northing

B 

1	7
---	---

6	7	5	2	8	0
---	---	---	---	---	---

4	3	2	4	4	8	0
---	---	---	---	---	---	---

  
Zone Easting Northing

C 

1	7
---	---

6	7	5	4	6	0
---	---	---	---	---	---

4	3	2	5	7	1	0
---	---	---	---	---	---	---

D 

1	7
---	---

6	7	5	6	2	0
---	---	---	---	---	---

4	3	2	5	9	8	0
---	---	---	---	---	---	---

E 

1	7
---	---

6	7	5	7	2	0
---	---	---	---	---	---

4	3	2	5	9	6	0
---	---	---	---	---	---	---

F 

1	7
---	---

6	7	6	2	2	0
---	---	---	---	---	---

4	3	2	5	6	0	0
---	---	---	---	---	---	---

G 

1	7
---	---

6	7	6	2	0	0
---	---	---	---	---	---

4	3	2	5	4	0	0
---	---	---	---	---	---	---

H 

1	7
---	---

6	7	5	7	2	0
---	---	---	---	---	---

4	3	2	5	3	4	0
---	---	---	---	---	---	---

Verbal boundary description and justification

List all states and counties for properties overlapping state or county boundaries

state	code	county	code
-------	------	--------	------

state	code	county	code
-------	------	--------	------

## 11. Form Prepared By

name/title Paula Stoner Reed, Architectural Historian

organization Preservation Associates, Inc.

date September, 1984

street & number 207 S. Potomac Street

telephone (301) 791-7880

city or town Hagerstown,

state Maryland 21740

## 12. State Historic Preservation Officer Certification

The evaluated significance of this property within the state is:

☐ national ☐ state ☐ local

As the designated State Historic Preservation Officer for the National Historic Preservation Act of 1966 (Public Law 89-665), I hereby nominate this property for inclusion in the National Register and certify that it has been evaluated according to the criteria and procedures set forth by the National Park Service.

State Historic Preservation Officer signature

title \_\_\_\_\_ date \_\_\_\_\_

For NPS use only

I hereby certify that this property is included in the National Register

date \_\_\_\_\_

Keeper of the National Register

Attest:

date \_\_\_\_\_

Chief of Registration



United States Department of the Interior  
National Park Service

**National Register of Historic Places  
Inventory—Nomination Form**

For NPS use only

received

date entered

Continuation sheet

Item number 10

Page 2

Verbal Boundary Description

The district boundaries are as follows: beginning at a point at the east curb line of North Main Street, opposite the north property line of the building located at 305 North Main Street, and extending in an easterly direction to the rear property line; then turning south and continuing to the south curb line of Jefferson Street at the west edge of an alley way; and turning east and following the curb line and continuing across Elm Street with the curb line to the east curb line of Elm Street; then turning south and following the east curb line to the south curb line of a narrow unnamed street located north of the court house; then turning east along the said south curb line to a point opposite the rear property lines of the properties facing onto the east side of Elm Street, just north of the court house; then turning south and following said rear property lines to intersect with the court house property; then turning east and following the rear property lines of the buildings facing onto the north side of Washington Street to Winchester Avenue; then following the west curb line of Winchester Avenue south to the north curb line of Washington Street; then turning west and following the north curb line to the west curb line of Clay Street; then turning south along the west curb line and continuing to the south curb line of Winchester Avenue; and following said curb line in an east and northerly direction to the south property line of the property located immediately south of the cemetery entrance; then turning east along said property line to intersect with the rear property lines of the properties facing onto the south side of Winchester Avenue; then continuing to a point on South Fork Road opposite the east property line of the second property east of the B & O Railroad, on the south side of South Fork Road; then crossing South Fork Road and following the east, south and west boundaries of said property to the south curb line of South Fork Road; then following South Fork Road southwesterly to and across the railroad tracks to the east property line for the property located on the south side of Winchester Avenue, immediately west of the railroad; then continuing in a westerly direction along the rear property line of the properties facing onto the south side of Winchester Avenue to a point opposite the rear property line of the properties facing onto the east side of South Elm Street; then turning south along the said rear property lines to the south property line of the building located at 112 South Elm Street; then following that south property line in a westerly direction to the east curb line of South Elm Street; then turning north along the east curb line to a point opposite the south property line of the lot located at the southwest corner of Elm and Winchester; then turning west along said property line and the south property lines of other lots facing onto the west side of Winchester Avenue to intersect with the rear property lines of those properties facing onto the east side of Main Street; then

United States Department of the Interior  
National Park Service

**National Register of Historic Places  
Inventory—Nomination Form**

For NPS use only

received

date entered

Continuation sheet

Item number 10

Page 3

continuing in a southerly direction to and across the South Fork of the south Branch River and continuing with south property lines to the property upon which 309 and 311 S. Main are located; then continuing south across this property to exclude the row of mobile homes at the rear of the lot; then turning south along the north curb line of Rohrbaugh Ave. to a point opposite the east curb line of South Main; then proceeding south to the north property line of 321 South Main; then turning east to the east property line; then turning to the south and following the east property lines to the south property line of 333 South Main; then turning west with the south property line and proceeding to the east curb line of South Main Street; then turning south to the north property line of 343 South Main; then turning east to a point 15 feet behind the house; then turning south across the lot to its south property line; then turning west with the south property line to and across South Main Street; then turning south with the west curb line to the north curb line of Bean Lane; then turning to the west along the north curb line of Bean Lane to a point opposite the rear property lines of those properties facing onto the west side of South Main Street; then proceeding in a northerly direction along said rear property lines to the south bank of the South Fork of the South Branch River; then turning to the east and following the south bank of the river to the west curb line of South Main Street; then turning north and proceeding across the river with the east curb line and continuing with the west curb line in a northerly direction to the south property line of the second property south of Park Street; then turning west and following the south property line to the west property line; then following the west property line in a northerly direction to the west property line of the lot located at the southwest corner of South Main and Park Streets; then continuing with the west property line to and across Park Street to its north curb line; then turning east with the north curb line to meet the west curb line of South Main Street; then proceeding north along the west curb line to the north curb line of Potomac Avenue; then turning west along the north curb line to a point opposite the west lot line of the building located at 113 Potomac Avenue; then turning north and following the lot line to the rear lot line; then turning east along the rear lot line of the buildings facing onto the north side of Potomac Avenue to a point opposite the rear property lines of the property located at 200 South Main Street; then turning north along said rear property line, and continuing with adjacent lot line facing onto South Main Street to and across Town Run Road and continuing with the west lot lines to a point opposite the rear property lines of the lots facing onto the south side of Allegany Street; then turning to the west and continuing to the intersection of Town Run Road and Allegany Street; then crossing Allegany Street to its north curb line; then following said curb line in a northwesterly direction to a point opposite the west corner of an abandoned school house; then extending in a northeasterly direction along the foundation of the former school building to a point along the rear property line of the properties facing onto the south side of Allegany Street; then following said rear property lines to a point in the rear property line of the building located at 208 N. Main Street; then

United States Department of the Interior  
National Park Service

**National Register of Historic Places  
Inventory—Nomination Form**

For NPS use only

received

date entered

Continuation sheet

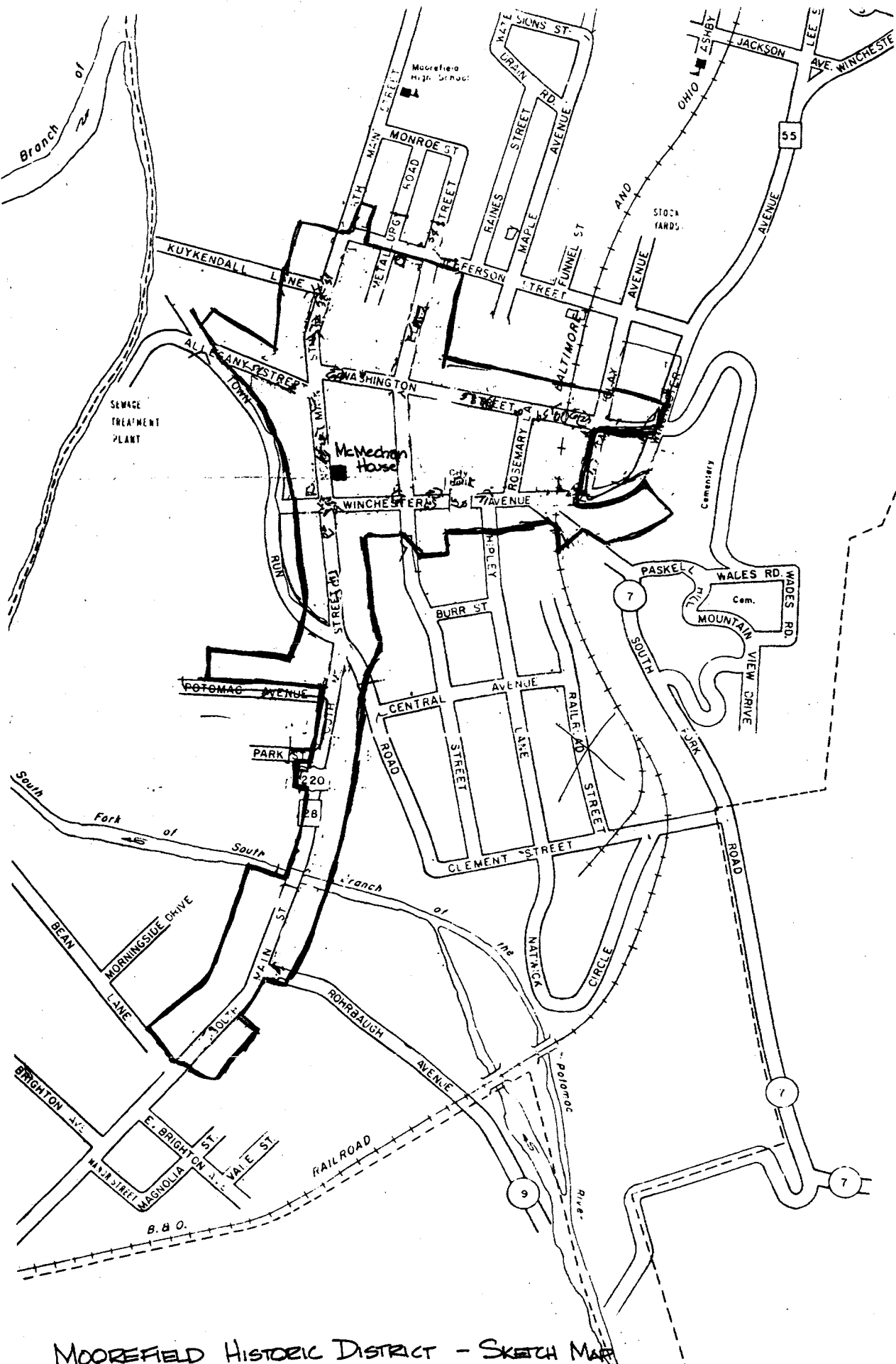
Item number 10

Page 4

turning north and following the rear property lines of the properties facing onto North Main Street to the south property line of the South Branch Valley National Bank property; then turning east with said property line to a point on the east curb line of North Main Street; then turning north and following the east curb line to the place of beginning.

Boundary Justification

The boundaries of the Moorefield Historic District were drawn to include the concentration of historic buildings within the city limits. Generally, the district includes Main Street from Jefferson Street at the north end south to Bean Lane. Also included is Winchester Avenue from Main Street east to the cemetery entrance, Washington Street, Elm Street from Jefferson Street and Alleganey Street south to a point south of the house located at 112 South Elm Street. The district contains a mix of commercial, civic and residential buildings. The commercial structures are located almost exclusively along Main Street, particularly in the block between Winchester and Washington Streets. The rest of Main Street within the district is mixed commercial and residential, a blend which appears to have existed for many years.

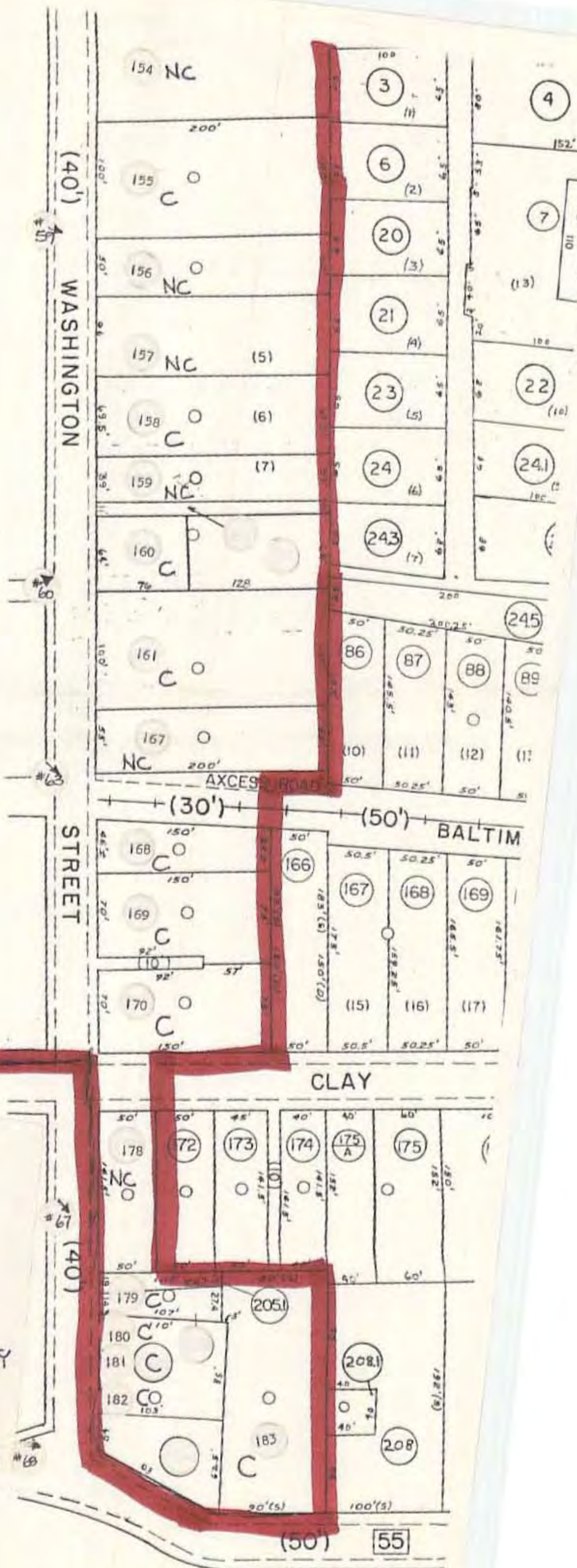


MOOREFIELD HISTORIC DISTRICT - SKETCH MAP  
APPROXIMATE BOUNDARY - NOT TO SCALE





SEE 03



MOOREFIELD HISTORIC DISTRICT  
HARDY CO. W.V.

LEGEND:

3 - BUILDING NUMBER

#1 - PHOTO NUMBER & VIEW

C - CONTRIBUTING PROPERTY

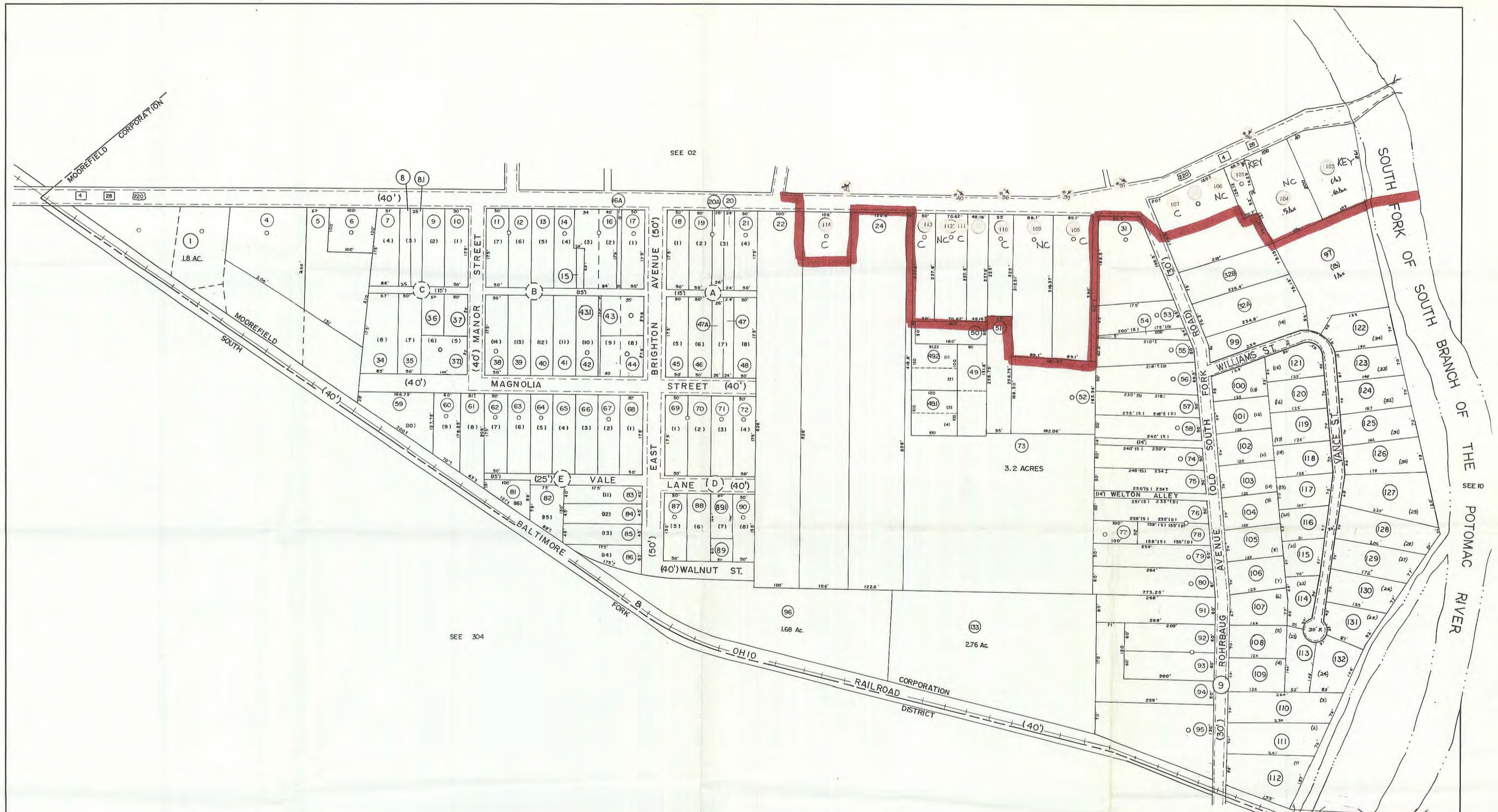
NC - NON-CONTRIBUTING PROPERTY

KEY - KEY PROPERTY

MAP 6 OF 6

PREPARED BY: PAULA REED  
PRESERVATION ASSOC. INC.





MOOREFIELD HISTORIC DISTRICT  
HARDY CO. WV.

LEGEND:  
- BUILDING NUMBER  
- PHOTO NUMBER & VIEW  
C. CONTRIBUTING PROPERTY  
NC. NON-CONTRIBUTING PROPERTY  
KEY. KEY PROPERTY  
MAP 5 OF 6  
PREPARED BY: PALL REED  
PRESERVATION ASSOC., INC.

For Tax Purposes Only

Prepared by  
ASSESSMENT EQUALIZATION DIV.  
STATE TAX COMMISSIONER  
CHARLESTON, W. VA.

Property line	---
Edge of pavement or roadway	---
Corporation line	---
District line	---
County line	---

Original lot line	---
Deed lot number	(15)
Parcel or index number	99
Improvement	o
Railroad	+

Revisions			
1	6-15-73 D.W. VANNOY	9	17
2	6-22-79 100	10	18
3	July 1983 782	11	19
4		12	20
5		13	21
6		14	22
7		15	23
8		16	24

All tax maps created under the provisions of the State of West Virginia are the property of the State of West Virginia and the reproduction, copying, distribution, sale or such tax maps or any copies thereof without the written permission of the State Tax Commissioner is prohibited by law.



HARDY COUNTY  
STATE OF WEST VIRGINIA  
Office of Assessor

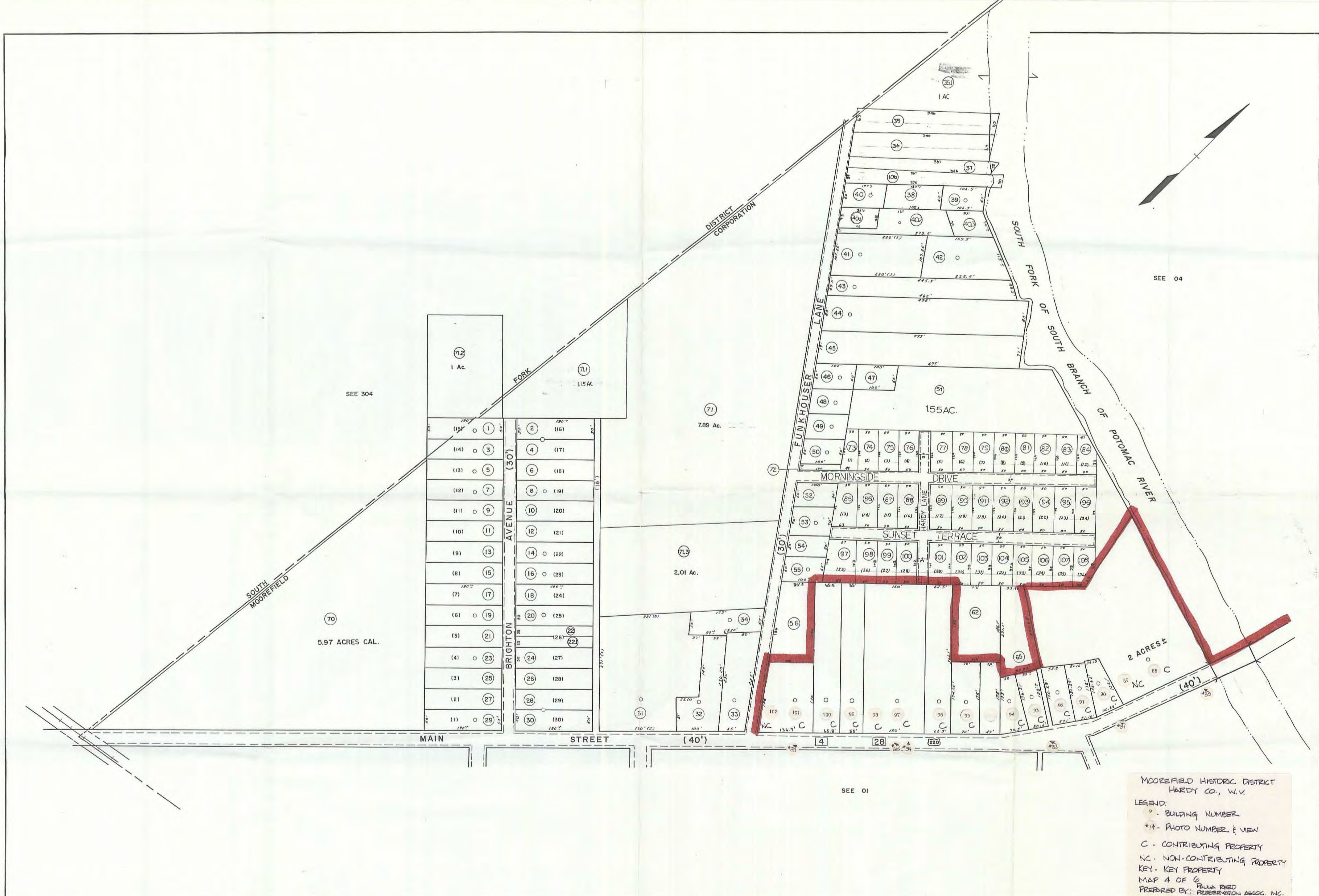
DISTRICT  
MOOREFIELD (CITY)  
SOUTH FORK CORP.

SHEET NO: 01

Date, Aerial Photography: April, 1961  
Photo No: 316-18-38

Date, Map: July, 1962  
Scale: 1" = 100'





MOOREFIELD HISTORIC DISTRICT  
HARDY CO., W.V.

LEGEND:

- - BUILDING NUMBER
- \*1\* - PHOTO NUMBER & VIEW
- C - CONTRIBUTING PROPERTY
- NC - NON-CONTRIBUTING PROPERTY
- KEY - KEY PROPERTY

MAP 4 OF 6  
PREPARED BY: PAULA REED PRESERVATION ASSOC., INC.

For Tax Purposes Only

Prepared by  
MICHAEL BAKER, JR., INC.  
Consulting Engineers  
Rochester, Pennsylvania

Legend		
Property line	Original lot line	(15)
Edge of pavement or roadway	Deed lot number	(99)
Corporation line	Parcel or index number	○
District line	Improvement	
County line	Railroad	

Revisions		
1	4-74-65	9
2	7-15-72 DBC	10
3	6-25-79 WVA	11
4	7-15-79 WVA	12
5	7-15-79 WVA	13
6		14
7		15
8		16

KEY MAP

304  
02 284  
01

HARDY COUNTY  
STATE OF WEST VIRGINIA  
Office of Assessor

DISTRICT  
MOOREFIELD (CITY)

SHEET NO: 02

Date, Aerial Photography: April, 1961 Date, Map: July, 1962  
Photo No: 318-18-38 Scale: 1" = 100'





MOOREFIELD HISTORIC DISTRICT  
HARDY CO., W.V.

LEGEND:  
 # BUILDING NUMBER  
 #/V PHOTO NUMBER & VIEW  
 C - CONTRIBUTING PROPERTY  
 NC - NON-CONTRIBUTING PROPERTY  
 KEY - KEY PROPERTY

MAP 3 OF 6  
 PREPARED BY: PAULA REED  
 PRESERVATION ASSOC., INC.

For Tax Purposes Only

Prepared by  
 MICHAEL BAKER, JR., INC.  
 Consulting Engineers  
 Rochester, Pennsylvania

Legend

Property line	---	Original lot line	---
Edge of pavement or roadway	---	Deed lot number	(15)
Corporation line	---	Parcel or index number	(16)
District line	---	Improvement	(17)
County line	---	Railroad	(18)

Revisions

1	4-26-63	9	All maps created under the provisions of
2	JUNE 15, 1973	10	reappraisal legislation
3	6-22-79	11	the property of the
4	July 1982	12	State of West Virginia
5		13	and the reproduction
6		14	of such maps or
7		15	any copies thereof without
8		16	the written permission
			of the State Tax
			Commissioner is prohibited
			by law.

KEY MAP

04	05
284	284

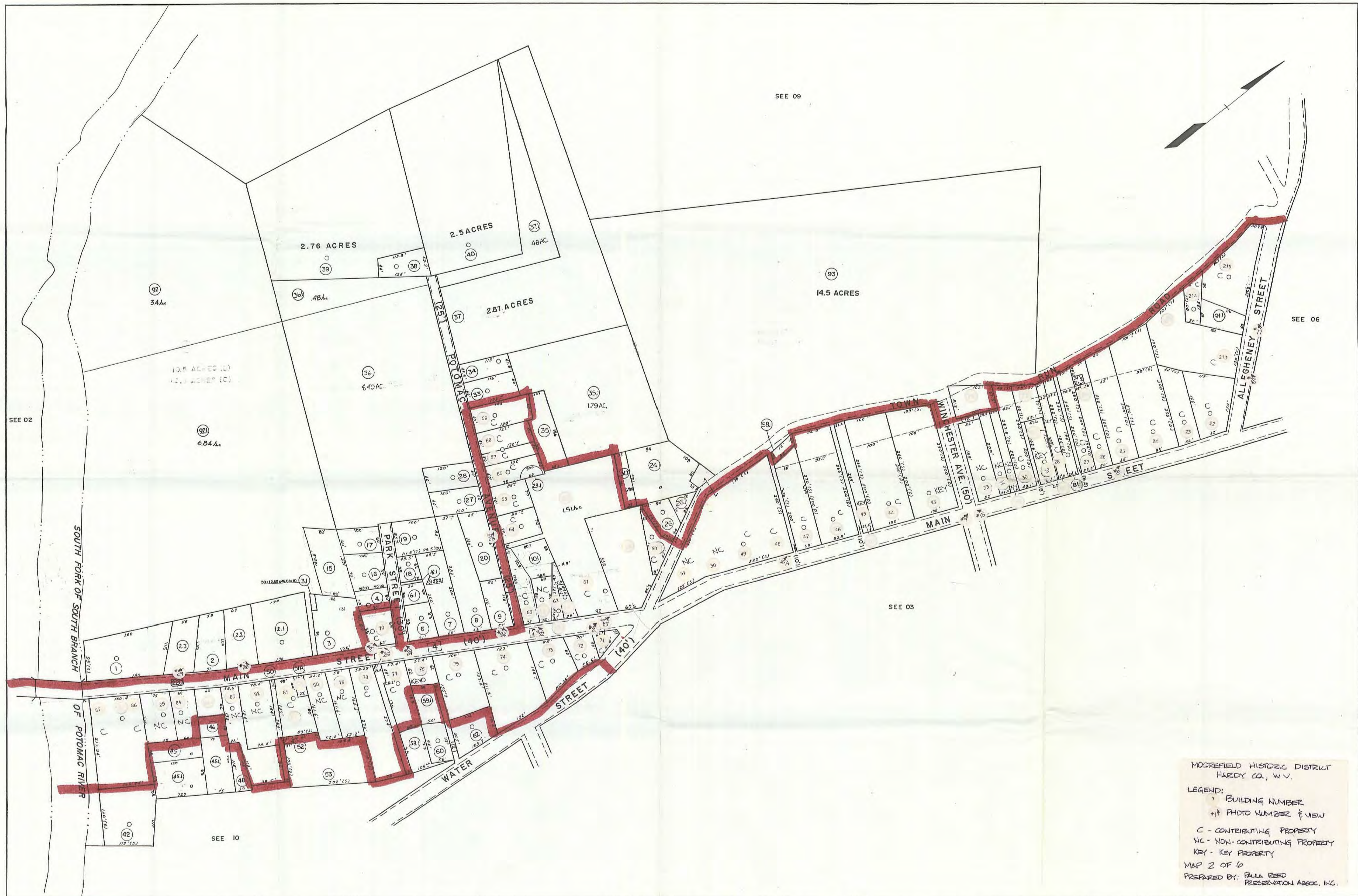
HARDY COUNTY  
 STATE OF WEST VIRGINIA  
 Office of Assessor

DISTRICT  
 MOOREFIELD (CITY)

SHEET NO: 03

Date, Aerial Photography: April, 1961  
 Photo No: 318-17-36  
 Date, Map: July, 1962  
 Scale: 1" = 100'





MOOREFIELD HISTORIC DISTRICT  
HARDY CO., W.V.

LEGEND:  
 ? BUILDING NUMBER  
 + PHOTO NUMBER & VIEW  
 C - CONTRIBUTING PROPERTY  
 NC - NON-CONTRIBUTING PROPERTY  
 KEY - KEY PROPERTY

MAP 2 OF 6  
 PREPARED BY: FALLA REED  
 PRESERVATION ASSOC., INC.

For Tax Purposes Only

Prepared by  
 MICHAEL BAKER, JR., INC.  
 Consulting Engineers  
 Rochester, Pennsylvania

Legend	
Property line	—
Edge of pavement or roadway	—
Corporation line	—
District line	—
County line	—
Original lot line	—
Deed lot number	(15)
Parcel or index number	(99)
Improvement	—
Railroad	—

Revisions	
1	4-26-63
2	JUNE 15, 1973 B.A.E.
3	6-24-79
4	10-1-83
5	10-1-83
6	10-1-83
7	10-1-83
8	10-1-83
9	10-1-83
10	10-1-83
11	10-1-83
12	10-1-83
13	10-1-83
14	10-1-83
15	10-1-83
16	10-1-83

KEY MAP

284  
 04 06  
 03

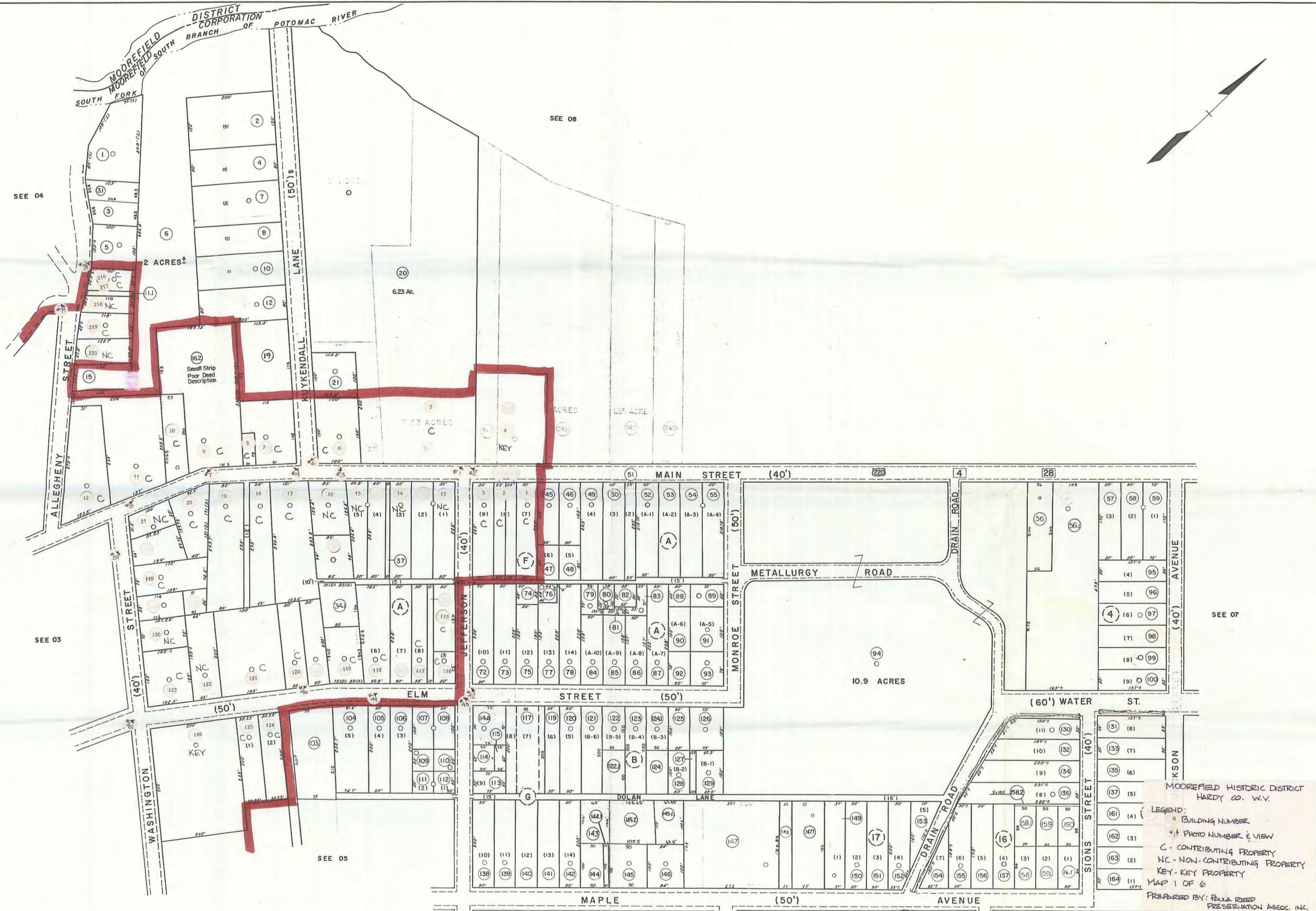
HARDY COUNTY  
 STATE OF WEST VIRGINIA  
 Office of Assessor

DISTRICT  
 MOOREFIELD (CITY)

SHEET NO: 04

Date, Aerial Photography: April, 1961 Date, Maps: July, 1962  
 Photo No: 316-17-36 Scale: 1" = 100'





For Tax Purposes Only

Prepared by  
MICHAEL BAKER, JR., INC.  
Consulting Engineers  
Rochester, Pennsylvania

Legend

Property line	—	Original lot line	---
Edge of pavement or roadway	---	Dead lot number	(15)
Corporation line	---	Parcel or index number	(99)
District line	---	Improvement	o
County line	---	Railroad	+

Revisions

1	4-26-63	9		17	
2	PLAT 18, 1973, 5065	10		18	
3	6-25-79	11		19	
4	July 1973	12		20	
5		13		21	
6		14		22	
7		15		23	
8		16		24	

KEY MAP

284
04 06 07
05

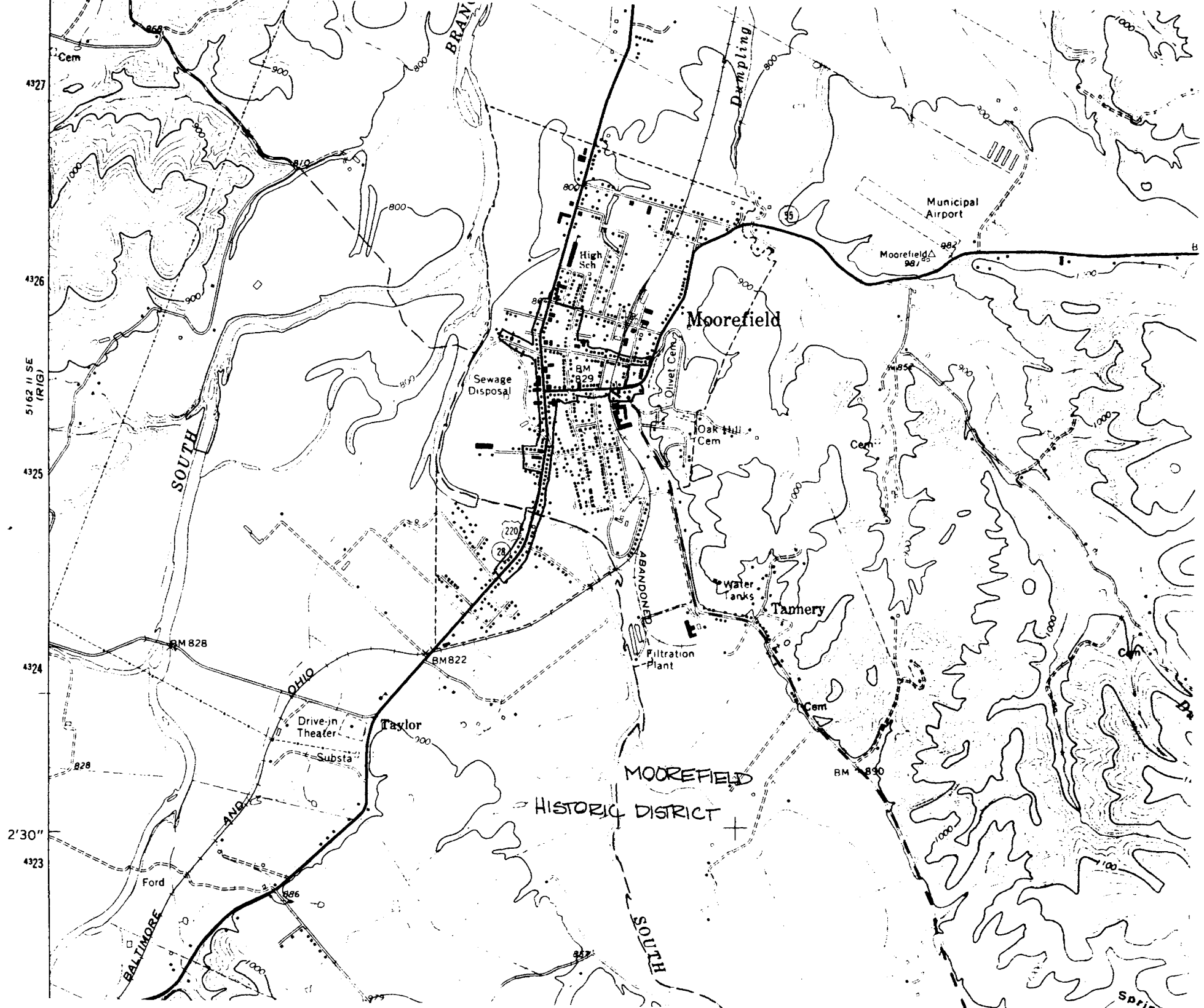
**HARDY COUNTY**  
STATE OF WEST VIRGINIA  
Office of Assessor

DISTRICT  
**MOOREFIELD (CITY)**

**SHEET NO: 06**

Date, Aerial Photography: April, 1961  
Photo No: 318-17-36  
Date, Map: July, 1962  
Scale: 1" = 100'


















- 225
1. Moorefield Historic District
  2. Moorefield, Hardy Co. WV
  3. Photo Date: June, 1984
  4. Photo by Douglass C. Reed
  5. Neg. Location: Preservation Associates, Inc., Hagerstown, MD
  6. View: North Main St. at Jefferson St.  
NE view
  7. Photo # 1
- 





1. Moorefield Historic District
2. Moorefield, Hardy Co. WV
3. Photo Date: June, 1984
4. Photo by Douglass C. Reed
5. Neg. Location: Preservation  
Associates, Inc., Hagerstown, MD
6. View: North Main St. at Jefferson St.  
SW view
7. Photo # 2





1. Moorefield Historic District  
2. Moorefield, Hardy Co. WV  
3. Photo Date: June, 1984  
4. Photo by Douglass C. Reed  
5. Neg. Location: Preservation  
Associates, Inc., Hagerstown, MD  
6. View: N. Main, N. of Washington St.  
NW view.  
7. Photo # 5





- 73
1. Moorefield Historic District
  2. Moorefield, Hardy Co. WV
  3. Photo Date: June, 1984
  4. Photo by Douglass C. Reed
  5. Neg. Location: Preservation Associates, Inc., Hagerstown, MD
  6. View: N. Main at Kuykendall Lane  
SE view
  7. Photo # 6





1. Moorefield Historic District
2. Moorefield, Hardy Co. WV
3. Photo Date: June, 1984
4. Photo by Douglass C. Reed
5. Neg. Location: Preservation  
Associates, Inc., Hagerstown, MD
6. View: North Main St, N. of Wash.  
St. SE VIEW
7. Photo # 7





1. Moorefield Historic District
2. Moorefield, Hardy Co. WV
3. Photo Date: June, 1984
4. Photo by Douglass C. Reed
5. Neg. Location: Preservation Associates, Inc., Hagerstown, MD
6. View: North Main st., S. of Allegany  
NW VIEW
7. Photo # 8



- M2
1. Moorefield Historic District
  2. Moorefield, Hardy Co. WV
  3. Photo Date: June, 1984
  4. Photo by Douglass C. Reed
  5. Neg. Location: Preservation Associates, Inc., Hagerstown, MD
  6. View: North Main & Winchester  
NW view
  7. Photo # 9
- 2





1. Moorefield Historic District  
2. Moorefield, Hardy Co. WV  
3. Photo Date: June, 1984  
4. Photo by Douglass C. Reed  
5. Neg. Location: Preservation  
Associates, Inc., Hagerstown, MD  
6. View: North Main & Allegany Sts.  
SE view  
7. Photo # 10







1. Moorefield Historic District
2. Moorefield, Hardy Co. WV
3. Photo Date: June, 1984
4. Photo by Douglass C. Reed
5. Neg. Location: Preservation Associates, Inc., Hagerstown, MD
6. View: North Main, S. of Allegany  
SE view
7. Photo # 11



1. Moorefield Historic District
2. Moorefield, Hardy Co. WV
3. Photo Date: June, 1984
4. Photo by Douglass C. Reed
5. Neg. Location: Preservation Associates, Inc., Hagerstown, MD
6. View: N. Main & Winchester  
NE View
7. Photo #12





1. Moorefield Historic District
2. Moorefield, Hardy Co. WV
3. Photo Date: June, 1984
4. Photo by Douglass C. Reed
5. Neg. Location: Preservation Associates, Inc., Hagerstown, MD
6. View: S. Main & Winchester  
SW view
7. Photo # 13







1. Moorefield Historic District  
2. Moorefield, Hardy Co. WV  
3. Photo Date: June, 1984  
4. Photo by Douglass C. Reed  
5. Neg. Location: Preservation  
Associates, Inc., Hagerstown, MD  
6. View: S. Main, S. of Winchester  
NW VIEW  
7. Photo # 14



- 112
1. Moorefield Historic District
  2. Moorefield, Hardy Co. WV
  3. Photo Date: June, 1984
  4. Photo by Douglass C. Reed
  5. Neg. Location: Preservation Associates, Inc., Hagerstown, MD
  6. View: S. Main at Town Run Rd.  
NW view
  7. Photo # 15





1. Moorefield Historic District
2. Moorefield, Hardy Co. WV
3. Photo Date: June, 1984
4. Photo by Douglass C. Reed
5. Neg. Location: Preservation  
Associates, Inc., Hagerstown, MD
6. View: S. Main at Winchester  
SE view
7. Photo # 16





1. Moorefield Historic District  
2. Moorefield, Hardy Co. WV  
3. Photo Date: June, 1984  
4. Photo by Douglass C. Reed  
5. Neg. Location: Preservation  
Associates, Inc., Hagerstown, MD  
6. View: S. Main, South of Winchester  
NE view  
7. Photo # 18





1. Moorefield Historic District  
2. Moorefield, Hardy Co. WV  
3. Photo Date: June, 1984  
4. Photo by Douglass C. Reed  
5. Neg. Location: Preservation  
Associates, Inc., Hagerstown, MD  
6. View: S. Main, N. of Town Run Rd.  
NE view  
7. Photo # 19





1. Moorefield Historic District
2. Moorefield, Hardy Co. WV
3. Photo Date: June, 1984
4. Photo by Douglass C. Reed
5. Neg. Location: Preservation Associates, Inc., Hagerstown, MD
6. View: S. Main & TOWN RUN Rd.  
NE VIEW
7. Photo #20







1. Moorefield Historic District  
2. Moorefield, Hardy Co. WV  
3. Photo Date: June, 1984  
4. Photo by Douglass C. Reed  
5. Neg. Location: Preservation  
Associates, Inc., Hagerstown, MD  
6. View: South Main & Town Run Rd.  
W. View  
7. Photo #21





- 221
1. Moorefield Historic District
  2. Moorefield, Hardy Co. WV
  3. Photo Date: June, 1984
  4. Photo by Douglass C. Reed
  5. Neg. Location: Preservation Associates, Inc., Hagerstown, MD
  6. View: S. Main and Potomac Ave.
  7. Photo # <sup>SW view</sup> 22





- 371
1. Moorefield Historic District
  2. Moorefield, Hardy Co. WV
  3. Photo Date: June, 1984
  4. Photo by Douglass C. Reed
  5. Neg. Location: Preservation Associates, Inc., Hagerstown, MD
  6. View: Potomac Ave.  
NW VIEW
  7. Photo # 23





1. Moorefield Historic District  
2. Moorefield, Hardy Co. WV  
3. Photo Date: June, 1984  
4. Photo by Douglass C. Reed  
5. Neg. Location: Preservation  
Associates, Inc., Hagerstown, MD  
6. View: S. Main & Park St.  
SW VIEW  
7. Photo #24







1. Moorefield Historic District
2. Moorefield, Hardy Co. WV
3. Photo Date: June, 1984
4. Photo by Douglass C. Reed
5. Neg. Location: Preservation Associates, Inc., Hagerstown, MD
6. View: S. Main Wn. Park St.  
SW view
7. Photo # 25





- 31
1. Moorefield Historic District
  2. Moorefield, Hardy Co. WV
  3. Photo Date: June, 1984
  4. Photo by Douglass C. Reed
  5. Neg. Location: Preservation Associates, Inc., Hagerstown, MD
  6. View: S. Main & Potomac Ave.  
NE VIEW
  7. Photo # 26





- ml
1. Moorefield Historic District
  2. Moorefield, Hardy Co. WV
  3. Photo Date: June, 1984
  4. Photo by Douglass C. Reed
  5. Neg. Location: Preservation Associates, Inc., Hagerstown, MD
  6. View: S. Main & Park St.  
NE View
  7. Photo # 27





1. Moorefield Historic District  
2. Moorefield, Hardy Co. WV  
3. Photo Date: June, 1984  
4. Photo by Douglass C. Reed  
5. Neg. Location: Preservation  
Associates, Inc., Hagerstown, MD  
6. View: S. Main, North of River  
NE VIEW  
7. Photo # 28







- 21
1. Moorefield Historic District
  2. Moorefield, Hardy Co. WV
  3. Photo Date: June, 1984
  4. Photo by Douglass C. Reed
  5. Neg. Location: Preservation Associates, Inc., Hagerstown, MD
  6. View: S Main, North of River  
E. view
  7. Photo # 29





1. Moorefield Historic District
2. Moorefield, Hardy Co. WV
3. Photo Date: June, 1984
4. Photo by Douglass C. Reed
5. Neg. Location: Preservation  
Associates, Inc., Hagerstown, MD
6. View: S. Main St., S. of River  
SW view
7. Photo # 30





1. Moorefield Historic District
2. Moorefield, Hardy Co. WV
3. Photo Date: June, 1984
4. Photo by Douglass C. Reed
5. Neg. Location: Preservation Associates, Inc., Hagerstown, MD
6. View: S. Main St., S. of River  
SW VIEW
7. Photo # 31





1. Moorefield Historic District
2. Moorefield, Hardy Co. WV
3. Photo Date: June, 1984
4. Photo by Douglass C. Reed
5. Neg. Location: Preservation Associates, Inc., Hagerstown, MD
6. View: S. Main St., S. of Rohnbaugh Ave  
SW view
7. Photo # 32





- m1
1. Moorefield Historic District
  2. Moorefield, Hardy Co. WV
  3. Photo Date: June, 1984
  4. Photo by Douglass C. Reed
  5. Neg. Location: Preservation Associates, Inc., Hagerstown, MD
  6. View: S. Main St., N. of Bear Lane  
NW view
  7. Photo # 33





1. Moorefield Historic District
2. Moorefield, Hardy Co. WV
3. Photo Date: June, 1984
4. Photo by Douglass C. Reed
5. Neg. Location: Preservation  
Associates, Inc., Hagerstown, MD
6. View: S. Main St., N. of Bean Lane  
W. View
7. Photo # 34





- 31
1. Moorefield Historic District
  2. Moorefield, Hardy Co. WV
  3. Photo Date: June, 1984
  4. Photo by Douglass C. Reed
  5. Neg. Location: Preservation Associates, Inc., Hagerstown, MD
  6. View: S. Main St., N. of Beau Lane  
S.W. view
  7. Photo # 35





- M1  
20
1. Moorefield Historic District
  2. Moorefield, Hardy Co. WV
  3. Photo Date: June, 1984
  4. Photo by Douglass C. Reed
  5. Neg. Location: Preservation Associates, Inc., Hagerstown, MD
  6. View: S. Main St., S. of River  
SE view
  7. Photo # 36





1. Moorefield Historic District
2. Moorefield, Hardy Co. WV
3. Photo Date: June, 1984
4. Photo by Douglass C. Reed
5. Neg. Location: Preservation  
Associates, Inc., Hagerstown, MD
6. View: S. Main at Rohrbaugh Ave.  
NE view
7. Photo # 37





1. Moorefield Historic District
2. Moorefield, Hardy Co. WV
3. Photo Date: June, 1984
4. Photo by Douglass C. Reed
5. Neg. Location: Preservation Associates, Inc., Hagerstown, MD
6. View: S Main, S. of Rohrbaugh Ave.  
NE view
7. Photo # 38





- 71
1. Moorefield Historic District
  2. Moorefield, Hardy Co. WV
  3. Photo Date: June, 1984
  4. Photo by Douglass C. Reed
  5. Neg. Location: Preservation Associates, Inc., Hagerstown, MD
  6. View: S. Main St., S. of Bohrbach Ave.  
SE VIEW
  7. Photo # 39





1. Moorefield Historic District  
2. Moorefield, Hardy Co. WV  
3. Photo Date: June, 1984  
4. Photo by Douglass C. Reed  
5. Neg. Location: Preservation  
Associates, Inc., Hagerstown, MD  
6. View: S. Main St., S of Rohrbaugh Ave  
NE view  
7. Photo # 40





- 31
1. Moorefield Historic District
  2. Moorefield, Hardy Co. WV
  3. Photo Date: June, 1984
  4. Photo by Douglass C. Reed
  5. Neg. Location: Preservation Associates, Inc., Hagerstown, MD
  6. View: S. Main St., N. of Bean Lane  
SE view
  7. Photo #41





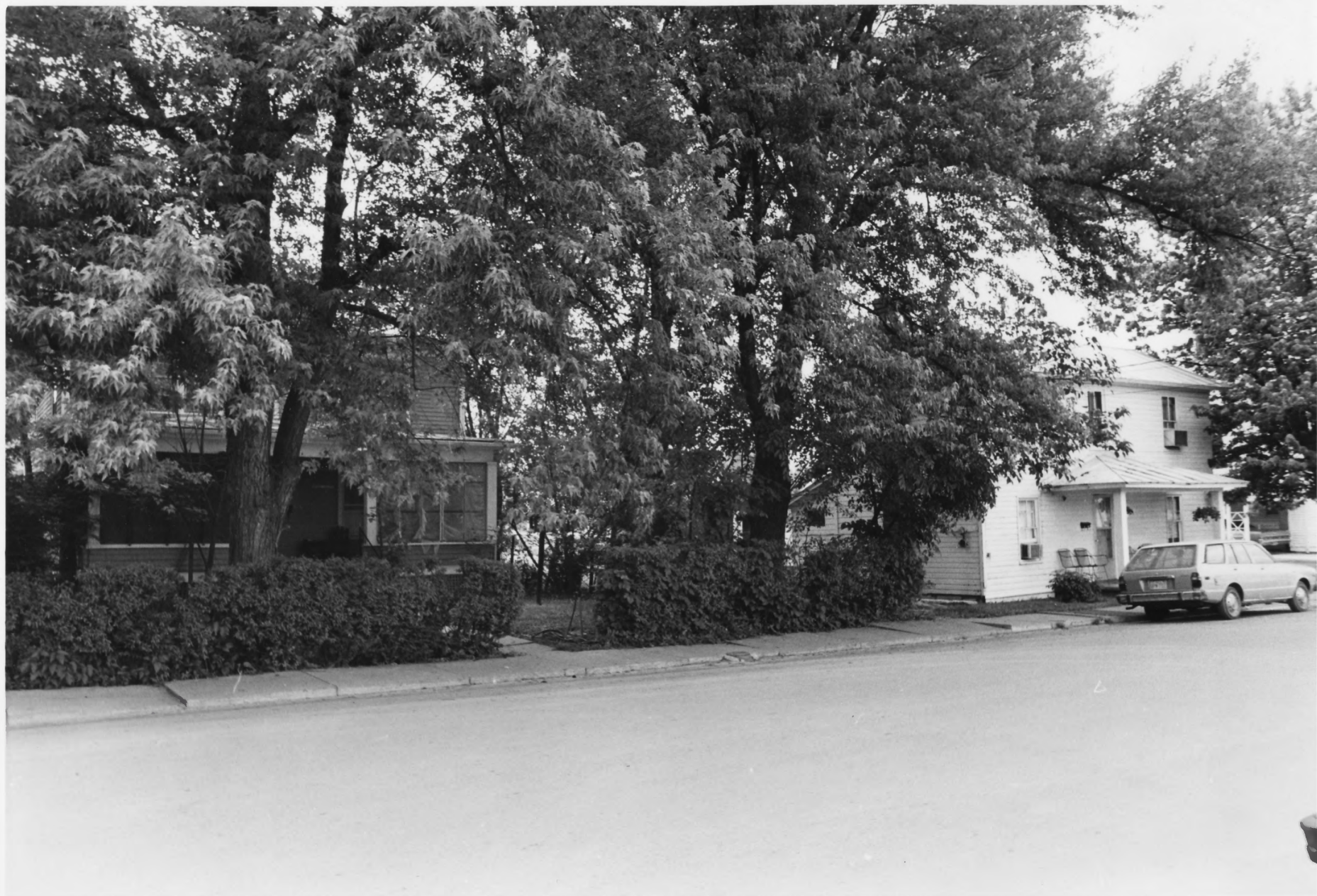
- 22
1. Moorefield Historic District
  2. Moorefield, Hardy Co. WV
  3. Photo Date: June, 1984
  4. Photo by Douglass C. Reed
  5. Neg. Location: Preservation Associates, Inc., Hagerstown, MD
  6. View: Elm and Jefferson Sts.  
SW view
  7. Photo # 42
- M





- 23
1. Moorefield Historic District
  2. Moorefield, Hardy Co. WV
  3. Photo Date: June, 1984
  4. Photo by Douglass C. Reed
  5. Neg. Location: Preservation Associates, Inc., Hagerstown, MD
  6. View: Elm and Jefferson Sts.  
SW view
  7. Photo #43
- M







- 3
1. Moorefield Historic District
  2. Moorefield, Hardy Co. WV
  3. Photo Date: June, 1984
  4. Photo by Douglass C. Reed
  5. Neg. Location: Preservation Associates, Inc., Hagerstown, MD
  6. View: Elm St., S. of Jefferson  
NW view
  7. Photo #44
- 7





1. Moorefield Historic District
2. Moorefield, Hardy Co. WV
3. Photo Date: June, 1984
4. Photo by Douglass C. Reed
5. Neg. Location: Preservation Associates, Inc., Hagerstown, MD
6. View: Elm & Washington Sts.  
NW view
7. Photo #45







- 203
1. Moorefield Historic District
  2. Moorefield, Hardy Co. WV
  3. Photo Date: June, 1984
  4. Photo by Douglass C. Reed
  5. Neg. Location: Preservation Associates, Inc., Hagerstown, MD
  6. View: Elm St. S. of Jefferson  
SE view
  7. Photo # 46
- M





1. Moorefield Historic District  
2. Moorefield, Hardy Co. WV  
3. Photo Date: June, 1984  
4. Photo by Douglass C. Reed  
5. Neg. Location: Preservation  
Associates, Inc., Hagerstown, MD  
6. View: Elm St., S. of Washington St.  
NW view  
7. Photo # 47





- 73
1. Moorefield Historic District
  2. Moorefield, Hardy Co. WV
  3. Photo Date: June, 1984
  4. Photo by Douglass C. Reed
  5. Neg. Location: Preservation Associates, Inc., Hagerstown, MD
  6. View: Elm St., S. of Washington St.  
NW view
  7. Photo # 48
- 7





- 32
1. Moorefield Historic District
  2. Moorefield, Hardy Co. WV
  3. Photo Date: June, 1984
  4. Photo by Douglass C. Reed
  5. Neg. Location: Preservation Associates, Inc., Hagerstown, MD
  6. View: Elm St. & Winchester Ave.  
NW view
  7. Photo # 49
- 2





1. Moorefield Historic District
2. Moorefield, Hardy Co. WV
3. Photo Date: June, 1984
4. Photo by Douglass C. Reed
5. Neg. Location: Preservation  
Associates, Inc., Hagerstown, MD
6. View: Elm & Washington Sts.  
SE view
7. Photo # 50





- 23
1. Moorefield Historic District
  2. Moorefield, Hardy Co. WV
  3. Photo Date: June, 1984
  4. Photo by Douglass C. Reed
  5. Neg. Location: Preservation Associates, Inc., Hagerstown, MD
  6. View: Elm St., S. of Washington St.  
NE view
  7. Photo # 51
- 3





1. Moorefield Historic District
2. Moorefield, Hardy Co. WV
3. Photo Date: June, 1984
4. Photo by Douglass C. Reed
5. Neg. Location: Preservation Associates, Inc., Hagerstown, MD
6. View: Elm St. & Winchester Ave.  
NE VIEW
7. Photo # 52





- 372
1. Moorefield Historic District
  2. Moorefield, Hardy Co. WV
  3. Photo Date: June, 1984
  4. Photo by Douglass C. Reed
  5. Neg. Location: Preservation Associates, Inc., Hagerstown, MD
  6. View: Elm St. & Winchester Ave.  
NE view
  7. Photo # 53
- 2





1. Moorefield Historic District  
2. Moorefield, Hardy Co. WV  
3. Photo Date: June, 1984  
4. Photo by Douglass C. Reed  
5. Neg. Location: Preservation  
Associates, Inc., Hagerstown, MD  
6. View: Elm St. & Winchester Ave.  
SW view  
7. Photo #54





1. Moorefield Historic District
2. Moorefield, Hardy Co. WV
3. Photo Date: June, 1984
4. Photo by Douglass C. Reed
5. Neg. Location: Preservation Associates, Inc., Hagerstown, MD
6. View: Elm St., S. of Winchester Ave.
7. Photo # <sup>SE view</sup> 56





- 34
1. Moorefield Historic District
  2. Moorefield, Hardy Co. WV
  3. Photo Date: June, 1984
  4. Photo by Douglass C. Reed
  5. Neg. Location: Preservation Associates, Inc., Hagerstown, MD
  6. View: Washington St., E of Main St.  
NE view.
  7. Photo # 57
- 4





1. Moorefield Historic District  
2. Moorefield, Hardy Co. WV  
3. Photo Date: June, 1984  
4. Photo by Douglass C. Reed  
5. Neg. Location: Preservation  
Associates, Inc., Hagerstown, MD  
6. View: Washington St., E of W. Main  
SE view  
7. Photo # 58





- 3
1. Moorefield Historic District
  2. Moorefield, Hardy Co. WV
  3. Photo Date: June, 1984
  4. Photo by Douglass C. Reed
  5. Neg. Location: Preservation Associates, Inc., Hagerstown, MD
  6. View: Washington St., E. of Elm St.  
N view
  7. Photo # 59
- M





- 74
1. Moorefield Historic District
  2. Moorefield, Hardy Co. WV
  3. Photo Date: June, 1984
  4. Photo by Douglass C. Reed
  5. Neg. Location: Preservation Associates, Inc., Hagerstown, MD
  6. View: Washington St. & Rosemary  
NW view
  7. Photo # 60
- 5





1. Moorefield Historic District  
2. Moorefield, Hardy Co. WV  
3. Photo Date: June, 1984  
4. Photo by Douglass C. Reed  
5. Neg. Location: Preservation  
Associates, Inc., Hagerstown, MD  
6. View: Washington, E. of Elm  
S.E. view  
7. Photo # 61





- 23
1. Moorefield Historic District
  2. Moorefield, Hardy Co. WV
  3. Photo Date: June, 1984
  4. Photo by Douglass C. Reed
  5. Neg. Location: Preservation Associates, Inc., Hagerstown, MD
  6. View: Washington & Rosemary  
S.W. view
  7. Photo # 62
- M





1. Moorefield Historic District
2. Moorefield, Hardy Co. WV
3. Photo Date: June, 1984
4. Photo by Douglass C. Reed
5. Neg. Location: Preservation Associates, Inc., Hagerstown, MD
6. View: Washington St. at Railroad  
N.E. view
7. Photo # 63





- 23
1. Moorefield Historic District
  2. Moorefield, Hardy Co. WV *Eastwood*
  3. Photo Date: June, 1984
  4. Photo by Douglass C. Reed
  5. Neg. Location: Preservation Associates, Inc., Hagerstown, MD
  6. View: *Washington St. at Railroad*  
*S.E. view*
  7. Photo # *641*





1. Moorefield Historic District  
2. Moorefield, Hardy Co. WV  
3. Photo Date: June, 1984  
4. Photo by Douglass C. Reed  
5. Neg. Location: Preservation  
Associates, Inc., Hagerstown, MD  
6. View: Washington St. & Clay Ave.  
S.W. view  
7. Photo # 65





- 24
1. Moorefield Historic District
  2. Moorefield, Hardy Co. WV
  3. Photo Date: June, 1984
  4. Photo by Douglass C. Reed
  5. Neg. Location: Preservation Associates, Inc., Hagerstown, MD
  6. View: Washington St. & Clay Ave.  
S.W. view
  7. Photo # 66
- +





- 24
1. Moorefield Historic District
  2. Moorefield, Hardy Co. WV
  3. Photo Date: June, 1984 *Clay Ave*
  4. Photo by Douglass C. Reed
  5. Neg. Location: Preservation Associates, Inc., Hagerstown, MD
  6. View: Washington St. at Clay Ave.  
N.E. view
  7. Photo # 67





- 224
1. Moorefield Historic District
  2. Moorefield, Hardy Co. WV
  3. Photo Date: June, 1984
  4. Photo by Douglass C. Reed
  5. Neg. Location: Preservation Associates, Inc., Hagerstown, MD
  6. View: Washington St. at Winchester Ave. N. view
  7. Photo # 68





1. Moorefield Historic District
2. Moorefield, Hardy Co. WV
3. Photo Date: June, 1984
4. Photo by Douglass C. Reed
5. Neg. Location: Preservation Associates, Inc., Hagerstown, MD
6. View: Clay Ave. between Washington  
E. Winchester W. view
7. Photo # 69





1. Moorefield Historic District  
2. Moorefield, Hardy Co. WV  
3. Photo Date: June, 1984  
4. Photo by Douglass C. Reed  
5. Neg. Location: Preservation  
Associates, Inc., Hagerstown, MD  
6. View: Winchester Ave. at Chipley La.  
NE view  
7. Photo # 70





1. Moorefield Historic District
2. Moorefield, Hardy Co. WV
3. Photo Date: June, 1984
4. Photo by Douglass C. Reed
5. Neg. Location: Preservation  
Associates, Inc., Hagerstown, MD
6. View: Winchester Ave., So. of Chipley La.  
S.E. view
7. Photo # 71







- 34
1. Moorefield Historic District
  2. Moorefield, Hardy Co. WV
  3. Photo Date: June, 1984
  4. Photo by Douglass C. Reed
  5. Neg. Location: Preservation Associates, Inc., Hagerstown, MD
  6. View: WINCHESTER AVE. at CLAY AVE.  
N. VIEW
  7. Photo # 72
- 4





1. Moorefield Historic District
2. Moorefield, Hardy Co. WV
3. Photo Date: June, 1984
4. Photo by Douglass C. Reed
5. Neg. Location: Preservation Associates, Inc., Hagerstown, MD
6. View: Winchester and Clay Aves.  
S. views
7. Photo # 741





- 74
1. Moorefield Historic District
  2. Moorefield, Hardy Co. WV
  3. Photo Date: June, 1984
  4. Photo by Douglass C. Reed
  5. Neg. Location: Preservation Associates, Inc., Hagerstown, MD
  6. View: South Fork Rd., East of Railroad  
S.E. view
  7. Photo # 75
- 4





1. Moorefield Historic District
2. Moorefield, Hardy Co. WV
3. Photo Date: June, 1984
4. Photo by Douglass C. Reed
5. Neg. Location: Preservation Associates, Inc., Hagerstown, MD
6. View: Allegany St., W. of N. Main  
S.W. view
7. Photo # 76





1. Moorefield Historic District  
2. Moorefield, Hardy Co. WV  
3. Photo Date: June, 1984  
4. Photo by Douglass C. Reed  
5. Neg. Location: Preservation  
Associates, Inc., Hagerstown, MD  
6. View: Allegany St., N. of N. Main  
S.W. view  
7. Photo # 77





- 34
1. Moorefield Historic District
  2. Moorefield, Hardy Co. WV
  3. Photo Date: June, 1984
  4. Photo by Douglass C. Reed
  5. Neg. Location: Preservation Associates, Inc., Hagerstown, MD
  6. View: Allegheny St. at Town Run Rd.  
N.E. view
  7. Photo # 78





1. Moorefield Historic District
2. Moorefield, Hardy Co., WV
3. Photo Date: June, 1984
4. Photo by Douglass Reed
5. Neg. Location: Preservation Associates, Inc., Hagerstown, MD
6. View: *Allegany St at Town Run Rd.*  
NE VIEW.
7. Photo # *79*