

United States Department of the Interior National Park Service
NATIONAL REGISTER OF HISTORIC PLACES REGISTRATION
FORM

1. Name of Property

historic name: Martinsburg Mining, Manufacturing & Improvement Co. Historic District
other name/site number: MMM&I Historic District; WVSHPO #s 00001-00290

2. Location

street & number: N. Y., Va., W. Va., Md., Fla., Faulkner not for publication: N/A
city/town: Martinsburg vicinity: _____
state: WV county: Berkeley code: 003 zip code: 25401

3. State/Federal Agency Certification

As the designated authority under the National Historic preservation Act, as amended, I hereby certify that this nomination request for determination of eligibility meets the documentation standards for registering properties in the National Register of Historic Places and meets the procedural and professional requirements set forth in 36 CFR Part 60. In my opinion, the property meets does not meet the National Register Criteria. I recommend that this property be considered significant nationally statewide locally. (See continuation sheet.)

Susan M. Perce 10/29/02
Signature of Certifying Official Date

State or Federal Agency and Bureau Date

In my opinion, the property meets does not meet the National Register criteria (See continuation sheet for additional comments.)

Signature of Certifying Official/Title Date

State or Federal Agency and Bureau Date

Martinsburg, Mining, Manufacturing &
Name of Property

Berkeley WV
County and State

4. National Park Service Certification

I, hereby certify that this property is:	Signature of Keeper	Date of Action
<input checked="" type="checkbox"/> entered in the National Register	_____	_____
___ See continuation sheet		
___ determined eligible for the National Register	_____	_____
___ See continuation sheet		
___ determined not eligible for the National Register	_____	_____
___ removed from the National Register	_____	_____
___ other (explain):	_____	_____

5. Classification

Ownership of Property:

(Check as many boxes as apply)

- private
- ___ public-local
- ___ public-State
- ___ public-Federal

Category of property

(Check only one box)

- ___ building(s)
- district
- ___ site
- ___ structure
- ___ object

Number of Resources within Property

(Do not include previously listed resources in the count.)

Contributing	Noncontributing	
289 _____	21 _____	buildings
0 _____	0 _____	sites
0 _____	0 _____	structures
0 _____	0 _____	objects
289 _____	21 _____	TOTAL

Name of related multiple property listing N/A

(Enter "N/A" if property is not part of a multiple property listing.)

Number of contributing resources previously in the listed National Register 0

Martinsburg, Mining, Manufacturing &

Berkeley WV

Name of Property

County and State

6. Function or Use

Historic Functions

Domestic: Single Dwelling

Domestic: Multiple Dwelling

Domestic: Secondary Structure

Commercial: Business

Religion: Religious facility

Current Functions

Domestic: Single Dwelling

Domestic: Multiple Dwelling

Domestic: Secondary Structure

Commercial: Business

Religion: Religious facility

7. Description

Architectural Classification

Late Victorian: Queen Anne. Late 19th and 20th

Century Revivals: Colonial Revival; Tudor

Revival. Late 19th and 20th Century American:

Bungalow/Craftsman; Other

Materials

Foundation Brick, Stone, Concrete

Walls Wood, Brick, Block

Roof Metal, Composition Shingle

Other

Narrative Description

(See continuation on sheets.)

8. Statement of Significance

Applicable National Register Criteria

(Mark "X" in one or more boxes for the criteria qualifying the property for National Register listing.)

A Property is associated with events that have made a significant contribution to the broad patterns of our history.

B Property is associated with the lives of persons significant in our past.

C Property embodies the distinctive characteristics of a type, period, or method of construction or represents the work of a master, or possesses high artistic values, or represents a significant and distinguishable entity whose components lack individual distinction.

D Property has yielded or is likely to yield, information important in prehistory or history.

Martinsburg. Mining. Manufacturing &
Name of Property

Berkeley WV
County and State

Criteria Considerations

(Mark "X" in all the boxes that apply.)

Property is:

- A** owned by a religious institution or used for religious purposes.
- B** removed from its original location.
- C** a birthplace or grave.
- D** a cemetery.
- E** a reconstructed building, object, or structure.
- F** a commemorative property.
- G** less than 50 years of age or achieved significance within the past 50 years.

Areas of Significance

Community Planning and Development

Architecture

Period of Significance

1891 (Community Planning and Development)

1891-1952 (Architecture)

Significant Dates

1891 _____

Significant Person

(Complete if criterion B is marked above)

Cultural Affiliation

N/A

Architect/Builder

Narrative Statement of Significance

(See continuation sheets.)

See Continuation Sheet

Martinsburg, Mining, Manufacturing &
Name of Property

Berkeley WV
County and State

9. Major Bibliographical References

Bibliographical

(Cite the books, articles, and other sources used in preparing this form on one or more continuation sheets.)

Previous documentation on file (NPS):

- preliminary determination of individual listing (36 CFR 67) has been requested.
- previously listed in the National Register
- previously determined eligible by the National Register
- designated a National Historic Landmark
- recorded by Historic American Buildings Survey # _____
- recorded by Historic American Engineering Record # _____

Primary location of additional data:

- State Historic Preservation Office
- Other State Agency
- Federal Agency
- Local government
- University
- Other

Name of Repository Berkeley County Historic Landmarks Commission

10. Geographical Data

Acreege of Property 64 acres

UTM References (Place additional UTM references on a continuation sheet.)

Quad Map Name: Martinsburg, WV

A _____
Zone Easting Northing

B _____
Zone Easting Northing

C _____
Zone Easting Northing

D _____
Zone Easting Northing

see continuation sheet

Verbal Boundary Description
(See continuation sheet.)

Boundary Justification
(See continuation sheet.)

Martinsburg, Mining, Manufacturing &

Berkeley WV

Name of Property

County and State

11. Form Prepared By

Name/Title: Geoffrey B. Henry and Jared N. Tuk, Architectural Historians

Organization: GAI Consultants, Inc. Date: April 20, 2002

Street & Number: 3412 Chesterfield Avenue Telephone: 304-926-8100

City or Town: Charleston State: WV Zip: 25304

Property Owner

(Complete this item at the request of SHPO or FPO.)

Name: Various

Street & Number: See Section 7 Telephone: _____

City or Town: _____ State: _____ Zip: _____

ARCHITECTURAL DESCRIPTION

Location and Boundaries

The Martinsburg Mining, Manufacturing, and Improvement (MMM&I) Historic District is located within the corporate limits of the City of Martinsburg, county seat of Berkeley County, West Virginia. Martinsburg and Berkeley County are located in the eastern panhandle region of West Virginia, approximately 12 miles south of the Maryland/West Virginia state line, and approximately 10 miles north of the Virginia/West Virginia state line.

The MMM&I Historic District is an urban district containing 19 partial or whole city blocks, comprising approximately 64 acres. The district is bounded on the *north* by the south side of Addition Street; on the *east* by the west side of South Raleigh Street; on the *south* by a line running west from the intersection of Bowers Street and South Raleigh Street to the rear lot lines of properties on the west side of West Virginia Avenue, then north along an alley to the rear lot lines of properties on the south side of Berry Street, then west along the rear lot lines of properties on the south side of Berry Street to the west side of New York Avenue, then north to the north side of Berry Street, then west to the east side of Maryland Avenue, then south to the north side of Buxton Street and then west to rear lot lines on the west side of Florida and Faulkner Avenues. The rear lot lines of the Florida and Faulkner Avenues define the *west* boundary of the district.

In addition, the MMM&I Historic District adjoins and is bounded on the north, northwest, and west by the Boom Town Historic District. The Boom Town Historic District is listed in the National Register of Historic Places as part of the Berkeley County Multiple Resource Area.

The MMM&I Historic District contains 289 contributing resources and 21 non-contributing resources dating from between 1891 and 1952. The contributing resources are distributed as follows: 36 contributing resources on Faulkner Avenue, 21 contributing resources on Maryland Avenue, 7 contributing resources on Florida Avenue, 51 contributing resources on South Raleigh Street, 41 contributing resources on New York Avenue, 54 contributing resources on West Virginia Avenue, 50 contributing resources on Virginia Avenue, 4 contributing resources on Berry Street, 4 contributing resources on Bowers Street, 12 contributing resources on Buxton Street, 5 contributing resources on Baxter Street, and 4 contributing resources on Addition Street. The 21 non-contributing resources post date the 1891-1952 period of significance.

Street Plan

The MMM&I Historic District is a residential neighborhood laid out in 1891 by the Martinsburg Mining, Manufacturing and Improvement (MMM&I) Company of Martinsburg. The street plan consists of a uniform grid pattern on moderately hilly topography. The topography slopes downward from south to north, with its lowest point at the north end of the district. The street plan contains five east-west running streets

(Bowers, Berry, Buxton, Baker, and Addition Streets), six north-south running avenues (South Florida, South Maryland, South New York, South West Virginia, South Virginia, and South Raleigh Avenues), and Faulkner Avenue, which runs at a 45 degree angle at the west end of the district. The streets and avenues are 60 feet wide. Most lots measure 40 feet wide and 144 feet long. The back sides of all lots are serviced by narrow 10-foot-wide north-south running alleys (mostly unpaved).

Architectural Characteristics

The architecture of the MMM&I Historic District consists of detached and single-family houses, duplex housing, and multi-unit housing, along with such secondary buildings as garages and sheds. The residential buildings face to the street and have uniform setbacks, although the setback lengths vary from block to block. Lots are demarcated by stone or concrete walls, hedges, or curbs along the front, and on the sides by driveways, walls, vegetation, or changes in elevation.

Building materials include wood frame (187 resources), brick or brick veneer (64 resources), and concrete block (38 resources). Frame buildings either retain their original cladding of weatherboard or German siding, or have been altered with aluminum or vinyl siding, asbestos or asphalt shingles, or covered with stucco. Brick buildings use either red or yellow brick, often trimmed with wood or concrete. Concrete block buildings have either smooth or rusticated finishes. Many frame and brick houses in the district possess rusticated concrete block foundations. Roof materials include metal, slate, asphalt roll, asbestos shingle, and composition shingle.

The MMM&I Historic District retains its original street plan, scale, and feeling and maintains a high degree of architectural integrity. Individual buildings in the district have been altered by the addition of later siding, by enclosing or altering original porches, and by the replacement of original window sash and doors.

Buildings in the MMM&I Historic District encompass several architectural styles popular during the neighborhood's most intense period of development between 1891 and 1935. These include the American Four Square, Bungalow/Craftsman, Colonial Revival, Dutch Colonial, and Tudor Revival. Vernacular buildings, which exhibit no identifiable stylistic features are also well represented in the MMM&I Historic District.

ARCHITECTURAL DESCRIPTION BY STREET (ALPHABETICAL)

Addition, Bowers, Buxton, Berry and Baxter Streets are long cross streets that contain relatively few buildings. An exception is the 600 block of Buxton Street, which contains a row of tightly spaced 2-story frame houses on the south side of the street.

Faulkner Avenue. The 700 block of this street contains both detached houses and duplexes, constructed of brick, frame, and concrete block, either 1½ or 2 stories high. 741-743 Faulkner Avenue is an example of concrete block duplex with a porch with

concrete Corinthian columns. Styles represented include Bungalow and American Four Square, as well as vernacular dwellings. The 600 block contains 2- and 2 ½-story frame brick, and concrete block houses in vernacular and Colonial Revival styles. The 500 block has a diverse collection of 2 ½-story Queen Anne, American Four Square, and Dutch Colonial-style houses as well as numerous frame vernacular houses. 617 Faulkner Avenue is decorated with gingerbread bargeboards, while 610 and 612 Faulkner Avenue are Queen Anne-style houses with polygonal bays.

Florida Avenue contains 7 contributing resources, consisting mostly of 1 ½-story brick Colonial Revival and Ranch style houses dating from after 1930.

Maryland Avenue. The 800 block contains 1- and 2-story frame vernacular houses, most with gable-end facades and 1-story porches. Some buildings have central cross gables. There are two Bungalow-style houses on this block. The 900 block contains mostly 2-story frame vernacular houses, with the house at 937 Maryland Avenue a vernacular Queen Anne-style house with a polygonal bay.

New York Avenue. The 700 and 800 blocks of New York Avenue contain a diverse collection of 1-, 1 ½- and 2-story frame and brick houses American Four Square style and Colonial Revival style houses predominate. St. Luke's Church is a large Gothic Revival brick church. 836 New York Avenue is a vernacular Queen Anne style building with a 2-story polygonal bay. Several 2-story brick apartment houses stand on the east side of the block. The 600 block also contains a diversity of house styles and building materials.

Raleigh Street. The 800 and 900 blocks of this street consist of 1 ½-story and 2-story frame vernacular buildings. The 700 block consists of several Queen Anne style buildings, among the oldest in the district. The house at 719 Raleigh Street has a profusion of gingerbread trim and a bracketed cornice along its front porch. The house at 731 has a prominent polygonal bay. The 600 block consists of mostly 1- and 2-story brick Colonial Revival and frame vernacular houses.

Virginia Avenue. The 900 block of Virginia Avenue contains several large brick and frame houses in the Colonial Revival and Queen Anne styles, as well as smaller Bungalow and vernacular dwellings. The 800 block is a treeless block with tightly packed 2-story frame vernacular houses, with either gable-end facades or side gable roofs with central cross gables. The 700 block features several frame 2-story duplexes with gable-end facades and 1-story front porches. Among the few American Four Square houses are three stuccoed houses at 702, 704, and 706 Virginia Avenue. The 600 block consists of mostly frame vernacular and vernacular Queen Anne style houses, some with original slate roofs. The former Hose Company No. 3, a 1 ½-story, gable roofed brick building, is located at 635 Virginia Avenue. It features a Palladian window and Colonial Revival trim.

United States Department of the Interior-National Park Service
 National Register of Historic Places Continuation Sheet
 Section Number 7 Page 4

MMM&I Historic District
 Berkeley County, West Virginia

West Virginia Avenue. The 900 block of West Virginia Avenue consists of frame, brick, and concrete block buildings in the vernacular Queen Anne, American Four Square, Colonial Revival, and Bungalow styles. The 800 block contains several large vacant lots, but the remaining lots contain American Four Square, Colonial Revival-style, and Ranch style houses. The houses on the 700 block are mostly brick and are either vernacular or American Four Square houses. The 600 block contains mostly frame houses, with fewer brick and concrete block houses. Some houses have gable-end facades. The concrete block houses are in the American Four Square style, with other houses in the Bungalow and Colonial Revival styles, as well as numerous vernacular houses.

INVENTORY OF CONTRIBUTING RESOURCES IN THE MMM&I HISTORIC DISTRICT (includes ID number keyed to map, address, date of construction, architectural style, and name and architectural description).

ID	Address	Style	Date of Construction	Contributing Status	Architectural Description
00277	707 Addition Street	Vernacular	1920	Contributing	This 1.5-story, 5-bay, gable-roofed frame house is built on an L plan and has a gable-end facade with a cross-gabled rear ell. There is a shed-roofed section within the ell. There is also a shed-roofed overhang supported by brackets above the door. The windows have 1/1 and 6/1 double-hung sash. There is a 1-story, shed-roofed wing on the south side of the house. There are two interior corbeled brick chimneys.
00055	525 W. Addition Street	Vernacular	1925	Contributing	This 1.5-story, 5-bay, gable-roofed frame house is built on an L plan and has a gable-end facade with a cross-gabled rear ell. There is a shed-roofed section within the ell. There is also a shed-roofed overhang supported by brackets above the door. The windows have 1/1 and 6/1 double-hung sash. There is a 1-story, shed-roofed wing on the south side of the house. There are two interior corbeled brick chimneys.
00056	519-521 W. Addition Street	Vernacular	1929	Contributing	This 2-story, 4-bay, pyramidal-roofed frame duplex house has a hip-roofed dormer on the front elevation. The hip-roofed porch is supported by Tuscan columns with a wood balustrade. There is a 2-story, hip-roofed rear porch with wood posts and a wood balustrade. The windows throughout have 1/1 double-hung sash, with shutters on the front elevation. There is a center brick chimney with a corbeled cap.
00276	612 Baker Street	Vernacular	1910	Contributing	This 1-story, 3-bay, gable-roofed frame house is built on an L plan and has a side-gabled roof with a gable front ell. The roof extends to form the front porch, which is supported by metal posts with a metal balustrade. The windows throughout have 1/1 double-hung sash with shutters.
00278	627 Baker Street	Vernacular	1910	Contributing	This 1-story, 3-bay, gable-roofed frame house

United States Department of the Interior-National Park Service
National Register of Historic Places Continuation Sheet
Section Number 7 Page 5

MMM&I Historic District
Berkeley County, West Virginia

ID	Address	Style	Date of Construction	Contributing Status	Architectural Description
					is built on an L plan and has a side-gabled roof with a gable front ell. The roof extends to form the front porch, which is supported by metal posts with a metal balustrade. The windows throughout have 1/1 double-hung sash with shutters.
00279	625 Baker Street	Vernacular	1910	Contributing	This 1-story, 3-bay, gable-roofed frame house is built on an L plan and has a side-gabled roof with a gable front ell. The roof extends to form the front porch, which is supported by metal posts with a metal balustrade. The windows throughout have 1/1 double-hung sash with shutters.
00280	623 Baker Street	Vernacular	Circa 1950	Contributing	This 2-story, 2-bay, gable-roofed frame house has a gable front roof with a gable front portico supported by turned wood posts. There are three octagonal windows on the east elevation of the house. The remaining windows have 1/1 double-hung sash with shutters. The door has a 3-pane sidelight on one side. There is a 1st-story porch on the rear of the house incised into the main block of the building.
00281	610 Buxton Street	Vernacular	Circa 1950	Contributing	This 2-story, 2-bay, gable-roofed frame house has a gable front roof with a gable front portico supported by turned wood posts. There are three octagonal windows on the east elevation of the house. The remaining windows have 1/1 double-hung sash with shutters. The door has a 3-pane sidelight on one side. There is a 1st-story porch on the rear of the house incised into the main block of the building.
00282	607 Buxton Street	Vernacular	Circa 1920	Contributing	This 1-story, 3-bay, gable-roofed frame house is built on an L plan and has a side-gabled roof with a gable front ell. The roof extends to form the front porch, which is supported by metal posts with a metal balustrade. The windows throughout have 1/1 double-hung sash with shutters.
00283	609 Buxton Street	Vernacular	1902	Contributing	This 1-story, 3-bay, gable-roofed frame house is built on an L plan and has a side-gabled roof with a gable front ell. The roof extends to form the front porch, which is supported by metal posts with a metal balustrade. The windows throughout have 1/1 double-hung sash with shutters.
00284	611 Buxton Street	Vernacular	1900	Contributing	This 1-story, 3-bay, gable-roofed frame house is built on an L plan and has a side-gabled roof with a gable front ell. The roof extends to form the front porch, which is supported by metal posts with a metal balustrade. The windows throughout have 1/1 double-hung sash with shutters.
00285	613 Buxton Street	Vernacular	1902	Contributing	This 2-story, 3-bay, gable-roofed house is built on an L plan and has a side-gabled roof with a cross-gabled rear ell and a cross gable with wood shingles on the front elevation. The hip-

United States Department of the Interior-National Park Service
 National Register of Historic Places Continuation Sheet
 Section Number 7 Page 6

MMM&I Historic District
 Berkeley County, West Virginia

ID	Address	Style	Date of Construction	Contributing Status	Architectural Description
					roofed porch is supported by Tuscan columns. The windows throughout have 1/1 double-hung sash with wood frames.
00286	615 Buxton Street	Vernacular	1931	Contributing	This 2-story, 3-bay, gable-roofed house is built on an L plan and has a side-gabled roof with a cross-gabled rear ell and a cross gable with wood shingles on the front elevation. The hip-roofed porch is supported by Tuscan columns. The windows throughout have 1/1 double-hung sash with wood frames.
00287	619 Buxton Street	Vernacular	1902	Contributing	This 2-story, 3-bay, gable-roofed house is built on an L plan and has a side-gabled roof with a cross-gabled rear ell and a cross gable with wood shingles on the front elevation. The hip-roofed porch is supported by Tuscan columns. The windows throughout have 1/1 double-hung sash with wood frames.
00288	711 Buxton Street	Vernacular	1939	Contributing	This 2-story, 2-bay, gable-roofed frame house has a gable front roof with a gable front portico supported by turned wood posts. There are three octagonal windows on the east elevation of the house. The remaining windows have 1/1 double-hung sash with shutters. The door has a 3-pane sidelight on one side. There is a 1st-story porch on the rear of the house incised into the main block of the building.
00289	715 Buxton Street	Vernacular	1945	Contributing	This 2-story, 2-bay, gable-roofed frame house has a gable front roof with a gable front portico supported by turned wood posts. There are three octagonal windows on the east elevation of the house. The remaining windows have 1/1 double-hung sash with shutters. The door has a 3-pane sidelight on one side. There is a 1st-story porch on the rear of the house incised into the main block of the building.
00016	513 Buxton Street	Vernacular	1920	Contributing	This 2-story, 3-bay, gable-roofed frame house is built on a T plan and has a side-gabled roof with a molded cornice and returns. There is a steeply pitched cross gable on the front elevation with cornice returns and an arched window opening with a molded frame. The hip-roofed porch is supported by Tuscan columns. The center door is paneled with a shelf molding and mouse tooth detailing. The windows throughout have 1/1 double-hung sash. There is an interior end brick chimney on the north elevation.
00196	811 Buxton Street	Vernacular/ Bungalow	1948	Contributing	This 1.5-story, 2-bay, gable-roofed brick house has a side-gabled roof with full-width shed-roofed dormers on the front and back elevations. The shed-roofed porch is supported by brick posts on brick bases with a brick half wall and cement coping. The off-center door is a Craftsman style door. The windows throughout have 3/1 double-hung sash with brick jack arches and sills. The windows are

United States Department of the Interior-National Park Service
 National Register of Historic Places Continuation Sheet
 Section Number 7 Page 7

MMM&I Historic District
 Berkeley County, West Virginia

ID	Address	Style	Date of Construction	Contributing Status	Architectural Description
					often paired. The rear porch has a shed roof and is supported by brick posts. There is a side entrance covered by a gabled hood. The exterior brick chimney has decorative brick patterns.
00017	511 Berry Street	Vernacular	1919	Contributing	This 1.5-story, 2-bay, gable-roofed frame house has a shed-roofed dormer on the front elevation. There is a 1-story, shed-roofed ell on the rear of the house. The gable front portico is supported by wood posts. The windows throughout have 3/1 double-hung sash. There is an exterior brick chimney with a corbeled cap on the north elevation.
00018	502 Bowers Street	Vernacular	1953	Contributing	This 2-story, 3-bay, gable-roofed frame house has a side-gabled roof with a cross-gabled hyphen connecting to a second side-gabled section which fronts Addition St. There is a steeply pitched cross gable on the front elevation. The roof has a molded cornice with returns. The hip-roofed porch is supported by tapered wood posts on a wood shingle-clad half wall. The 1/1 double-hung sash windows have molded frames with dentils. There is a 2-story, flat-roofed wing on the south side of the house.
00019	504 Bowers Street	Vernacular	1953	Contributing	This 2-story, 2-bay, gable-roofed frame house is built on an L plan and has a side-gabled roof with a molded cornice and returns. The gable ends are clad in diagonal clapboard siding. The shed-roofed porch is supported by chamfered wood posts with a metal balustrade. There is a shed-roofed porch on the south side of the rear ell. The 1/1 double-hung sash windows have molded frames with dentils.
00236	744 Faulkner Avenue	Vernacular/ Ranch	Circa 1950s	Contributing	This 1-story, 3-bay, gable-roofed brick house has a side-gabled roof trimmed with a wood cornice and rake boards and a cross-gabled rear ell. The entrance stoop is covered by an aluminum awning, as are the side porch, the 1/1 double-hung sash windows and the picture window on the front elevation. The house has soldier bond brick trim. There is an exterior corbeled brick chimney on the south elevation.
00237	732 Faulkner Avenue	Vernacular/ Colonial Revival	1941	Contributing	This 2-story, 3-bay, gable-roofed frame house has a side-gabled roof with a box cornice and returns. The center door has a Greek Revival hood molding with Tuscan pilasters and a pedimented hood. There is a 1-story, hip-roofed, enclosed side porch on the north end of the house. This porch has a rectangular transom over the door and Tuscan columns support the roof. The windows throughout have 6/1 double-hung sash with wood frames. The center brick chimney has a corbeled cap.
00238	726 Faulkner Avenue	Vernacular Queen Anne	1910	Contributing	This 2-story, 3-bay, hip- and gable-roofed frame house is built on a modified L plan with a hipped roof comprising most of the main

United States Department of the Interior-National Park Service
 National Register of Historic Places Continuation Sheet
 Section Number 7 Page 8

MMM&I Historic District
 Berkeley County, West Virginia

ID#	Address	Style	Date of Construction	Contributing Status	Architectural Description
					house block and front and rear ell cross gables. The roof has a molded cornice, with returns on the cross gables. The gable front cross gable is clad in fish scale shingles on the gable end and tops a 2-story projecting polygonal bay. The hip-roofed wrap-around porch is supported by Tuscan columns with a metal balustrade and is enclosed on the north end. The door has a rectangular transom. There is a 2-story, shed-roofed rear wing.
00239	701 Faulkner Avenue	Vernacular	1909	Contributing	This 2-story, 3-bay, gable-roofed frame house is built on an L plan and has a side-gabled roof with a 2-story, cross-gabled rear ell and a gable front cross gable on the front elevation. The roof has a molded cornice and returns. The hip-roofed porch is supported by turned wood posts with a spindle balustrade. The entrance bay projects from the main block of the house on the first story. There is a hip-roofed side porch supported by turned wood posts. The windows throughout have 1/1 double-hung sash. There are two interior end brick chimneys with corbeled caps.
00240	705 Faulkner Avenue	Vernacular	1940	Contributing	This 2-story, 3-bay, gable-roofed frame house is built on an L plan and has a side-gabled roof with a 2-story cross-gabled rear ell and a cross gable on the front elevation. The cornice returns have been covered. The hip-roofed porch is supported by metal posts with a metal balustrade. The windows throughout have 1/1 double-hung sash, with shutters on the front elevation. There is a gable-roofed hood over the side door. The entrance bay projects from the main house block on the first story. There is a corbeled brick interior end chimney on the south end of the house.
00241	709 Faulkner Avenue	Vernacular Queen Anne/Gothic Revival	1909	Contributing	This 2-story, 3-bay, hip-roofed frame house is built on an L plan and has a gable-roofed rear ell. A 2-story projecting center bay is topped by a gable-roofed cross gable, with a molded cornice and returns. The gable end is clad in wood shingles and has an arched window with molded surround. The shed-roofed porch is supported by turned wood posts with jigsaw spindle brackets. The windows throughout have 2/2 double-hung sash, with shutters on the front elevation.
00242	713 Faulkner Avenue	Vernacular	1936	Contributing	This 1.5-story, 5-bay, gable-roofed frame house is built on an L plan and has a gable-end facade with a cross-gabled rear ell. There is a shed-roofed section within the ell. There is also a shed-roofed overhang supported by brackets above the door. The windows have 1/1 and 6/1 double-hung sash. There is a 1-story, shed-roofed wing on the south side of the house. There are two interior corbeled brick chimneys.

United States Department of the Interior-National Park Service
National Register of Historic Places Continuation Sheet
Section Number 7 Page 9

MMM&I Historic District
Berkeley County, West Virginia

ID#	Address	Style	Date of Construction	Contributing Status	Architectural Description
00243	717-719 Faulkner Avenue	Vernacular American Four Square	1933	Contributing	This 2-story, 4-bay, pyramidal-roofed frame duplex house has a hip-roofed dormer on the front elevation. The hip-roofed porch is supported by Tuscan columns with a wood balustrade. There is a 2-story, hip-roofed rear porch with wood posts and a wood balustrade. The windows throughout have 1/1 double-hung sash, with shutters on the front elevation. There is a center brick chimney with a corbeled cap.
00244	719 1/2-721 Faulkner Avenue	Vernacular	1927	Contributing	This 2-story, 4-bay, gable-roofed frame duplex house has a gable-end facade with cornice returns. The hip-roofed porch is supported by Tuscan columns with a wood balustrade. There is a 1-story, shed-roofed rear wing. The windows throughout have 1/1 double-hung sash. There are two interior brick chimneys with corbeled caps.
00245	723-725 Faulkner Avenue	Vernacular	1924	Contributing	This 2-story, 4-bay, gable-roofed frame duplex house has a gable-end facade with cornice returns. The hip-roofed porch has a pedimented gable over the entrance and is supported by metal posts with a metal balustrade. There is a 1-story, shed-roofed rear wing. The windows throughout have 1/1 double-hung sash with wood frames. There are two interior brick chimneys with corbeled caps.
00246	727 Faulkner Avenue	Bungalow	1931	Contributing	This 1.5-story, 2-bay, gable-roofed frame house has a side-gabled roof with a gable front dormer. The hip-roofed porch is supported by metal posts with a metal balustrade. There is also a hip-roofed rear porch, which is supported by wood posts. The off-center door is Craftsman style, and the 1/1 double-hung sash windows have shutters on the front elevation. There is an interior brick chimney.
00247	729 Faulkner Avenue	Vernacular	1949	Contributing	This 1-story, 3-bay, gable-roofed house has a gable front roof with weatherboard siding in the gable end. There is an aluminum awning supported by metal posts over the front door. The windows throughout have 1/1 sliding sash with brick sills. There is an interior brick chimney.
00248	735 Faulkner Avenue	Craftsman	1939	Contributing	This 1-story, 3-bay, hip-roofed frame house has a hip-roofed dormer on the front elevation, and the roof extends to form the front porch, which is supported by tapered wood posts on brick bases with a wood balustrade. The off-center door is Craftsman style, as are the 3/1 double-hung sash windows throughout. All window and door openings have molded wood frames. There is a shed-roofed side porch supported by tapered wood posts on brick bases with a brick half wall. There is an interior brick chimney.
00249	741 Faulkner Avenue	Vernacular Tudor/Gothic Revival	Circa 1950	Contributing	This 1.5-story, 3-bay, gable-roofed frame house has a side-gabled roof and a gable front dormer with an oriel on the front elevation. There is a

United States Department of the Interior-National Park Service
 National Register of Historic Places Continuation Sheet
 Section Number 7 Page 10

MMM&I Historic District
 Berkeley County, West Virginia

ID	Address	Style	Date of Construction	Contributing Status	Architectural Description
					second, smaller gable front dormer on the front elevation, as well. There is a shed-roofed awning with metal supports over the front door. The windows throughout have 6/6 double-hung sash with wood frames. There is a 1-story, gable-roofed wing on the north end of the house. This section has 6/1 double-hung sash windows. There is an interior brick chimney.
00250	743-745 Faulkner Avenue	Vernacular American Four Square	1919	Contributing	This 2-story, 4-bay, pyramidal-roofed duplex house has a tile cornice and hip-roofed dormers on the north, south, and east elevations. The first story is clad in rusticated concrete block and the second story is clad in plain concrete block. The hip-roofed porch has a pedimented gable over the entrance and is supported by molded concrete columns with Corinthian capitals. The house is trimmed with rusticated concrete block quoins. There is a 2-story, gable-roofed rear wing. The two Craftsman doors have rectangular transoms. The windows have 1/1 double-hung sash throughout with cement lintels and sills.
00251	751 Faulkner Avenue	Vernacular Gothic Revival	1894	Contributing	This 2-story, 5-bay, hip-roofed house has a pedimented cross gable on the front elevation. The hip-roofed porch is supported by wood posts. There is a projecting polygonal bay on the first story of the front elevation. The center door has a rectangular transom. The windows throughout have 2/2 double-hung sash with wood frames. There is a 1-story, shed-roofed rear wing. There are two interior brick chimneys with corbeled caps.
00252	901 S. Florida Avenue	Vernacular/ Colonial Revival	1940	Contributing	This 2-story, 3-bay, gable-roofed frame house has a side-gabled roof and a 1-story, 1-bay front porch supported by turned wood posts with a plain wood balustrade. The house is trimmed with a molded cornice with returns and corner boards. There is a 1-story, shed-roofed ell on the rear of the house. The windows throughout have 2/2 double-hung sash with wood frames. There are 2 interior end brick chimneys with corbeled caps on the north and south end of the house.
00253	909 S. Florida Avenue	Vernacular/ Colonial Revival	1940	Contributing	This 2-story, 3-bay, gable-roofed frame house has a side-gabled roof and a 1-story, 1-bay front porch supported by turned wood posts with a plain wood balustrade. The house is trimmed with a molded cornice with returns and corner boards. There is a 1-story, shed-roofed ell on the rear of the house. The windows throughout have 2/2 double-hung sash with wood frames. There are 2 interior end brick chimneys with corbeled caps on the north and south end of the house.
00254	911 S. Florida Avenue	Vernacular	1952	Contributing	This 1-story, 3-bay, gable-roofed frame house has a side-gabled roof and a gable front portico

United States Department of the Interior-National Park Service
 National Register of Historic Places Continuation Sheet
 Section Number 7 Page 11

MMM&I Historic District
 Berkeley County, West Virginia

ID	Address	Style	Date of Construction	Contributing Status	Architectural Description
					supported by wood posts. The windows throughout have 6/6 double-hung sash. The door is paneled with 3 panes at its top. There is an exterior brick chimney with a corbeled cap on the south elevation.
00162	614 Faulkner Avenue	Vernacular	1910	Contributing	This 1.5-story, 2-bay, gable-roofed frame house has a side-gabled roof with a gable front dormer. The hip-roofed porch is supported by metal posts with a metal balustrade. There is also a hip-roofed rear porch, which is supported by wood posts. The off-center door is Craftsman style, and the 1/1 double-hung sash windows have shutters on the front elevation. There is an interior brick chimney.
00163	612 Faulkner Avenue	Vernacular Queen Anne	1910	Contributing	This 1-story, 3-bay, gable-roofed house has a gable front roof with weatherboard siding in the gable end. There is an aluminum awning supported by metal posts over the front door. The windows throughout have 1/1 sliding sash with brick sills. There is an interior brick chimney.
00165	608 Faulkner Avenue	Vernacular	1935	Contributing	This 1.5-story, 3-bay, gable-roofed frame house has a side-gabled roof and a gable front dormer with an oriel on the front elevation. There is a second, smaller gable front dormer on the front elevation, as well. There is a shed-roofed awning with metal supports over the front door. The windows throughout have 6/6 double-hung sash with wood frames. There is a 1-story, gable-roofed wing on the north end of the house. This section has 6/1 double-hung sash windows. There is an interior brick chimney.
00200	666 Faulkner Avenue	American Four Square	1920	Contributing	This 2-story, 3-bay, pyramidal-roofed house has a hip-roofed dormer on the front elevation and a molded cornice. The hip-roofed porch is supported by tapered wood posts on rusticated concrete block bases with a rusticated concrete block half wall and cement coping. The center door is paneled with shelf molding and mouse tooth detailing. There is a water table below the first story. The 1/1 double-hung sash windows have molded frames, with awnings on the second story of the front elevation.
00201	662 Faulkner Avenue	Vernacular	1920	Contributing	This 2-story, 3-bay, gable-roofed frame house is built on an L plan and has a side-gabled roof

United States Department of the Interior-National Park Service
 National Register of Historic Places Continuation Sheet
 Section Number 7 Page 12

MMM&I Historic District
 Berkeley County, West Virginia

ID	Address	Style	Date of Construction	Contributing Status	Architectural Description
					with cornice returns. There is a gable front cross gable on the front elevation of the house. The hip-roofed porch is supported by metal posts. The 1/1 double-hung sash windows have shutters on the front elevation. There is an incised entry on the south side of the 2-story, gable-roofed rear ell. The 2 interior brick chimneys have corbeled caps.
00202	660 Faulkner Avenue	American Four Square	1922	Contributing	This 2-story, 2-bay, pyramidal-roofed frame house has a molded cornice, a hip-roofed dormer and a 1-story, gable-roofed rear ell. The off-center hip-roofed porch is supported by metal posts with a metal balustrade. The 1/1 double-hung sash windows have wood frames, with drip caps on the first story.
00203	658 Faulkner Avenue	Vernacular/ Gothic Revival	1924	Contributing	This 2-story, 3-bay, gable-roofed frame house is built on a T plan and has a side-gabled roof with a molded cornice and returns. There is a steeply pitched cross gable on the front elevation with cornice returns and an arched window opening with a molded frame. The hip-roofed porch is supported by Tuscan columns. The center door is paneled with a shelf molding and mouse tooth detailing. The windows throughout have 1/1 double-hung sash. There is an interior end brick chimney on the north elevation.
00204	656 Faulkner Avenue	Vernacular Bungalow	1930	Contributing	This 1.5-story, 2-bay, gable-roofed frame house has a shed-roofed dormer on the front elevation. There is a 1-story, shed-roofed ell on the rear of the house. The gable front portico is supported by wood posts. The windows throughout have 3/1 double-hung sash. There is an exterior brick chimney with a corbeled cap on the north elevation.
00205	601 Faulkner Avenue	Vernacular	Circa 1910	Contributing	This 2-story, 3-bay, gable-roofed frame house has a side-gabled roof with a cross-gabled hyphen connecting to a second side-gabled section which fronts Addition St. There is a steeply pitched cross gable on the front elevation. The roof has a molded cornice with returns. The hip-roofed porch is supported by tapered wood posts on a wood shingle-clad half wall. The 1/1 double-hung sash windows have molded frames with dentils. There is a 2-story, flat-roofed wing on the south side of the house.
00206	603 Faulkner Avenue	Vernacular	1900	Contributing	This 2-story, 2-bay, gable-roofed frame house is built on an L plan and has a side-gabled roof with a molded cornice and returns. The gable ends are clad in diagonal clapboard siding. The shed-roofed porch is supported by chamfered wood posts with a metal balustrade. There is a shed-roofed porch on the south side of the rear ell. The 1/1 double-hung sash windows have molded frames with dentils.
00207	605 Faulkner	Vernacular	1900	Contributing	This 2-story, 2-bay, gable-roofed frame house

United States Department of the Interior-National Park Service
 National Register of Historic Places Continuation Sheet
 Section Number 7 Page 13

MMM&I Historic District
 Berkeley County, West Virginia

ID	Address	Style	Date of Construction	Contributing Status	Architectural Description
	Avenue				has a gable-end facade with covered cornice returns. The flared hipped porch roof is supported by turned wood posts with jigsaw and spindle brackets. The windows throughout have 1/1 double-hung sash. The center brick chimney has a corbeled cap.
00208	607 Faulkner Avenue	Vernacular	1880	Contributing	This 2-story, 2-bay, gable-roofed frame house is built on a modified L plan and has a gable front roof with a molded cornice, returns, and trimmed with corner boards. The hip-roofed porch is supported by Tuscan columns with a wood balustrade. There is a 2-story, shed-roofed porch on the south elevation, with turned wood posts and a plain wood balustrade on the second story. The windows throughout have 1/1 double-hung sash with molded wood frames.
00209	611 Faulkner Avenue	Vernacular/ Dutch Colonial	1920	Contributing	This 1.5-story, 2-bay, gambrel-roofed house has a side-gabled roof with a molded cornice and shed-roofed returns, and a smaller-scale gambrel-roofed rear projecting bay. There are pedimented gabled dormers on the front elevation. The off-center Craftsman style door is within an incised porch on the northeast corner of the house. This porch is supported by a tapered Tuscan column on a brick base, with lattice work decoration on the north end of the porch. The 6/1 double-hung sash windows have molded frames throughout, and wood shingles on the front elevation. The center brick chimney has a corbeled cap.
00210	613 Faulkner Avenue	Vernacular	1936	Contributing	This 2-story, 2-bay, gable-roofed brick house has a gable-end facade with molded cornice and a Palladian window on the gable end. There is a hip-roofed dormer on the south elevation. There is a 1-story, shed-roofed rear ell on the house. The hip-roofed porch has a pedimented cross gable and is supported by brick posts on brick bases with a brick half wall and cement coping. The windows throughout have 4/1 double-hung sash with brick jack arches and sills. The interior brick chimney has a corbeled cap.
00211	615-615 1/2 Faulkner Avenue	American Four Square	1924	Contributing	This 2-story, 4-bay, pyramidal-roofed duplex house has a molded cornice and hip-roofed dormers on the north, south, and east elevations. There are rusticated concrete block quoins of a lighter color than the rest of the exterior. The hip-roofed porch is supported by wood columns with Corinthian capitals on Rusticated concrete block bases, with a rusticated concrete block half wall with cement coping. The windows throughout have 1/1 double-hung sash with cement lintels and sills. There is a 2-story, hip-roofed rear ell. The 2 brick interior chimneys have corbeled caps.

United States Department of the Interior-National Park Service
National Register of Historic Places Continuation Sheet
Section Number 7 Page 14

MMM&I Historic District
Berkeley County, West Virginia

ID#	Address	Style	Date of Construction	Contributing Status	Architectural Description
00212	617 Faulkner Avenue	Queen Anne Vernacular	1900	Contributing	This 2-story, 4-bay, gable-roofed frame house is built on an L plan and has a gable front roof with a hip-roofed ell. The roof has a molded cornice, returns, and gingerbread eaves on the front elevation. The roof overhangs the front facade and has acorn pendants, dentil molding, and brackets, and is clad in wood shingles in the gable end. The second story of the front elevation has a paneled projecting polygonal bay. There is a 1-story, shed-roofed rear ell. The hip-roofed wrap-around porch has by Tuscan columns with a half wall. There are 1/1 double-hung sash windows throughout and a rectangular door transom.
00213	625-627 Faulkner Avenue	Vernacular	1900	Contributing	This 2-story, 4-bay, gable-roofed frame duplex house has a gable-end facade with covered cornice returns. There is a 2-story, gable-roofed rear ell. The hip-roofed porch is supported by tapered wood posts with a wood half wall. The 1/1 double-hung sash windows are often paired. There are picture windows on the first story of the front elevation. There is a center brick chimney.
00214	651 Faulkner Avenue	Vernacular	1900	Contributing	This 2-story, 2-bay, gable-roofed frame house has a gable-end facade with a molded cornice and returns. The hip-roofed porch is supported by Tuscan columns with a wood balustrade. There is a 1-story, shed-roofed rear ell. The windows throughout have 1/1 double-hung sash, with shutters on the front elevation. The center brick chimney has a corbeled cap.
00215	653 Faulkner Avenue	Vernacular	1900	Contributing	This 2-story, 2-bay, gable-roofed frame house has a gable-end facade with returns. The hip-roofed porch is supported by turned wood posts with a wood balustrade. The off-center Craftsman style door has a rectangular transom. The 1/1 double-hung sash windows have shutters on the front elevation. There is a 1-story, shed-roofed rear ell. The center brick chimney has a corbeled cap.
00216	655 Faulkner Avenue	Vernacular	1890	Contributing	This 2-story, 2-bay, gable-roofed frame house has a gable-end facade with a molded cornice and returns. The hip-roofed porch is supported by turned wood posts with a wood balustrade. The windows throughout have 1/1 double-hung sash with wood frames. The 2-story, cross-gabled ell has a gable-roofed hood over the side entryway. The interior brick chimney has a corbeled cap.
00217	657 Faulkner Avenue	Vernacular	1900	Contributing	This 2-story, 3-bay, gable-roofed frame house is built on an L plan and has a side-gabled roof. The hip-roofed porch is supported by metal posts with a metal balustrade. There is a 1-story, shed-roofed rear wing attached to the ell. The windows throughout have 1/1 double-hung sash, with shutters on the front elevation. There

United States Department of the Interior-National Park Service
National Register of Historic Places Continuation Sheet
Section Number 7 Page 15

MMM&I Historic District
Berkeley County, West Virginia

ID#	Address	Style	Date of Construction	Contributing Status	Architectural Description
					is an interior end brick chimney on the north end of the house.
00218	659 Faulkner Avenue	Vernacular	1900	Contributing	This 2-story, 3-bay, gable-roofed frame house has a gable-end facade with cornice returns. The shed-roofed porch is supported by wood posts with a wood balustrade. There is a 1-story, shed-roofed, enclosed side porch. The windows have 2/1, 2/2, and 3/1 double-hung sash. There is a long, 1-story, low shed-roofed rear ell on the house.
00219	669 Faulkner Avenue	Vernacular	1905	Contributing	This 2-story, 3-bay, gable-roofed frame house is built on an L plan and has a side-gabled roof with cornice returns. There is a cross gable on the front elevation, also with cornice returns. There is a projecting center bay on the first story of the front elevation. The hip-roofed porch is supported by fluted metal columns. The windows throughout have 1/1 double-hung sash. The rear ell has an enclosed shed-roofed porch. The interior end chimney has been covered with cement.
00198	738 S. Maryland Avenue	Vernacular Queen Anne	1907	Contributing	This 2-story, 3-bay, gable-roofed frame house is built on a T plan and has a side-gabled roof with a molded cornice and returns. The north and south ends of the house are polygonal, and the roof overhangs each. There is a gable-front cross gable on the front elevation. The hip-roofed porch is supported by metal posts with a metal balustrade. The windows on the main house block have 1/1 double-hung sash, on the 2-story rear ell have 1/1 and banked 3/1. There is an enclosed shed-roofed porch on the ell. The interior brick chimney has a corbeled cap.
00188	830 S. Maryland Avenue	Vernacular	1920	Contributing	This 2-story, 3-bay, gable-roofed frame house has a side-gabled roof with a pedimented cross gable on the front elevation, and a molded cornice with returns. The 2-story, flat-roofed porch is supported by metal posts with a concrete block half wall on the first story and a metal balustrade on the second story. The windows throughout have 1/1 double-hung sash with molded surrounds and modern shutters. There is a 1-story, shed-roofed rear ell on the house. The 2 interior end brick chimneys have corbeled caps.
00189	826 S. Maryland Avenue	American Four Square	1948	Contributing	This 2-story, 2-bay, pyramidal-roofed frame house has a hip-roofed dormer on the front elevation. The hip-roofed porch is supported by brick posts. The windows throughout have modern 1/1 double-hung sash. There is an exterior brick chimney with a corbeled cap on the north end of the house.
00190	822 S. Maryland Avenue	Vernacular	1950	Contributing	This 2-story, 2-bay, gable-roofed frame house has a gable-end facade with a box cornice and returns. The entrance is topped by a 1-story, 1-bay, shed-roofed aluminum awning supported

United States Department of the Interior-National Park Service
 National Register of Historic Places Continuation Sheet
 Section Number 7 Page 16

MMM&I Historic District
 Berkeley County, West Virginia

ID	Address	Style	Date of Construction	Contributing Status	Architectural Description
					by metal posts. The windows throughout have 1/1 double-hung sash. There is a 1-story, shed-roofed porch supported by metal posts on the rear of the house. There is a center brick chimney.
00191	820 S. Maryland Avenue	Vernacular	1910	Contributing	This 2-story, 2-bay, gable-roofed frame house has a gable-end facade with a box cornice and returns. The hip-roofed porch has been enclosed and has modern 1/1 double-hung sash windows and a vinyl-clad half wall. The windows throughout have 1/1 double-hung sash. There is a 1-story, gable-roofed rear ell on the house. This ell has a shed-roofed side porch. The interior brick chimney has a corbeled cap.
00192	816 S. Maryland Avenue	Vernacular	1900	Contributing	This 1-story, 3-bay, gable-roofed frame house is built on an L plan and has a side-gabled roof and a 1-story, hip-roofed porch supported by turned wood posts with a modern wood balustrade. The windows throughout have 1/1 double-hung sash. The interior brick chimney has a corbeled cap.
00193	812-814 S. Maryland Avenue	Vernacular	Circa 1920	Contributing	This 2.5-story, 4-bay, gable-roofed frame duplex house has a pedimented gable-end facade with a molded cornice and returns. The shed-roofed porch is supported by a metal post on the south end, and is enclosed on the north end. The windows throughout have 2/2 and modern 1/1 double-hung sash with wood sills. There is a 1-story, shed-roofed ell on the rear of the house. There are 2 interior brick chimneys, one with a corbeled cap.
00194	804 S. Maryland Avenue	Vernacular Tudor	1940	Contributing	This 2.5-story, 4-bay, gable-roofed frame duplex house has a pedimented gable-end facade with a molded cornice and returns. The shed-roofed porch is supported by a metal post on the south end, and is enclosed on the north end. The windows throughout have 2/2 and modern 1/1 double-hung sash with wood sills. There is a 1-story, shed-roofed ell on the rear of the house. There are 2 interior brick chimneys, one with a corbeled cap.
00195	819 Buxton Street	Vernacular	1930	Contributing	This 1.5-story, 3-bay, gable-roofed frame house is built on an L plan, and has a side-gabled roof with a gable front cross gable. The roof has a molded cornice with returns. The roof extends to form the front porch, which is supported by tapered wood posts on stone-faced bases, with a wood balustrade. The windows throughout have 1/1 double-hung sash with shutters. There is an interior brick chimney.
00143	836 S. New York Avenue	Vernacular Queen Anne	1945	Contributing	This 2-story, 3-bay, gable-roofed frame house has a side-gabled roof and a 1-story, 1-bay front porch supported by turned wood posts with a plain wood balustrade. The house is trimmed with a molded cornice with returns

United States Department of the Interior-National Park Service
 National Register of Historic Places Continuation Sheet
 Section Number 7 Page 17

MMM&I Historic District
 Berkeley County, West Virginia

ID	Address	Style	Date of Construction	Contributing Status	Architectural Description
					and corner boards. There is a 1-story, shed-roofed ell on the rear of the house. The windows throughout have 2/2 double-hung sash with wood frames. There are 2 interior end brick chimneys with corbeled caps on the north and south end of the house.
00144	834 S. New York Avenue	Craftsman	1920	Contributing	This 1-story, 3-bay, gable-roofed frame house has a gable-end facade and a gable front porch supported by tapered wood posts on brick bases with a wood balustrade. The roof has exposed rafter tails. The off-center door is Craftsman style, and the windows throughout have 3/1 or 4/1 double-hung sash with shutters. The interior brick chimney has a corbeled cap.
00145	828 S. New York Avenue	Craftsman	1944	Contributing	This 2-story, 3-bay, pyramidal-roofed frame house has a projecting cross-gable rear ell and a pedimented cross gable on the front. The molded cornice has returns. There is a 1-story, gable-roofed rear wing with an incised porch. The hip-roofed wrap-around porch has a pedimented gable and is supported by Tuscan columns with a wood balustrade. The off-center door has sidelights. The 1/1 double-hung sash windows have molded frames. The center brick chimney has a corbeled cap.
00146	826 S. New York Avenue	American Four Square	1900	Contributing	This 2-story, 3-bay, gable-roofed frame house is built on a T plan and has a gable front facade with a cross-gabled rear ell. The roof has cornice returns. The wrap-around, hip-roofed porch is enclosed on the north and south ends, and is supported by tapered wood posts. There is a 1-story, shed-roofed rear wing. The windows throughout have 1/1 double-hung sash, with awnings on the front elevation. The center brick chimney has a corbeled cap.
00147	820 S. New York Avenue	Vernacular	1910	Contributing	This 1.5-story, 4-bay, gable-roofed house has a gable-end facade and a shed-roofed dormer on the south elevation. The hip-roofed porch is supported by metal posts with a metal balustrade. There are picture windows on the front elevation, and 1/1 double-hung sash windows elsewhere. The front windows have shutters. The two front doors are paneled with 4-pane windows. The interior brick chimney has a corbeled cap.
00148	816 S. New York Avenue	Vernacular	Circa 1910	Contributing	This 1.5-story, 4-bay, gable-roofed frame house has a side-gabled roof with a cross-gabled dormer on the front elevation. The enclosed porch is contained within the main block of the house, and has jalousie windows. There is a projecting polygonal window bay on the front elevation. There is a 1-story, hip-roofed ell on the rear of the house. The windows throughout have 1/1 double-hung sash with shutters. There is a brick chimney with a corbeled cap on the gable end of the house.

United States Department of the Interior-National Park Service
National Register of Historic Places Continuation Sheet
Section Number 7 Page 18

MMM&I Historic District
Berkeley County, West Virginia

ID	Address	Style	Date of Construction	Contributing Status	Architectural Description
00149	812 S. New York Avenue	Vernacular	1910	Contributing	This 2-story, 2-bay, gable-roofed frame house has a gable-end facade with a molded cornice and returns. There is a Palladian window in the gable end. The hipped L-shaped porch is supported by wood posts on a brick half wall. The windows have 1/1 double-hung sash with wood frames, and there is a diamond-shaped window on the south elevation. The front door has a rectangular transom. There are two interior brick chimneys with corbeled caps.
00150	808 S. New York Avenue	Vernacular	1920	Contributing	This 2-story, 3-bay, gable-roofed frame house has a side-gabled roof with a molded cornice and returns. The hip-roofed porch is supported by turned wood posts with a wooden balustrade. There is a 1-story, shed-roofed rear wing on the house. The center door is Craftsman style with a rectangular transom, and the windows have 3/1 double-hung sash. There are two interior end brick chimneys with corbeled caps.
00151	804 S. New York Avenue	Vernacular	1920	Contributing	This 2-story, 3-bay, gable-roofed brick house has a gable-end facade and a shed-roofed overhang between the first and second stories. This building appears to have been a former garage, as a picture window has been installed in a space approximately the size of a garage bay. The windows throughout have 3/1 double-hung sash, with awnings on the second story. The second-story gable-roofed rear porch is clad in asbestos.
00152	800 S. New York Avenue	Vernacular Queen Anne	1945	Contributing	This 1-story, 3-bay, gable-roofed brick house has a side-gabled roof trimmed with a wood cornice and rake boards and a cross-gabled rear ell. The entrance stoop is covered by an aluminum awning, as are the side porch, the 1/1 double-hung sash windows and the picture window on the front elevation. The house has soldier bond brick trim. There is an exterior corbeled brick chimney on the south elevation.
00153	732 S. New York Avenue	Vernacular	1950	Contributing	This 2-story, 3-bay, gable-roofed frame house has a side-gabled roof with a box cornice and returns. The center door has a Greek Revival hood molding with Tuscan pilasters and a pedimented hood. There is a 1-story, hip-roofed, enclosed side porch on the north end of the house. This porch has a rectangular transom over the door and Tuscan columns support the roof. The windows throughout have 6/1 double-hung sash with wood frames. The center brick chimney has a corbeled cap.
00154	728 S. New York Avenue	Vernacular	Circa 1940	Contributing	This 2-story, 3-bay, hip- and gable-roofed frame house is built on a modified L plan with a hipped roof comprising most of the main house block and front and rear ell cross gables. The roof has a molded cornice, with returns on the cross gables. The gable front cross gable is

United States Department of the Interior-National Park Service
 National Register of Historic Places Continuation Sheet
 Section Number 7 Page 19

MMM&I Historic District
 Berkeley County, West Virginia

ID	Address	Style	Date of Construction	Contributing Status	Architectural Description
					clad in fish scale shingles on the gable end and tops a 2-story projecting polygonal bay. The hip-roofed wrap-around porch is supported by Tuscan columns with a metal balustrade and is enclosed on the north end. The door has a rectangular transom. There is a 2-story, shed-roofed rear wing.
00155	716-718 S. New York Avenue	American Four Square	Circa 1920	Contributing	This 2-story, 3-bay, gable-roofed frame house is built on an L plan and has a side-gabled roof with a 2-story, cross-gabled rear ell and a gable front cross gable on the front elevation. The roof has a molded cornice and returns. The hip-roofed porch is supported by turned wood posts with a spindle balustrade. The entrance bay projects from the main block of the house on the first story. There is a hip-roofed side porch supported by turned wood posts. The windows throughout have 1/1 double-hung sash. There are two interior end brick chimneys with corbeled caps.
00156	700 S. New York Avenue	Gothic Revival	1920	Contributing	This 2-story, 3-bay, gable-roofed frame house is built on an L plan and has a side-gabled roof with a 2-story cross-gabled rear ell and a cross gable on the front elevation. The cornice returns have been covered. The hip-roofed porch is supported by metal posts with a metal balustrade. The windows throughout have 1/1 double-hung sash, with shutters on the front elevation. There is a gable-roofed hood over the side door. The entrance bay projects from the main house block on the first story. There is a corbeled brick interior end chimney on the south end of the house.
00157	638 S. New York Avenue	American Four Square	1930	Contributing	This 2-story, 3-bay, hip-roofed frame house is built on an L plan and has a gable-roofed rear ell. A 2-story projecting center bay is topped by a gable-roofed cross gable, with a molded cornice and returns. The gable end is clad in wood shingles and has an arched window with molded surround. The shed-roofed porch is supported by turned wood posts with jigsaw spindle brackets. The windows throughout have 2/2 double-hung sash, with shutters on the front elevation.
00158	634 S. New York Avenue	Vernacular	Circa 1930s	Contributing	This 1.5-story, 5-bay, gable-roofed frame house is built on an L plan and has a gable-end facade with a cross-gabled rear ell. There is a shed-roofed section within the ell. There is also a shed-roofed overhang supported by brackets above the door. The windows have 1/1 and 6/1 double-hung sash. There is a 1-story, shed-roofed wing on the south side of the house. There are two interior corbeled brick chimneys.
00159	630-632 S. New York Avenue	Vernacular/ Colonial Revival	1951	Contributing	This 2-story, 4-bay, pyramidal-roofed frame duplex house has a hip-roofed dormer on the front elevation. The hip-roofed porch is

United States Department of the Interior-National Park Service
 National Register of Historic Places Continuation Sheet
 Section Number 7 Page 20

MMM&I Historic District
 Berkeley County, West Virginia

ID	Address	Style	Date of Construction	Contributing Status	Architectural Description
					supported by Tuscan columns with a wood balustrade. There is a 2-story, hip-roofed rear porch with wood posts and a wood balustrade. The windows throughout have 1/1 double-hung sash, with shutters on the front elevation. There is a center brick chimney with a corbeled cap.
00160	626-626 1/2 S. New York Avenue	American Four Square	1912	Contributing	This 2-story, 4-bay, gable-roofed frame duplex house has a gable-end facade with cornice returns. The hip-roofed porch is supported by Tuscan columns with a wood balustrade. There is a 1-story, shed-roofed rear wing. The windows throughout have 1/1 double-hung sash. There are two interior brick chimneys with corbeled caps.
00161	620-622 S. New York Avenue	Vernacular	1935	Contributing	This 2-story, 4-bay, gable-roofed frame duplex house has a gable-end facade with cornice returns. The hip-roofed porch has a pedimented gable over the entrance and is supported by metal posts with a metal balustrade. There is a 1-story, shed-roofed rear wing. The windows throughout have 1/1 double-hung sash with wood frames. There are two interior brick chimneys with corbeled caps.
00166	636 S. New York Avenue	Vernacular	1930	Contributing	This 2-story, 4-bay, pyramidal-roofed duplex house has a tile cornice and hip-roofed dormers on the north, south, and east elevations. The first story is clad in rusticated concrete block and the second story is clad in plain concrete block. The hip-roofed porch has a pedimented gable over the entrance and is supported by molded concrete columns with Corinthian capitals. The house is trimmed with rusticated concrete block quoins. There is a 2-story, gable-roofed rear wing. The two Craftsman doors have rectangular transoms. The windows have 1/1 double-hung sash throughout with cement lintels and sills.
00167	703 S. New York Avenue	Vernacular/ Bungalow	1920	Contributing	This 2-story, 5-bay, hip-roofed house has a pedimented cross gable on the front elevation. The hip-roofed porch is supported by wood posts. There is a projecting polygonal bay on the first story of the front elevation. The center door has a rectangular transom. The windows throughout have 2/2 double-hung sash with wood frames. There is a 1-story, shed-roofed rear wing. There are two interior brick chimneys with corbeled caps.
00168	703 1/2 S. New York Avenue	Vernacular	1944	Contributing	This 2-story, 3-bay, gable-roofed frame house has a side-gabled roof and a 1-story, 1-bay front porch supported by turned wood posts with a plain wood balustrade. The house is trimmed with a molded cornice with returns and corner boards. There is a 1-story, shed-roofed ell on the rear of the house. The windows throughout have 2/2 double-hung sash with wood frames. There are 2 interior end

United States Department of the Interior-National Park Service
National Register of Historic Places Continuation Sheet
Section Number 7 Page 21

MMM&I Historic District
Berkeley County, West Virginia

ID	Address	Style	Date of Construction	Contributing Status	Architectural Description
					brick chimneys with corbeled caps on the north and south end of the house.
00169	707 S. New York Avenue	Vernacular	1952	Contributing	This 2-story, 3-bay, gable-roofed frame house has a side-gabled roof and a 1-story, 1-bay front porch supported by turned wood posts with a plain wood balustrade. The house is trimmed with a molded cornice with returns and corner boards. There is a 1-story, shed-roofed ell on the rear of the house. The windows throughout have 2/2 double-hung sash with wood frames. There are 2 interior end brick chimneys with corbeled caps on the north and south end of the house.
00170	705 S. New York Avenue	Vernacular	1880	Contributing	This 1-story, 3-bay, gable-roofed frame house has a side-gabled roof and a gable front portico supported by wood posts. The windows throughout have 6/6 double-hung sash. The door is paneled with 3 panes at its top. There is an exterior brick chimney with a corbeled cap on the south elevation.
00171	709 S. New York Avenue	Vernacular	1903	Contributing	This 2-story, 4-bay, gable-roofed house is built on an L plan and has a side-gabled roof and a cross-gabled rear ell. The roof has a box cornice with returns. There is a 1-story, shed-roofed rear wing clad in wood siding attached to the ell. The hip-roofed porch is supported by turned wood posts with jigsaw brackets and a stuccoed half wall with cement coping. The windows throughout have 2/2 double-hung sash. There is a gabled hood over a side door on the north end of the house. the interior brick chimney has a corbeled cap.
00172	713 S. New York Avenue	Vernacular	1915	Contributing	This 2-story, 3-bay, pyramidal-roofed house has a 2-story polygonal tower on the southeast corner and hip-roofed dormers on the east and north elevations. The roof has a molded cornice. The hip-roofed porch is supported by wood posts. The off-center door is paneled, and like the 1/1 double-hung sash windows throughout, has a molded wood frame. The dormer windows have diamond-paned upper sashes. There is a 1-story, shed-roofed rear wing on the house. The interior brick chimney has a corbeled cap.
00173	715 S. New York Avenue	American Four Square	1923	Contributing	This 2-story, 3-bay, gable-roofed frame house has a molded cornice with returns, and is trimmed with corner boards. There is a 1-story, shed-roofed rear ell attached to the house. The hip-roofed porch is supported by Tuscan columns, and the center door is paneled and has a rectangular transom. The windows throughout have 2/2 double-hung sash with wood frames. There are two interior end brick chimneys with corbeled caps.
00174	729 S. New York Avenue	Vernacular	1935	Contributing	This 2-story, 3-bay, gable-roofed frame house has a molded cornice with returns, and is

United States Department of the Interior-National Park Service
 National Register of Historic Places Continuation Sheet
 Section Number 7 Page 22

MMM&I Historic District
 Berkeley County, West Virginia

ID#	Address	Style	Date of Construction	Contributing Status	Architectural Description
					trimmed with corner boards. There is a 1-story, shed-roofed rear ell attached to the house. The hip-roofed porch is supported by Tuscan columns, and the center door is paneled and has a rectangular transom. The windows throughout have 2/2 double-hung sash with wood frames. There are two interior end brick chimneys with corbeled caps.
00175	731 S. New York Avenue	Vernacular	1915	Contributing	This 2-story, 3-bay, gable-roofed frame house is built on an L plan and has a side-gabled roof with a cross-gabled rear ell and a cross-gabled, 2-story projecting bay on the front elevation. The roof has molded cornice with returns throughout. The hip-roofed porch is supported by turned wood posts with jigsaw brackets. The center door is paneled with a single pane window on the top half. The windows throughout have 2/2 double-hung sash with working wood shutters. The two interior end brick chimneys have corbeled caps.
00176	733 S. New York Avenue	Vernacular/ Cape Cod	1940	Contributing	This 2-story, 5-bay, gable-roofed frame house is built on an L plan and has a side-gabled roof with a cross-gabled rear ell and a cross-gable on the front elevation. The roof has molded cornice with returns throughout. The hip-roofed porch is supported by turned wood posts with a shingle-clad half wall. The center door is a Craftsman style door. The windows throughout have 2/2 double-hung sash. There is a shed-roofed side porch on the south end, which is supported by turned wood posts and is decorated with lattice work. The three interior brick chimneys have corbeled caps.
00177	801 S. New York Avenue	Vernacular	1920	Contributing	This 2-story, 3-bay, gable-roofed frame house has a gable front roof with a molded cornice and returns. The shed-roofed porch is supported by tapered wood posts with a shingle-clad half wall. The center door is a Craftsman style door with a rectangular transom. The windows throughout have 2/2 double-hung sash with wood frames, with shutters on the front elevation. There is a 1-story, shed-roofed rear wing. The two interior brick chimneys have corbeled caps.
00178	803 S. New York Avenue	Vernacular	1920	Contributing	This 2-story, 3-bay, gable-roofed frame house has a side-gabled roof and a 1-story, 1-bay front porch supported by turned wood posts with a plain wood balustrade. The house is trimmed with a molded cornice with returns and corner boards. There is a 1-story, shed-roofed ell on the rear of the house. The windows throughout have 2/2 double-hung sash with wood frames. There are 2 interior end brick chimneys with corbeled caps on the north and south end of the house.
00179	809-811 S. New	American Four	1910	Contributing	This 2-story, 2-bay, gable-roofed frame house

United States Department of the Interior-National Park Service
National Register of Historic Places Continuation Sheet
Section Number 7 Page 23

MMM&I Historic District
Berkeley County, West Virginia

ID#	Address	Style	Date of Construction	Contributing Status	Architectural Description
	York Avenue	Square			has a gable front roof with a box cornice and returns. The shed-roofed awning above the door is supported by metal posts with a metal balustrade. The windows throughout have 1/1 double-hung sash. There is a 1-story, gable-roofed rear wing attached to the house. The interior brick chimney has a corbeled cap.
00180	817 S. New York Avenue	Vernacular	1900	Contributing	This 2-story, 2-bay, gable-roofed frame house has a gable front roof with a box cornice and returns. The shed-roofed awning above the door is supported by metal posts with a metal balustrade. The windows throughout have 1/1 double-hung sash. There is a 1-story, gable-roofed rear wing attached to the house. The interior brick chimney has a corbeled cap.
00181	825 S. New York Avenue	Vernacular/ Bungalow	1920	Contributing	This 2-story, 4-bay, gable-roofed frame house has a side-gabled roof with a box cornice and covered returns. The shed-roofed porch is supported by turned wood posts with a metal balustrade. The windows throughout have 1/1 double-hung sash with molded wood frames. There are two 1-story, shed-roofed wings attached to the house on the east end. There is an interior brick chimney.
00182	829 S. New York Avenue	Vernacular	1910	Contributing	This 1.5-story, 2-bay, gable-roofed frame house has a side-gabled roof with knee braces and a gable front dormer, also with knee braces. The roof extends to form the front porch, which is supported by tapered wood posts on a concrete block half wall with cement coping. The roof cornice is molded. The windows throughout have 1/1 double-hung sash. There is a 1-story, shed-roofed wing on the rear of the house. The interior brick chimney has a corbeled cap.
00183	831 S. New York Avenue	Vernacular	1910	Contributing	This 2-story, 3-bay, gable-roofed frame house has a gable front roof with a box cornice and returns. The front door has a pedimented molding with urn finial and fluted pilasters. There is a shed-roofed overhang on the south elevation above a projecting polygonal bay window. The south elevation has brick veneer along the lower half of the first story. The windows throughout have 2/2 double-hung sash. The interior chimney has a corbeled cap.
00184	833 S. New York Avenue	Vernacular	1920	Contributing	This 2-story, 3-bay, gable-roofed frame house has a gable front roof with a box cornice and returns. The front door has a pedimented molding with urn finial and fluted pilasters. There is a shed-roofed overhang on the south elevation above a projecting polygonal bay window. The south elevation has brick veneer along the lower half of the first story. The windows throughout have 2/2 double-hung sash. The interior chimney has a corbeled cap.
00185	835 S. New York Avenue	Vernacular	1914	Contributing	This 2-story, 2-bay, pyramidal-roofed frame house has a hip-roofed dormer on the front

United States Department of the Interior-National Park Service
 National Register of Historic Places Continuation Sheet
 Section Number 7 Page 24

MMM&I Historic District
 Berkeley County, West Virginia

ID	Address	Style	Date of Construction	Contributing Status	Architectural Description
					elevation. The hip-roofed porch is supported by metal posts with a metal balustrade. The windows throughout have 1/1 double-hung sash. There is a 1-story, gable-roofed rear wing attached to the house. The center brick chimney has a corbeled cap.
00186	837 S. New York Avenue	Vernacular	1930	Contributing	This 2-story, 3-bay, gable-roofed frame house has a side-gabled roof with a pedimented cross gable on the front elevation, and a molded cornice with returns. The 2-story, flat-roofed porch is supported by metal posts with a concrete block half wall on the first story and a metal balustrade on the second story. The windows throughout have 1/1 double-hung sash with molded surrounds and modern shutters. There is a 1-story, shed-roofed rear ell on the house. The 2 interior end brick chimneys have corbeled caps.
00002	927 S. Raleigh Street	Vernacular	1899	Contributing	This 2-story, 2-bay, pyramidal-roofed frame house has a hip-roofed dormer on the front elevation. The hip-roofed porch is supported by brick posts. The windows throughout have modern 1/1 double-hung sash. There is an exterior brick chimney with a corbeled cap on the north end of the house.
00003	925 S. Raleigh Street	Vernacular	1920	Contributing	This 2-story, 2-bay, gable-roofed frame house has a gable-end facade with a box cornice and returns. The entrance is topped by a 1-story, 1-bay, shed-roofed aluminum awning supported by metal posts. The windows throughout have 1/1 double-hung sash. There is a 1-story, shed-roofed porch supported by metal posts on the rear of the house. There is a center brick chimney.
00004	915 S. Raleigh Street	Vernacular/ Craftsman	1911	Contributing	This 2-story, 2-bay, gable-roofed frame house has a gable-end facade with a box cornice and returns. The hip-roofed porch has been enclosed and has modern 1/1 double-hung sash windows and a vinyl-clad half wall. The windows throughout have 1/1 double-hung sash. There is a 1-story, gable-roofed rear ell on the house. This ell has a shed-roofed side porch. The interior brick chimney has a corbeled cap.
00005	913 S. Raleigh Street	Vernacular	1919	Contributing	This 1-story, 3-bay, gable-roofed frame house is built on an L plan and has a side-gabled roof and a 1-story, hip-roofed porch supported by turned wood posts with a modern wood balustrade. The windows throughout have 1/1 double-hung sash. The interior brick chimney has a corbeled cap.
00006	911 S. Raleigh Street	Bungalow	1935	Contributing	This 2.5-story, 4-bay, gable-roofed frame duplex house has a pedimented gable-end facade with a molded cornice and returns. The shed-roofed porch is supported by a metal post on the south end, and is enclosed on the north

United States Department of the Interior-National Park Service
 National Register of Historic Places Continuation Sheet
 Section Number 7 Page 25

MMM&I Historic District
 Berkeley County, West Virginia

ID	Address	Style	Date of Construction	Contributing Status	Architectural Description
					end. The windows throughout have 2/2 and modern 1/1 double-hung sash with wood sills. There is a 1-story, shed-roofed ell on the rear of the house. There are 2 interior brick chimneys, one with a corbeled cap.
00007	903 S. Raleigh Street	Vernacular/ Craftsman	1934	Contributing	This 2.5-story, 4-bay, gable-roofed frame duplex house has a pedimented gable-end facade with a molded cornice and returns. The shed-roofed porch is supported by a metal post on the south end, and is enclosed on the north end. The windows throughout have 2/2 and modern 1/1 double-hung sash with wood sills. There is a 1-story, shed-roofed ell on the rear of the house. There are 2 interior brick chimneys, one with a corbeled cap.
00008	827 S. Raleigh Street	Craftsman	1922	Contributing	This 1.5-story, 3-bay, gable-roofed frame house is built on an L plan, and has a side-gabled roof with a gable front cross gable. The roof has a molded cornice with returns. The roof extends to form the front porch, which is supported by tapered wood posts on stone-faced bases, with a wood balustrade. The windows throughout have 1/1 double-hung sash with shutters. There is an interior brick chimney.
00009	823 S. Raleigh Street	Vernacular	1920	Contributing	This 1.5-story, 2-bay, gable-roofed brick house has a side-gabled roof with full-width shed-roofed dormers on the front and back elevations. The shed-roofed porch is supported by brick posts on brick bases with a brick half wall and cement coping. The off-center door is a Craftsman style door. The windows throughout have 3/1 double-hung sash with brick jack arches and sills. The windows are often paired. The rear porch has a shed roof and is supported by brick posts. There is a side entrance covered by a gabled hood. The exterior brick chimney has decorative brick patterns.
00010	819 S. Raleigh Street	Vernacular	Circa 1920	Contributing	This 3-story, 4-bay, frame duplex house has a hip-on-Mansard roof, with gable-roofed shallow dormers on all sides. There is a 2-story, shed-roofed wing on the west side of the house. There are 2 pedimented porticos supported by Tuscan columns on concrete block bases on the front of the house. The windows have 6/6 and 4/4 double-hung sash, with shutters on the first two stories.
00011	815 S. Raleigh Street	Vernacular	1940	Contributing	This 2-story, 3-bay, gable-roofed frame house is built on a T plan and has a side-gabled roof with a molded cornice and returns. The north and south ends of the house are polygonal, and the roof overhangs each. There is a gable-front cross gable on the front elevation. The hip-roofed porch is supported by metal posts with a metal balustrade. The windows on the main house block have 1/1 double-hung sash, on the

United States Department of the Interior-National Park Service
 National Register of Historic Places Continuation Sheet
 Section Number 7 Page 26

MMM&I Historic District
 Berkeley County, West Virginia

ID#	Address	Style	Date of Construction	Contributing Status	Architectural Description
					2-story rear ell have 1/1 and banked 3/1. There is an enclosed shed-roofed porch on the ell. The interior brick chimney has a corbeled cap.
00012	813 S. Raleigh Street	Vernacular	1935	Contributing	This 2-story, 3-bay, gable-roofed frame house is built on an L plan and has a side-gabled roof with cornice returns. There is a gable front cross gable on the front elevation of the house. The hip-roofed porch is supported by metal posts. The 1/1 double-hung sash windows have shutters on the front elevation. There is an incised entry on the south side of the 2-story, gable-roofed rear ell. The 2 interior brick chimneys have corbeled caps.
00013	807 S. Raleigh Street	Vernacular	1940	Contributing	This 2-story, 3-bay, pyramidal-roofed house has a hip-roofed dormer on the front elevation and a molded cornice. The hip-roofed porch is supported by tapered wood posts on rusticated concrete block bases with a rusticated concrete block half wall and cement coping. The center door is paneled with shelf molding and mouse tooth detailing. There is a water table below the first story. The 1/1 double-hung sash windows have molded frames, with awnings on the second story of the front elevation.
00014	803 S. Raleigh Street	Vernacular	1957	Contributing	This 2-story, 3-bay, gable-roofed frame house is built on an L plan and has a side-gabled roof with cornice returns. There is a gable front cross gable on the front elevation of the house. The hip-roofed porch is supported by metal posts. The 1/1 double-hung sash windows have shutters on the front elevation. There is an incised entry on the south side of the 2-story, gable-roofed rear ell. The 2 interior brick chimneys have corbeled caps.
00015	801 S. Raleigh Street	Vernacular	1943	Contributing	This 2-story, 2-bay, pyramidal-roofed frame house has a molded cornice, a hip-roofed dormer and a 1-story, gable-roofed rear ell. The off-center hip-roofed porch is supported by metal posts with a metal balustrade. The 1/1 double-hung sash windows have wood frames, with drip caps on the first story.
00255	735 S. Raleigh Street	Vernacular	1900	Contributing	This 2-story, 4-bay, gable-roofed house is built on an L plan and has a side-gabled roof and a cross-gabled rear ell. The roof has a box cornice with returns. There is a 1-story, shed-roofed rear wing clad in wood siding attached to the ell. The hip-roofed porch is supported by turned wood posts with jigsaw brackets and a stuccoed half wall with cement coping. The windows throughout have 2/2 double-hung sash. There is a gabled hood over a side door on the north end of the house. the interior brick chimney has a corbeled cap.
00256	731 S. Raleigh Street	Queen Anne	1909	Contributing	This 2-story, 3-bay, pyramidal-roofed house has a 2-story polygonal tower on the southeast corner and hip-roofed dormers on the east and

United States Department of the Interior-National Park Service
 National Register of Historic Places Continuation Sheet
 Section Number 7 Page 27

MMM&I Historic District
 Berkeley County, West Virginia

ID#	Address	Style	Date of Construction	Contributing Status	Architectural Description
					north elevations. The roof has a molded cornice. The hip-roofed porch is supported by wood posts. The off-center door is paneled, and like the 1/1 double-hung sash windows throughout, has a molded wood frame. The dormer windows have diamond-paned upper sashes. There is a 1-story, shed-roofed rear wing on the house. The interior brick chimney has a corbeled cap.
00257	727 S. Raleigh Street	Vernacular	1911	Contributing	This 2-story, 3-bay, gable-roofed frame house has a molded cornice with returns, and is trimmed with corner boards. There is a 1-story, shed-roofed rear ell attached to the house. The hip-roofed porch is supported by Tuscan columns, and the center door is paneled and has a rectangular transom. The windows throughout have 2/2 double-hung sash with wood frames. There are two interior end brick chimneys with corbeled caps.
00258	723 S. Raleigh Street	Vernacular	1907	Contributing	This 2-story, 3-bay, gable-roofed frame house has a molded cornice with returns, and is trimmed with corner boards. There is a 1-story, shed-roofed rear ell attached to the house. The hip-roofed porch is supported by Tuscan columns, and the center door is paneled and has a rectangular transom. The windows throughout have 2/2 double-hung sash with wood frames. There are two interior end brick chimneys with corbeled caps.
00259	719 S. Raleigh Street	Vernacular Gothic Revival	1910	Contributing	This 2-story, 3-bay, gable-roofed frame house is built on an L plan and has a side-gabled roof with a cross-gabled rear ell and a cross-gabled, 2-story projecting bay on the front elevation. The roof has molded cornice with returns throughout. The hip-roofed porch is supported by turned wood posts with jigsaw brackets. The center door is paneled with a single pane window on the top half. The windows throughout have 2/2 double-hung sash with working wood shutters. The two interior end brick chimneys have corbeled caps.
00260	713 S. Raleigh Street	Vernacular	1903	Contributing	This 2-story, 5-bay, gable-roofed frame house is built on an L plan and has a side-gabled roof with a cross-gabled rear ell and a cross-gable on the front elevation. The roof has molded cornice with returns throughout. The hip-roofed porch is supported by turned wood posts with a shingle-clad half wall. The center door is a Craftsman style door. The windows throughout have 2/2 double-hung sash. There is a shed-roofed side porch on the south end, which is supported by turned wood posts and is decorated with lattice work. The three interior brick chimneys have corbeled caps.
00261	711 S. Raleigh Street	Vernacular	1903	Contributing	This 2-story, 3-bay, gable-roofed frame house has a gable front roof with a molded cornice

United States Department of the Interior-National Park Service
 National Register of Historic Places Continuation Sheet
 Section Number 7 Page 28

MMM&I Historic District
 Berkeley County, West Virginia

ID#	Address	Style	Date of Construction	Contributing Status	Architectural Description
					and returns. The shed-roofed porch is supported by tapered wood posts with a shingle-clad half wall. The center door is a Craftsman style door with a rectangular transom. The windows throughout have 2/2 double-hung sash with wood frames, with shutters on the front elevation. There is a 1-story, shed-roofed rear wing. The two interior brick chimneys have corbeled caps.
00262	707 S. Raleigh Street	Vernacular	1933	Contributing	This 2-story, 3-bay, gable-roofed frame house has a side-gabled roof and a 1-story, 1-bay front porch supported by turned wood posts with a plain wood balustrade. The house is trimmed with a molded cornice with returns and corner boards. There is a 1-story, shed-roofed ell on the rear of the house. The windows throughout have 2/2 double-hung sash with wood frames. There are 2 interior end brick chimneys with corbeled caps on the north and south end of the house.
00263	703 S. Raleigh Street	Vernacular	1913	Contributing	This 2-story, 2-bay, gable-roofed frame house has a gable front roof with a box cornice and returns. The shed-roofed awning above the door is supported by metal posts with a metal balustrade. The windows throughout have 1/1 double-hung sash. There is a 1-story, gable-roofed rear wing attached to the house. The interior brick chimney has a corbeled cap.
00264	701 S. Raleigh Street	Vernacular	1910	Contributing	This 2-story, 2-bay, gable-roofed frame house has a gable front roof with a box cornice and returns. The shed-roofed awning above the door is supported by metal posts with a metal balustrade. The windows throughout have 1/1 double-hung sash. There is a 1-story, gable-roofed rear wing attached to the house. The interior brick chimney has a corbeled cap.
00265	711 1/2 S. Raleigh Street	Vernacular	1903	Contributing	This 2-story, 4-bay, gable-roofed frame house has a side-gabled roof with a box cornice and covered returns. The shed-roofed porch is supported by turned wood posts with a metal balustrade. The windows throughout have 1/1 double-hung sash with molded wood frames. There are two 1-story, shed-roofed wings attached to the house on the east end. There is an interior brick chimney.
00266	500 Baker Street	Bungalow	1932	Contributing	This 1.5-story, 2-bay, gable-roofed frame house has a side-gabled roof with knee braces and a gable front dormer, also with knee braces. The roof extends to form the front porch, which is supported by tapered wood posts on a concrete block half wall with cement coping. The roof cornice is molded. The windows throughout have 1/1 double-hung sash. There is a 1-story, shed-roofed wing on the rear of the house. The interior brick chimney has a corbeled cap.
00267	641 S. Raleigh	Vernacular	1920	Contributing	This 2-story, 3-bay, gable-roofed frame house

United States Department of the Interior-National Park Service
 National Register of Historic Places Continuation Sheet
 Section Number 7 Page 29

MMM&I Historic District
 Berkeley County, West Virginia

ID#	Address	Style	Date of Construction	Contributing Status	Architectural Description
	Street				has a gable front roof with a box cornice and returns. The front door has a pedimented molding with urn finial and fluted pilasters. There is a shed-roofed overhang on the south elevation above a projecting polygonal bay window. The south elevation has brick veneer along the lower half of the first story. The windows throughout have 2/2 double-hung sash. The interior chimney has a corbeled cap.
00268	639 S. Raleigh Street	Vernacular	1930	Contributing	This 2-story, 3-bay, gable-roofed frame house has a gable front roof with a box cornice and returns. The front door has a pedimented molding with urn finial and fluted pilasters. There is a shed-roofed overhang on the south elevation above a projecting polygonal bay window. The south elevation has brick veneer along the lower half of the first story. The windows throughout have 2/2 double-hung sash. The interior chimney has a corbeled cap.
00269	613 S. Raleigh Street	American Four Square	1943	Contributing	This 2-story, 2-bay, pyramidal-roofed frame house has a hip-roofed dormer on the front elevation. The hip-roofed porch is supported by metal posts with a metal balustrade. The windows throughout have 1/1 double-hung sash. There is a 1-story, gable-roofed rear wing attached to the house. The center brick chimney has a corbeled cap.
00270	611 S. Raleigh Street	Vernacular	1943	Contributing	This 2-story, 3-bay, gable-roofed frame house has a side-gabled roof with a box cornice. The shed-roofed porch is supported by tapered wood posts with an aluminum-clad half wall. There is a 1-story, shed-roofed rear porch supported by wood posts. The windows throughout have 1/1 double-hung sash. There is an interior brick chimney.
00271	607 S. Raleigh Street	Ranch	1950	Contributing	This 1-story, 4-bay, gable-roofed brick house has a side-gabled roof with a plain cornice. The shed-roofed porch awning is supported by metal posts with a metal balustrade. There is a 1-story, gable-roofed wing on the south end of the house. The windows throughout have 1/1 sliding sash with shutters.
00272	605 S. Raleigh Street	Vernacular/ Colonial Revival	1938	Contributing	This 2-story, 3-bay, gable-roofed brick house has a side-gabled roof with a plain cornice. The gable-roofed portico has an arched opening and is supported by metal posts with a metal balustrade. The front door is paneled and has an elliptical fanlight and 4-pane sidelights. There is a 1-story, shed-roofed, brick rear wing on the house, and a 1-story, shed-roofed wing on the north end of the house clad in wood siding. The windows throughout have 1/1 double-hung sash with brick jack arches and sills. There is an exterior brick chimney with a corbeled cap on the north end of the house.
00274	623 1/2 S. Virginia	Vernacular	1930	Contributing	This 2-story, 3-bay, gable-roofed frame house

United States Department of the Interior-National Park Service
National Register of Historic Places Continuation Sheet
Section Number 7 Page 30

MMM&I Historic District
Berkeley County, West Virginia

ID	Address	Style	Date of Construction	Contributing Status	Architectural Description
	Avenue				is oriented south and has a side-gabled roof. There is a 1-story, shed-roofed wing on the east side of the house. The shed-roofed porch has been enclosed by wood paneling and has 6/6 double-hung sash windows. The remaining windows have 1/1 double-hung sash. There is an interior corbeled brick chimney.
00275	629 S. Virginia Avenue Rear	Vernacular	1920	Contributing	This 2-story, 3-bay, gable-roofed frame house is built on an L plan and has a side-gabled roof with a molded cornice and returns. The house is trimmed with corner boards. There is a 1-story, shed-roofed ell on the north side of the house. The shed-roofed porch is supported by wood posts with a wood balustrade. The windows have 6/1 double-hung sash with wood frames. There is an exterior concrete block chimney.
00020	934 S. Virginia Avenue	Vernacular	1954	Contributing	This 2-story, 2-bay, gable-roofed frame house has a gable-end facade with covered cornice returns. The flared hipped porch roof is supported by turned wood posts with jigsaw and spindle brackets. The windows throughout have 1/1 double-hung sash. The center brick chimney has a corbeled cap.
00021	930 S. Virginia Avenue	Vernacular	1919	Contributing	This 2-story, 2-bay, gable-roofed frame house is built on a modified L plan and has a gable front roof with a molded cornice, returns, and trimmed with corner boards. The hip-roofed porch is supported by Tuscan columns with a wood balustrade. There is a 2-story, shed-roofed porch on the south elevation, with turned wood posts and a plain wood balustrade on the second story. The windows throughout have 1/1 double-hung sash with molded wood frames.
00022	914 S. Virginia Avenue	Colonial Revival/ American Four Square	1910	Contributing	This 1.5-story, 2-bay, gambrel-roofed house has a side-gabled roof with a molded cornice and shed-roofed returns, and a smaller-scale gambrel-roofed rear projecting bay. There are pedimented gabled dormers on the front elevation. The off-center Craftsman style door is within an incised porch on the northeast corner of the house. This porch is supported by a tapered Tuscan column on a brick base, with lattice work decoration on the north end of the porch. The 6/1 double-hung sash windows have molded frames throughout, and wood shingles on the front elevation. The center brick chimney has a corbeled cap.
00023	910 S. Virginia Avenue	Vernacular Queen Anne	1912	Contributing	This 2-story, 2-bay, gable-roofed brick house has a gable-end facade with molded cornice and a Palladian window on the gable end. There is a hip-roofed dormer on the south elevation. There is a 1-story, shed-roofed rear ell on the house. The hip-roofed porch has a pedimented cross gable and is supported by brick posts on brick bases with a brick half wall

United States Department of the Interior-National Park Service
National Register of Historic Places Continuation Sheet
Section Number 7 Page 31

MMM&I Historic District
Berkeley County, West Virginia

ID	Address	Style	Date of Construction	Contributing Status	Architectural Description
					and cement coping. The windows throughout have 4/1 double-hung sash with brick jack arches and sills. The interior brick chimney has a corbeled cap.
00024	900 S. Virginia Avenue	Vernacular	Circa 1900	Contributing	This 2-story, 4-bay, pyramidal-roofed duplex house has a molded cornice and hip-roofed dormers on the north, south, and east elevations. There are rusticated concrete block quoins of a lighter color than the rest of the exterior. The hip-roofed porch is supported by wood columns with Corinthian capitals on Rusticated concrete block bases, with a rusticated concrete block half wall with cement coping. The windows throughout have 1/1 double-hung sash with cement lintels and sills. There is a 2-story, hip-roofed rear ell. The 2 brick interior chimneys have corbeled caps.
00025	832 S. Virginia Avenue	Vernacular Queen Anne	1916	Contributing	This 2-story, 4-bay, gable-roofed frame house is built on an L plan and has a gable front roof with a hip-roofed ell. The roof has a molded cornice, returns, and gingerbread eaves on the front elevation. The roof overhangs the front facade and has acorn pendants, dentil molding, and brackets, and is clad in wood shingles in the gable end. The second story of the front elevation has a paneled projecting polygonal bay. There is a 1-story, shed-roofed rear ell. The hip-roofed wrap-around porch has by Tuscan columns with a half wall. There are 1/1 double-hung sash windows throughout and a rectangular door transom.
00026	828 S. Virginia Avenue	Vernacular	1920	Contributing	This 2-story, 4-bay, gable-roofed frame duplex house has a gable-end facade with covered cornice returns. There is a 2-story, gable-roofed rear ell. The hip-roofed porch is supported by tapered wood posts with a wood half wall. The 1/1 double-hung sash windows are often paired. There are picture windows on the first story of the front elevation. There is a center brick chimney.
00027	826 S. Virginia Avenue	Vernacular	1915	Contributing	This 2-story, 2-bay, gable-roofed frame house has a gable-end facade with a molded cornice and returns. The hip-roofed porch is supported by Tuscan columns with a wood balustrade. There is a 1-story, shed-roofed rear ell. The windows throughout have 1/1 double-hung sash, with shutters on the front elevation. The center brick chimney has a corbeled cap.
00028	814 S. Virginia Avenue	American Four Square	1946	Contributing	This 2-story, 2-bay, gable-roofed frame house has a gable-end facade with returns. The hip-roofed porch is supported by turned wood posts with a wood balustrade. The off-center Craftsman style door has a rectangular transom. The 1/1 double-hung sash windows have shutters on the front elevation. There is a 1-story, shed-roofed rear ell. The center brick

United States Department of the Interior-National Park Service
 National Register of Historic Places Continuation Sheet
 Section Number 7 Page 32

MMM&I Historic District
 Berkeley County, West Virginia

ID#	Address	Style	Date of Construction	Contributing Status	Architectural Description
					chimney has a corbeled cap.
00029	810 S. Virginia Avenue	American Four Square	1941	Contributing	This 2-story, 2-bay, gable-roofed frame house has a gable-end facade with a molded cornice and returns. The hip-roofed porch is supported by turned wood posts with a wood balustrade. The windows throughout have 1/1 double-hung sash with wood frames. The 2-story, cross-gabled ell has a gable-roofed hood over the side entryway. The interior brick chimney has a corbeled cap.
00030	806 S. Virginia Avenue	Vernacular	Circa 1920	Contributing	This 2-story, 3-bay, gable-roofed frame house is built on an L plan and has a side-gabled roof. The hip-roofed porch is supported by metal posts with a metal balustrade. There is a 1-story, shed-roofed rear wing attached to the ell. The windows throughout have 1/1 double-hung sash, with shutters on the front elevation. There is an interior end brick chimney on the north end of the house.
00031	804 S. Virginia Avenue	Vernacular	Circa 1920	Contributing	This 2-story, 3-bay, gable-roofed frame house has a gable-end facade with cornice returns. The shed-roofed porch is supported by wood posts with a wood balustrade. There is a 1-story, shed-roofed, enclosed side porch. The windows have 2/1, 2/2, and 3/1 double-hung sash. There is a long, 1-story, low shed-roofed rear ell on the house.
00032	802 S. Virginia Avenue	Vernacular	1920	Contributing	This 2-story, 3-bay, gable-roofed frame house is built on an L plan and has a side-gabled roof with cornice returns. There is a cross gable on the front elevation, also with cornice returns. There is a projecting center bay on the first story of the front elevation. The hip-roofed porch is supported by fluted metal columns. The windows throughout have 1/1 double-hung sash. The rear ell has an enclosed shed-roofed porch. The interior end chimney has been covered with cement.
00033	800 S. Virginia Avenue	Vernacular	1910	Contributing	This 2-story, 3-bay, hip-roofed frame house is V-shaped, and has a 2-story hip-roofed porch, which is enclosed on the second story and is supported by metal posts with a metal balustrade. The entry is recessed and appears to have at one time been a storefront. The windows have 1/1 double-hung sash with shutters, with the exception of the picture windows on the front elevation. There is an aluminum awning over the side entry on the east side of the building. There is a center brick chimney.
00034	734-736 S. Virginia Avenue	Vernacular	1900	Contributing	This 2-story, 3-bay, hip-roofed frame house is V-shaped, and has a 2-story hip-roofed porch, which is enclosed on the second story and is supported by metal posts with a metal balustrade. The entry is recessed and appears to have at one time been a storefront. The

United States Department of the Interior-National Park Service
 National Register of Historic Places Continuation Sheet
 Section Number 7 Page 33

MMM&I Historic District
 Berkeley County, West Virginia

ID	Address	Style	Date of Construction	Contributing Status	Architectural Description
					windows have 1/1 double-hung sash with shutters, with the exception of the picture windows on the front elevation. There is an aluminum awning over the side entry on the east side of the building. There is a center brick chimney.
00035	732 S. Virginia Avenue	Vernacular Queen Anne	1910	Contributing	This 2-story, 2-bay, gable-roofed house has a gable-end facade with molded cornice and returns. The second story is clad in wood shingles, and flares at the bottom, where it is joined to the brick first story by a wood belt course. The hip-roofed porch is supported by Tuscan columns. There is a projecting polygonal bay window on the first story of the front elevation. The door surround is fluted with corner blocks. The windows throughout have 6/6 double-hung sash with wood frames on the second story and cement lintels and sills on the first story. There is a hip-roofed enclosed rear porch and a corbeled brick chimney.
00036	730 S. Virginia Avenue	Vernacular	1900	Contributing	This 2-story, 2-bay, gable-roofed house has a gable-end facade with molded cornice and returns. The second story is clad in wood shingles, and flares at the bottom, where it is joined to the brick first story by a wood belt course. The hip-roofed porch is supported by Tuscan columns. There is a projecting polygonal bay window on the first story of the front elevation. The door surround is fluted with corner blocks. The windows throughout have 6/6 double-hung sash with wood frames on the second story and cement lintels and sills on the first story. There is a hip-roofed enclosed rear porch and a corbeled brick chimney.
00037	710 S. Virginia Avenue	Vernacular	1900	Contributing	This 2-story, 2-bay, gable-roofed house has a gable-end facade with molded cornice and returns. The second story is clad in wood shingles, and flares at the bottom, where it is joined to the brick first story by a wood belt course. The hip-roofed porch is supported by Tuscan columns. There is a projecting polygonal bay window on the first story of the front elevation. The door surround is fluted with corner blocks. The windows throughout have 6/6 double-hung sash with wood frames on the second story and cement lintels and sills on the first story. There is a hip-roofed enclosed rear porch and a corbeled brick chimney.
00038	708 S. Virginia Avenue	Vernacular	1900	Contributing	This 2-story, 2-bay, hip-roofed house has a cross gable on the rear and a centered cross gable on the front elevation. The hip-roofed porch is supported by Tuscan columns with a metal balustrade. The 1/1 double-hung sash

United States Department of the Interior-National Park Service
 National Register of Historic Places Continuation Sheet
 Section Number 7 Page 34

MMM&I Historic District
 Berkeley County, West Virginia

ID#	Address	Style	Date of Construction	Contributing Status	Architectural Description
					windows have cement lintels and sills, and shutters throughout. The interior brick chimney has a corbeled cap.
00039	706 1/2 S. Virginia Avenue	Vernacular/ Craftsman	1928	Contributing	This 2-story, 3-bay, gable-roofed frame house is built on an L plan and has a side-gabled roof with a cross gable on the front elevation. The roof has a molded cornice with returns. The hip-roofed porch is supported by Tuscan columns. The windows throughout have 1/1 double-hung sash, with shutters on the front elevation. There are 2 interior end brick chimneys with corbeled caps.
00040	706 S. Virginia Avenue	Vernacular	Circa-1920	Contributing	This 2-story, 3-bay, gable-roofed frame house has a side-gabled roof and a 1-story, 1-bay front porch supported by turned wood posts with a plain wood balustrade. The house is trimmed with a molded cornice with returns and corner boards. There is a 1-story, shed-roofed ell on the rear of the house. The windows throughout have 2/2 double-hung sash with wood frames. There are 2 interior end brick chimneys with corbeled caps on the north and south end of the house.
00041	704 1/2 S. Virginia Avenue	Vernacular	1973	Non-Contributing	This 1-story, 3-bay, gable-roofed frame house has a gable-end facade and a gable front porch supported by tapered wood posts on brick bases with a wood balustrade. The roof has exposed rafter tails. The off-center door is Craftsman style, and the windows throughout have 3/1 or 4/1 double-hung sash with shutters. The interior brick chimney has a corbeled cap.
00042	704 S. Virginia Avenue	American Four Square	1920	Contributing	This 2-story, 3-bay, pyramidal-roofed frame house has a projecting cross-gable rear ell and a pedimented cross gable on the front. The molded cornice has returns. There is a 1-story, gable-roofed rear wing with an incised porch. The hip-roofed wrap-around porch has a pedimented gable and is supported by Tuscan columns with a wood balustrade. The off-center door has sidelights. The 1/1 double-hung sash windows have molded frames. The center brick chimney has a corbeled cap.
00043	700-702 S. Virginia Avenue	American Four Square	1920	Contributing	This 2-story, 3-bay, gable-roofed frame house is built on a T plan and has a gable front facade with a cross-gabled rear ell. The roof has cornice returns. The wrap-around, hip-roofed porch is enclosed on the north and south ends, and is supported by tapered wood posts. There is a 1-story, shed-roofed rear wing. The windows throughout have 1/1 double-hung sash, with awnings on the front elevation. The center brick chimney has a corbeled cap.
00044	640 S. Virginia Avenue	American Four Square	1935	Contributing	This 1.5-story, 4-bay, gable-roofed house has a gable-end facade and a shed-roofed dormer on the south elevation. The hip-roofed porch is supported by metal posts with a metal

United States Department of the Interior-National Park Service
 National Register of Historic Places Continuation Sheet
 Section Number 7 Page 35

MMM&I Historic District
 Berkeley County, West Virginia

ID	Address	Style	Date of Construction	Contributing Status	Architectural Description
					balustrade. There are picture windows on the front elevation, and 1/1 double-hung sash windows elsewhere. The front windows have shutters. The two front doors are paneled with 4-pane windows. The interior brick chimney has a corbeled cap.
00045	634 S. Virginia Avenue	Vernacular	1935	Contributing	This 1.5-story, 4-bay, gable-roofed frame house has a side-gabled roof with a cross-gabled dormer on the front elevation. The enclosed porch is contained within the main block of the house, and has jalousie windows. There is a projecting polygonal window bay on the front elevation. There is a 1-story, hip-roofed ell on the rear of the house. The windows throughout have 1/1 double-hung sash with shutters. There is a brick chimney with a corbeled cap on the gable end of the house.
00046	632 S. Virginia Avenue	Vernacular	1920	Contributing	This 2-story, 2-bay, gable-roofed frame house has a gable-end facade with a molded cornice and returns. There is a Palladian window in the gable end. The hipped L-shaped porch is supported by wood posts on a brick half wall. The windows have 1/1 double-hung sash with wood frames, and there is a diamond-shaped window on the south elevation. The front door has a rectangular transom. There are two interior brick chimneys with corbeled caps.
00047	628-630 S. Virginia Avenue	Vernacular	1924	Contributing	This 2-story, 3-bay, gable-roofed frame house has a side-gabled roof with a molded cornice and returns. The hip-roofed porch is supported by turned wood posts with a wooden balustrade. There is a 1-story, shed-roofed rear wing on the house. The center door is Craftsman style with a rectangular transom, and the windows have 3/1 double-hung sash. There are two interior end brick chimneys with corbeled caps.
00048	626 S. Virginia Avenue	Vernacular	1910	Contributing	This 2-story, 3-bay, gable-roofed brick house has a gable-end facade and a shed-roofed overhang between the first and second stories. This building appears to have been a former garage, as a picture window has been installed in a space approximately the size of a garage bay. The windows throughout have 3/1 double-hung sash, with awnings on the second story. The second-story gable-roofed rear porch is clad in asbestos.
00049	622-624 S. Virginia Avenue	Vernacular	1910	Contributing	This 1-story, 3-bay, gable-roofed brick house has a side-gabled roof trimmed with a wood cornice and rake boards and a cross-gabled rear ell. The entrance stoop is covered by an aluminum awning, as are the side porch, the 1/1 double-hung sash windows and the picture window on the front elevation. The house has soldier bond brick trim. There is an exterior corbeled brick chimney on the south elevation.

United States Department of the Interior-National Park Service
 National Register of Historic Places Continuation Sheet
 Section Number 7 Page 36

MMM&I Historic District
 Berkeley County, West Virginia

ID#	Address	Style	Date of Construction	Contributing Status	Architectural Description
00050	618-620 S. Virginia Avenue	Vernacular	1910	Contributing	This 2-story, 3-bay, gable-roofed frame house has a side-gabled roof with a box cornice and returns. The center door has a Greek Revival hood molding with Tuscan pilasters and a pedimented hood. There is a 1-story, hip-roofed, enclosed side porch on the north end of the house. This porch has a rectangular transom over the door and Tuscan columns support the roof. The windows throughout have 6/1 double-hung sash with wood frames. The center brick chimney has a corbeled cap.
00051	616 S. Virginia Avenue	Vernacular	1910	Contributing	This 2-story, 3-bay, hip- and gable-roofed frame house is built on a modified L plan with a hipped roof comprising most of the main house block and front and rear ell cross gables. The roof has a molded cornice, with returns on the cross gables. The gable front cross gable is clad in fish scale shingles on the gable end and tops a 2-story projecting polygonal bay. The hip-roofed wrap-around porch is supported by Tuscan columns with a metal balustrade and is enclosed on the north end. The door has a rectangular transom. There is a 2-story, shed-roofed rear wing.
00052	614 S. Virginia Avenue	Vernacular	1905	Contributing	This 2-story, 3-bay, gable-roofed frame house is built on an L plan and has a side-gabled roof with a 2-story, cross-gabled rear ell and a gable front cross gable on the front elevation. The roof has a molded cornice and returns. The hip-roofed porch is supported by turned wood posts with a spindle balustrade. The entrance bay projects from the main block of the house on the first story. There is a hip-roofed side porch supported by turned wood posts. The windows throughout have 1/1 double-hung sash. There are two interior end brick chimneys with corbeled caps.
00053	610-612 S. Virginia Avenue	Vernacular	1910	Contributing	This 2-story, 3-bay, gable-roofed frame house is built on an L plan and has a side-gabled roof with a 2-story cross-gabled rear ell and a cross gable on the front elevation. The cornice returns have been covered. The hip-roofed porch is supported by metal posts with a metal balustrade. The windows throughout have 1/1 double-hung sash, with shutters on the front elevation. There is a gable-roofed hood over the side door. The entrance bay projects from the main house block on the first story. There is a corbeled brick interior end chimney on the south end of the house.
00054	600-604 S. Virginia Avenue/ 527-531 Addition Street	Vernacular	Circa 1910	Contributing	This 2-story, 3-bay, hip-roofed frame house is built on an L plan and has a gable-roofed rear ell. A 2-story projecting center bay is topped by a gable-roofed cross gable, with a molded cornice and returns. The gable end is clad in wood shingles and has an arched window with

United States Department of the Interior-National Park Service
National Register of Historic Places Continuation Sheet
Section Number 7 Page 37

MMM&I Historic District
Berkeley County, West Virginia

ID	Address	Style	Date of Construction	Contributor Status	Architectural Description
					molded surround. The shed-roofed porch is supported by turned wood posts with jigsaw spindle brackets. The windows throughout have 2/2 double-hung sash, with shutters on the front elevation.
00057	601 S. Virginia Avenue	Vernacular Queen Anne	1937	Contributing	This 2-story, 4-bay, gable-roofed frame duplex house has a gable-end facade with cornice returns. The hip-roofed porch is supported by Tuscan columns with a wood balustrade. There is a 1-story, shed-roofed rear wing. The windows throughout have 1/1 double-hung sash. There are two interior brick chimneys with corbeled caps.
00058	609 S. Virginia Avenue	Vernacular Queen Anne	1920	Contributing	This 2-story, 4-bay, gable-roofed frame duplex house has a gable-end facade with cornice returns. The hip-roofed porch has a pedimented gable over the entrance and is supported by metal posts with a metal balustrade. There is a 1-story, shed-roofed rear wing. The windows throughout have 1/1 double-hung sash with wood frames. There are two interior brick chimneys with corbeled caps.
00059	615 S. Virginia Avenue	American Four Square	1900	Contributing	This 1.5-story, 2-bay, gable-roofed frame house has a side-gabled roof with a gable front dormer. The hip-roofed porch is supported by metal posts with a metal balustrade. There is also a hip-roofed rear porch, which is supported by wood posts. The off-center door is Craftsman style, and the 1/1 double-hung sash windows have shutters on the front elevation. There is an interior brick chimney.
00060	617-619 S. Virginia Avenue	American Four Square	1900	Contributing	This 1-story, 3-bay, gable-roofed house has a gable front roof with weatherboard siding in the gable end. There is an aluminum awning supported by metal posts over the front door. The windows throughout have 1/1 sliding sash with brick sills. There is an interior brick chimney.
00061	612-623 S. Virginia Avenue	American Four Square	1900	Contributing	This 1-story, 3-bay, hip-roofed frame house has a hip-roofed dormer on the front elevation, and the roof extends to form the front porch, which is supported by tapered wood posts on brick bases with a wood balustrade. The off-center door is Craftsman style, as are the 3/1 double-hung sash windows throughout. All window and door openings have molded wood frames. There is a shed-roofed side porch supported by tapered wood posts on brick bases with a brick half wall. There is an interior brick chimney.
00062	627 S. Virginia Avenue	Vernacular	1920	Contributing	This 1.5-story, 3-bay, gable-roofed frame house has a side-gabled roof and a gable front dormer with an oriel on the front elevation. There is a second, smaller gable front dormer on the front elevation, as well. There is a shed-roofed awning with metal supports over the front door. The windows throughout have 6/6 double-hung

United States Department of the Interior-National Park Service
 National Register of Historic Places Continuation Sheet
 Section Number 7 Page 38

MMM&I Historic District
 Berkeley County, West Virginia

ID#	Address	Style	Date of Construction	Contributing Status	Architectural Description
					sash with wood frames. There is a 1-story, gable-roofed wing on the north end of the house. This section has 6/1 double-hung sash windows. There is an interior brick chimney.
00063	629 S. Virginia Avenue	Vernacular	1920	Contributing	This 2-story, 4-bay, pyramidal-roofed duplex house has a tile cornice and hip-roofed dormers on the north, south, and east elevations. The first story is clad in rusticated concrete block and the second story is clad in plain concrete block. The hip-roofed porch has a pedimented gable over the entrance and is supported by molded concrete columns with Corinthian capitals. The house is trimmed with rusticated concrete block quoins. There is a 2-story, gable-roofed rear wing. The two Craftsman doors have rectangular transoms. The windows have 1/1 double-hung sash throughout with cement lintels and sills.
00064	S. Virginia Avenue	Vernacular/ Colonial Revival	Circa 1920s	Contributing	This 2-story, 5-bay, hip-roofed house has a pedimented cross gable on the front elevation. The hip-roofed porch is supported by wood posts. There is a projecting polygonal bay on the first story of the front elevation. The center door has a rectangular transom. The windows throughout have 2/2 double-hung sash with wood frames. There is a 1-story, shed-roofed rear wing. There are two interior brick chimneys with corbeled caps.
00065	701-703 S. Virginia Avenue	Vernacular	1910	Contributing	This 2-story, 3-bay, gable-roofed frame house has a side-gabled roof and a 1-story, 1-bay front porch supported by turned wood posts with a plain wood balustrade. The house is trimmed with a molded cornice with returns and corner boards. There is a 1-story, shed-roofed ell on the rear of the house. The windows throughout have 2/2 double-hung sash with wood frames. There are 2 interior end brick chimneys with corbeled caps on the north and south end of the house.
00066	705 S. Virginia Avenue	American Four Square	1935	Contributing	This 2-story, 3-bay, gable-roofed frame house has a side-gabled roof and a 1-story, 1-bay front porch supported by turned wood posts with a plain wood balustrade. The house is trimmed with a molded cornice with returns and corner boards. There is a 1-story, shed-roofed ell on the rear of the house. The windows throughout have 2/2 double-hung sash with wood frames. There are 2 interior end brick chimneys with corbeled caps on the north and south end of the house.
00067	707 S. Virginia Avenue	American Four Square/Colonial Revival	1920	Contributing	This 1-story, 3-bay, gable-roofed frame house has a side-gabled roof and a gable front portico supported by wood posts. The windows throughout have 6/6 double-hung sash. The door is paneled with 3 panes at its top. There is an exterior brick chimney with a corbeled cap

United States Department of the Interior-National Park Service
National Register of Historic Places Continuation Sheet
Section Number 7 Page 39

MMM&I Historic District
Berkeley County, West Virginia

ID	Address	Style	Date of Construction	Contributing Status	Architectural Description
00068	709 S. Virginia Avenue	Vernacular Queen Anne	1900	Contributing	on the south elevation. This 2-story, 4-bay, gable-roofed house is built on an L plan and has a side-gabled roof and a cross-gabled rear ell. The roof has a box cornice with returns. There is a 1-story, shed-roofed rear wing clad in wood siding attached to the ell. The hip-roofed porch is supported by turned wood posts with jigsaw brackets and a stuccoed half wall with cement coping. The windows throughout have 2/2 double-hung sash. There is a gabled hood over a side door on the north end of the house. the interior brick chimney has a corbeled cap.
00069	711 S. Virginia Avenue	American Four Square	1937	Contributing	This 2-story, 3-bay, pyramidal-roofed house has a 2-story polygonal tower on the southeast corner and hip-roofed dormers on the east and north elevations. The roof has a molded cornice. The hip-roofed porch is supported by wood posts. The off-center door is paneled, and like the 1/1 double-hung sash windows throughout, has a molded wood frame. The dormer windows have diamond-paned upper sashes. There is a 1-story, shed-roofed rear wing on the house. The interior brick chimney has a corbeled cap.
00070	727-729 S. Virginia Avenue	American Four Square	1925	Contributing	This 2-story, 3-bay, gable-roofed frame house has a molded cornice with returns, and is trimmed with corner boards. There is a 1-story, shed-roofed rear ell attached to the house. The hip-roofed porch is supported by Tuscan columns, and the center door is paneled and has a rectangular transom. The windows throughout have 2/2 double-hung sash with wood frames. There are two interior end brick chimneys with corbeled caps.
00071	731 S. Virginia Avenue	Vernacular	Circa 1910	Contributing	This 2-story, 3-bay, gable-roofed frame house has a molded cornice with returns, and is trimmed with corner boards. There is a 1-story, shed-roofed rear ell attached to the house. The hip-roofed porch is supported by Tuscan columns, and the center door is paneled and has a rectangular transom. The windows throughout have 2/2 double-hung sash with wood frames. There are two interior end brick chimneys with corbeled caps.
00072	735 S. Virginia Avenue	Vernacular	1904	Contributing	This 2-story, 3-bay, gable-roofed frame house is built on an L plan and has a side-gabled roof with a cross-gabled rear ell and a cross-gabled, 2-story projecting bay on the front elevation. The roof has molded cornice with returns throughout. The hip-roofed porch is supported by turned wood posts with jigsaw brackets. The center door is paneled with a single pane window on the top half. The windows throughout have 2/2 double-hung sash with working wood shutters. The two interior end

United States Department of the Interior-National Park Service
 National Register of Historic Places Continuation Sheet
 Section Number 7 Page 40

MMM&I Historic District
 Berkeley County, West Virginia

ID	Address	Style	Date of Construction	Contributing Status	Architectural Description
					brick chimneys have corbeled caps.
00073	801 S. Virginia Avenue	Vernacular	Circa 1910	Contributing	This 2-story, 5-bay, gable-roofed frame house is built on an L plan and has a side-gabled roof with a cross-gabled rear ell and a cross-gable on the front elevation. The roof has molded cornice with returns throughout. The hip-roofed porch is supported by turned wood posts with a shingle-clad half wall. The center door is a Craftsman style door. The windows throughout have 2/2 double-hung sash. There is a shed-roofed side porch on the south end, which is supported by turned wood posts and is decorated with lattice work. The three interior brick chimneys have corbeled caps.
00074	803 S. Virginia Avenue	Vernacular	1935	Contributing	This 2-story, 3-bay, gable-roofed frame house has a gable front roof with a molded cornice and returns. The shed-roofed porch is supported by tapered wood posts with a shingle-clad half wall. The center door is a Craftsman style door with a rectangular transom. The windows throughout have 2/2 double-hung sash with wood frames, with shutters on the front elevation. There is a 1-story, shed-roofed rear wing. The two interior brick chimneys have corbeled caps.
00075	805 S. Virginia Avenue	Vernacular	1920	Contributing	This 2-story, 3-bay, gable-roofed frame house has a side-gabled roof and a 1-story, 1-bay front porch supported by turned wood posts with a plain wood balustrade. The house is trimmed with a molded cornice with returns and corner boards. There is a 1-story, shed-roofed ell on the rear of the house. The windows throughout have 2/2 double-hung sash with wood frames. There are 2 interior end brick chimneys with corbeled caps on the north and south end of the house.
00076	807 S. Virginia Avenue	Vernacular/ Cape Cod	1940	Contributing	This 2-story, 2-bay, gable-roofed frame house has a gable front roof with a box cornice and returns. The shed-roofed awning above the door is supported by metal posts with a metal balustrade. The windows throughout have 1/1 double-hung sash. There is a 1-story, gable-roofed rear wing attached to the house. The interior brick chimney has a corbeled cap.
00077	809 S. Virginia Avenue	Vernacular	Circa 1940s	Contributing	This 2-story, 2-bay, gable-roofed frame house has a gable front roof with a box cornice and returns. The shed-roofed awning above the door is supported by metal posts with a metal balustrade. The windows throughout have 1/1 double-hung sash. There is a 1-story, gable-roofed rear wing attached to the house. The interior brick chimney has a corbeled cap.
00078	811 S. Virginia Avenue	Vernacular/ Cape Cod	Circa 1950	Contributing	This 2-story, 4-bay, gable-roofed frame house has a side-gabled roof with a box cornice and covered returns. The shed-roofed porch is supported by turned wood posts with a metal

United States Department of the Interior-National Park Service
 National Register of Historic Places Continuation Sheet
 Section Number 7 Page 41

MMM&I Historic District
 Berkeley County, West Virginia

ID	Address	Style	Date of Construction	Contributing Status	Architectural Description
					balustrade. The windows throughout have 1/1 double-hung sash with molded wood frames. There are two 1-story, shed-roofed wings attached to the house on the east end. There is an interior brick chimney.
00079	813 S. Virginia Avenue	Vernacular	1936	Contributing	This 1.5-story, 2-bay, gable-roofed frame house has a side-gabled roof with knee braces and a gable front dormer, also with knee braces. The roof extends to form the front porch, which is supported by tapered wood posts on a concrete block half wall with cement coping. The roof cornice is molded. The windows throughout have 1/1 double-hung sash. There is a 1-story, shed-roofed wing on the rear of the house. The interior brick chimney has a corbeled cap.
00080	829 S. Virginia Avenue	Vernacular	1900	Contributing	This 2-story, 3-bay, gable-roofed frame house has a gable front roof with a box cornice and returns. The front door has a pedimented molding with urn finial and fluted pilasters. There is a shed-roofed overhang on the south elevation above a projecting polygonal bay window. The south elevation has brick veneer along the lower half of the first story. The windows throughout have 2/2 double-hung sash. The interior chimney has a corbeled cap.
00081	831 S. Virginia Avenue	Vernacular/ Ranch	1953	Contributing	This 2-story, 3-bay, gable-roofed frame house has a gable front roof with a box cornice and returns. The front door has a pedimented molding with urn finial and fluted pilasters. There is a shed-roofed overhang on the south elevation above a projecting polygonal bay window. The south elevation has brick veneer along the lower half of the first story. The windows throughout have 2/2 double-hung sash. The interior chimney has a corbeled cap.
00082	901 S. Virginia Avenue	Vernacular	1840	Contributing	This 2-story, 2-bay, pyramidal-roofed frame house has a hip-roofed dormer on the front elevation. The hip-roofed porch is supported by metal posts with a metal balustrade. The windows throughout have 1/1 double-hung sash. There is a 1-story, gable-roofed rear wing attached to the house. The center brick chimney has a corbeled cap.
00083	909 S. Virginia Avenue	Vernacular	1924	Contributing	This 2-story, 3-bay, gable-roofed frame house has a side-gabled roof with a box cornice. The shed-roofed porch is supported by tapered wood posts with an aluminum-clad half wall. There is a 1-story, shed-roofed rear porch supported by wood posts. The windows throughout have 1/1 double-hung sash. There is an interior brick chimney.
00084	911 S. Virginia Avenue	Vernacular	Circa 1920	Contributing	This 1-story, 4-bay, gable-roofed brick house has a side-gabled roof with a plain cornice. The shed-roofed porch awning is supported by metal posts with a metal balustrade. There is a 1-story, gable-roofed wing on the south end of

United States Department of the Interior-National Park Service
 National Register of Historic Places Continuation Sheet
 Section Number 7 Page 42

MMM&I Historic District
 Berkeley County, West Virginia

ID#	Address	Style	Date of Construction	Contributing Status	Architectural Description
					the house. The windows throughout have 1/1 sliding sash with shutters.
00085	917 S. Virginia Avenue	Vernacular	1912	Contributing	This 2-story, 3-bay, gable-roofed brick house has a side-gabled roof with a plain cornice. The gable-roofed portico has an arched opening and is supported by metal posts with a metal balustrade. The front door is paneled and has an elliptical fanlight and 4-pane sidelights. There is a 1-story, shed-roofed, brick rear wing on the house, and a 1-story, shed-roofed wing on the north end of the house clad in wood siding. The windows throughout have 1/1 double-hung sash with brick jack arches and sills. There is an exterior brick chimney with a corbeled cap on the north end of the house.
00086	921 S. Virginia Avenue	Bungalow	1928	Contributing	This 2-story, 3-bay, gable-roofed frame house is built on an L plan and has a side-gabled roof with a gable front ell. The roof has molded cornice with returns. There is no porch structure or porch decoration. The windows have 1/1 double-hung sash with molded wood frames and shutters. There is an interior brick chimney with a corbeled cap.
00087	923 S. Virginia Avenue	Bungalow	1935	Contributing	This 2-story, 3-bay, gable-roofed frame house is oriented south and has a side-gabled roof. There is a 1-story, shed-roofed wing on the east side of the house. The shed-roofed porch has been enclosed by wood paneling and has 6/6 double-hung sash windows. The remaining windows have 1/1 double-hung sash. There is an interior corbeled brick chimney.
00125	709 S. West Virginia Avenue	American Four Square	1900	Contributing	This 1.5-story, 2-bay, gambrel-roofed house has a side-gabled roof with a molded cornice and shed-roofed returns, and a smaller-scale gambrel-roofed rear projecting bay. There are pedimented gabled dormers on the front elevation. The off-center Craftsman style door is within an incised porch on the northeast corner of the house. This porch is supported by a tapered Tuscan column on a brick base, with lattice work decoration on the north end of the porch. The 6/1 double-hung sash windows have molded frames throughout, and wood shingles on the front elevation. The center brick chimney has a corbeled cap.
00126	807 S. West Virginia Avenue	Vernacular	1935	Contributing	This 2-story, 2-bay, gable-roofed brick house has a gable-end facade with molded cornice and a Palladian window on the gable end. There is a hip-roofed dormer on the south elevation. There is a 1-story, shed-roofed rear ell on the house. The hip-roofed porch has a pedimented cross gable and is supported by brick posts on brick bases with a brick half wall and cement coping. The windows throughout have 4/1 double-hung sash with brick jack arches and sills. The interior brick chimney has

United States Department of the Interior-National Park Service
National Register of Historic Places Continuation Sheet
Section Number 7 Page 43

MMM&I Historic District
Berkeley County, West Virginia

ID	Address	Style	Date of Construction	Contributing Status	Architectural Description
					a corbeled cap.
00127	815 S. West Virginia Avenue	Vernacular	1920	Contributing	This 2-story, 4-bay, pyramidal-roofed duplex house has a molded cornice and hip-roofed dormers on the north, south, and east elevations. There are rusticated concrete block quoins of a lighter color than the rest of the exterior. The hip-roofed porch is supported by wood columns with Corinthian capitals on rusticated concrete block bases, with a rusticated concrete block half wall with cement coping. The windows throughout have 1/1 double-hung sash with cement lintels and sills. There is a 2-story, hip-roofed rear ell. The 2 brick interior chimneys have corbeled caps.
00128	819 S. West Virginia Avenue	Vernacular	1940	Contributing	This 2-story, 4-bay, gable-roofed frame house is built on an L plan and has a gable front roof with a hip-roofed ell. The roof has a molded cornice, returns, and gingerbread eaves on the front elevation. The roof overhangs the front facade and has acorn pendants, dentil molding, and brackets, and is clad in wood shingles in the gable end. The second story of the front elevation has a paneled projecting polygonal bay. There is a 1-story, shed-roofed rear ell. The hip-roofed wrap-around porch has by Tuscan columns with a half wall. There are 1/1 double-hung sash windows throughout and a rectangular door transom.
00129	821 S. West Virginia Avenue	American Four Square	1930	Contributing	This 2-story, 4-bay, gable-roofed frame duplex house has a gable-end facade with covered cornice returns. There is a 2-story, gable-roofed rear ell. The hip-roofed porch is supported by tapered wood posts with a wood half wall. The 1/1 double-hung sash windows are often paired. There are picture windows on the first story of the front elevation. There is a center brick chimney.
00130	825 S. West Virginia Avenue	Vernacular/ Cape Cod	1945	Contributing	This 2-story, 2-bay, gable-roofed frame house has a gable-end facade with a molded cornice and returns. The hip-roofed porch is supported by Tuscan columns with a wood balustrade. There is a 1-story, shed-roofed rear ell. The windows throughout have 1/1 double-hung sash, with shutters on the front elevation. The center brick chimney has a corbeled cap.
00131	827 S. West Virginia Avenue	Vernacular/ American Four Square	1920	Contributing	This 2-story, 2-bay, gable-roofed frame house has a gable-end facade with returns. The hip-roofed porch is supported by turned wood posts with a wood balustrade. The off-center Craftsman style door has a rectangular transom. The 1/1 double-hung sash windows have shutters on the front elevation. There is a 1-story, shed-roofed rear ell. The center brick chimney has a corbeled cap.
00132	831 S. West Virginia Avenue	Vernacular/ Cape Cod	1940	Contributing	This 2-story, 2-bay, gable-roofed frame house has a gable-end facade with a molded cornice

United States Department of the Interior-National Park Service
 National Register of Historic Places Continuation Sheet
 Section Number 7 Page 44

MMM&I Historic District
 Berkeley County, West Virginia

ID	Address	Style	Date of Construction	Contributing Status	Architectural Description
					and returns. The hip-roofed porch is supported by turned wood posts with a wood balustrade. The windows throughout have 1/1 double-hung sash with wood frames. The 2-story, cross-gabled ell has a gable-roofed hood over the side entryway. The interior brick chimney has a corbeled cap.
00133	901 S. West Virginia Avenue	Vernacular/ Craftsman	1940	Contributing	This 2-story, 3-bay, gable-roofed frame house is built on an L plan and has a side-gabled roof. The hip-roofed porch is supported by metal posts with a metal balustrade. There is a 1-story, shed-roofed rear wing attached to the ell. The windows throughout have 1/1 double-hung sash, with shutters on the front elevation. There is an interior end brick chimney on the north end of the house.
00134	911 S. West Virginia Avenue	Bungalow	1920	Contributing	This 2-story, 3-bay, gable-roofed frame house has a gable-end facade with cornice returns. The shed-roofed porch is supported by wood posts with a wood balustrade. There is a 1-story, shed-roofed, enclosed side porch. The windows have 2/1, 2/2, and 3/1 double-hung sash. There is a long, 1-story, low shed-roofed rear ell on the house.
00135	913 S. West Virginia Avenue	Craftsman	1923	Contributing	This 2-story, 3-bay, gable-roofed frame house is built on an L plan and has a side-gabled roof with cornice returns. There is a cross gable on the front elevation, also with cornice returns. There is a projecting center bay on the first story of the front elevation. The hip-roofed porch is supported by fluted metal columns. The windows throughout have 1/1 double-hung sash. The rear ell has an enclosed shed-roofed porch. The interior end chimney has been covered with cement.
00136	915 S. West Virginia Avenue	Vernacular	1939	Contributing	This 2-story, 3-bay, hip-roofed frame house is V-shaped, and has a 2-story hip-roofed porch, which is enclosed on the second story and is supported by metal posts with a metal balustrade. The entry is recessed and appears to have at one time been a storefront. The windows have 1/1 double-hung sash with shutters, with the exception of the picture windows on the front elevation. There is an aluminum awning over the side entry on the east side of the building. There is a center brick chimney.
00137	917 S. West Virginia Avenue	Vernacular	1916	Contributing	This 2-story, 3-bay, hip-roofed frame house is V-shaped, and has a 2-story hip-roofed porch, which is enclosed on the second story and is supported by metal posts with a metal balustrade. The entry is recessed and appears to have at one time been a storefront. The windows have 1/1 double-hung sash with shutters, with the exception of the picture windows on the front elevation. There is an

United States Department of the Interior-National Park Service
 National Register of Historic Places Continuation Sheet
 Section Number 7 Page 45

MMM&I Historic District
 Berkeley County, West Virginia

ID	Address	Style	Date of Construction	Contributing Status	Architectural Description
					aluminum awning over the side entry on the east side of the building. There is a center brick chimney.
00138	921 S. West Virginia Avenue	Vernacular	1930	Contributing	This 2-story, 2-bay, gable-roofed house has a gable-end facade with molded cornice and returns. The second story is clad in wood shingles, and flares at the bottom, where it is joined to the brick first story by a wood belt course. The hip-roofed porch is supported by Tuscan columns. There is a projecting polygonal bay window on the first story of the front elevation. The door surround is fluted with corner blocks. The windows throughout have 6/6 double-hung sash with wood frames on the second story and cement lintels and sills on the first story. There is a hip-roofed enclosed rear porch and a corbeled brick chimney.
00139	925 S. West Virginia Avenue	Vernacular	1909	Contributing	This 2-story, 2-bay, gable-roofed house has a gable-end facade with molded cornice and returns. The second story is clad in wood shingles, and flares at the bottom, where it is joined to the brick first story by a wood belt course. The hip-roofed porch is supported by Tuscan columns. There is a projecting polygonal bay window on the first story of the front elevation. The door surround is fluted with corner blocks. The windows throughout have 6/6 double-hung sash with wood frames on the second story and cement lintels and sills on the first story. There is a hip-roofed enclosed rear porch and a corbeled brick chimney.
00140	927 S. West Virginia Avenue	Cape Cod	Circa 1950s	Contributing	This 2-story, 2-bay, gable-roofed house has a gable-end facade with molded cornice and returns. The second story is clad in wood shingles, and flares at the bottom, where it is joined to the brick first story by a wood belt course. The hip-roofed porch is supported by Tuscan columns. There is a projecting polygonal bay window on the first story of the front elevation. The door surround is fluted with corner blocks. The windows throughout have 6/6 double-hung sash with wood frames on the second story and cement lintels and sills on the first story. There is a hip-roofed enclosed rear porch and a corbeled brick chimney.
00141	931 S. West Virginia Avenue	Vernacular	1907	Contributing	This 2-story, 2-bay, hip-roofed house has a cross gable on the rear and a centered cross gable on the front elevation. The hip-roofed porch is supported by Tuscan columns with a metal balustrade. The 1/1 double-hung sash windows have cement lintels and sills, and shutters throughout. The interior brick chimney has a corbeled cap.

United States Department of the Interior-National Park Service
National Register of Historic Places Continuation Sheet
Section Number 7 Page 46

MMM&I Historic District
Berkeley County, West Virginia

ID	Address	Style	Date of Construction	Contributing Status	Architectural Description
00142	933 S. West Virginia Avenue	Vernacular	1919	Contributing	This 2-story, 3-bay, gable-roofed frame house is built on an L plan and has a side-gabled roof with a cross gable on the front elevation. The roof has a molded cornice with returns. The hip-roofed porch is supported by Tuscan columns. The windows throughout have 1/1 double-hung sash, with shutters on the front elevation. There are 2 interior end brick chimneys with corbeled caps.

Statement of Significance

The MMM&I Historic District is significant under Criterion A on the local level in the area of community planning and development, with the period of significance being 1891. The "MMM&I Addition to the City of Martinsburg" was platted and subdivided by the Martinsburg Mining Manufacturing & Improvement (MMM&I) Company in 1891. The company was founded to lure industrial enterprises to Martinsburg and to develop adjacent residential subdivisions for their workers, in this case an area located east of the newly constructed Kilbourn Knitting Mill. The Kilbourn Mill, along with several large industries brought to Martinsburg by the MMM&I during the 1890s, created enormous demand for housing in the west end of Martinsburg. Steady population growth in the MMM&I district resulted in the area being nearly fully developed by 1931.

The MMM&I Historic District is significant under Criterion C for architecture on the local level, with the period of significance being 1891-1952. The district contains intact vernacular examples of architectural styles popular during the 1891-1935 period, including the vernacular Queen Anne, American Four Square, and Bungalow styles. Several builders and contractors such as Bernard Tharpe, Charles Westenhaver, William Leonard and John Hutzler were residents of the MMM&I district in the 1910s and 1920s and may have built houses in the neighborhood. The district also contains isolated examples of architectural styles popular in the 1935-1952 period, such as the Gothic revival, Tudor revival, Dutch Colonial, Colonial revival, and English Cottage styles.

Criterion A

Berkeley County was established in 1772, with its new county seat on the property of Major General Adam Stephen, who laid out 269 lots on 130 acres along Tuscarora Creek. The town was named Martinsburg after Thomas Bryan Martin, a nephew of the proprietary owner, Lord Fairfax (BCHLC 1995:1).

Martinsburg grew quickly during the early nineteenth century as a center for milling and manufacturing. Transportation played a pivotal role in the economic development of Martinsburg in the antebellum years. In 1831, the Winchester & Potomac Railroad was chartered and soon provided a valuable north-south conduit for the Shenandoah Valley's agricultural products (Wood 2001:1). In 1839, the Baltimore & Ohio (B&O) Railroad began construction of an extension of its main line west of Harper's Ferry, Virginia. The rapid influx of railroad workers created a pressing demand for additional housing outside the town's original limits.

The B&O reached Martinsburg in 1842, providing an efficient means for transporting the town's flour and grain products. Martinsburg's population continued to grow as a result of new manufacturing jobs and by 1860 its population was larger than the combined populations of the nearby towns of Charlestown, Harper's Ferry, and Shepherdstown (Doherty 1972: 134).

Martinsburg's strategic position along the B&O main line made it an important prize during the Civil War and the town was attacked and occupied by both sides several times. The B&O roundhouse and shops were destroyed in 1861, but were rebuilt after the war, stimulating further growth of Martinsburg's industries (Wood 1980:8-2). Several municipal improvements in the 1870s, such as the construction of a water works and the formation of a gas company, provided the basis for an upsurge in development (Wood 2001: 1).

By 1890, Martinsburg was flourishing. An Improvement Loan and Building Association was organized on 27 March 1890 with 61 shares of stock. The Association's first success was securing a contract with B. J. Hickman of Philadelphia for a knitting factory in southwest Martinsburg. A contract with Mr. Hickman was closed on 12 April 1890. The association acquired the site and erected the plant at a cost of \$12,000 and loaned Hickman \$14,500 to assist in equipping and operating the plant.

After Hickman died in 1891, a new contract was made with the Middlesex Knitting Co. Also in June 1891, the Loan Association made a large loan to the Kilbourn Knitting Co. of New Brunswick, New Jersey. The Martinsburg Mining, Manufacturing & Improvement Co. (MMM&I) of which Geo. M. Bowers was President, donated land in southwest Martinsburg for the location of the Kilbourn Mills. In 1892, W. H. Crawford of New York opened a woolen factory in Martinsburg. He also received assistance from the Association. Mr. John Fitz's foundry in Martinsburg also received a loan. The Brooklyn Brass Manufacturing Co., the Auburn Wagon Co., the Martinsburg Canning Factory and Cole Storage Co. all established plants in Martinsburg within the next six years.

These plants meant work for people and income for them to establish homes. A 1904 map of Martinsburg shows the Brooklyn Brass Works and the Kilbourn Knitting Machine Co. and the Shenandoah Pants Co. all on land that had been laid out by the MMM&I Co.

In 1891, the MMM&I Company purchased an estimated 525 acres from Charles James Faulkner's estate "Boydville" (Berkeley County Deed Book 88, page 60). Here they laid out their development, recorded in county deed books as the "MMM&I Addition to Martinsburg." The MMM&I held a sale of lots on 30 October 1891 and sold \$100,000 in property during their three-day sale. *The World, 1st Anniversary Edition* (August 31, 1892) stated that their lots were situated in the southwestern section of the City. "The grounds have fine streets, and pure water is furnished by the City water works." The newspaper also noted that "large factories had already been established and that dwelling houses have been built."

On 8 February 1892, D. W. Shaffer, one of the founding stockholders in the MMM&I Co., purchased eight (8) lots designated on plat 1 of the MMM&I Addition to Martinsburg. The lots were 15, 16, 17 Block 20, Plat 1 Nos. 21 22, 43, Block 20, Plat 1, lots 19 and 20, Block 57, Plat No. 1 (Berkeley Co. Deed Book 89, page 350). The purchase price was \$1.00 plus 32 shares of MMM&I stock

The first sale to an individual property owner was made shortly thereafter. On 12 May 1892 D. W. Shaffer sold for \$150.00 to Ella B. Martin lot no. 20, Block 57, Plat no. 1: "Said lot contained 40 feet fronting on Virginia Avenue and running 150 feet west to Addition Street to a 10 foot alley in the rear."

Although many of the new area's residents were employed at the Kilbourn Mill, there is no evidence that the company actually built housing for its workers. A wide variety of house types and styles were constructed in the district during the 1890s and early 1900s. Numerous duplex and multi-family buildings also were built to house the many new residents of the area.

US Population Census Schedules for Martinsburg in 1920 indicate that most MMM&I residents worked at the nearby knitting and hosiery mills, such as the Kilbourn Mill and the Shenandoah Pants Company plant. (US Census Bureau 1920). Along the 500 block of Virginia Avenue, for example, whole families like the White, Snyder, Gross, and Jones families were employed at the Kilbourn Mill. A majority of residents along West Virginia and Maryland Avenues also worked at the mill, according to the 1920 Census. A few residents also worked for the CV railroad at their freight yards in Martinsburg, as well as at nearby quarries.

The 1900s and 1910s were the decades of MMM&I's most intense development. Sanborn maps of Martinsburg from 1931 show that most of the MMM&I district was fully developed by that date, with detached, duplex, and multi-unit housing (Sanborn Map Company 1931). According to city directories from the 1930s and 1940s, turnover was frequent; most families resided at a particular address for no more than three or four years (RL Polk Company 1931, 1932, 1934 and 1939). The MMM&I district continued in popularity during the 1940s and 1950s, with the few remaining residential building lots bought and developed with small, one-story brick Ranch-style and frame Cape Cod style houses during this period.

Criterion C

The historic buildings in the MMM&I Historic District encompass a narrow range of vernacular architectural styles nationally popular during the first five decades of the twentieth century. Most prevalent in the district (168 resources) are frame vernacular houses, usually with weatherboard or German siding. Most of these are 2- or 2 ½-stories tall, with either a side gable or gable-end roof and a 1-story front porch. Decorative details on the exterior were few, mostly confined to porch columns and attic trim. Frame vernacular houses primarily date from the first two decades (1910-1930) of the MMM&I district's development. Numerous vernacular two-story frame houses with cross gable roofs and hipped porches stand along the 700 block of Virginia Avenue and New York Avenues and along Buxton Street. There is a minimum of architectural decoration on these houses.

Eight examples of vernacular Queen Anne-style houses are found throughout the district. These houses date from the earliest period of development and were not built after 1920. This style is characterized by one- and two-story polygonal bays, a gable roof, Palladian windows, narrow window sash, and wrap-around porches.

Forty-seven examples of the American Four Square style built in frame, brick, and concrete block are found throughout the MMM&I Historic District. The style, popular in the 1910s, 1920s, and early 1930s, is characterized by a hipped roof with hipped dormer window, a two bay-wide-elevation, and a hip-roofed front porch. The style was used for both single-family and duplex houses in the district. A frame example of this style is found at 711 Virginia Avenue. A brick example of this style is found at 824 West Virginia Avenue. A few unusual concrete block American Four Square-style houses are also found in this district. They feature porches with concrete block columns with Ionic capitals and corner quoins. A good example is found at 743-745 Faulkner Avenue. Another unusual variant features a two-story polygonal bay, as found at 824 West Virginia Avenue.

Fourteen Bungalow-style houses are also found within the district. Features of this style, popular in the 1920s and 1930s, include a low-pitched roof overhanging on the front to form a porch, a hipped or gable-roof dormer, bracketed eaves, and an exterior chimney. The house at 921 Virginia Avenue possesses most of the essential features of this style. The house at 901 West Virginia Avenue is a variant with a gable-front roof.

Although the district is overwhelmingly residential, there are a few other building types found. The St. Luke's United Methodist Church (originally a Lutheran church) on New York Avenue is a Gothic Revival-style brick structure. A former one-story brick firehouse, stands at the corner of Baker Street and Virginia Avenues. It is a rare example of the Colonial Revival Style in the district. Some buildings possibly once used for commercial purposes stand at 607 Buxton Street and 602 West Virginia Avenue.

Several groups of duplex housing are found along throughout the MMM&I Historic District. They date from between 1915 and 1925 and were constructed for workers at the nearby Kilbourn Knitting Mill. They are two stories tall, usually with a gable-front roof, hip-roofed front porch, or shed-roofed rear porch. Although vernacular, they often possess some Colonial Revival-style architectural features.

No architects are known to have designed buildings in the MMM&I Historic District. City directories from the 1913-1928 period list several builders and contractors who were residents of the neighborhood. These individuals presumably built their own houses, and may have built other houses in the MMM&I Historic District. Builder Charles Westenhaver resided at 413 Virginia Avenue in 1913 and moved to 801 New York Avenue in 1915. Other builders/contractors include builder Bernard Tharpe, who lived at 666 Faulkner Avenue, Sam Gillan, who lived at 511 Virginia Avenue, and John Hutzler, who lived at 614 West Virginia Avenue.

REFERENCES

- Berkeley County Land Records. On file at Berkeley County Courthouse,
Martinsburg, West Virginia.
- Berkeley County Tax Records. On file at Berkeley County Courthouse,
Martinsburg, West Virginia.
- Berkeley County Will Books. On file at Berkeley County Courthouse,
Martinsburg, West Virginia.
- Berkeley County Historic Landmarks Commission (BCHLC)
1995 *Driving Guide-Historic Districts and Properties of Berkeley County*
Martinsburg, West Virginia).
- Doherty, William Thomas
1972 *Berkeley County, U.S.A.* McLain Printing Company. Parsons, West Virginia.
- West Virginia Division of Culture and History-Historic Preservation Unit
1991 *Guidelines for Phase I Surveys, Phase II Testing, Phase III Mitigation, and
Cultural Resource Reports.* Charleston, West Virginia.
1995 *Historic Structures Surveys.* Charleston, West Virginia.
- Wood, Don C.
1980 *Downtown Martinsburg Historic District-National Register Nomination.*
Martinsburg, WV.
1980 *Historic Resources of Berkeley County-Multiple Resource Nomination.*
Martinsburg, WV.
1980 *Industries of Berkeley County-National Register Nomination.* Martinsburg, WV
1980 *The B&O Railroad and Related Industries Historic District-Multiple
Resource Nomination.* Martinsburg, WV.
2001 "District #1."

UTM REFERENCES

A-	Zone 18	244036E	4371042N
B-	Zone 18	244319E	4370964N
C-	Zone 18	244307E	4370926N
D-	Zone 18	244356E	4370913N
E-	Zone 18	244210E	4370416N
F-	Zone 18	243949E	4370490N
G-	Zone 18	243970E	4370562N
H-	Zone 18	243917E	4370575N
I-	Zone 18	243934E	4370640N
J-	Zone 18	243829E	4370670N
K-	Zone 18	243786E	4370537N
L-	Zone 18	243627E	4370585N
M-	Zone 18	243674E	4370721N

VERBAL BOUNDARY DESCRIPTION

The Martinsburg Mining, Manufacturing and Improvement (MMM&I) Historic District is shown as the solid black line on the accompanying map. The district is bounded on the *north* by the south side of Addition Street; on the *east* by the west side of South Raleigh Street; on the *south* by a line running west from the intersection of Bowers Street and South Raleigh Street to the rear lots lines of properties on the west side of West Virginia Avenue, then north along an alley to the rear lot lines of properties on the south side of Berry Street, then west along the rear lot lines of properties on the south side of Berry Street to the west side of New York Avenue, then north to the north side of Berry Street, then west to the east side of Maryland Avenue, then south to the north side of Buxton Street and then west to rear lot lines on the west side of Florida and Faulkner Avenues. The rear lot lines of the Florida and Faulkner Avenues define the *west* boundary of the district. In addition, the MMM&I Historic District adjoins and is bounded on the north and west by the Boom Town National Register Historic District.

BOUNDARY JUSTIFICATION

The boundaries of the MMM&I Historic District include a portion of the land platted and subdivided in 1891 by the Martinsburg Mining Manufacturing & Improvement Company and include the greatest concentration of 1891-1952 contributing resources. The north, northwest, and west boundaries adjoin the Boomtown Historic District. The south and west boundaries were drawn to exclude non-contributing, post-1952 residences and several large vacant lots.

**Martinsburg Mining, Manufacturing & Improvement (MMM&I) Historic District
Martinsburg, Berkeley County, West Virginia**

March 2002

Geoffrey B. Henry, Photographer

**Negatives held at West Virginia Division of Culture and History/State Historic
Preservation Office, Charleston, West Virginia**

- Photo 1/12 743-745 Faulkner Avenue. Camera facing west.
- Photo 2/12 735 Faulkner Avenue. Camera facing northeast.
- Photo 3/12 827-829-833 Maryland Avenue. Camera facing southwest.
- Photo 4/12 612 Maryland Avenue. Camera facing northeast.
- Photo 5/12 615 Maryland Avenue. Camera facing northwest.
- Photo 6/12 St. Luke's Methodist Church, New York Ave. Camera facing northeast.
- Photo 7/12 728 New York Avenue. Camera facing northeast.
- Photo 8/12 715 New York Avenue. Camera facing west.
- Photo 9/12 901 West Virginia Avenue. Camera facing west.
- Photo 10/12 View north from northwest corner of Virginia and Berry Streets. Camera facing north.
- Photo 11/12 Hose Company No. 3-Volunteer Fire Station. Camera facing southeast.
- Photo 12/12 901 Virginia Avenue. Camera facing northwest.

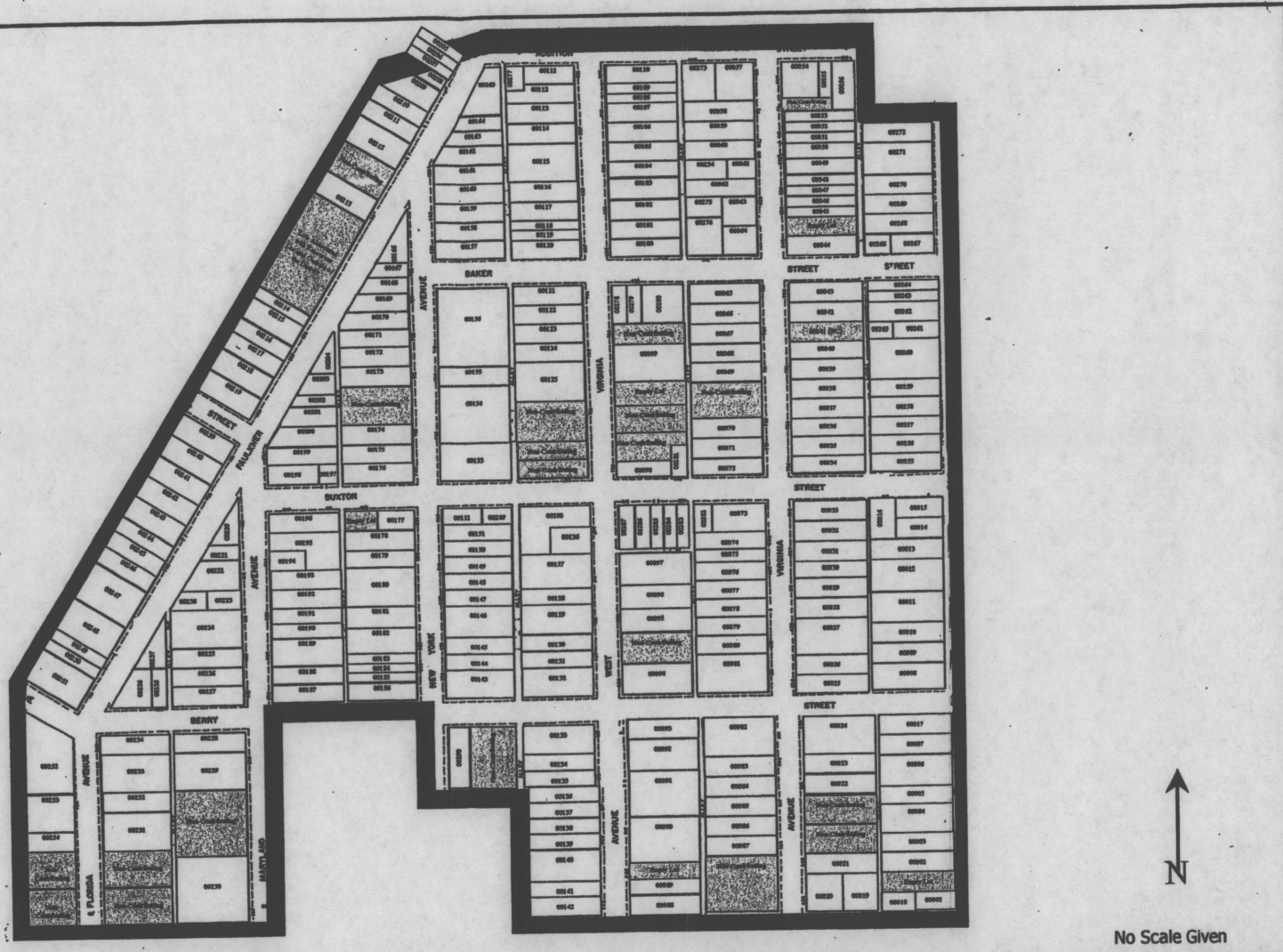


Figure
Historic Resources Distribution In the MMM&I Historic District,
Martinsburg, Berkeley County, West Virginia







M&I
HISTORIC DISTRICT #72
WARTINSBURG,
BERKELEY COUNTY #27'30"
WEST VIRGINIA

UTM ZONE 18

- 1: 244036E
4371042N
- 2: 244319E
4370964N
- 3: 244307E
4370926N
- 4: 244356E
4370913N
- 5: 244210E
4370416N
- 6: 243949E
4370490N
- 7: 243970E
4370562N
- 8: 243917E
4370578N
- 9: 243934E
4370640N
- 10: 243829E
4370670N
- 11: 243786E
4370537N
- 12: 243627E
4370585N
- 13: 243674E
4370721N

