

United States Department of the Interior  
National Park Service

# National Register of Historic Places Registration Form

### 1. Name of Property

historic name Marlowe Consolidated School

other names/site number Marlowe Elementary School

### 2. Location

street & number 9580 Williamsport Pike not for publication N/A

city or town Marlowe vicinity

state West Virginia code WV county Berkeley code 003 zip code 25419

### 3. State/Federal Agency Certification

As the designated authority under the National Historic Preservation Act of 1986, as amended, I hereby certify that this  nomination  request for determination of eligibility meets the documentation standards for registering properties in the National Register of Historic Places and meets the procedural and professional requirements set forth in 36 CFR Part 60. In my opinion, the property  meets  does not meet the National Register Criteria. I recommend that this property be considered significant  nationally  statewide  locally. (  See continuation sheet for additional comments.)

\_\_\_\_\_  
Signature of certifying official/Title

\_\_\_\_\_  
Date

\_\_\_\_\_  
State or Federal agency and bureau

In my opinion, the property  meets  does not meet the National Register criteria. (  See continuation sheet for additional comments.)

\_\_\_\_\_  
Signature of commenting official/Title

\_\_\_\_\_  
Date

\_\_\_\_\_  
State or Federal agency and bureau

### 4. National Park Service Certification

I hereby certify that this property is:

entered in the National Register  
 See continuation sheet.

determined eligible for the National Register  
 See continuation sheet.

determined not eligible for the National Register

removed from the National Register

\_\_\_\_\_  
Signature of the Keeper

\_\_\_\_\_  
Date of Action

\_\_\_\_\_ other (explain): \_\_\_\_\_

Marlowe Consolidated School  
Name of Property

Berkeley County, WV  
County and State

**5. Classification**

<b>Ownership of Property</b> (Check as many boxes as apply)	<b>Category of Property</b> (Check only one box)	<b>Number of Resources within Property</b> (Do not include previously-listed resources in the count)	
		Contributing	Noncontributing
<input type="checkbox"/> private	<input checked="" type="checkbox"/> building(s)		
<input checked="" type="checkbox"/> public-local	<input type="checkbox"/> district	1	
<input type="checkbox"/> public-State	<input type="checkbox"/> site		
<input type="checkbox"/> public-Federal	<input type="checkbox"/> structure		
	<input type="checkbox"/> object		
		1	
			Total

**Name of related multiple property listing**  
(enter "N/A" if property is not part of a multiple property listing)  
N/A

**Number of contributing resources previously listed in the National Register**  
none

**6. Function or Use**

**Historic Functions**  
(Enter categories from instructions)  
EDUCATION/ school

**Current Functions**  
(Enter categories from instructions)  
EDUCATION/ school

**7. Description**

**Architectural Classification**  
(Enter categories from instructions)  
LATE 19<sup>TH</sup> AND 20<sup>TH</sup> CENTURY REVIVALS/Collegiate Gothic

**Materials**  
(Enter categories from instructions)  
foundation STONE/limestone  
walls BRICK

roof ASPHALT  
other STONE; WOOD

**Narrative Description**

(Describe the historic and current condition of the property on one or more continuation sheets)

Refer to Continuation Sheets

Marlowe Consolidated School  
Name of Property

Berkeley County, WV  
County and State

**8. Statement of Significance**

**Applicable National Register Criteria**

(Mark "x" in one or more boxes for the criteria qualifying the property for National Register listing)

**Areas of Significance**

(Enter categories from instructions)

**A** Property is associated with events that have made significant contribution to the broad patterns of history. EDUCATION a  
our

**B** Property is associated with the lives of persons significant in our past. **Period of Significance**  
1922-1956

**C** Property embodies the distinctive characteristics of a type, period, or method of construction or represents the work of a master, or possesses high artistic values, or represents a significant and **Significant Dates**  
1922

distinguishable entity whose components lack individual distinction.

**D** Property has yielded, or is likely to yield, information important in prehistory or history. **Significant Person**  
(Complete if Criterion B is marked above)  
N/A

**Criteria Considerations**

Mark "X" in all the boxes that apply.)

Property is:

**Cultural Affiliation**

N/A

**A** owned by a religious institution or used for religious purposes.

**B** removed from its original location. **Architect/Builder**  
Drake, George, builder

**C** a birthplace or a grave.

**D** a cemetery.

**E** a reconstructed building, object, or structure.

**F** a commemorative property.

**G** less than 50 years of age or achieved significance within the past 50 years

**Narrative Statement of Significance**

(Explain the significance of the property on one or more continuation sheets.)

---

**9. Major Bibliographical References**

---

**Bibliography**

(Cite the books, articles, and other sources used in preparing this form on one or more continuation sheets.)

**Previous documentation on file (NPS):**

\_\_\_ preliminary determination of individual listing (36 CFR 67) has been requested.  
\_\_\_ previously listed in the National Register  
\_\_\_ previously determined eligible by the National Register  
\_\_\_ designated a National Historic Landmark  
\_\_\_ recorded by Historic American Buildings Survey  
# \_\_\_\_\_  
\_\_\_ recorded by Historic American Engineering  
Record # \_\_\_\_\_

**Primary location of additional data:**

X  State Historic Preservation Office  
\_\_\_\_\_ Other state agency  
\_\_\_\_\_ Federal agency  
 X  Local government  
\_\_\_\_\_ University  
\_\_\_\_\_ Other  
Name of repository:  
Berkeley County Historic Landmarks Commission

Marlowe Consolidated School

Name of Property

Berkeley County, WV

County and State

---

---

**10. Geographical Data**

---

**Acreage of Property**  5 acres

**U. S. G. S. Quad map:**  Williamsport, MD-WV

**UTM References**

(Place additional UTM references on a continuation sheet)

	Zone	Easting	Northing	Zone	Easting	Northing
1	18	254222	4385827	3	254547	4385705
2	18	254441	4385985	4	254390	4385639

N/A  See continuation sheet.

**Verbal Boundary Description**

(See Continuation Sheet)

**Boundary Justification**

(See Continuation Sheet.)

---

**11. Form Prepared By**

---

name/title  David L. Taylor, Principal

organization  Taylor & Taylor Associates, Inc.

date  August, 2005

street & number  9 Walnut Street

telephone  814-849-4900

city or town  Brookville

state  PA

zip code  15825

---

**Additional Documentation**

---

Submit the following items with the completed form:

**Continuation Sheets****Maps**

A **USGS map** (7.5 or 15 minute series) indicating the property's location.

A **sketch map** for historic districts and properties having large acreage or numerous resources.

**Photographs**

Representative **black and white** photographs of the property.

**Additional items**

(Check with the SHPO or FPO for any additional items)

---

**Property Owner**

---

(Complete this item at the request of the SHPO or FPO.)

name Board of Education of the County of Berkeley

street & number 401 S. Queen Street telephone 404-267-3500

city or town Martinsburg state WV zip code 25401

**United States Department of the Interior  
National Park Service**

**National Register of Historic Places  
Continuation Sheet**

**Marlowe Consolidated School  
Berkeley County, WV**

Section Number 7 Page 2

---

**7. Description**

Marlowe School (Photos 1-16) is a contributing 2-story 1922 red brick school house, rectilinear in form and set on a foundation of poured concrete. Modern red brick additions have been made to the rear elevation; they are of one story in height, of a considerably lower scale than the original building, and are not visible from the highway when viewing the building from a straight-on vantage point. The building is located on a 5-acre tract along the south side of the Williamsport Pike (U. S. Route 11) in the unincorporated village of Marlowe. The village lies in the Falling Waters District of northeastern Berkeley County, in the rural Eastern Panhandle of West Virginia, c. 13 miles northeast of the county seat of Martinsburg and fewer than 3 miles southwest of the Potomac River and Williamsport, Maryland.

As originally constructed, Marlowe Consolidated School contained eight classrooms, four on each floor. Each room connected to a long coat room which served only that room. Mechanical and storage areas along with the school cafeteria were located in the basement and the Principal's office was at the south end of the second-floor corridor. The exterior finish of the building is of red brick trimmed in smooth-dressed limestone. The facade is symmetrically massed with a forward-projecting entry bay suggestive of a tower which would have been associated with the Collegiate Gothic style, a popular design mode for educational buildings of this era. On the first story, the main entrance is centered in this projecting bay with paired windows on the second story. The entrance bay is flanked by outer bays penetrated by flat-topped window openings each containing five double-hung windows. A limestone beltcourse extends across the facade above the second-story windows and a crenellated parapet caps the building, another design feature which suggests the Collegiate Gothic style.

The side elevations of the school are sparsely detailed with a small window-to-wall ratio. The aforementioned beltcourse continues above the height of the second story as does the modest crenellated parapet. Two large stylized rectangular brick panels on each side elevation are articulated with small square corner blocks. Originally four windows at the end of the interior coat rooms penetrated each of the side elevations; some of these are intact, while others have been infilled with brick and two have been converted to provide access to exterior fire escapes. The rear elevation is penetrated by large banks of windows on the first and second story and smaller windows opening into the stairway accessing the second story.

The interior is arranged around a broad central hallway on each floor with original beaded

**United States Department of the Interior  
National Park Service**

**National Register of Historic Places  
Continuation Sheet**

**Marlowe Consolidated School  
Berkeley County, WV**

Section Number 7 Page 3

---

wainscot rising approximately four feet from the floor level. Steps rises from the main entrance on the west side to the first-story hallway. Near the east end of the first-story hallway is the original open stair leading to the second story. This stair retains the original square newel, handrail, and plain wood balusters and is further articulated by beaded wainscot. Classrooms open from each side of the hallways on both floors; the northwest classroom on the first floor has been converted for administrative use and partitions have been constructed to create small office cubicles. The other classrooms retain much of their historic character including chalkboards and wainscoting. Walls are finished in plaster and the original wood floor remains, finished naturally in most areas and carpeted in others. Some ceilings have been dropped but the original plaster finishes remain intact above. A fire separation door has been constructed inside the main door on the first story and a partial firewall has been constructed around a portion of the stair on the second floor.

Marlowe Consolidated School is located on a flat tract in the heart of the village of Marlowe. Paved parking is in front of the building and a playground is located south of the school. At the time of preparation of this nomination, three detached portable classroom units stood immediately east of the school; these are not permanent buildings and are uncounted features with respect to the nomination. No dependencies are associated with the school building.

**United States Department of the Interior**  
**National Park Service**

**National Register of Historic Places**  
**Continuation Sheet**

**Marlowe Consolidated School**  
**Berkeley County, WV**

Section Number 8 Page 4

---

**8. Significance**

Marlowe Consolidated School meets National Register Criteria A in the area of *education*, as an early Berkeley County example of a consolidated school building dating from the first quarter of the twentieth century. The school's period of significance begins in 1922 with its construction, and runs to 1956, a period that witnessed the school's continued use as an educational facility. Despite additions to the rear of the original building, the property retains integrity.

Public education in West Virginia dates to 1810 when the Literacy Fund was created by the Virginia Legislature. Wealthy children continued to be tutored or were sent to private schools, several of which were located in Berkeley County. By 1818 a plan was established to educate the less fortunate and, six school commissioners were appointed by the Berkeley County Court. At that time, thirty-three schoolhouses were in the county, nineteen of which were in use; by 1821 six school districts, each with its own Board of Education, had been created in Berkeley County.<sup>1</sup> The 1818 Act remained in force until the Legislature authorized free schools in 1846.<sup>2</sup>

Schoolhouses, typically of the "one-room" variety, dotted Berkeley County. They were constructed of brick, wood, and stone and varied widely in size and detail. Typically they were gable-roofed and gable-end oriented, with a door and sometimes windows on the facade. Each side elevation was penetrated by a series of windows allowing an abundance of natural light into the classroom. In pre-integration Berkeley County, the schools were segregated. The one-room schools operated well into the twentieth century; the last to close in Berkeley County was the Fairview Opequon School. The 1911 U. S. Geological Survey 15-minute quadrangle map for the area near Marlowe School indicates the presence of several schools in close proximity to the community. These include Cedar Grove School, Maidstone School, Lanes School and Falling Waters School (Fig. 1).

The first school consolidation was authorized in West Virginia in 1908 and involved the abandon-

---

<sup>1</sup>Don. C. Wood, **Documented History of Martinsburg and Berkeley County** (Martinsburg: Berkeley County Historical Society, 2004), p. 231-233.

<sup>2</sup>Charles Henry Ambler, **A History of Education in West Virginia from Early Colonial Times to 1949**. (Huntingdon, West Virginia: Standard Printing and Publishing Co., 1951).



**United States Department of the Interior  
National Park Service**

**National Register of Historic Places  
Continuation Sheet**

**Marlowe Consolidated School  
Berkeley County, WV**

Section Number 8 Page 5

---

ment of six small schools in Marshall County and their consolidation into a three-room building.<sup>3</sup> By 1916 nearly three hundred rural schools had been abandoned, and while consolidation originally required the written request of seventy-five percent of the voters in the affected districts, state legislation passed in 1915 permitted school boards to undertake consolidation on their own initiative. Under the leadership of school board president John D. Landis, the citizens of the Marlowe area banded together to build their new school, which was begun in 1921. Funds were sufficient to erect the outside walls but not the roof, and completion was postponed until the spring of 1922, after the tax revenues had been received by the school district.

Marlowe Consolidated School represents the work of local tradesman. George Drake was responsible for the masonry and Clyde McMillan undertook the carpentry. Thomas VanMetre, who would one day become the school principal, completed the landscaping. Marlowe housewives prepared meals for the workers, enabling them to work well into the night so that the school could be completed in time for the fall term. The school opened in September, 1922 under the principalship of Arnold Mish. Initially it served grades one through eight, one grade to each of the eight rooms. For a time, ninth and tenth grade classes were also held at the school, which was then known as Marlowe Junior High. Marlowe Consolidated School has been in continuous operation since it first opened and presently houses kindergarten and first and second grades.

Summarizing, Marlowe Consolidated School meets National Register Criterion A for its reflection of the patterns of *education*, specifically as an important local example of the school consolidation movement in West Virginia during the first quarter of the twentieth century. Although somewhat altered from the original, it nonetheless retains sufficient integrity to reflect its appearance throughout the period of significance. The additions to the rear of the building are accessed through a small connector and the additions themselves, low in scale, are built of red brick to complement the original 1922 school building.

---

<sup>3</sup>**Ibid.** p. 436.

**United States Department of the Interior  
National Park Service**

**National Register of Historic Places  
Continuation Sheet**

**Marlowe Consolidated School  
Berkeley County, WV**

Section Number 9 Page 6

---

**9. Major Bibliographical References**

**BIBLIOGRAPHY**

- Ambler, Charles Henry, **A History of Education in West Virginia from Early Colonial Times to 1949**. Huntington, West Virginia: Standard Printing and Publishing Co., 1951.
- Berkeley County Land Records, Berkeley County Court House, Martinsburg, West Virginia
- Kearfott, J. Baker. "Berkeley County, West Virginia." [map] Martinsburg, 1894.
- Kearfott, Jonathan P. "Map of Berkeley County, Virginia." [Martinsburg], 1847.
- "Marlowe School Reunion." [commemorative pamphlet] Collection of the Berkeley County Historical Society, Martinsburg, West Virginia.
- West Virginia Historic Property Inventory Forms, 1973-2001. Collection of the Berkeley County Historical Society, Martinsburg, West Virginia.
- Wood, Don C. **Documented History of Martinsburg and Berkeley County**. Martinsburg: Berkeley County Historical Society, 2004.

**United States Department of the Interior  
National Park Service**

**National Register of Historic Places  
Continuation Sheet**

**Marlowe Consolidated School  
Berkeley County, WV**

Section Number 10 Page 7

---

**10. Geographical Data**

**VERBAL BOUNDARY DESCRIPTION**

Being Parcel No. 108 as depicted on Falling Water District Tax Assessment Map Number 7, Berkeley County Assessment Office, Berkeley County Court House, Martinsburg, West Virginia

**JUSTIFICATION**

The boundaries of this nomination consist only of the property containing Marlowe Consolidated School.

**United States Department of the Interior  
National Park Service**

**National Register of Historic Places  
Continuation Sheet**

**Marlowe Consolidated School  
Berkeley County, WV**

Section Number   Photo Log   Page   8

---

**PHOTOGRAPH LOG**

All Photographs:

**Marlowe Consolidated School**

Berkeley County, West Virginia

Photographer: David L. Taylor

Date: 2005

Negatives filed at:   West Virginia SHPO  
                                  Charleston, West Virginia

1.    Facade, looking SE, showing overall form and finishes, fenestration, etc.
  
1.    SW perspective, looking NE, showing facade and W elevation; also visible are the low-scale additions to the rear of the building
  
2.    NE elevation, showing windows opening into coat rooms, in-filled windows and fire escape.
  
3.    SW perspective, looking NE and showing rear elevation, fenestration including smaller windows opening onto stairwell, and small connector accessing rear classroom addition, a portion of which appears on the right
  
4.    NE elevation, looking SW and showing windows opening into coat rooms and one window converted to door; also visible is one of the modular portable classrooms beside the building, not included within the nominated tract.
  
5.    View of rear additions, looking NE, showing the 1922 school and its relationship to the additions.
  
6.    View of additions and school, looking NW
  
7.    View SW, showing the modular portable classrooms beside the building, not included within the nominated tract.
  
8.    Interior, detail of first-floor hallway, looking NW toward main entrance, showing finishes, wood

**United States Department of the Interior  
National Park Service**

**National Register of Historic Places  
Continuation Sheet**

**Marlowe Consolidated School  
Berkeley County, WV**

Section Number   Photo Log   Page   9

---

floor, and wainscoting.

9. Interior, detail, looking SE toward stairs, showing original wood floors, stairs, wainscoting, etc.
10. Interior, detail, showing original stairs, newel, balustrade, wainscoting, etc.
11. Typical classroom view, including wainscoting and doors to coatroom
12. Interior detail, looking NE showing typical coatroom
13. Interior, detail, upstairs hall, looking NW and showing fire wall erected at top of stairs
14. Interior, detail, looking SE toward original Principal's office.

United States Department of the Interior  
National Park Service

National Register of Historic Places  
Continuation Sheet

Marlowe Consolidated School  
Berkeley County, WV

Section Number Illustrations Page 10

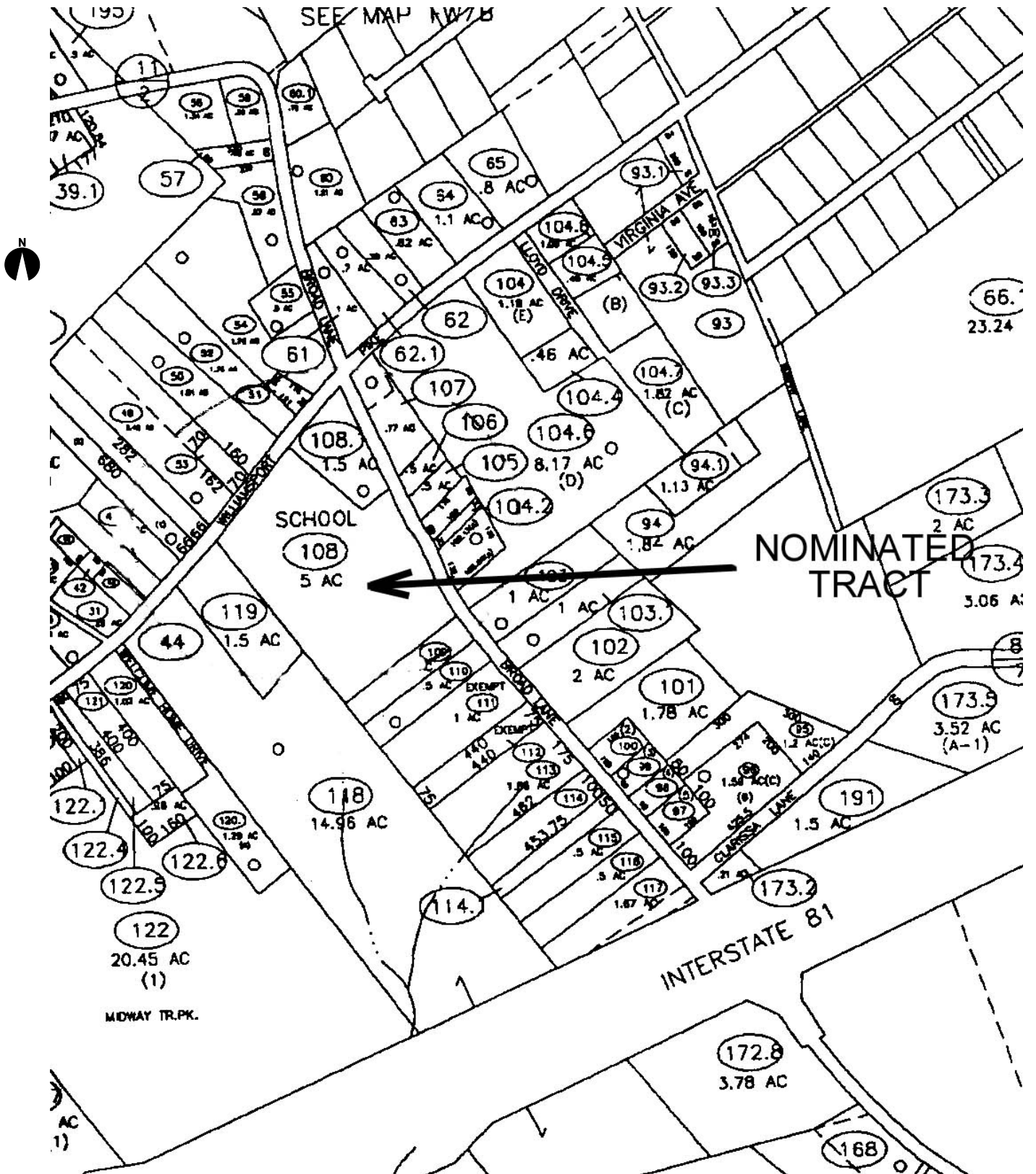


**Fig. 1** The 1911 USGS 15-minute topographical quadrangle map for Williamsport, Maryland, shows the area in the vicinity of Marlowe and the various one-room schools which were consolidated with the construction of the Marlowe Consolidated School.

MARLOWE CONSOLIDATED SCHOOL

Berkeley County, West Virginia

Tax Assessment Map





MARLOWE CONSOLIDATED SCHOOL, Berkeley Co., WV

①





MARLOWE CONSOLIDATED SCHOOL, Berkeley Co., WV

(2)



MARLOWE CONSOLIDATED SCHOOL, Berkeley Co., WV

③



MARLOWE CONSOLIDATED SCHOOL, Berkeley Co., WV

④



MARLOWE CONSOLIDATED SCHOOL, Berkeley Co., WV

5





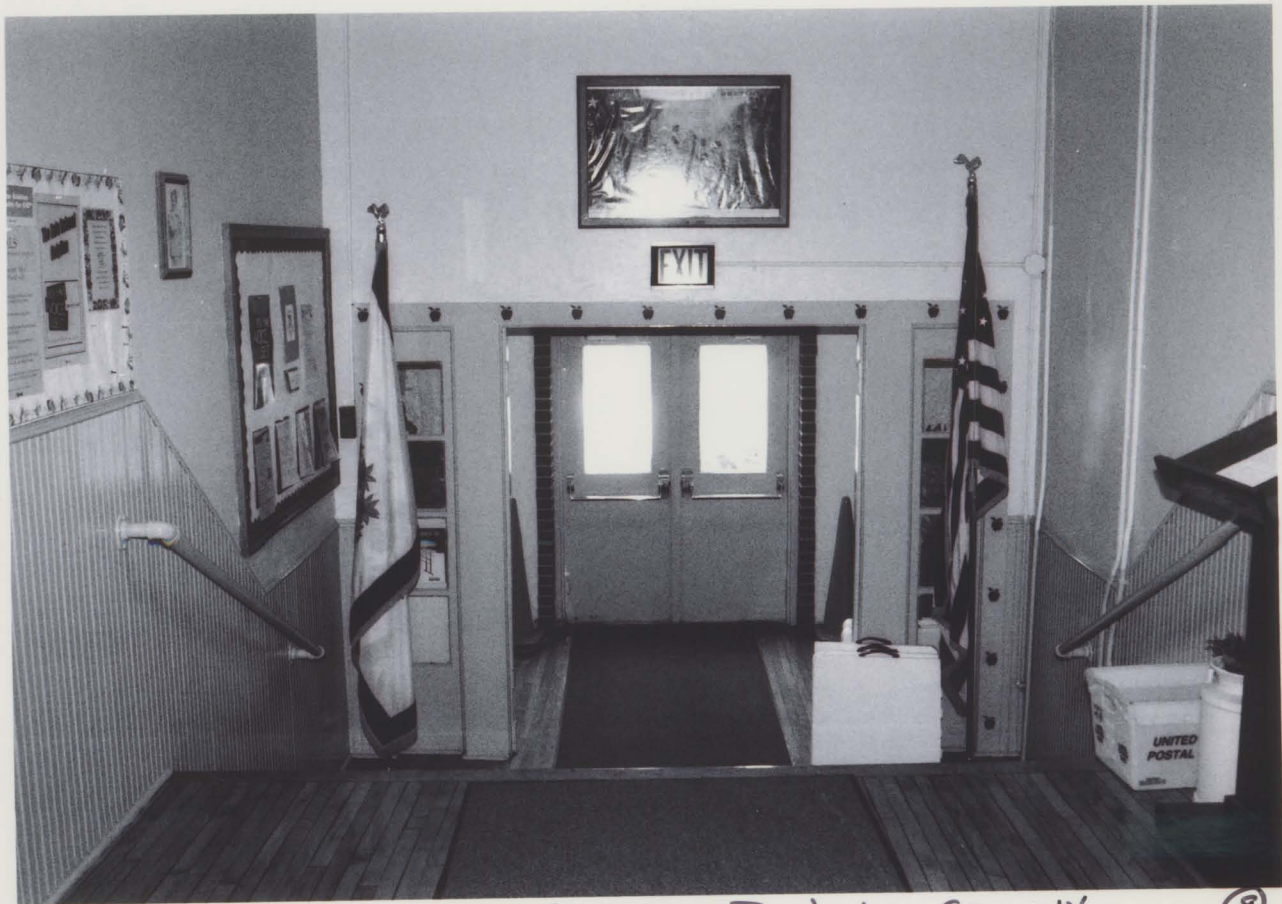
MARLOWE CONSOLIDATED SCHOOL, Berkeley Co., WV

6



MARIOWE CONSOLIDATED SCHOOL, Berkeley Co., WV

(7)



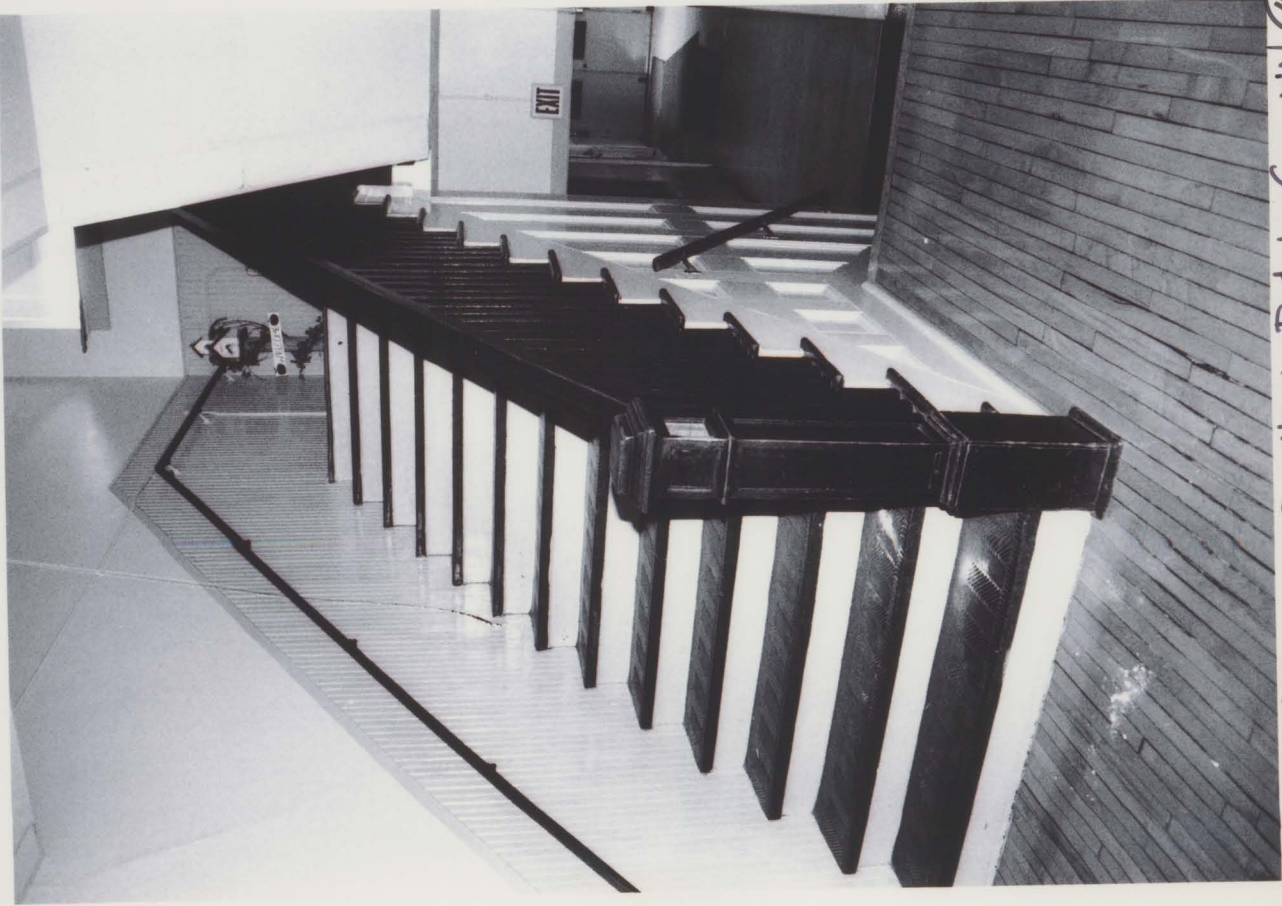
MARLOWE CONSOLIDATED SCHOOLS, Berkeley Co., WV



MARLOWE CONSOLIDATED SCHOOL, Berkeley Co., WV

⑨





MARKOWE CONSOLIDATED SCHOOL, BERKELEY CO., WV (10)



MARLOWE CONSOLIDATED SCHOOL, Berkeley Co., WV

(11)



MARLOWE CONSOLIDATED SCHOOL, BOTKESKY CO., WV (12)



MARLOWE CONSOLIDATED SCHOOL, Berkeley Co., WV





MARLOWE CONSOLIDATED SCHOOL, Berkeley Co., WV